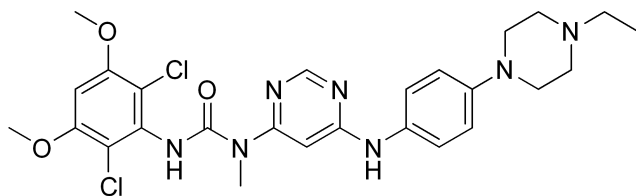


Infigratinib HNMR Analysis, Solvent = DMSO



—12.076

9.443
8.388
7.421
7.400
6.932
6.909
6.901
6.407
3.942
3.351
3.306
3.100
3.090
3.078
2.506
2.483
2.390
2.373
2.355
2.337
1.051
1.033
1.015

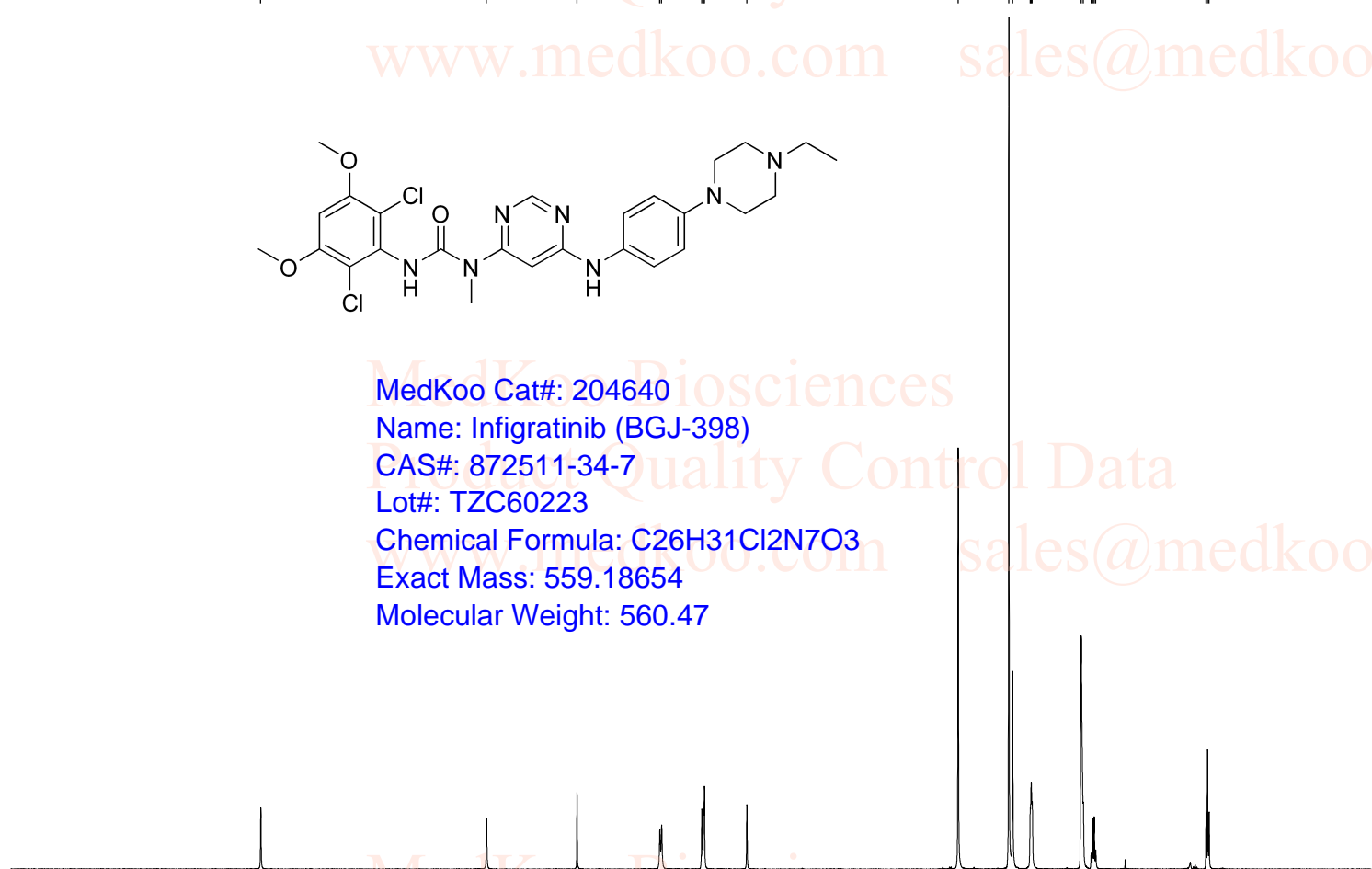


MedKoo Cat#: 204640
Name: Infigratinib (BGJ-398)
CAS#: 872511-34-7
Lot#: TZC60223
Chemical Formula: C₂₆H₃₁Cl₂N₇O₃
Exact Mass: 559.18654
Molecular Weight: 560.47

Current Data Parameters
NAME BGJ398
EXPNO 10
PROCNO 1
F2 - Acquisition Parameters
INSTRUM spect
PROBHD 5 mm PABBO BB-
PULPROG zg30
TD 65536
SOLVENT DMSO
NS 16
DS 2
SWH 8012.820 Hz
FIDRES 0.122266 Hz
AQ 4.0894465 sec
RG 128
DW 62.400 usec
DE 6.50 usec
TE 296.1 K
D1 1.00000000 sec
TD0 1

==== CHANNEL f1 =====
SFO1 400.1324710 MHz
NUC1 1H
P1 13.00 usec
PLW1 36.00000000 W

F2 - Processing parameters
SI 65536
SF 400.1300000 MHz
WDW no
SSB 0
LB 0 Hz
GB 0
PC 1.00



1.00

1.00

0.97

1.98

3.04

0.99

6.04

3.12

3.94

2.16

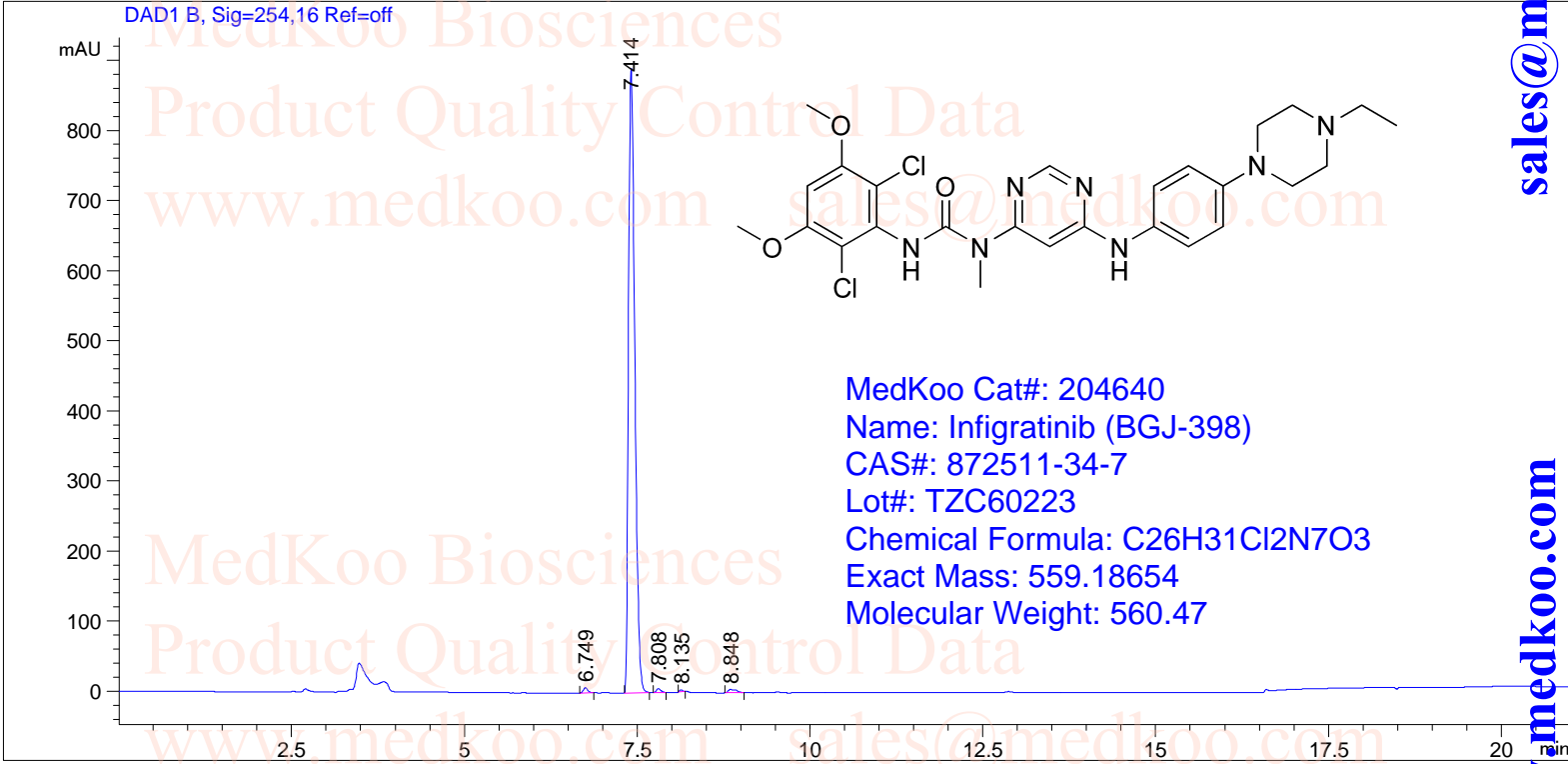
3.06

14 13 12 11 10 9 8 7 6 5 4 3 2 1 ppm

Infigratinib HPLC Analysis

```

=====
Acq. Operator   : ZJ                               Seq. Line :    2
Acq. Instrument : Instrument 1                     Location  : Vial 52
Sample Name    : BGJ398
Inj            : 1
Inj Volume     : 1.0 µl
Different Inj Volume from Sequence !      Actual Inj Volume : 4.0 µl
Analysis Method : C:\CHEM32\1\METHODS\TEST-KR.M
    
```



Area Percent Report

```

=====
Sorted By           :      Signal
Multiplier:         :      1.0000
Dilution:           :      1.0000
Use Multiplier & Dilution Factor with ISTDs
    
```

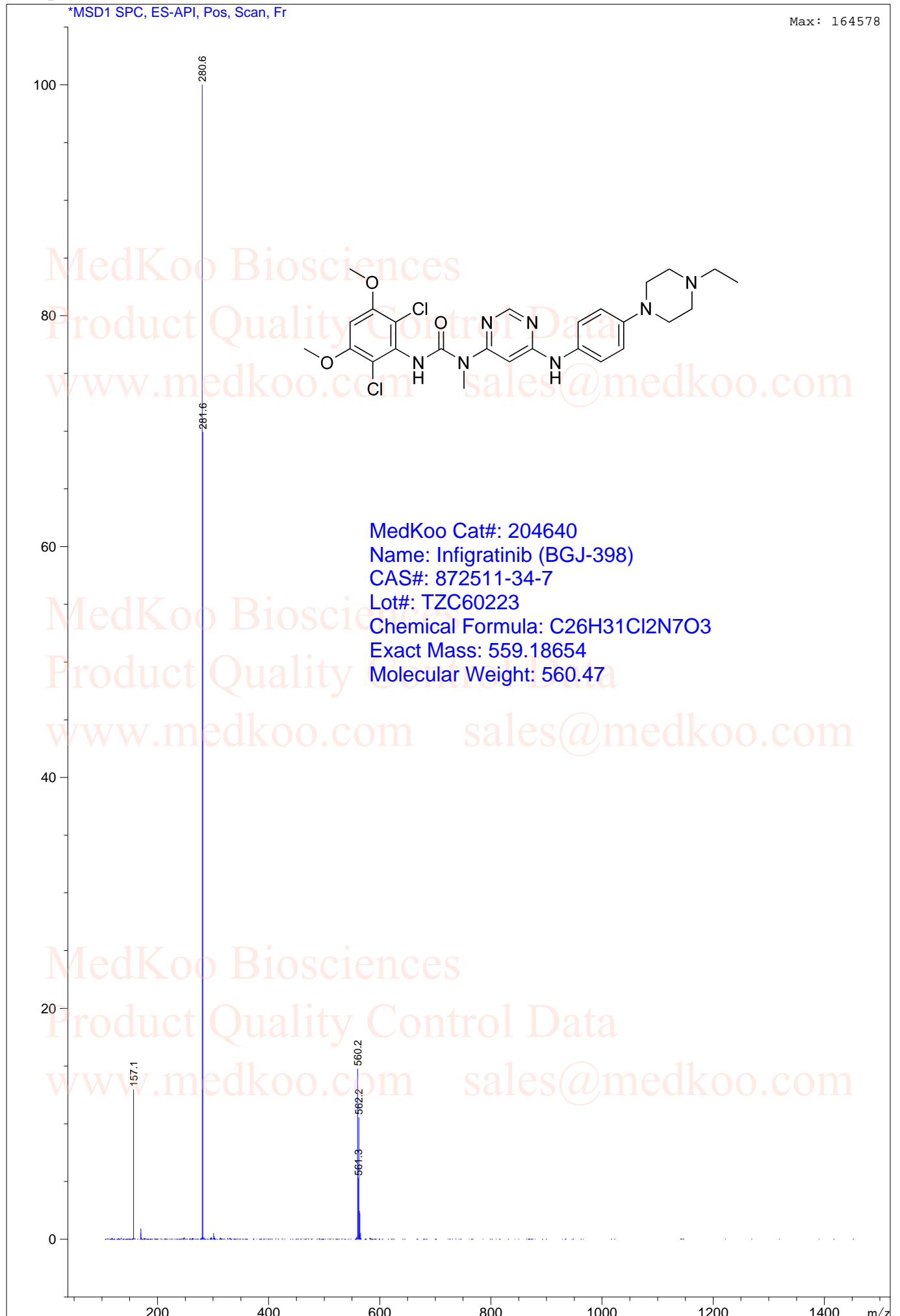
Signal 1: DAD1 B, Sig=254,16 Ref=off

Peak #	RetTime [min]	Type	Width [min]	Area [mAU*s]	Height [mAU]	Area %
1	6.749	BB	0.0702	33.65577	7.52312	0.5843
2	7.414	BB	0.0979	5650.94971	891.71680	98.1024
3	7.808	BBA	0.0676	25.71019	5.81195	0.4463
4	8.135	BBA	0.0521	8.42843	2.72709	0.1463
5	8.848	BB	0.1060	41.51157	5.26442	0.7207

Totals : 5760.25567 913.04337

Infigratinib MS Analysis

MS Spectrum



sales@medkoo.com

www.medkoo.com

MedKoo Biosciences