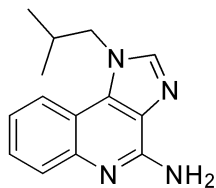


Imiquimod ¹H NMR Analysis in DMSO

www.medkoo.com sales@medkoo.com



MedKoo Code#: 100472

Name: Imiquimod

CAS#: 99011-02-6

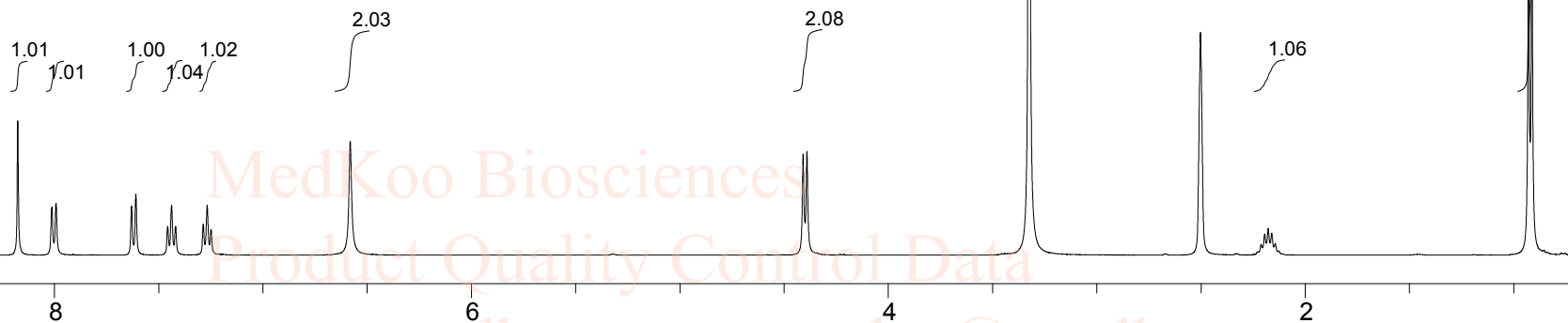
Lot#: A20T06K30

Chemical Formula: C₁₄H₁₆N₄

Exact Mass: 240.13750

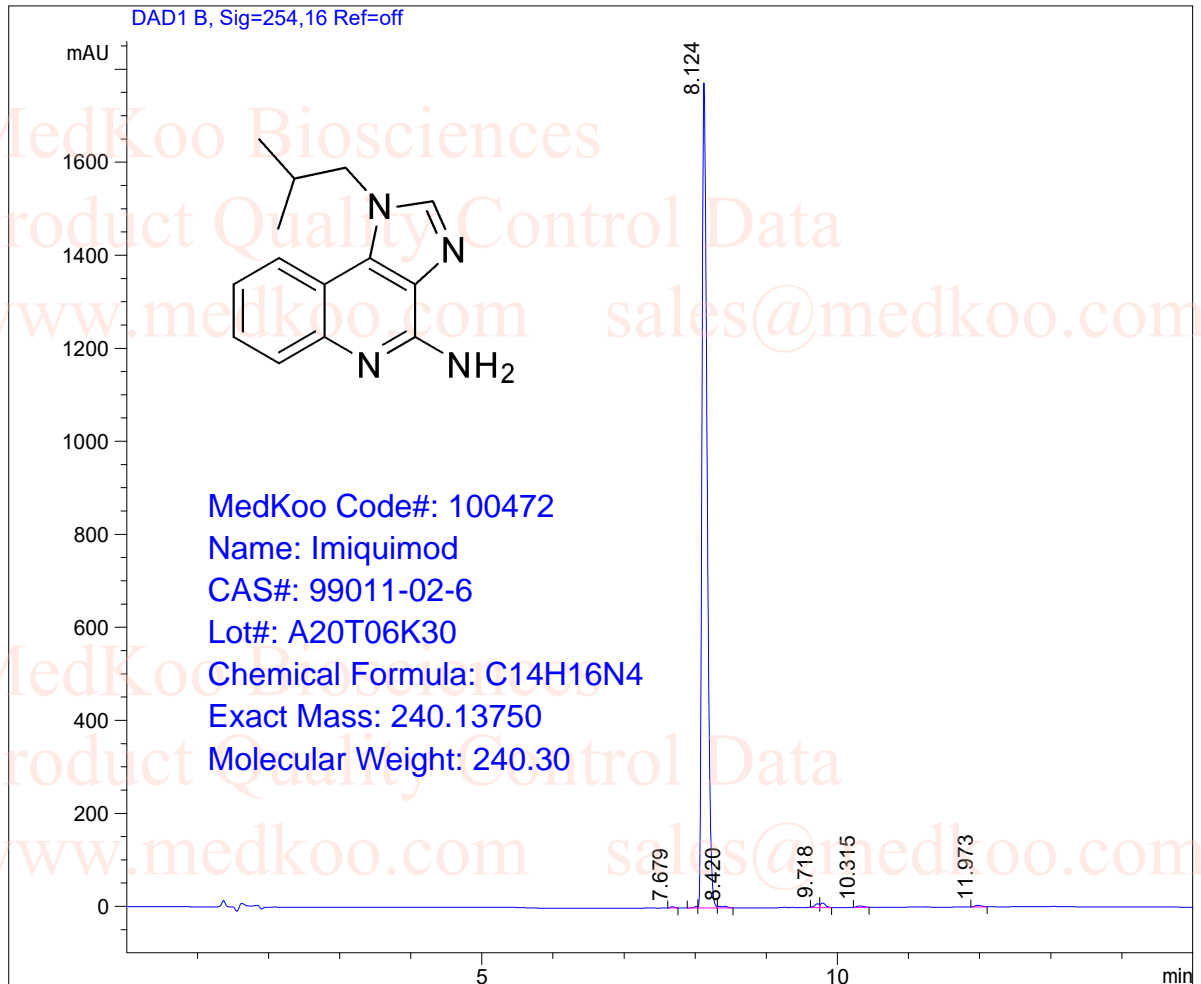
Molecular Weight: 240.30

www.medkoo.com sales@medkoo.com



Imiquimod HPLC Analysis

Sample Name : 99011-02-6 Inj. Vol. : 3ul
 Data File : D:\DATA-LCMS-13\99011-02-6.D Location : Vial 61
 Acq Operator : LCMS-13
 Acq. Method : D:\data-lcms-13\C2-P-05-95-TFA-15MI
 Method Info. : column:Eclipse XDB-C18 5um 4.6*150mm ;mobile phase:B(ACN), A(0.05%TFA); gradient(B%):as Acq.Method above



Integration Results

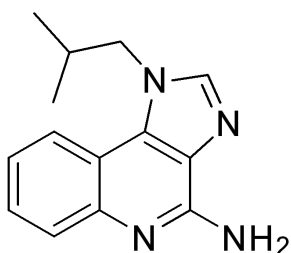
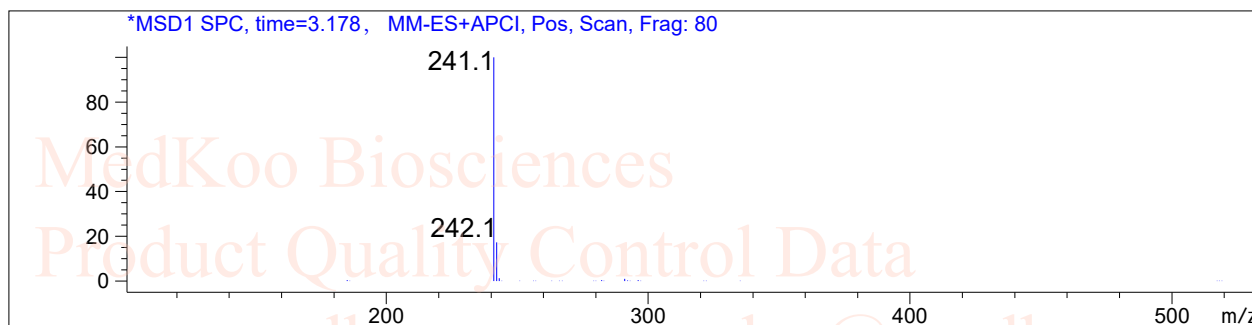
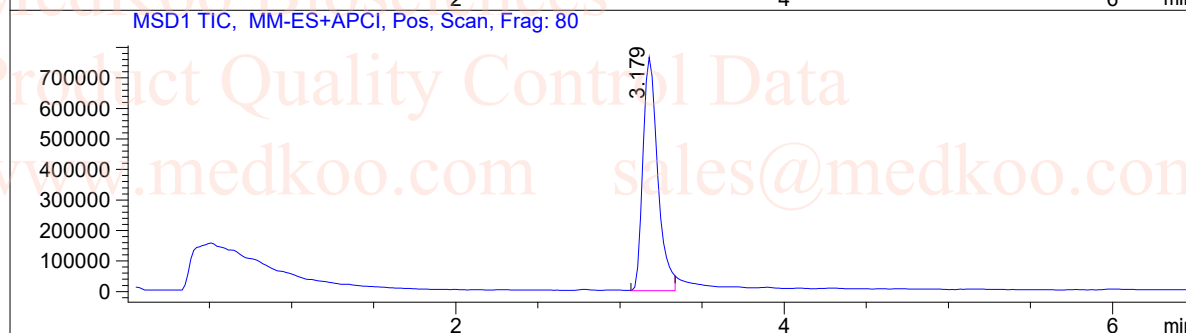
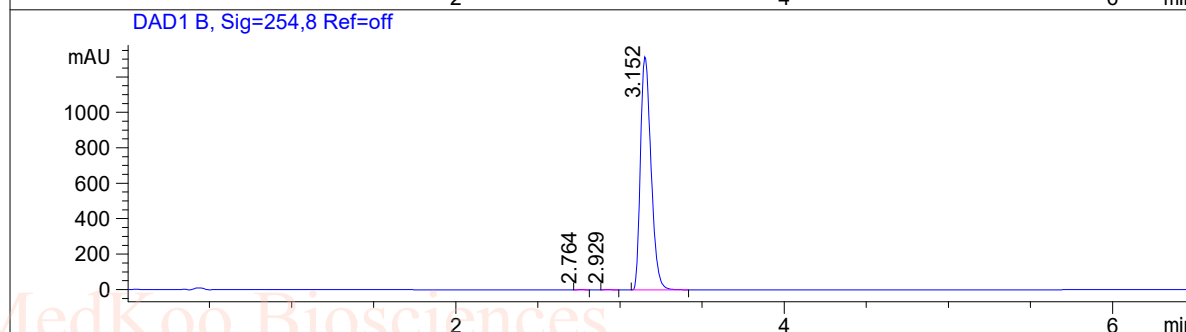
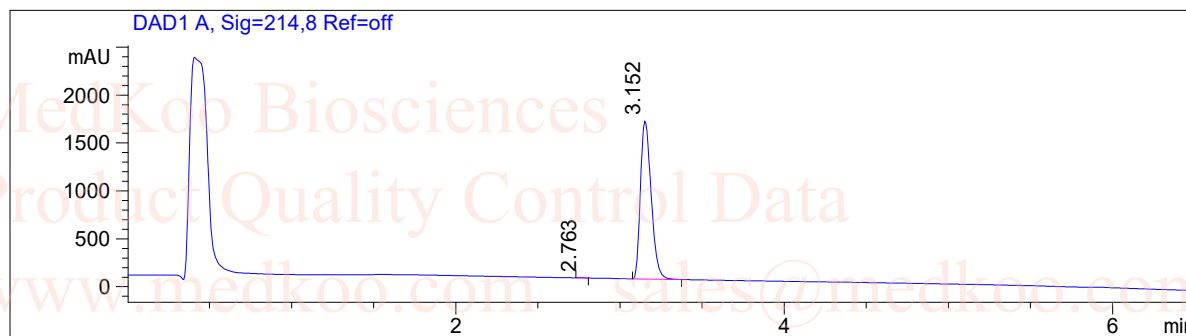
Signal 1: DAD1 B, Sig=254,16 Ref=off

#	R.T.	Type	Height	Height%	Width	Area	Area %
1	7.679	MF	2.955	0.163	0.063	11.086	0.119
2	8.019	MF	3.445	0.190	0.055	11.272	0.121
3	8.124	MF	1777.368	98.088	0.086	9132.919	98.022
4	8.420	FM	3.475	0.192	0.144	30.065	0.323
5	9.718	BV	8.267	0.456	0.066	36.792	0.395
6	9.794	VB	9.771	0.539	0.071	47.579	0.511
7	10.315	FM	3.225	0.178	0.122	23.649	0.254
8	11.973	FM	3.504	0.193	0.113	23.858	0.256

Imiquimod LC/MS Analysis

Sample Name : 99011-02-6 Inj. Vol. : 3ul
Data File : D:\DATA-LCMS-13\99011-02-6.D Location : Vial 61

Acq Operator : LCMS-13
Acq. Method : D:\data-lcms-13\P-05-60-TFA.M
Method Info. : column:Xbridge C18 5um 4.6*50mm ;mobile phase:B(ACN),
A(0.05%TFA); gradient(B%):as Acq.Method above



MedKoo Code#: 100472

Name: Imiquimod

CAS#: 99011-02-6

Lot#: A20T06K30

Chemical Formula: C₁₄H₁₆N₄

Exact Mass: 240.13750

Molecular Weight: 240.30