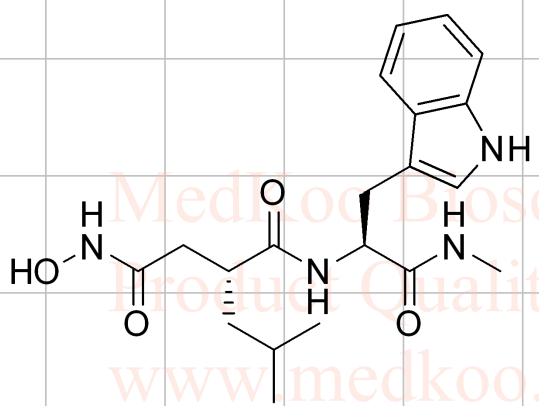


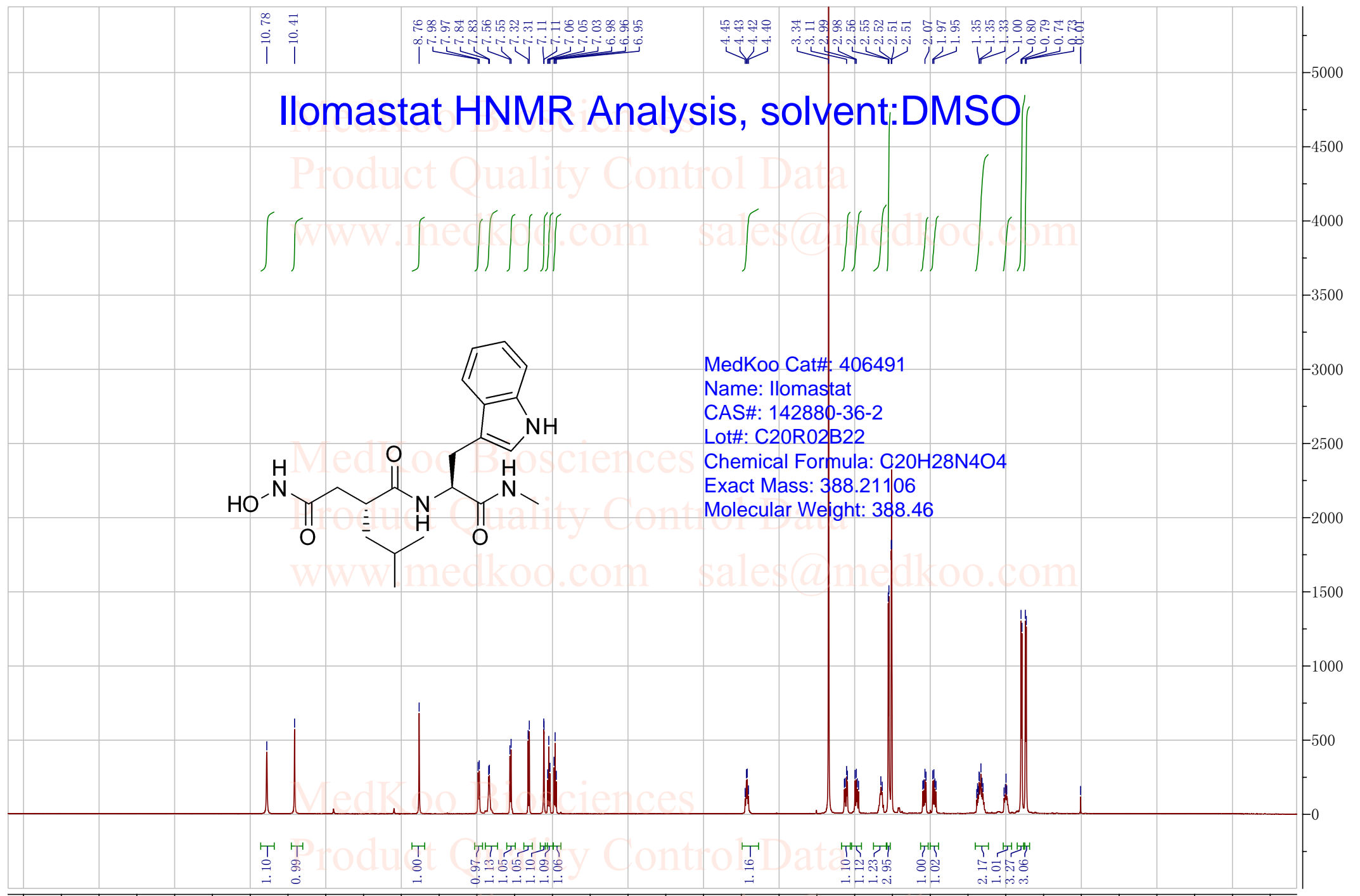
Ilomastat HNMR Analysis, solvent:DMSO

Product Quality Control Data

www.medkoo.com sales@medkoo.com



MedKoo Cat#: 406491
Name: Ilomastat
CAS#: 142880-36-2
Lot#: C20R02B22
Chemical Formula: C₂₀H₂₈N₄O₄
Exact Mass: 388.21106
Molecular Weight: 388.46



10.78
10.41
8.76
7.98
7.97
7.84
7.83
7.56
7.55
7.32
7.31
7.11
7.06
7.05
7.03
6.98
6.95

4.45
4.43
4.42
4.40
3.34
3.11
2.99
2.98
2.56
2.55
2.52
2.51
2.51
2.07
1.97
1.95
1.35
1.35
1.33
1.00
0.80
0.79
0.74
0.67

1.10
0.99
1.00
0.97
1.13
1.05
1.10
1.09
1.06

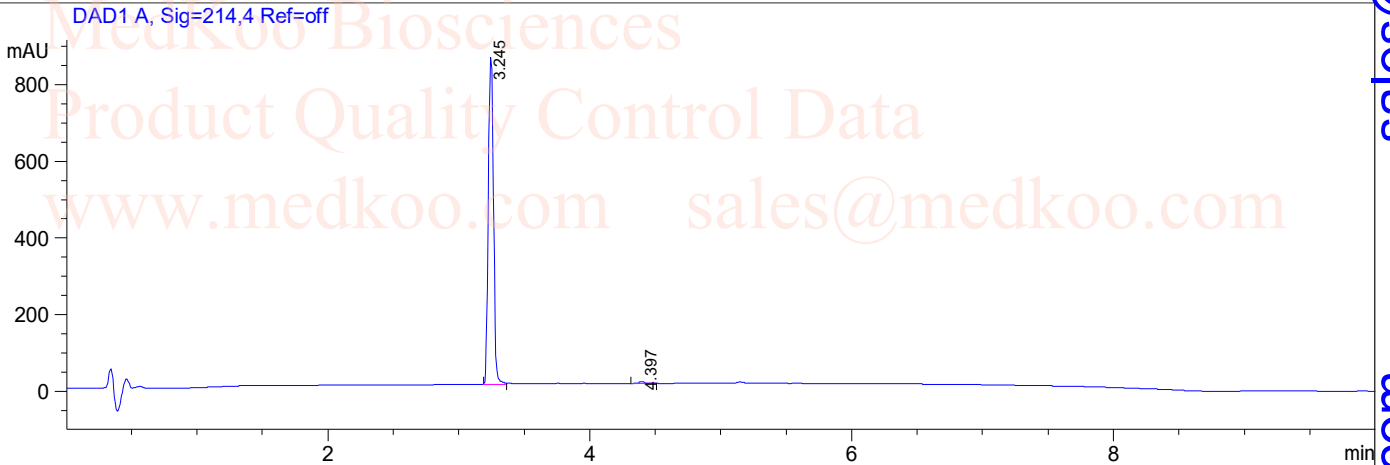
1.16
1.10
1.12
1.23
2.95
1.00
1.02
2.17
1.01
3.27
3.06

14 13 12 11 10 9 8 7 6 5 4 3 2 1 0 -1 -2

Ilomastat HPLC Analysis

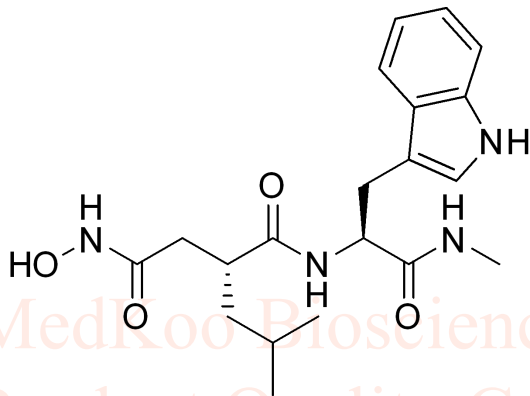
Sample Name : I1
Acq. Operator : 2
Spec. Reported : Integration

Tgt Mass(EZX) :
Location : P2-D-05
Inj : 0
Inj Volume : 6 ul



Integration Results for DAD1 A, Sig=214,4 Ref=off

RetTim	Width	Area	Height	Area%
3.25	0.04	2331.66	854.29	99.31
4.40	0.05	16.35	4.93	0.69



MedKoo Cat#: 406491
Name: Ilomastat
CAS#: 142880-36-2
Lot#: C20R02B22
Chemical Formula: C₂₀H₂₈N₄O₄
Exact Mass: 388.21106
Molecular Weight: 388.46

sales@medkoo.com

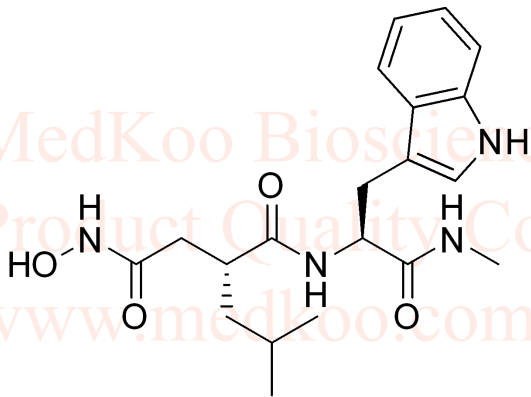
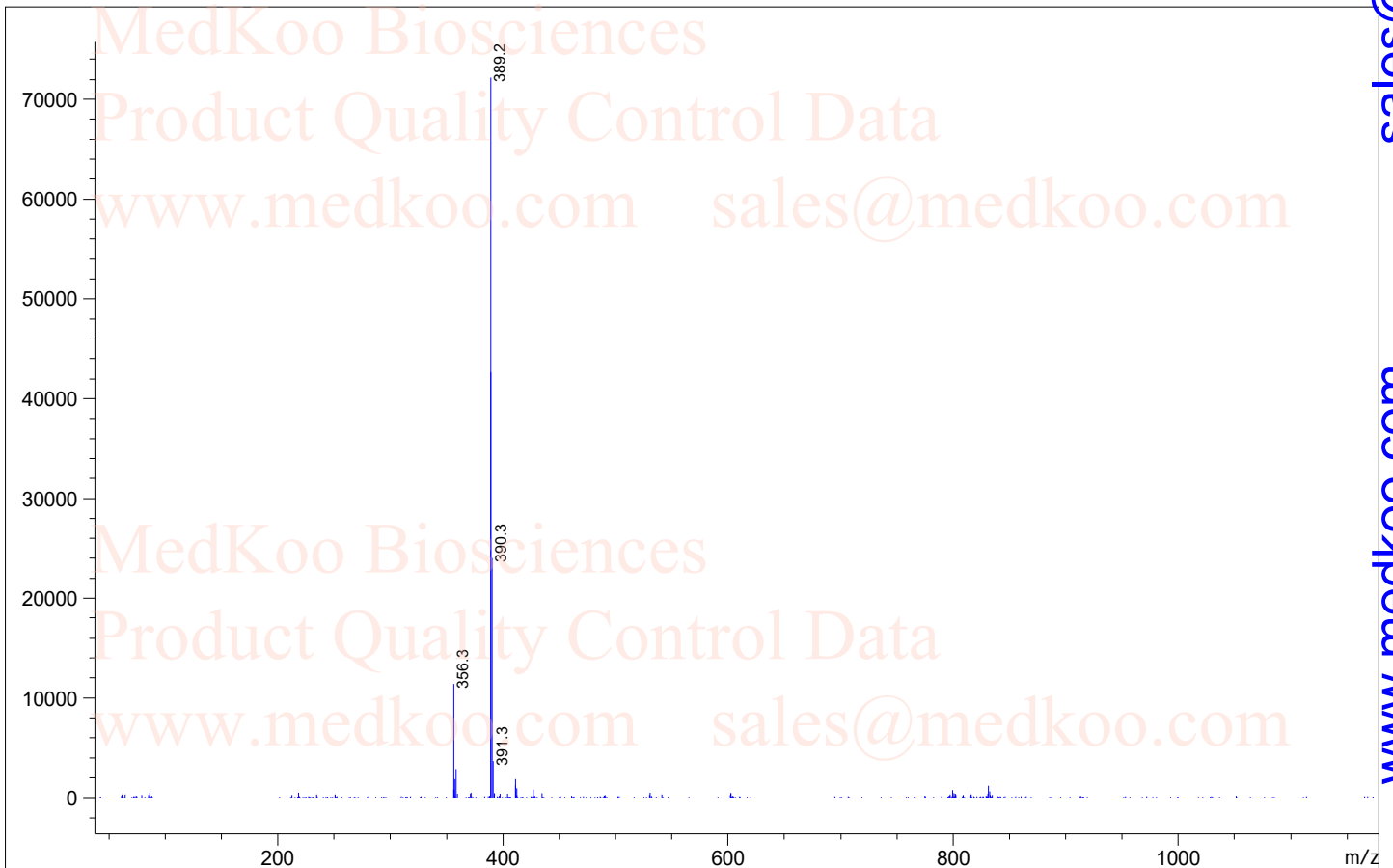
www.medkoo.com

MedKoo Biosciences

Ilomastat MS Analysis

Sample Name : I1
Acq. Operator : 8

Tgt Mass(EZX) :



MedKoo Cat#: 406491

Name: Ilomastat

CAS#: 142880-36-2

Lot#: C20R02B22

Chemical Formula: C₂₀H₂₈N₄O₄

Exact Mass: 388.21106

Molecular Weight: 388.46

sales@medkoo.com

www.medkoo.com

MedKoo Biosciences