

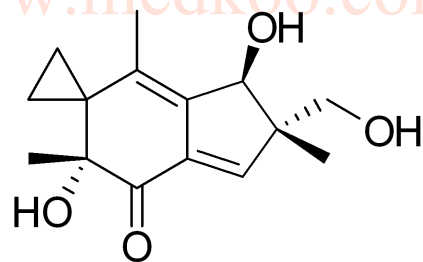
—6.36

4.88  
4.81  
4.80  
4.77  
4.75  
4.74  
4.71  
4.43  
4.42  
3.24  
3.23  
3.22  
3.21  
3.18  
3.17  
3.16  
3.15  
1.58  
1.22  
1.01  
1.00  
1.00  
0.99  
0.98  
0.98  
0.97  
0.89  
0.89  
0.88  
0.88  
0.87  
0.86  
0.86  
0.84  
0.83  
0.83  
0.82  
0.81  
0.81  
0.80  
0.80  
0.66  
0.66  
0.65  
0.64  
0.64  
0.64  
0.63  
0.62  
0.37  
0.36  
0.36  
0.35  
0.34  
0.34

# Illudin S HNMR Analysis, Solvent: DMSO

## Product Quality Control Data

www.medkoo.com sales@medkoo.com

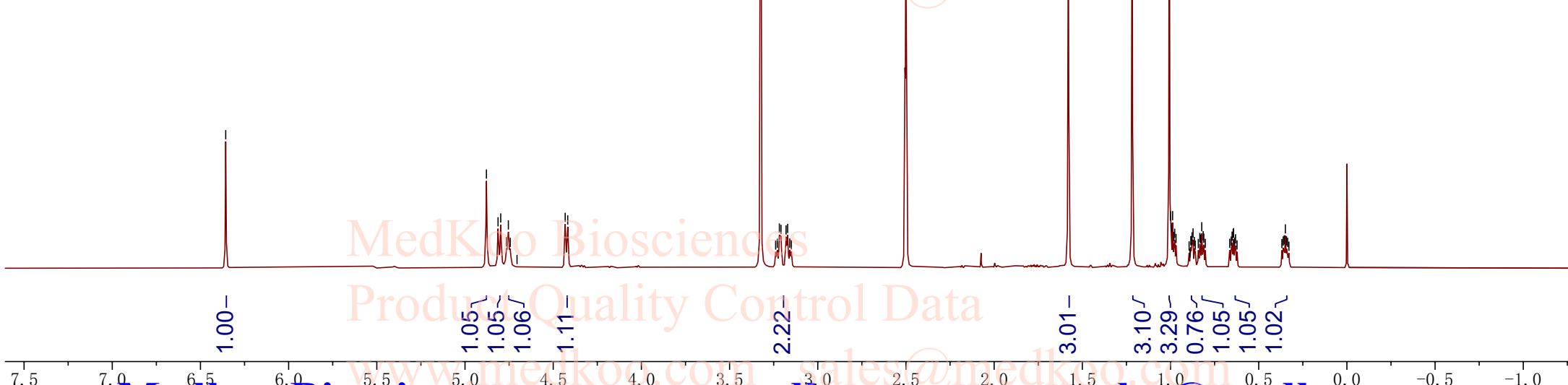


Medkoo Cat#: 598259  
 Name: Illudin S  
 CAS#: 1149-99-1  
 Lot#: A22T11K03  
 Chemical Formular: C<sub>15</sub>H<sub>20</sub>O<sub>4</sub>  
 Exact Mass: 264.1362  
 Molecular Weight: 264.32

## MedKoo Biosciences

## Product Quality Control Data

www.medkoo.com sales@medkoo.com



Medkoo Biosciences

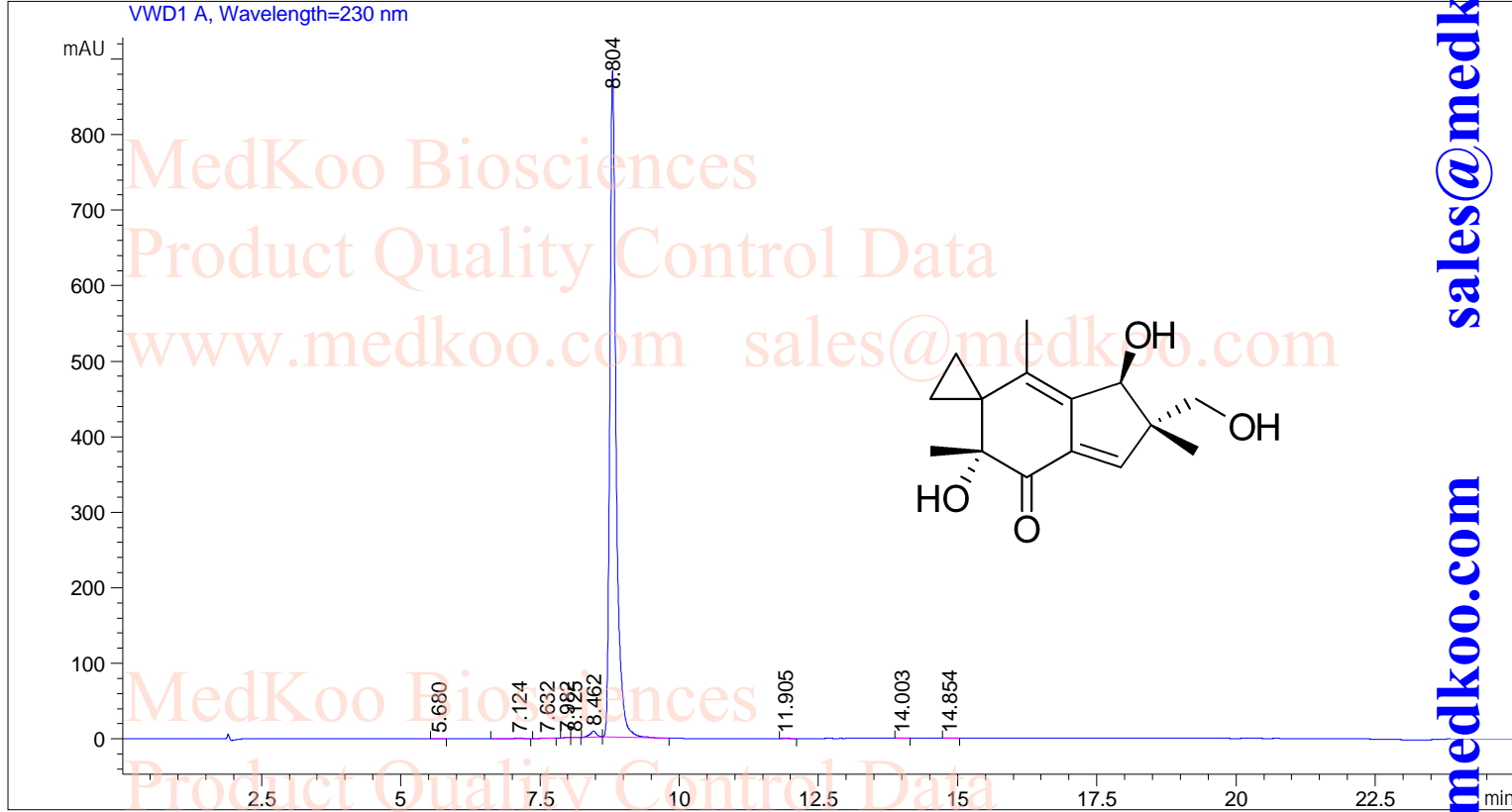
www.medkoo.com

sales@medkoo.com

# Illudin S HPLC Analysis

```

=====
Acq. Operator   : SYSTEM                      Seq. Line :    2
Acq. Instrument : HPLC-1SY                   Location  :   52
Sample Name    : HDB136-221001                Inj       :    1
                                                Inj Volume: 5.000 µl
Method         : E:\HD008\DATA\HDB136\HDB136-1.M(Squence Method)
=====
    
```



## Area Percent Report

```

=====
Sorted By      : Signal
Multiplier    : 1.0000
Dilution      : 1.0000
Use Multiplier & Dilution Factor with ISTDs
Signal 1: VWD1 A, Wavelength=230 nm
    
```

Peak #	RetTime [min]	Type	Width [min]	Area [mAU*s]	Height [mAU]	Area %
1	5.680	BB	0.1076	1.22701	1.71291e-1	0.0176
2	7.124	BB	0.1319	4.15013	4.40457e-1	0.0595
3	7.632	BB	0.1237	2.23894	2.59328e-1	0.0321
4	7.982	BB	0.0861	3.41606	6.41830e-1	0.0490
5	8.125	BB	0.0886	2.05154	3.76258e-1	0.0294
6	8.462	BB	0.1212	66.91423	8.11152	0.9596
7	8.804	BB	0.1171	6890.05225	882.24829	98.8127
8	11.905	BB	0.1010	1.27624	1.88373e-1	0.0183
9	14.003	BB	0.1083	8.09738e-1	1.17683e-1	0.0116
10	14.854	BB	0.1044	7.05212e-1	1.02277e-1	0.0101
Totals				6972.84134	892.65731	

```

=====
Medkoo Cat#: 598259
Name: Illudin S
CAS#: 1149-99-1
Lot#: A22T11K03
Chemical Formular: C15H20O4
Exact Mass: 264.1362
Molecular Weight: 264.32
    
```

sales@medkoo.com

www.medkoo.com

Medkoo Biosciences

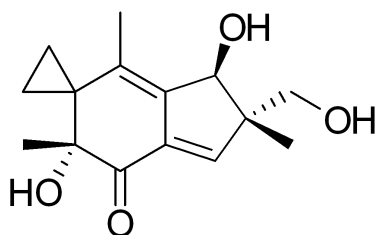
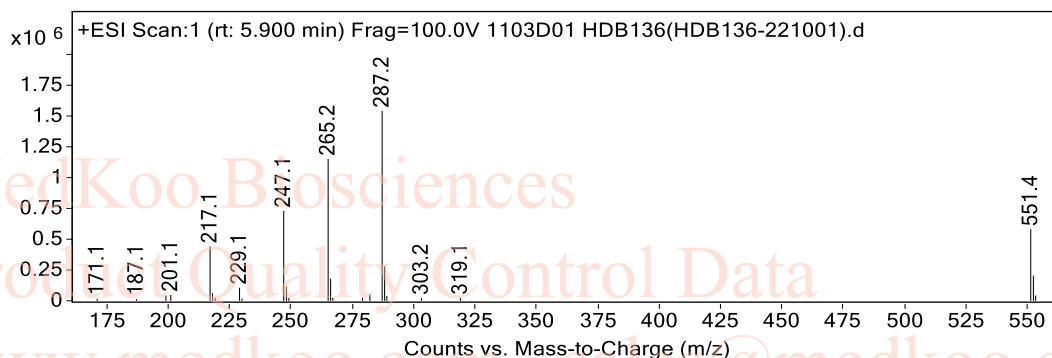
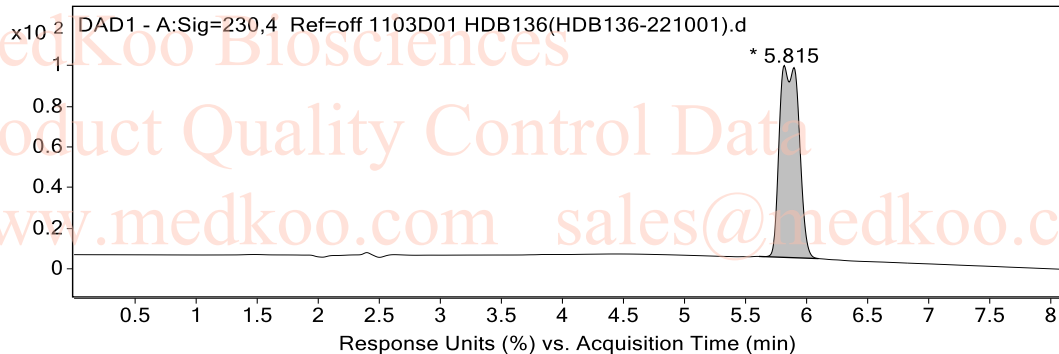
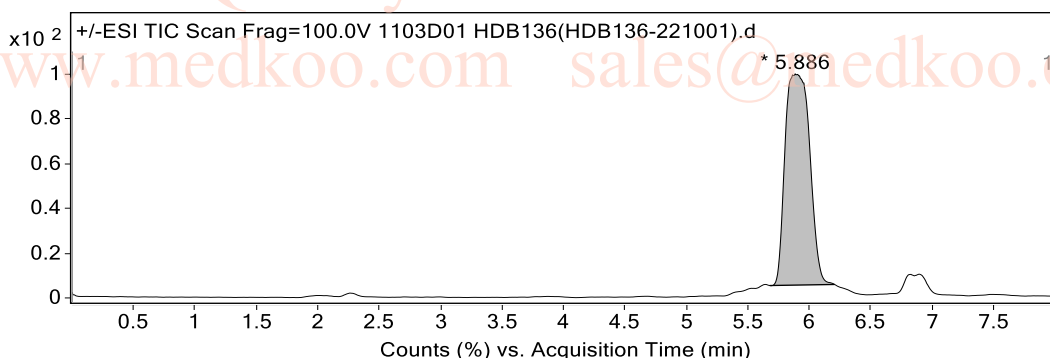
# Illudin S LC/MS Analysis

**Data Filename** HDB136(HDB136-221001).d  
**Sample Type** Sample  
**Instrument Name** SY189  
**Acq Method** LCMS.m.ssizep  
**IRM Calibration Status** Not Applicable  
**Comment**  
**Method part to run:** Acquisition Only  
**Info.**

**Sample Name** HDB136  
**Position** P1C1  
**User Name** System  
**DA Method** Default.m  
**Stream Name** LC 1  
**Acquisition SW Version** 6400 Series Triple  
Quadrupole 10.1 (67)

## Chromatograms

Fragmentor Voltage 100 Collision Energy 0 Ionization Mode ESI



Medkoo Cat#: 598259  
Name: Illudin S  
CAS#: 1149-99-1  
Lot#: A22T11K03  
Chemical Formular: C15H20O4  
Exact Mass: 264.1362  
Molecular Weight: 264.32