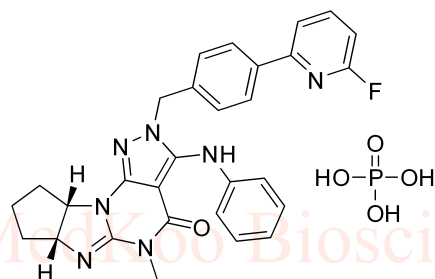


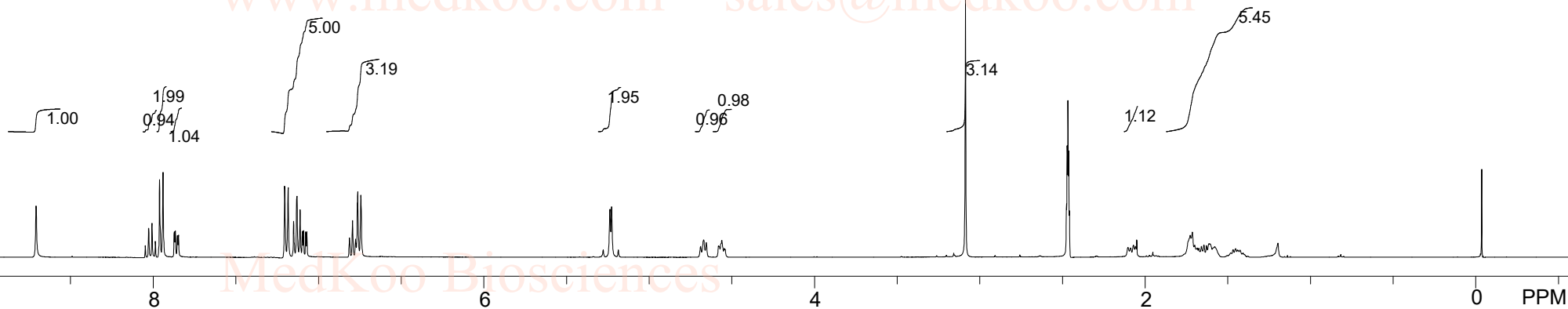
# ITI-214 phosphate HNMR Analysis, Solvent:DMSO

www.medkoo.com sales@medkoo.com



MedKoo Cat#: 522622  
 Name: ITI-214 phosphate  
 CAS#: 1642303-38-5 (phosphate)  
 Lot#: S9S05C01  
 Chemical Formula: C<sub>29</sub>H<sub>29</sub>FN<sub>7</sub>O<sub>5</sub>P  
 Molecular Weight: 605.5672

www.medkoo.com sales@medkoo.com



www.medkoo.com sales@medkoo.com

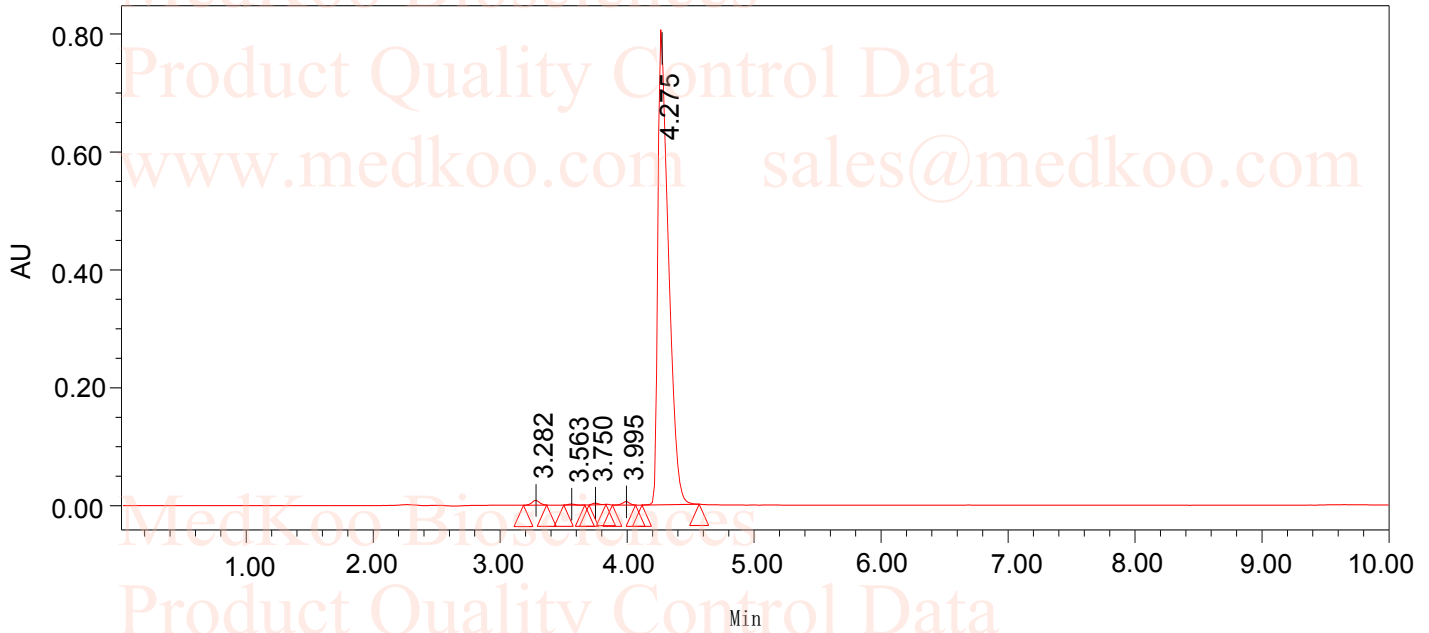
ITI-214 phosphate,d6-MDSO,400MHz

F1: 399.820	F2: 100.544	SW1: 6410	OF1: 2398.9	PTS1d: 16384
EX: s2pul	PW: 8.3 usec	PD: 5.0 sec	NA: 16	LB: 0.0

# ITI-214 phosphate HPLC Analysis

Sample Name: ITI-214 phosphate  
 Sample Type: Unknown  
 Vial: 1:B,2  
 Injection: 1  
 Inj. Volume: 3.00 ul  
 Run Time: 10.0 Minutes

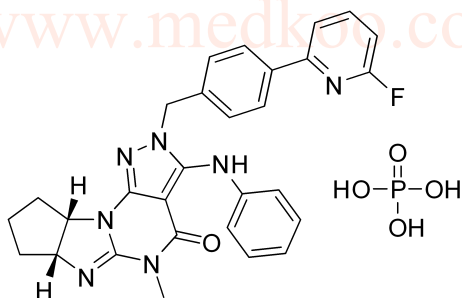
User:  
 Acq. Method: 40-60  
 Method: ITI-214 phosphate  
 Channel: W2996 254.0nm-1.2  
 Channel: W2996 PDA 254.0 nm (1.2)



SampleName ITI-214 phosphate; Vial 1:B,2; Injection 1; Channel W2996 254.0nm-1.2

**Channel W2996 PDA 254.0 nm (1.2)**

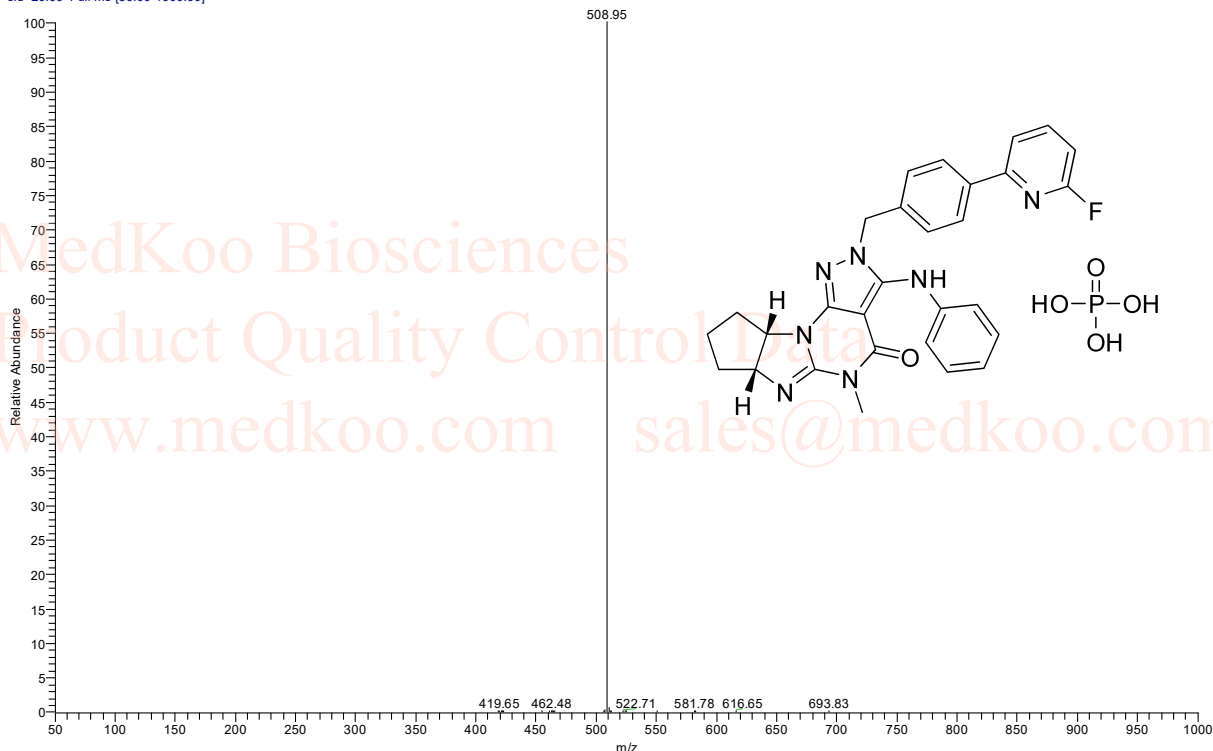
	Channel	Ret. Time (Min)	Area	% Area	Height
1	W2996 PDA254.0 nm (1.2)	3.282	33346	0.70	8014
2	W2996 PDA254.0 nm (1.2)	3.563	5880	0.12	1648
3	W2996 PDA254.0 nm (1.2)	3.750	8625	0.18	2679
4	W2996 PDA254.0 nm (1.2)	3.995	22138	0.47	5582
5	W2996 PDA254.0 nm (1.2)	4.275	4684929	98.53	812467



MedKoo Cat#: 522622  
 Name: ITI-214 phosphate  
 CAS#: 1642303-38-5 (phosphate)  
 Lot#: S9S05C01  
 Chemical Formula: C<sub>29</sub>H<sub>29</sub>FN<sub>7</sub>O<sub>5</sub>P  
 Molecular Weight: 605.5672

# ITI-214 phosphate MS Analysis

#199 RT: 1.28 AV: 1 NL: 3.21E6 T: ITMS + c ESI  
sid=20.00 Full ms [50.00-1000.00]



#397 RT: 2.58 AV: 1 NL: 7.63E5 T: ITMS + c ESI Full  
ms [50.00-1000.00]

