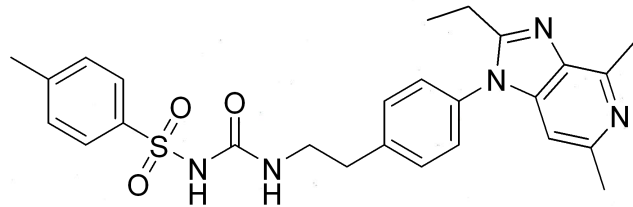
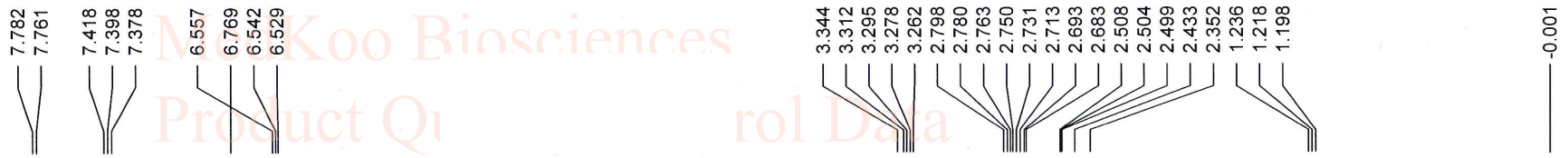
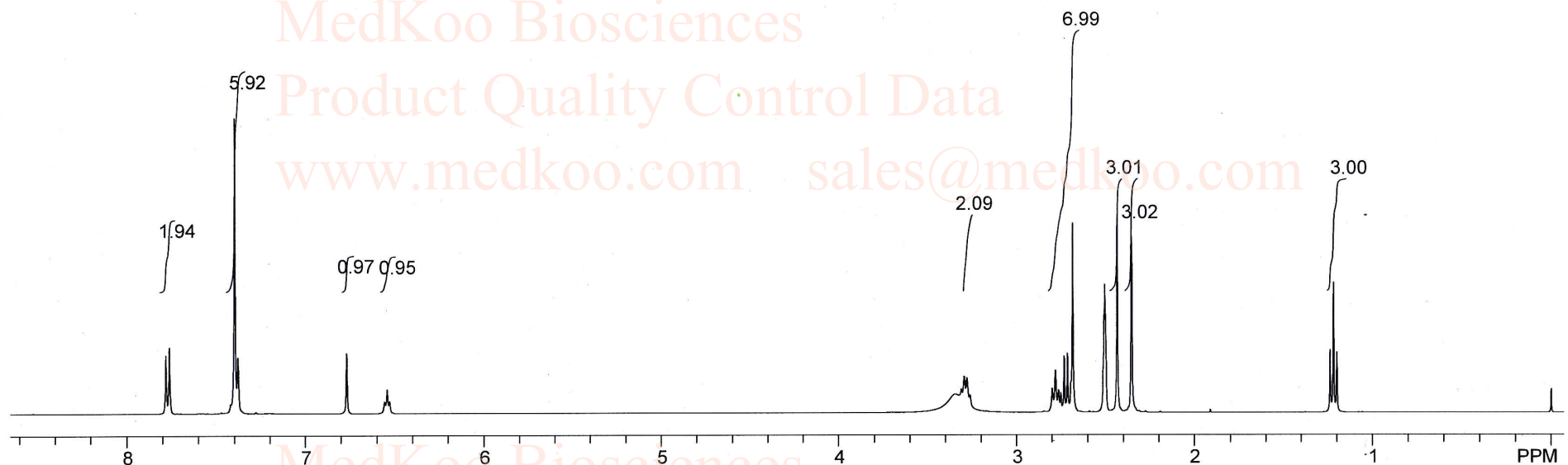


Grapiprant HNMR analysis, solvent=DMSO-d6



MedKoo Cat#: 522545
Name: Grapiprant
CAS#: 415903-37-6
Lot#: A9T01K24
Chemical Formula: C₂₆H₂₉N₅O₃S
Exact Mass: 491.1991
Molecular Weight: 491.61



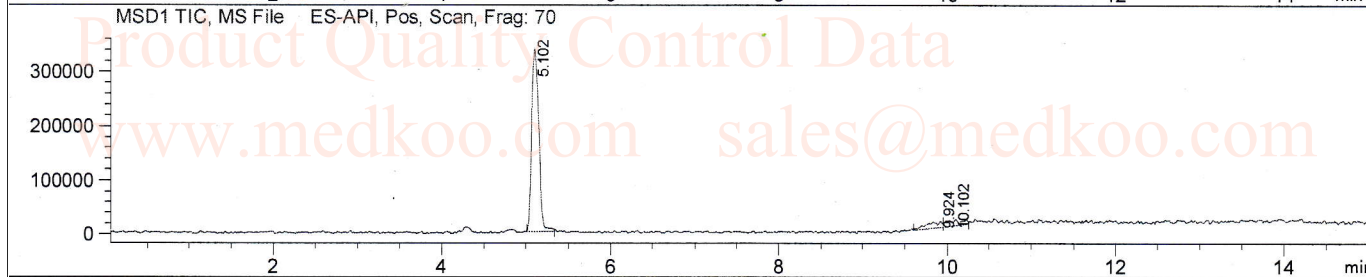
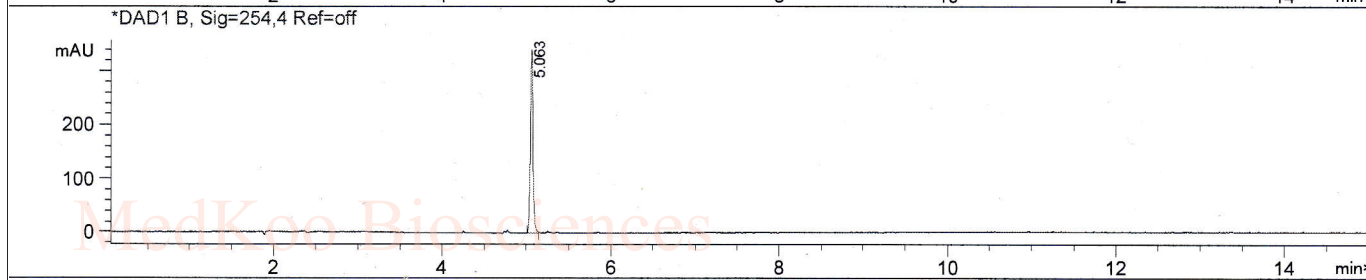
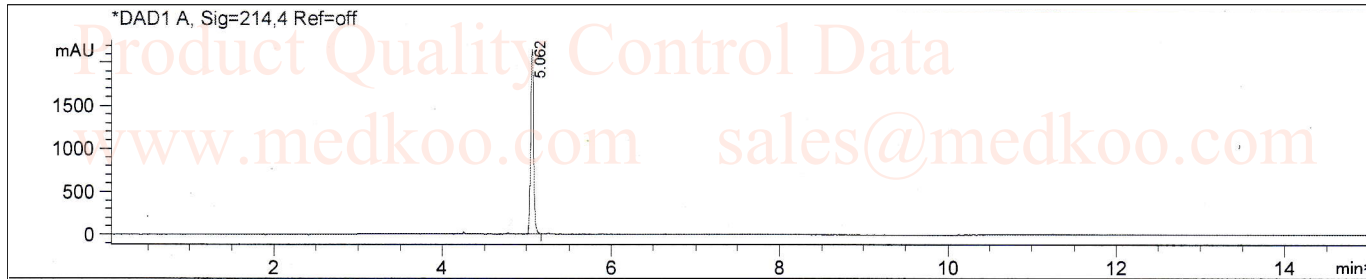
Grapiprant HPLC analysis

sales@medkoo.com

www.medkoo.com

MedKoo Biosciences

Method Info	: Mobile Phase: A: water (0.01% TEA) B: CAN (0.01% TFA)		
GGradient			
Time	0	7.5	15
B%	5	95	95
Flow rate	: 1 ml/min		
Column	: SUNFIRE, 150 * 4.6mm, 3.5 um		
Column Temp.	: 45C, MS POS150-1500		

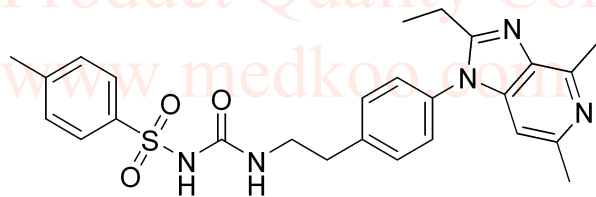


Integration Results for DAD1 A, Sig=214,4 Ref=off

RetTim	Width	Area	Height	Area%
5.06	0.04	4965.83	2143.28	100.00

Integration Results for DAD1 B, Sig=254,4 Ref=off

RetTim	Width	Area	Height	Area%
5.06	0.03	695.61	342.65	100.00



MedKoo Cat#: 522545

Name: Grapiprant

CAS#: 415903-37-6

Lot#: A9T01K24

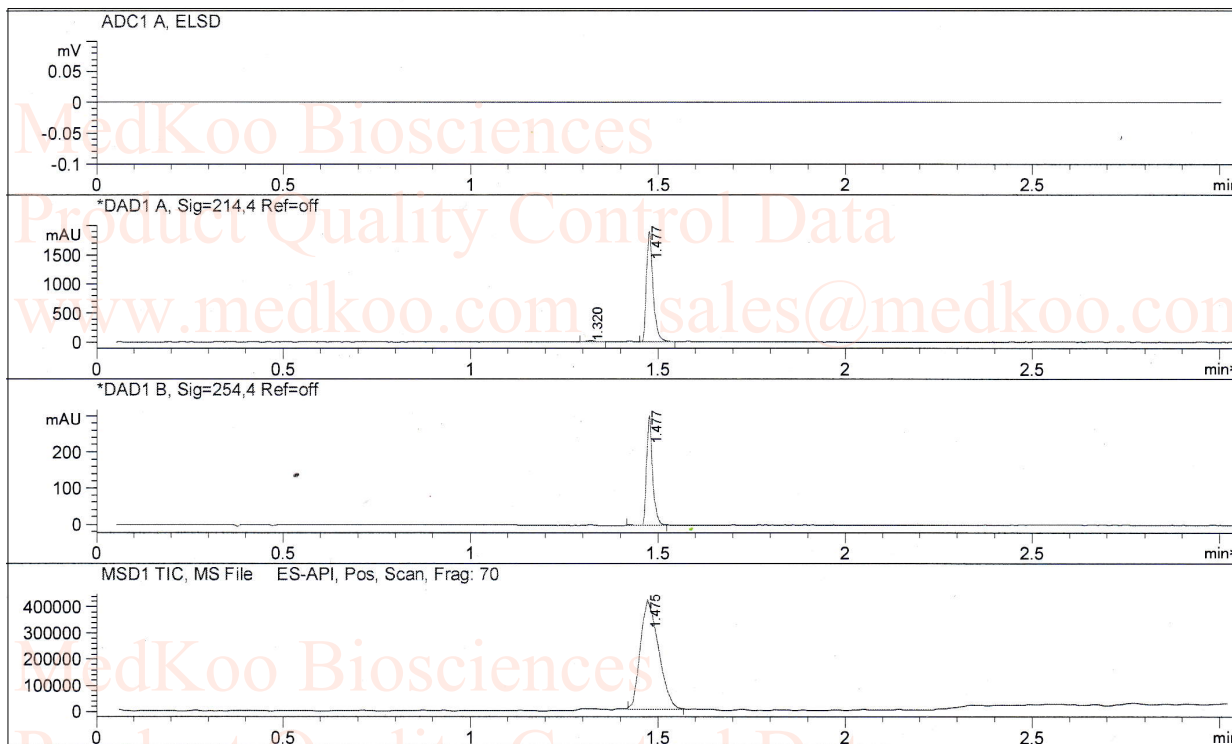
Chemical Formula: C₂₆H₂₉N₅O₃S

Exact Mass: 491.1991

Molecular Weight: 491.61

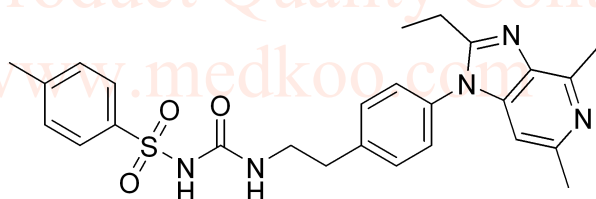
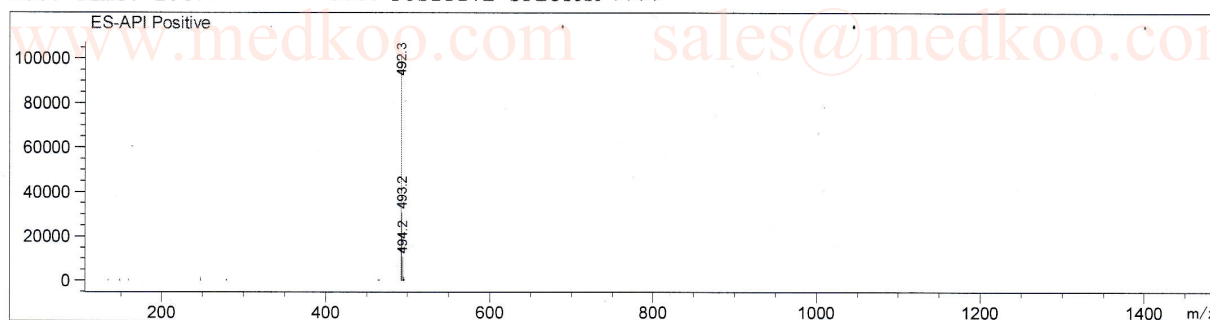
Grapiprant LC/MS analysis

Method Info : Mobile Phase : A:water(0.01%TFA) B:ACN(0.01%TFA)
Gradient:5%B for 0.2min,increase to 95%B within 1.5min,
95%B for 1.5min,back to 5%B within 0.01min
Flow Rate :2ml/min
Column :Sunfire, 50*4.6mm,3.5um
Column Temperature:50C



Ret. Time: 1.47

<<<< POSITIVE SPECTRA >>>>



MedKoo Cat#: 522545

Name: Grapiprant

CAS#: 415903-37-6

Lot#:A9T01K24

Chemical Formula: C₂₆H₂₉N₅O₃S

Exact Mass: 491.1991

Molecular Weight: 491.61