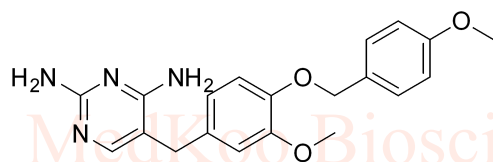


7.455
7.330
7.309
6.913
6.897
6.848
6.667
6.647
6.052
5.692
4.905
3.718
3.690
3.501
3.336

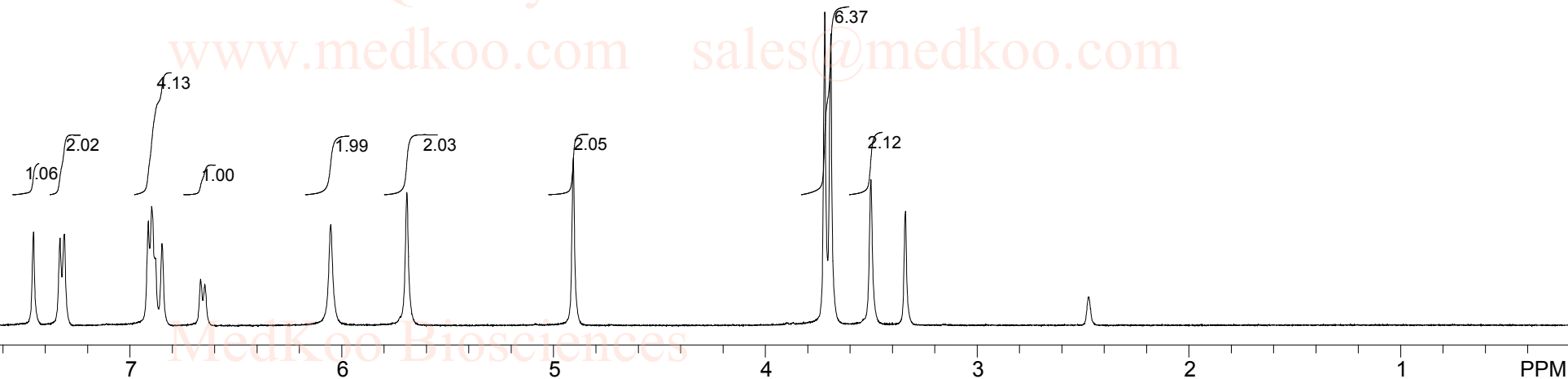
GW-2580 HNMR Analysis, Solvent = DMSO-d6

www.medkoo.com sales@medkoo.com



MedKoo Cat#: 401482
Name: GW2580
CAS#: 870483-87-7
Lot#: SSC60603
Chemical Formula: C20H22N4O3
Exact Mass: 366.16919
Molecular Weight: 366.41

www.medkoo.com sales@medkoo.com



www.medkoo.com sales@medkoo.com

GW2580.d6-DMSO,400MHz

F1: 399.796	F2: 100.538	SW1: 6410	OF1: 2398.7	PTS1d: 16384
EX: s2pul	PW: 18.0 usec	PD: 1.0 sec	NA: 16	LB: 0.0

Nuts - \$GW3580-DMSO.fid

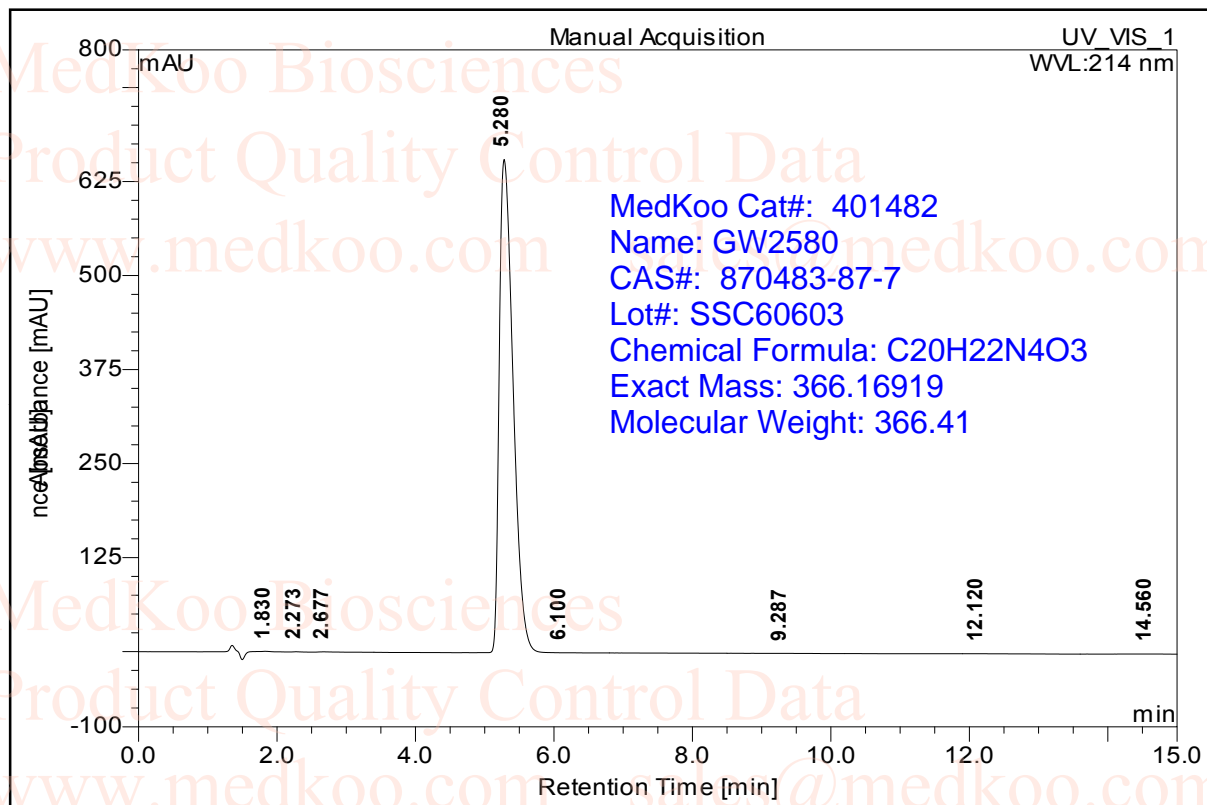
MedKoo Biosciences

www.medkoo.com

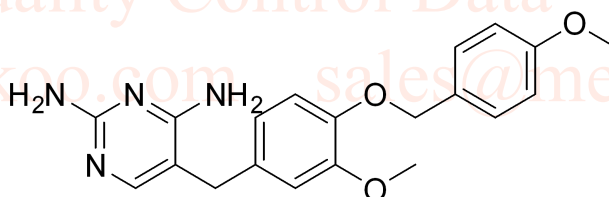
sales@medkoo.com

GW-2580 HPLC Analysis

Sample Name:	GW-2580	Injection Volume:	1.0
Vial Number:	RD1	Channel:	UV_VIS_1
Sample Type:	unknown	Wavelength:	214
Control Program:		Bandwidth:	4
Quantif. Method:	default	Dilution Factor:	1.0000
Run Time (min):	17.40	Sample Weight:	1.0000
		Sample Amount:	1.0000

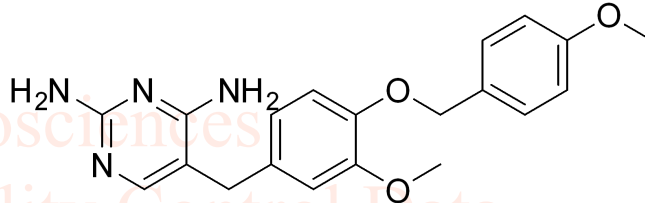
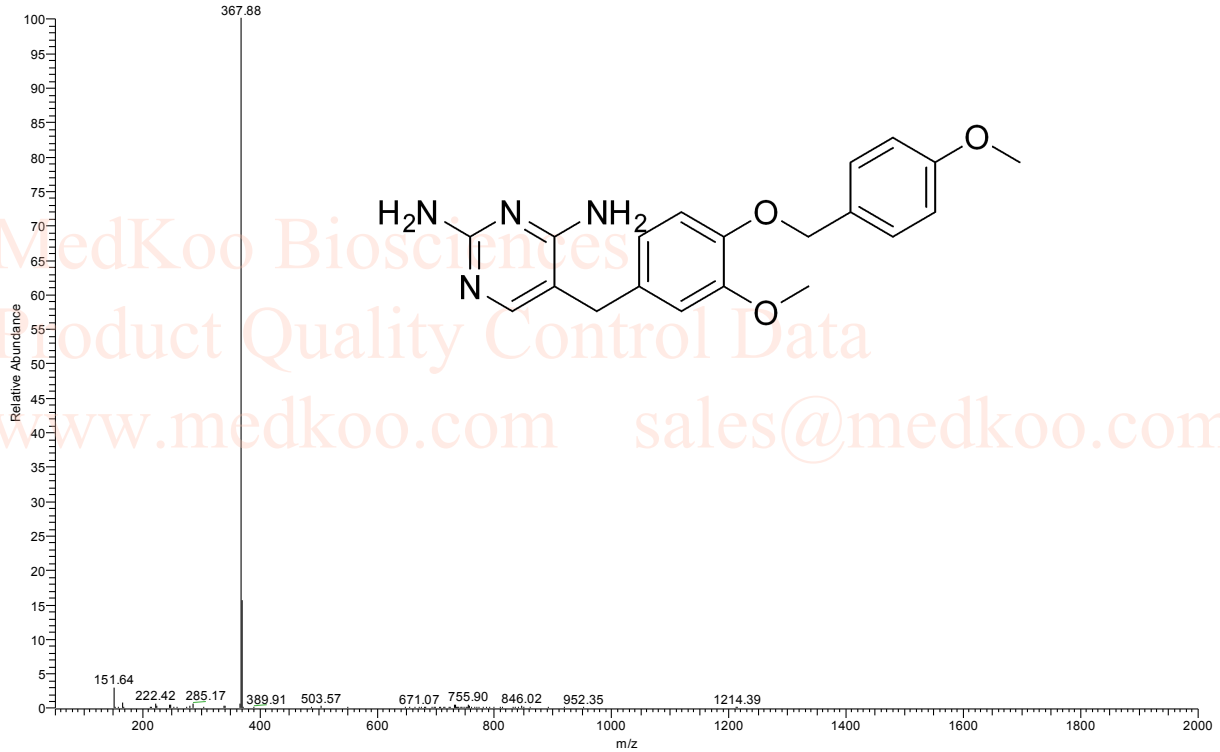


No.	Ret.Time min	Peak Name	Height mAU	Area mAU*min	Rel.Area %	Amount n.a.	Type
1	1.83	n.a.	0.575	0.097	0.06	n.a.	BMB*
2	2.27	n.a.	0.340	0.038	0.03	n.a.	BMB*
3	2.68	n.a.	0.390	0.086	0.06	n.a.	bMB*
4	5.28	n.a.	655.755	151.799	99.75	n.a.	BMB*
5	6.10	n.a.	0.003	0.006	0.00	n.a.	BMB*
6	9.29	n.a.	0.017	0.021	0.01	n.a.	BMB*
7	12.12	n.a.	0.090	0.028	0.02	n.a.	BMB*
8	14.56	n.a.	0.173	0.097	0.06	n.a.	BMB*
Total:			657.343	152.172	100.00	0.000	

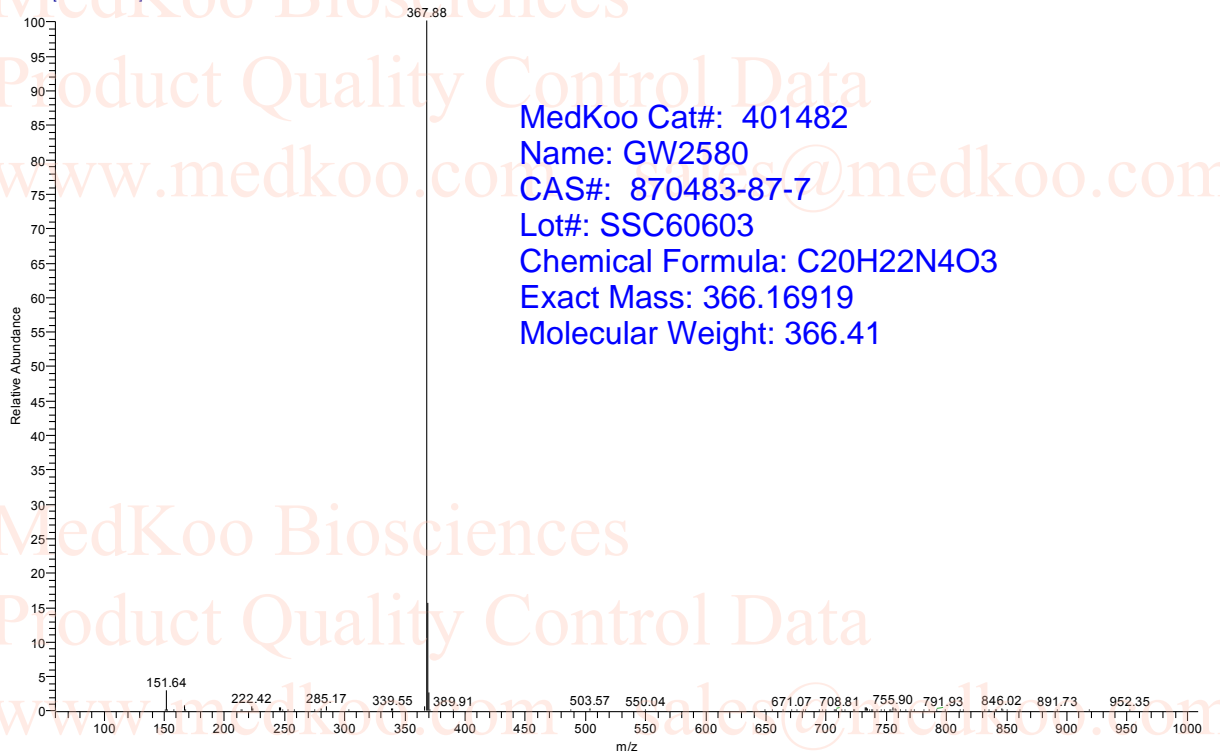


GW-2580 MS Analysis

GW2580_#25 RT: 0.24 AV: 1 NL: 1.81E5 T: ITMS + c ESI
Full ms [50.00-2000.00]



GW2580_#25 RT: 0.24 AV: 1 NL: 1.81E5 T: ITMS + c ESI
Full ms [50.00-2000.00]



MedKoo Cat#: 401482

Name: GW2580

CAS#: 870483-87-7

Lot#: SSC60603

Chemical Formula: C₂₀H₂₂N₄O₃

Exact Mass: 366.16919

Molecular Weight: 366.41