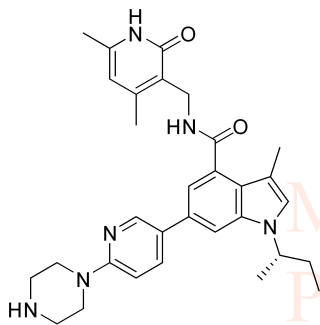




8.506
8.500
8.153
7.924
7.917
7.902
7.895
7.733
7.730
7.260
7.177
7.174
6.895
6.873
5.872
4.361
4.349
3.462
3.449
3.437
3.333
2.822
2.809
2.797
2.518
2.514
2.510
2.505
2.501
2.246
2.168
2.115
1.833
1.814
1.808
1.796
1.790
1.420
1.403
0.754
0.736
0.718
0.008

NMR Analysis, GSK126, solvent=DMSO-d6



MedKoo Cat#: 406228
Name: GSK126
CAS#: 1346574-57-9
Lot#: C8R12B31
Chemical Formula: C₃₁H₃₈N₆O₂
Exact Mass: 526.30562
Molecular Weight: 526.67

Current Data Parameters
NAME GSK126
EXPNO 1
PROCNO 1

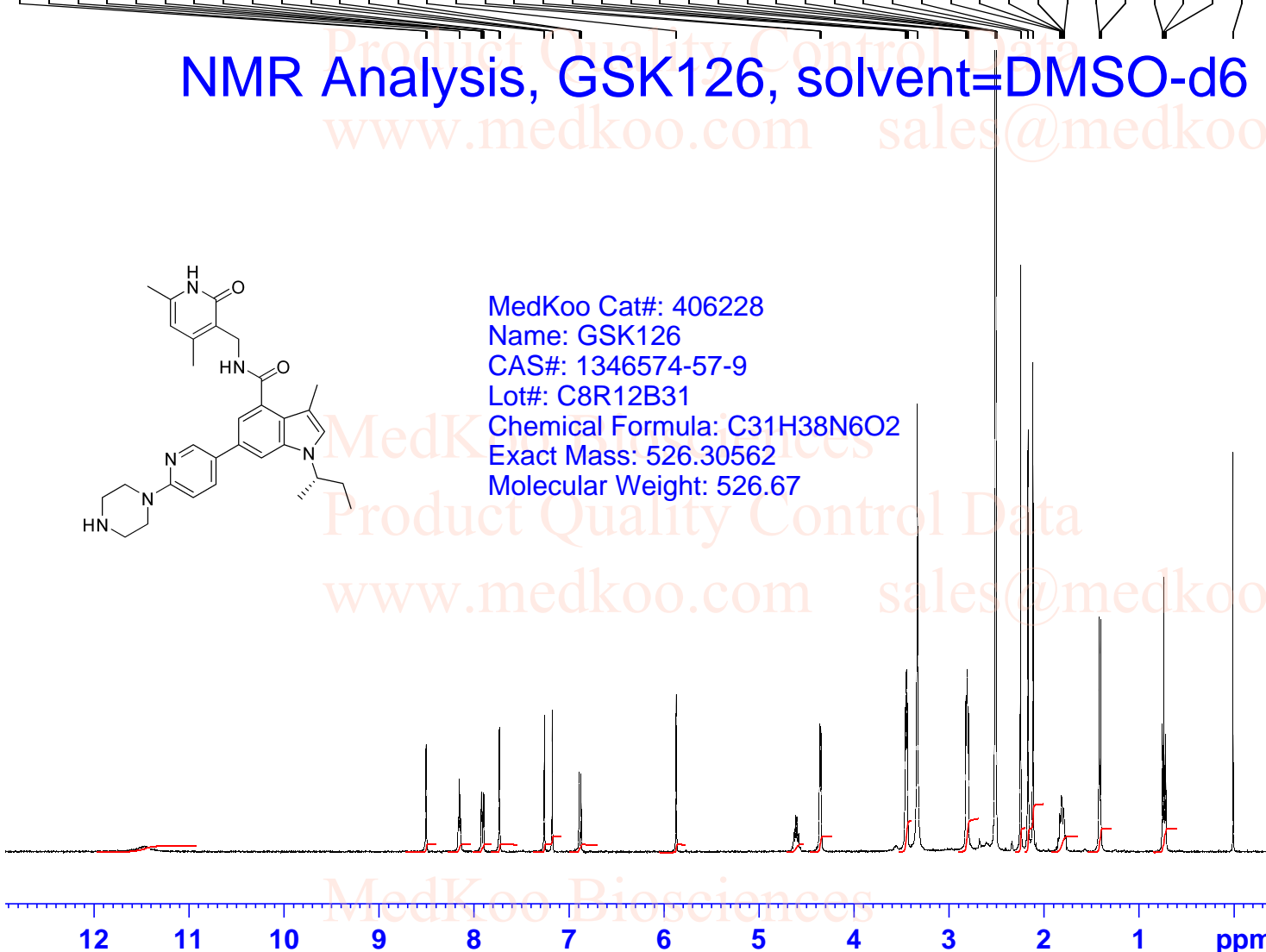
F2 - Acquisition Parameters

INSTRUM spect
PROBHD 5 mm PADUL 13C
PULPROG zg30

TD 65536
SOLVENT DMSO
NS 8
DS 2
SWH 8012.820 Hz
FIDRES 0.122266 Hz
AQ 4.0894465 sec
RG 199.46
DW 62.400 usec
DE 6.50 usec
TE 297.0 K
D1 1.00000000 sec
TD0 1

==== CHANNEL f1 =====
SF01 400.1324710 MHz
NUC1 1H
P1 10.00 usec
PLW1 20.00000000 W

F2 - Processing parameters
SI 65536
SF 400.1300000 MHz
WDW EM
SSB 0
LB 0.30 Hz
GB 0
PC 1.00



0.85
1.00
1.02
1.01
0.96
1.98
0.94
0.96
1.02
2.00
3.97
4.24
3.08
6.06
2.03
3.02
3.00

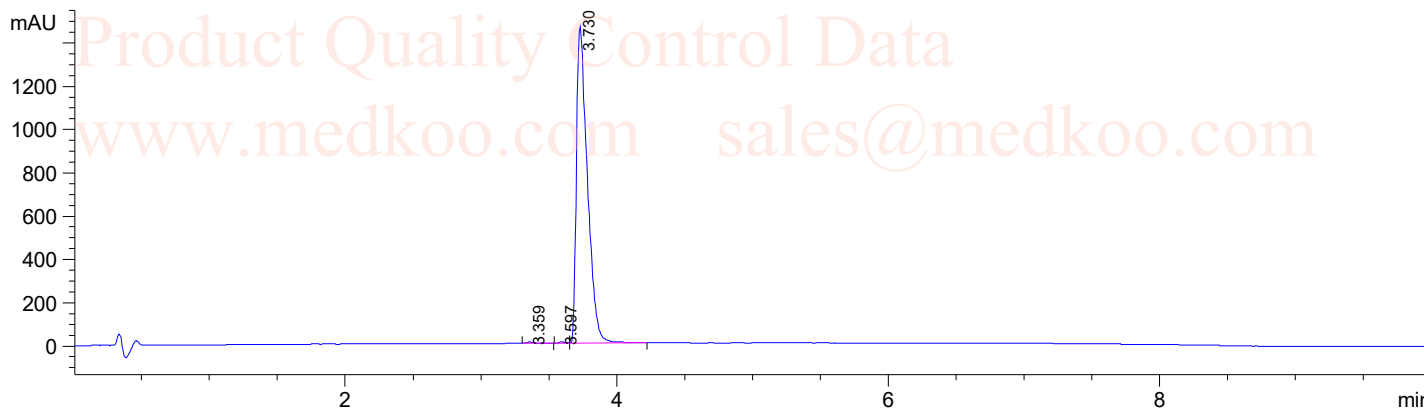
HPLC Analysis, GSK126

Sample Name : 1346574-57-9
Acq. Operator : 1
Spec. Reported : Integration

Tgt Mass(EZX) :
Location : P1-A-02
Inj : 0
Inj Volume : 8 ul

MedKoo Biosciences

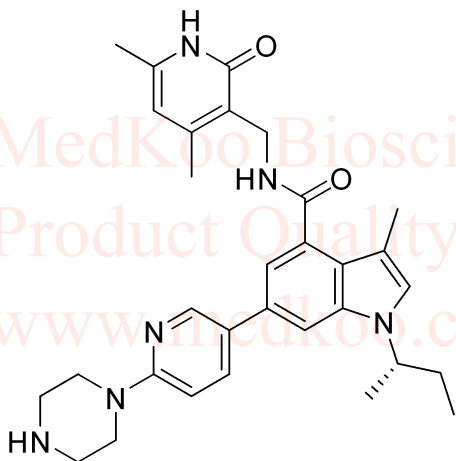
DAD1 A, Sig=214,4 Ref=off



MedKoo Biosciences

Integration Results for DAD1 A, Sig=214,4 Ref=off

RetTim	Width	Area	Height	Area%
3.36	0.06	25.15	5.55	0.31
3.60	0.05	19.35	5.52	0.23
3.73	0.08	8199.75	1463.87	99.46



MedKoo Cat#: 406228
Name: GSK126
CAS#: 1346574-57-9
Lot#: C8R12B31
Chemical Formula: C₃₁H₃₈N₆O₂
Exact Mass: 526.30562
Molecular Weight: 526.67

MedKoo Biosciences

Product Quality Control Data

www.medkoo.com

sales@medkoo.com

www.medkoo.com

MedKoo Biosciences

