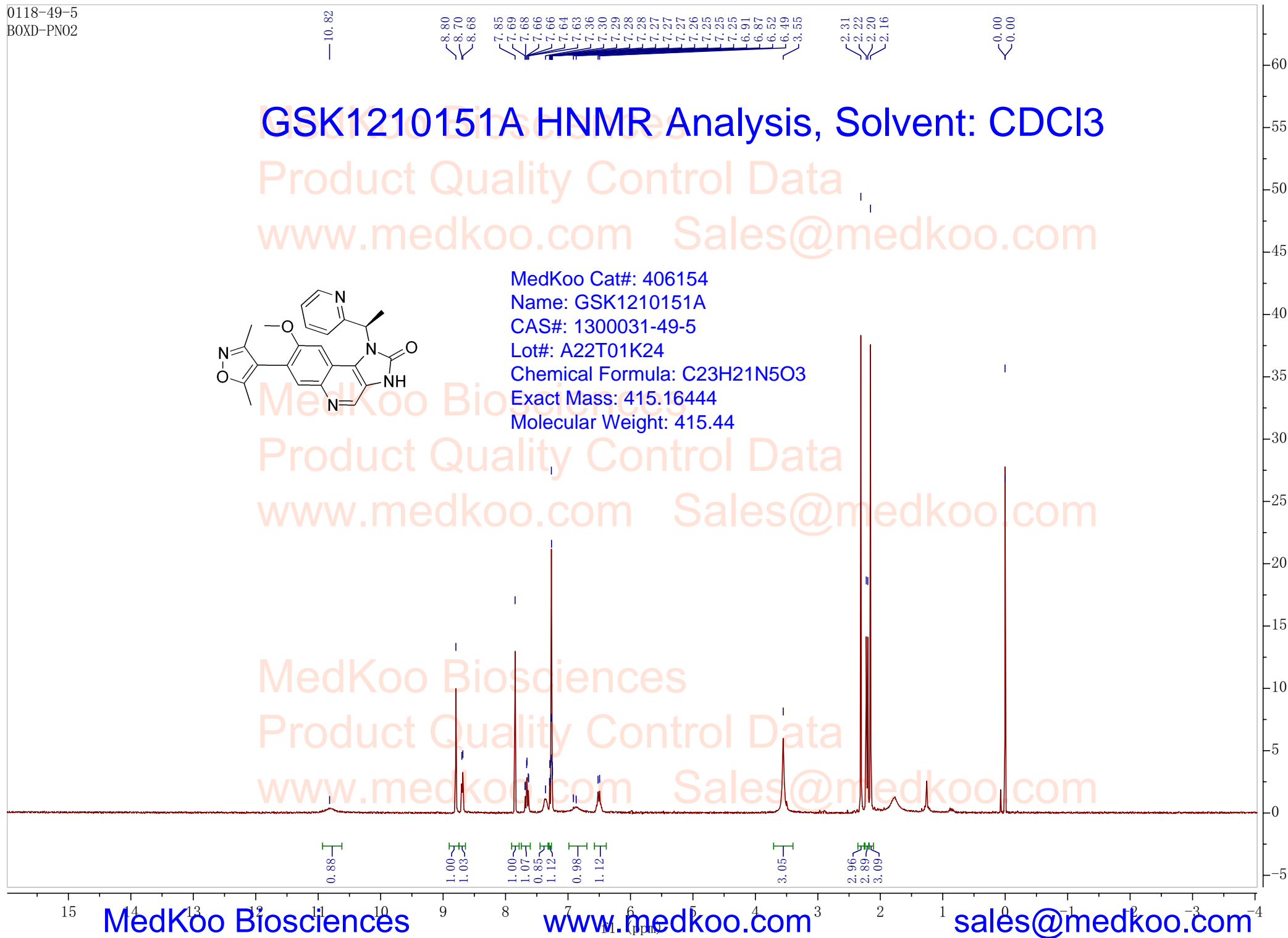


MedKoo Cat#: 406154
Name: GSK1210151A
CAS#: 1300031-49-5
Lot#: A22T01K24
Chemical Formula: C₂₃H₂₁N₅O₃
Exact Mass: 415.444
Molecular Weight: 415.44



GSK1210151A HPLC Analysis

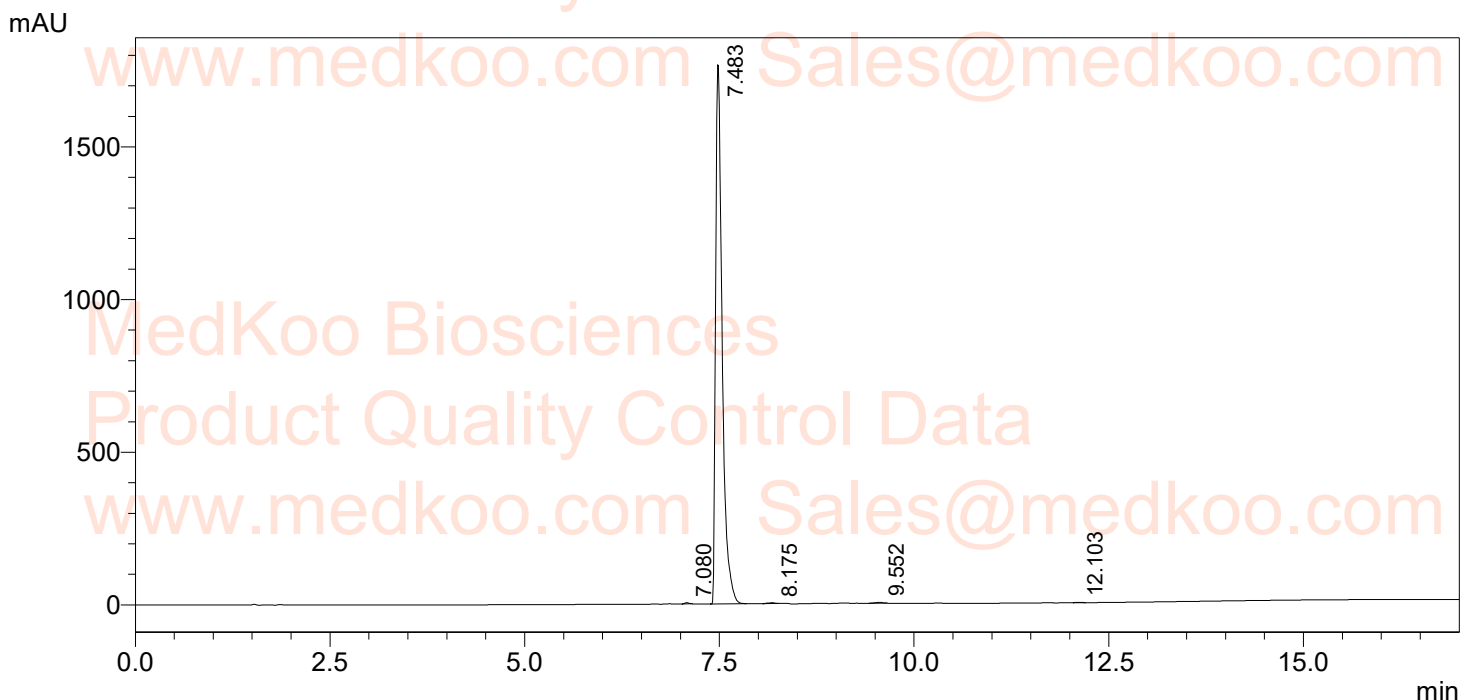
Sample Name : 1300031-49-5
Vial# : 1-64

Injection Volume : 1 uL

Data Filename : E:\DATA\20220119\1300031-49-5.lcd
Method Filename : C:\LabSolutions\Data\Project1\LCMS-WT1.lcm

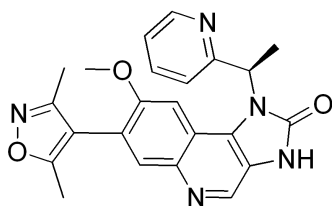
FLOW RATE: 1ML/MIN
COLUMN: KROMASIL 100-5-C8 150*4.6MM 5UM
COLUME TEMPERATURE: 25
GRADIENT PROGRAMME:
TIME(MIN) MOBILE PHASE-A(H2O+0.1%HCOOH) MOBILE PHASE-B(CH3CN+0.1%HCOOH)
0 90 10
10 0 100
15 0 100

Product Quality Control Data



PDA Ch2 254nm

Peak#	Ret. Time	Height	Height%	Area	Area%
1	7.080	3758	0.212	13177	0.125
2	7.483	1765278	99.453	10484110	99.523
3	8.175	2660	0.150	15252	0.145
4	9.552	2495	0.141	17733	0.168
5	12.103	797	0.045	4062	0.039
总计		1774987	100.000	10534334	100.000



MedKoo Cat#: 406154
Name: GSK1210151A
CAS#: 1300031-49-5
Lot#: A22T01K24
Chemical Formula: C23H21N5O3
Exact Mass: 415.16444
Molecular Weight: 415.44

sales@medkoo.com

www.medkoo.com

MedKoo Biosciences

GSK1210151A MS Analysis

Sample Name : 1300031-49-5
User : System Administrator
Sample Type : Unknown
Location : 1
Vial# : 64
Inj. Volume : 1
Data File : 1300031-49-5.lcd
MethodFile : LCMS-WT1.lcm

MedKoo Biosciences
Product Quality Control Data
www.medkoo.com Sales@medkoo.com

