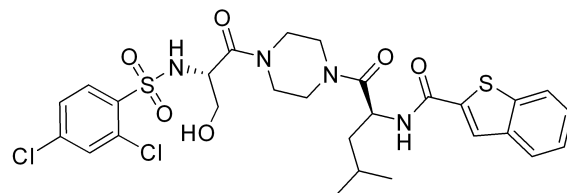


GSK1016790A HNMR Analysis, Solvent:CDCl3

www.medkoo.com sales@medkoo.com



MedKoo Biosciences

MedKoo Cat#: 531880

Name: GSK1016790A

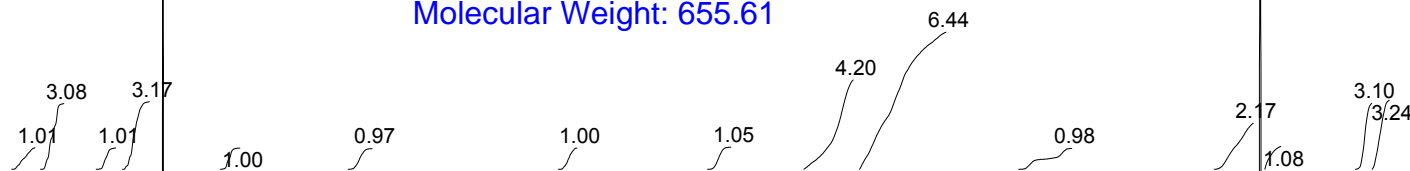
CAS#: 942206-85-1

Lot#: A20T08K20

Chemical Formula: C₂₈H₃₂Cl₂N₄O₆S₂

Exact Mass: 654.114

Molecular Weight: 655.61



MedKoo Biosciences

10

8

6

4

2

0

PPM

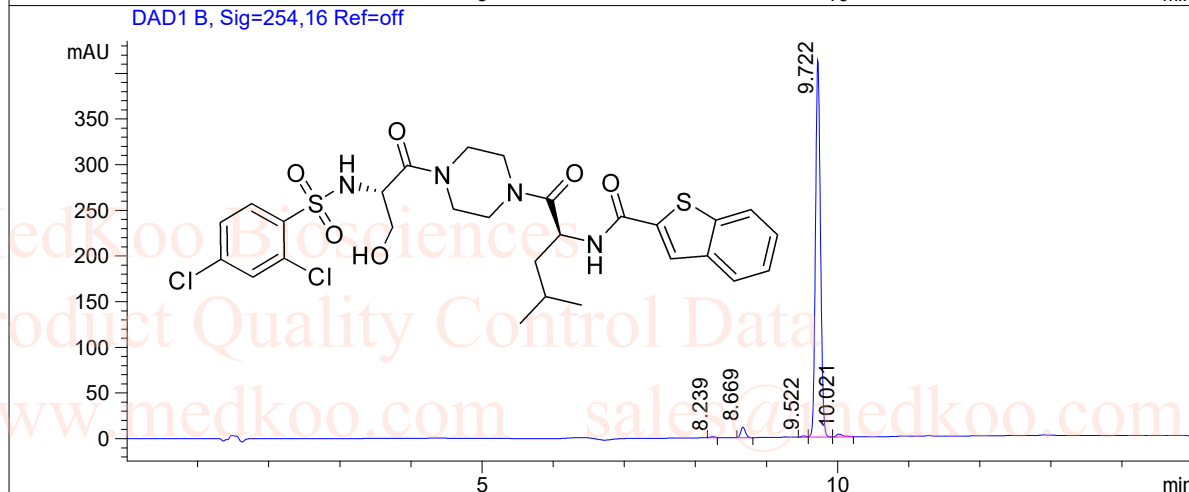
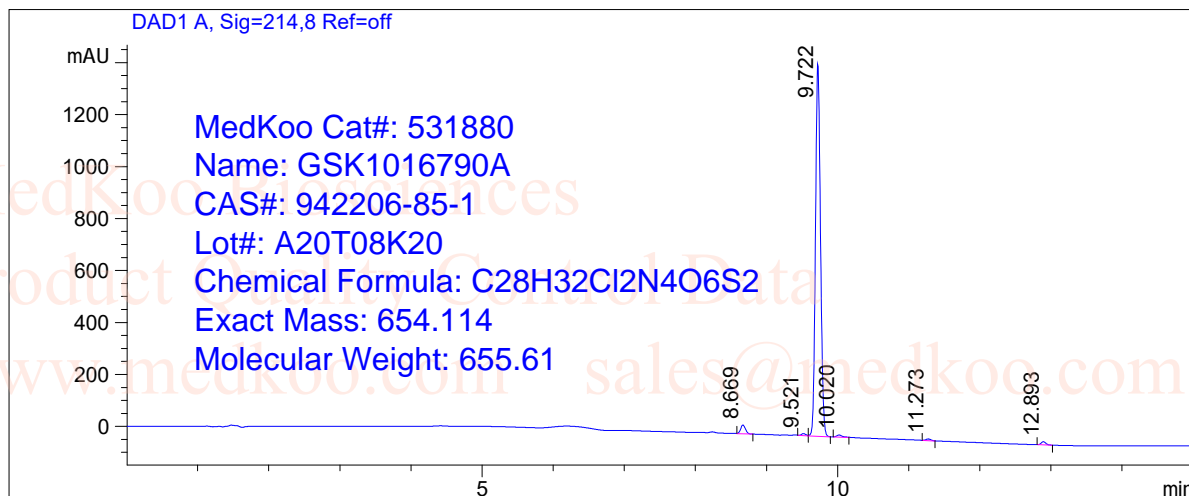
MedKoo Biosciences

www.medkoo.com

sales@medkoo.com

GSK1016790A HPLC Analysis

Sample Name : 942206-85-1
 Data File : D:\DATA-LCMS-13\942206-85-1.D
 Inj. Vol. : 1ul
 Location : Vial 64
 Acq Operator : LCMS-13
 Acq. Method : D:\data-lcms-13\10\1\C2-P-30-95-15MIN.M
 Method Info. : column:Ecclipse XDB-C18 5um 4.6*150mm ;mobile phase:B(ACN), A(0.02%NH4AC); gradient(B%):as Acq.Method above



Integration Results

Signal 1: DAD1 A, Sig=214,8 Ref=off

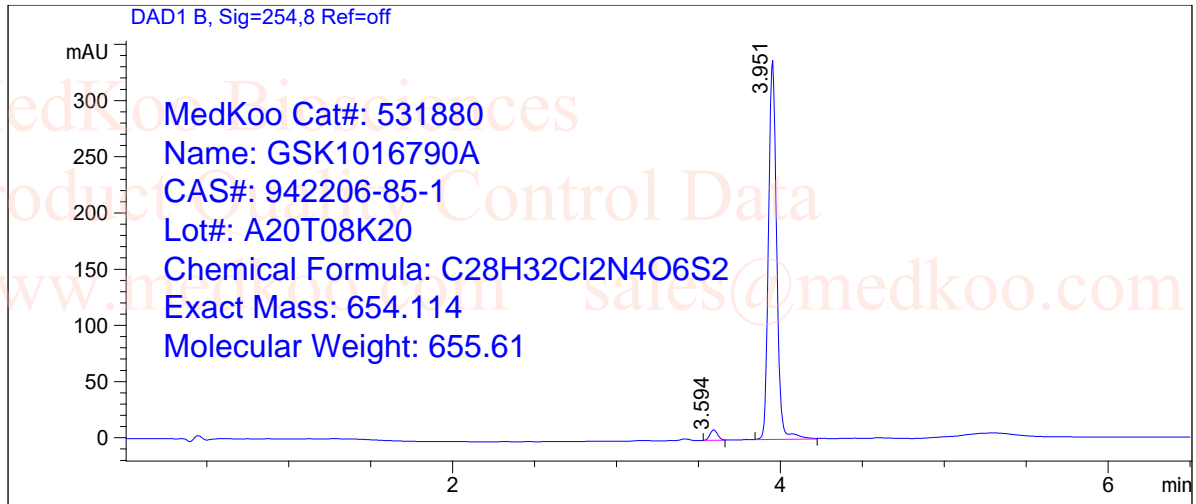
#	R.T.	Type	Height	Height%	Width	Area	Area %
1	8.669	BB	33.787	2.247	0.075	159.359	2.139
2	9.521	BV	7.600	0.505	0.069	33.254	0.446
3	9.722	VB	1435.906	95.489	0.078	7122.640	95.620
4	10.020	BB	8.053	0.536	0.086	45.438	0.610
5	11.273	MF	6.214	0.413	0.083	30.784	0.413
6	12.893	BB	12.176	0.810	0.073	57.389	0.770

Signal 2: DAD1 B, Sig=254,16 Ref=off

#	R.T.	Type	Height	Height%	Width	Area	Area %
1	8.239	MM	1.393	0.322	0.077	6.469	0.303
2	8.669	BB	11.369	2.632	0.075	53.348	2.501
3	9.522	MF	1.506	0.349	0.082	7.435	0.349
4	9.722	FM	414.538	95.955	0.082	2044.149	95.833
5	10.021	FM	3.205	0.742	0.113	21.642	1.015

GSK1016790A LC/MS Analysis

Sample Name : 942206-85-1
Data File : D:\DATA-LCMS-13\1\942206-85-1.D
Inj. Vol. : 1ul
Acq Operator : LCMS-13 Location : Vial 64
Acq. Method : D:\data-lcms-13\10\1\P-05-95.M
Method Info. : column:Xbridge C18 5um 4.6*50mm ;mobile phase:B(ACN),
A(0.02%NH4Ac); gradient(B%):as Acq.Method above



Integration Results

Signal 1: DAD1 B, Sig=254,8 Ref=off

#	R.T.	Type	Height	Height%	Width	Area	Area %
1	3.594	FM	9.296	2.664	0.054	29.890	2.502
2	3.951	MM	339.678	97.336	0.057	1164.976	97.498

