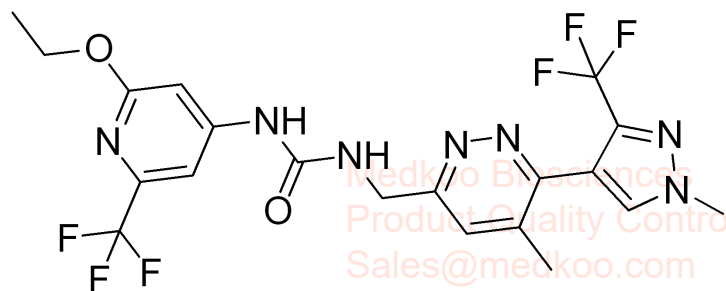
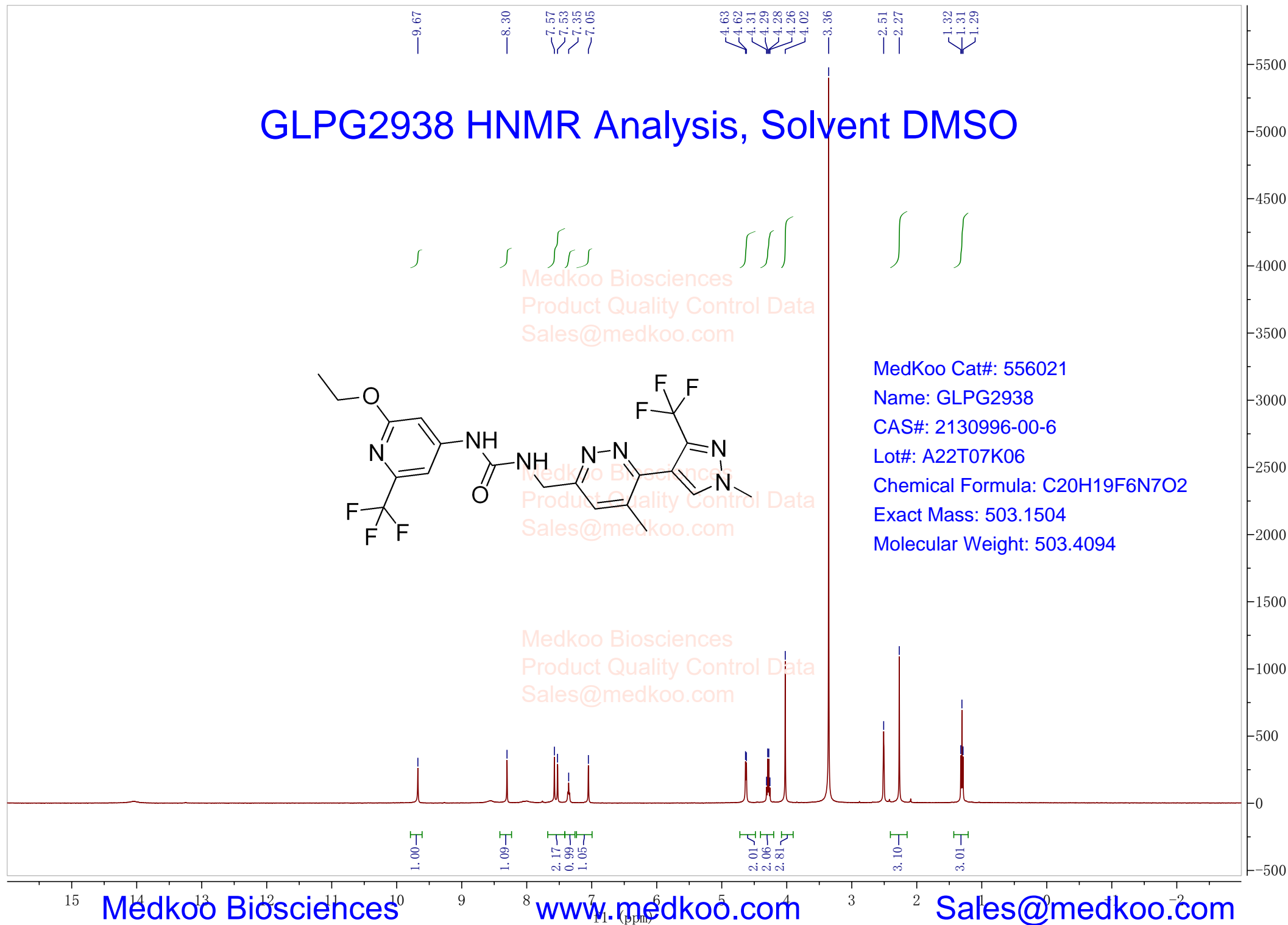


# GLPG2938 HNMR Analysis, Solvent DMSO



MedKoo Cat#: 556021  
Name: GLPG2938  
CAS#: 2130996-00-6  
Lot#: A22T07K06  
Chemical Formula: C<sub>20</sub>H<sub>19</sub>F<sub>6</sub>N<sub>7</sub>O<sub>2</sub>  
Exact Mass: 503.1504  
Molecular Weight: 503.4094

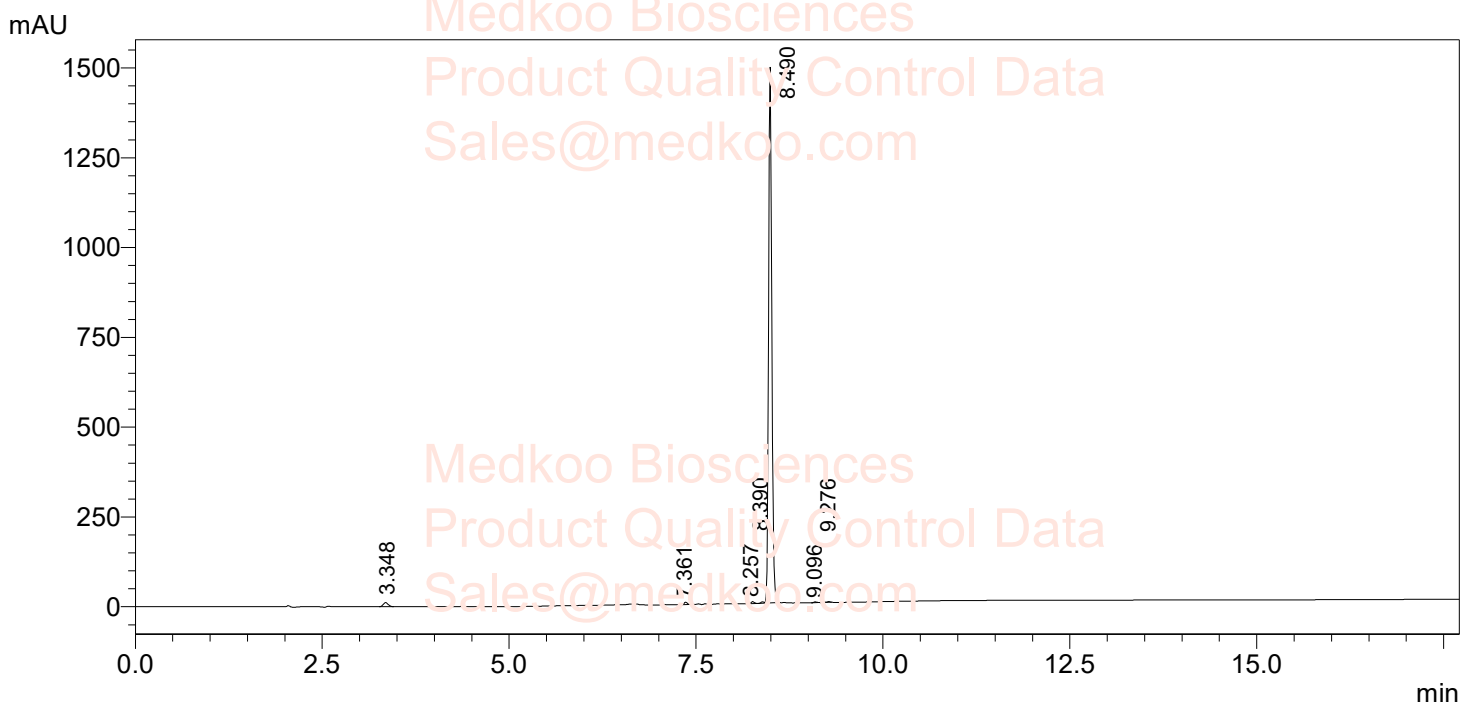


# GLPG2938 HPLC Analysis

Sample Name : 2130996-00-6  
 Vial# : 1-88  
 Injection Volume : 1  $\mu$ L

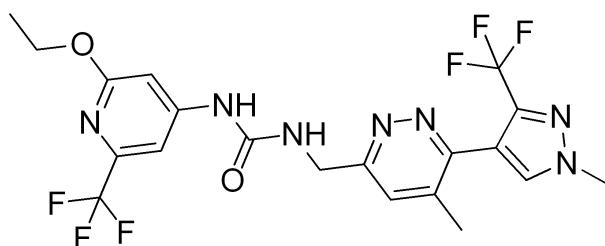
Data Filename : E:\DATA\20220616\2130996-00-6.lcd  
 Method Filename : C:\LabSolutions\Data\Project1\LCMS-WT1.lcm

FLOW RATE: 1ML/MIN  
 COLUMN: INERTSIL ODS-SP 150\*4.6MM 5UM  
 COLUME TEMPERATURE: 25  
 GRADIENT PROGRAMME:  
 TIME(MIN) MOBILE PHASE-A(H2O+0.1%HCOOH) MOBILE PHASE-B(CH3CN+0.1%HCOOH)  
 0 90 10  
 5 0 100  
 15 0 100



PDA Ch2 254nm

Peak#	Ret. Time	Height	Height%	Area	Area%
1	3.348	11330	0.744	50944	1.117
2	7.361	6758	0.444	18706	0.410
3	8.257	5293	0.342	15292	0.335
4	8.390	4073	0.262	11520	0.253
5	8.490	1492323	97.958	4453693	97.650
6	9.096	2218	0.146	6111	0.134
7	9.276	1437	0.094	4591	0.101
总计		1523139	100.000	4507809	100.000



MedKoo Cat#: 556021

Name: GLPG2938

CAS#: 2130996-00-6

Lot#: A22T07K06

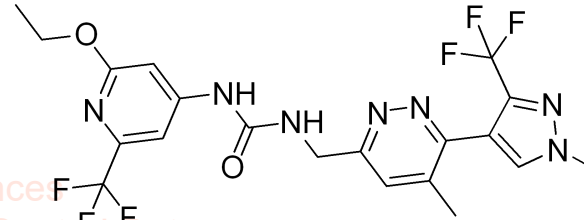
Chemical Formula: C<sub>20</sub>H<sub>19</sub>F<sub>6</sub>N<sub>7</sub>O<sub>2</sub>

Exact Mass: 503.1504

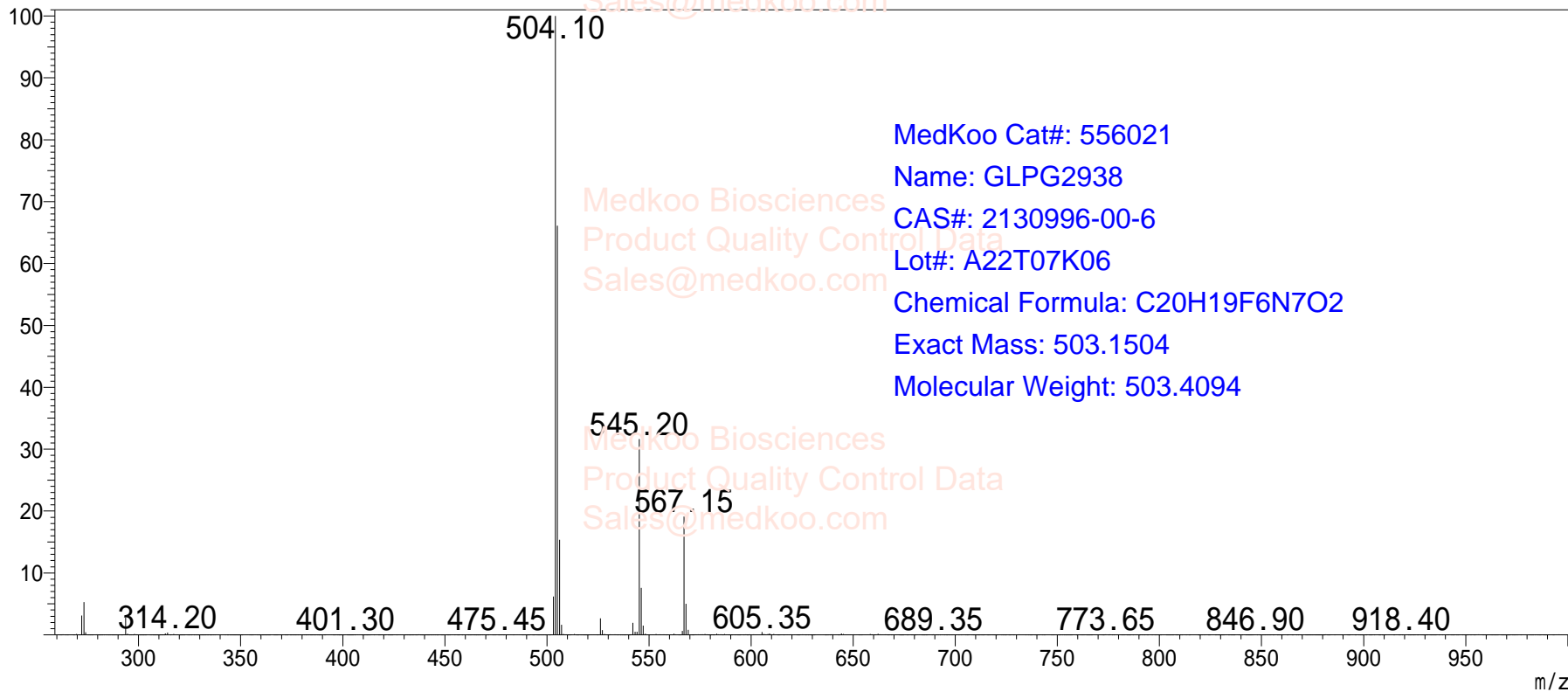
Molecular Weight: 503.4094

# GLPG2938 MS Analysis

Sample Name : 2130996-00-6  
User : System Administrator  
Sample Type : Unknown  
Tray # : 1  
Vial # : 88  
Inj. Volume : 1  
Data File : 2130996-00-6.lcd  
Method File : LCMS-WT1.lcm



Medkoo Biosciences  
Product Quality Control Data  
Sales@medkoo.com



MedKoo Cat#: 556021  
Name: GLPG2938  
CAS#: 2130996-00-6  
Lot#: A22T07K06  
Chemical Formula: C<sub>20</sub>H<sub>19</sub>F<sub>6</sub>N<sub>7</sub>O<sub>2</sub>  
Exact Mass: 503.1504  
Molecular Weight: 503.4094

Medkoo Biosciences  
Product Quality Control Data  
Sales@medkoo.com