

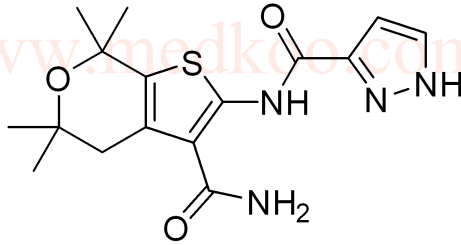
# GLPG1837 NMR Analysis, Solvent = DMSO-d6



— 13.561

— 12.478

7.964  
7.960  
7.958  
7.955  
7.715  
7.685  
7.632  
7.592  
7.564  
7.501  
7.418  
7.333  
7.276  
7.228  
7.212  
7.182  
7.108  
7.094  
7.076  
7.030  
6.813  
6.808  
6.803  
5.767  
3.345  
2.741  
2.518  
2.514  
2.510  
2.505  
2.501  
1.462  
1.212



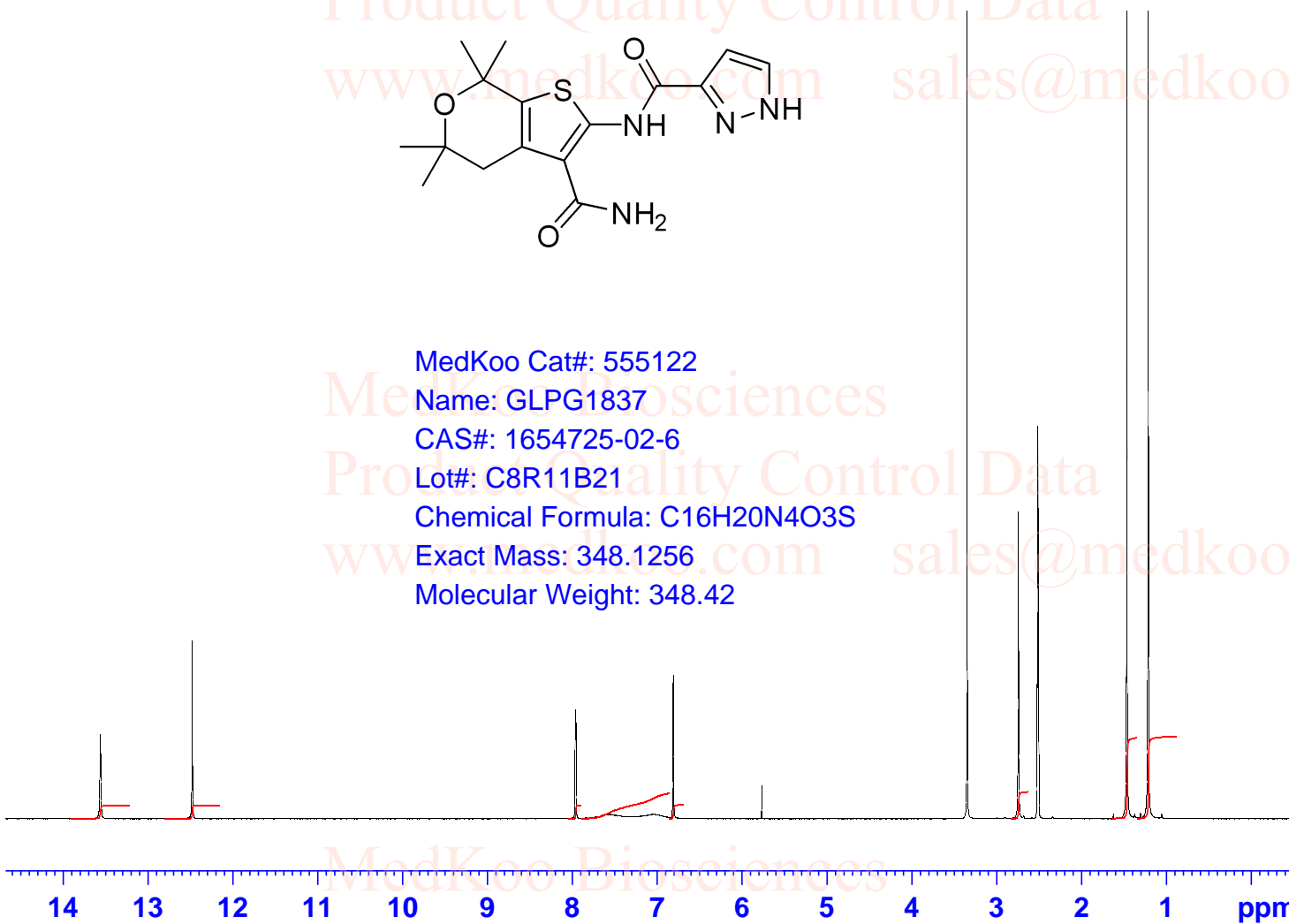
MedKoo Cat#: 555122  
Name: GLPG1837  
CAS#: 1654725-02-6  
Lot#: C8R11B21  
Chemical Formula: C<sub>16</sub>H<sub>20</sub>N<sub>4</sub>O<sub>3</sub>  
Exact Mass: 348.1256  
Molecular Weight: 348.42

Current Data Parameters  
NAME GLPG1837  
EXPNO 1  
PROCNO 1

F2 - Acquisition Parameters  
INSTRUM spect  
PROBHD 5 mm PADUL 13C  
PULPROG zg30  
TD 65536  
SOLVENT DMSO  
NS 16  
DS 2  
SWH 8012.820 Hz  
FIDRES 0.122266 Hz  
AQ 4.0894465 sec  
RG 199.46  
DW 62.400 usec  
DE 6.50 usec  
TE 295.5 K  
D1 1.00000000 sec  
TD0 1

==== CHANNEL f1 =====  
SF01 400.1324710 MHz  
NUC1 1H  
P1 10.00 usec  
PLW1 20.00000000 W

F2 - Processing parameters  
SI 65536  
SF 400.1300000 MHz  
WDW EM  
SSB 0  
LB 0.30 Hz  
GB 0  
PC 1.00



0.99 1.00 1.00 1.91 1.04 2.01 6.06 6.15

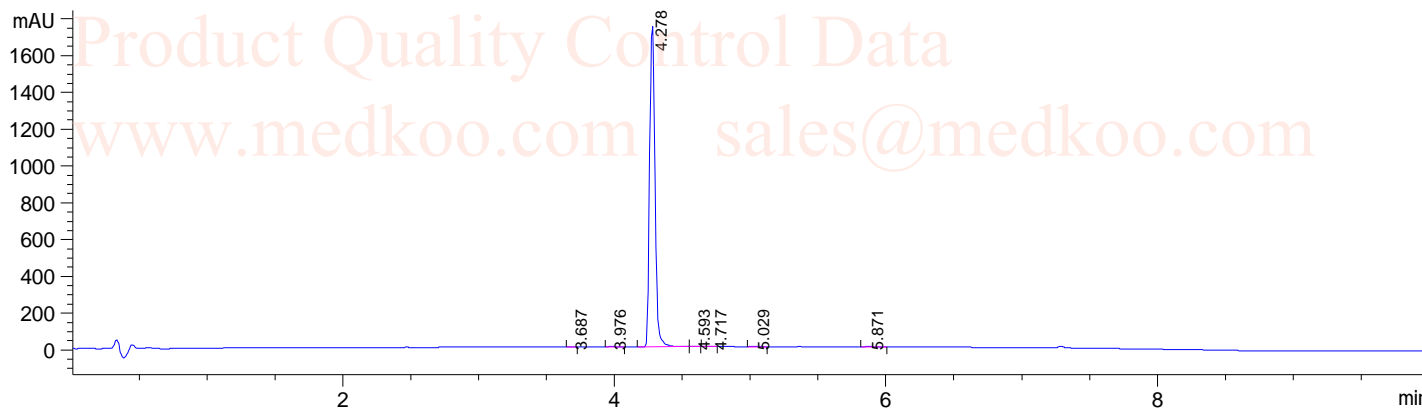
# GLPG1837 HPLC Analysis

Sample Name : GLPG1837  
Acq. Operator : 1  
Spec. Reported : Integration

Tgt Mass(EZX) :  
Location : P1-D-06  
Inj : 0  
Inj Volume : 7 ul

MedKoo Biosciences

DAD1 A, Sig=214,4 Ref=off



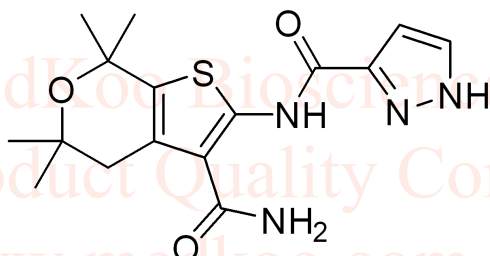
Integration Results for DAD1 A, Sig=214,4 Ref=off

RetTim	Width	Area	Height	Area%
3.69	0.04	2.93	1.16	0.06
3.98	0.05	7.75	2.72	0.16
4.28	0.04	4880.04	1744.49	99.20
4.59	0.04	5.38	2.19	0.11
4.72	0.05	4.87	1.67	0.10
5.03	0.05	6.94	2.00	0.14
5.87	0.06	11.49	2.64	0.23

MedKoo Biosciences

Product Quality Control Data

www.medkoo.com sales@medkoo.com



MedKoo Cat#: 555122

Name: GLPG1837

CAS#: 1654725-02-6

Lot#: C8R11B21

Chemical Formula: C<sub>16</sub>H<sub>20</sub>N<sub>4</sub>O<sub>3</sub>S

Exact Mass: 348.1256

Molecular Weight: 348.42

MedKoo Biosciences

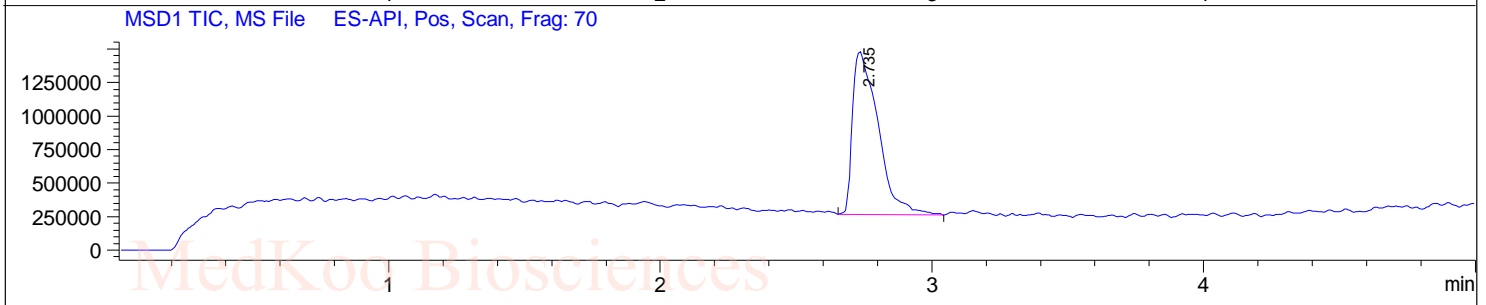
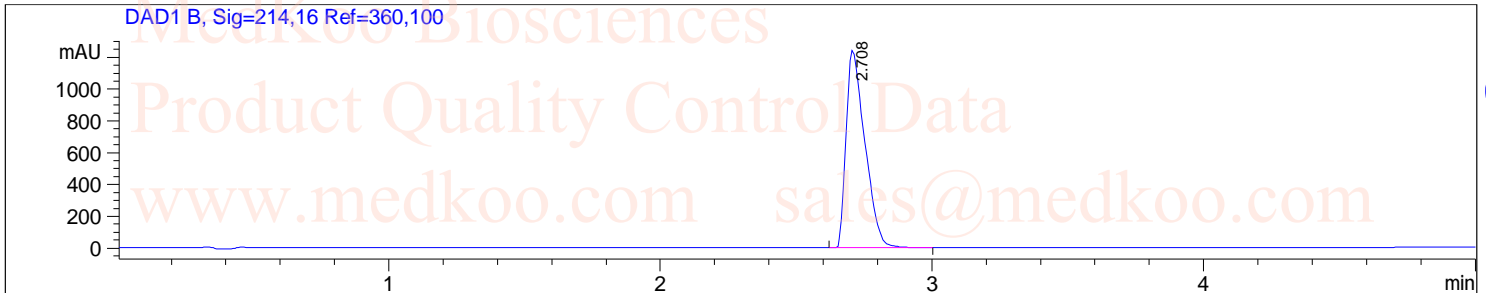
Product Quality Control Data

www.medkoo.com sales@medkoo.com

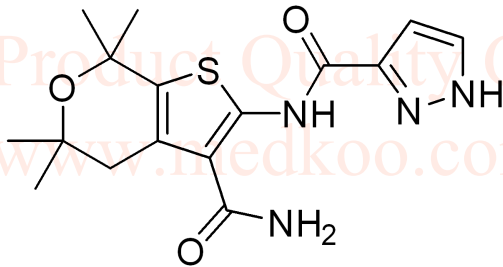
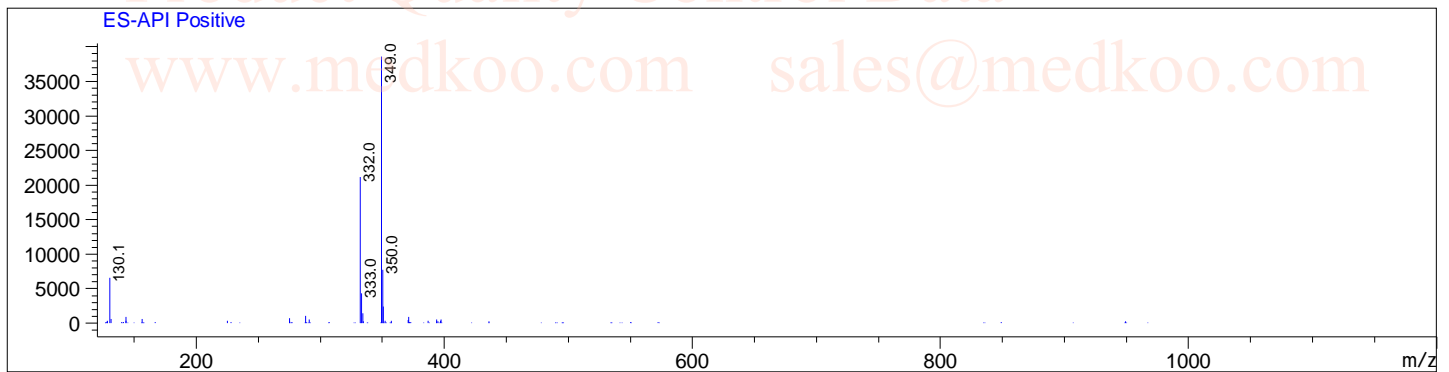
# GLPG1837 MS Analysis

Sample Name : GLPG1837  
Acq. Operator : 1  
Spec. Reported : MS Integration

Tgt Mass(EZX) :  
Location : Vial 12  
Inj : 1  
Inj Volume : 10 ul



Ret. Time: 2.74 <<<< POSITIVE SPECTRA >>>>



MedKoo Cat#: 555122

Name: GLPG1837

CAS#: 1654725-02-6

Lot#: C8R11B21

Chemical Formula: C<sub>16</sub>H<sub>20</sub>N<sub>4</sub>O<sub>3</sub>S

Exact Mass: 348.1256

Molecular Weight: 348.42