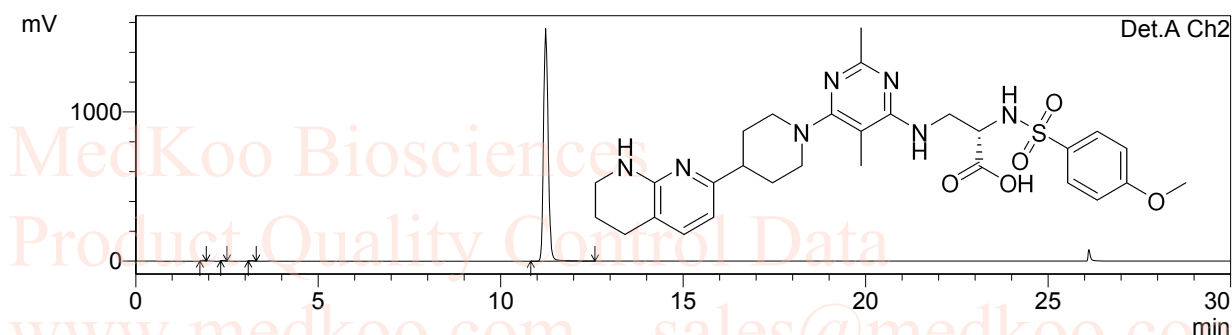
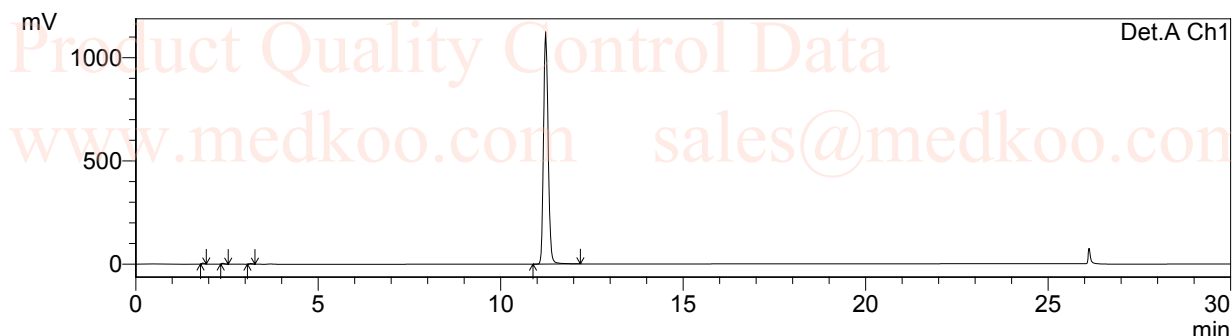


GLPG0187 HPLC Analysis

Column : Inertil ODS-3, 5um 4.6*150mm
 Mobile phase : Solvent A: H2O(0.05%H3PO4) Solvent B:ACN(0.05%H3PO4)
 Temperature : 40 °C
 Flow rate : 1mL/min
 Run time : 3min gradient(50%B), 15min gradient (50%-95%B),5 min(95%B),then 7min @(50%B)
 Detector : UV
 Wavelength : 220/254 nm
 User name : 1320346-97-1
 Notebook page :
 Sample description : in ACN
 Injection Volume : 1 uL

Data File Name : 1320346-97-1.lcd
 Method File Name : 350-1-50-95.lcm



- 1 Det.A Ch1/220nm
- 2 Det.A Ch2/254nm

PeakTable

Detector A Ch1 220nm

Peak#	Ret. Time	Area	Area %	Theoretical Plate#
1	1.837	22351	0.223	2836.306
2	2.383	19322	0.193	4205.260
3	3.151	18648	0.186	4663.080
4	11.227	9945036	99.397	35244.732
Total		10005357	100.000	

MedKoo Cat#: 205842

Name: GLPG0187

CAS#: 1320346-97-1

Lot #: A7T12K22

Chemical Formula: C29H37N7O5S

Exact Mass: 595.257

Molecular Weight: 595.71

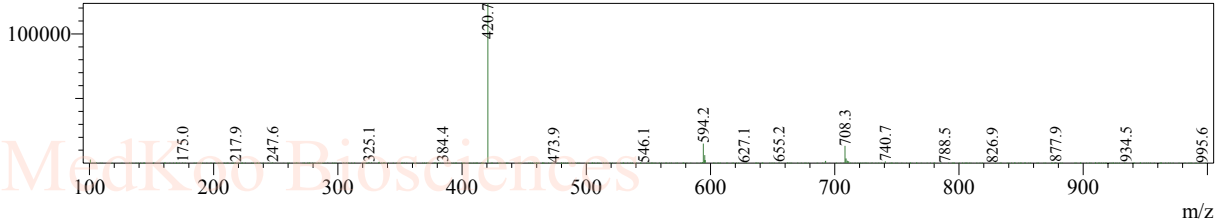
PeakTable

Detector A Ch2 254nm

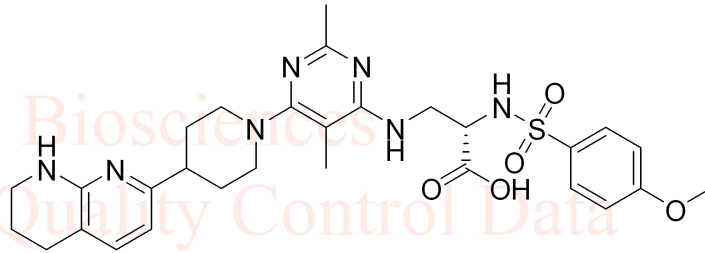
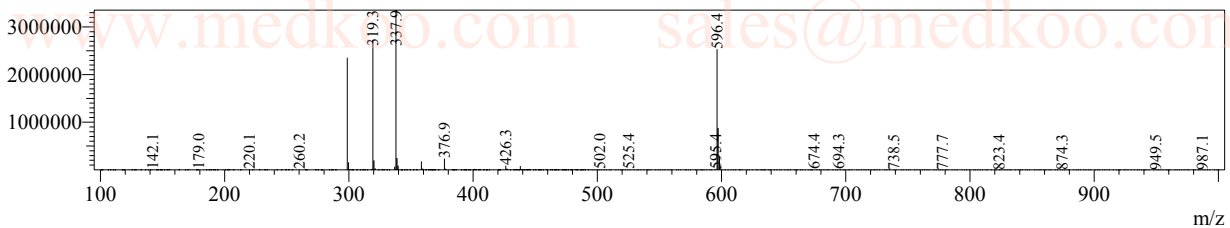
Peak#	Ret. Time	Area	Area %	Theoretical Plate#
1	1.837	26360	0.189	2481.303
2	2.384	22352	0.161	4307.623
3	3.152	19697	0.141	5190.531
4	11.228	13857567	99.509	35061.450
Total		13925976	100.000	

GLPG0187 MS Analysis

Peak#:1 R.Time:0.411(Scan#:28)
MassPeaks:529
Spectrum Mode:Averaged 0.392-0.442(26-30)
BG Mode:Calc Segment 1 - Event 2



Peak#:1 R.Time:0.449(Scan#:29)
MassPeaks:448
Spectrum Mode:Averaged 0.408-0.458(27-31)
BG Mode:Calc Segment 1 - Event 1



MedKoo Cat#: 205842
Name: GLPG0187
CAS#: 1320346-97-1
Lot #: A7T12K22
Chemical Formula: C₂₉H₃₇N₇O₅S
Exact Mass: 595.257
Molecular Weight: 595.71

MedKoo Biosciences
Product Quality Control Data
www.medkoo.com sales@medkoo.com