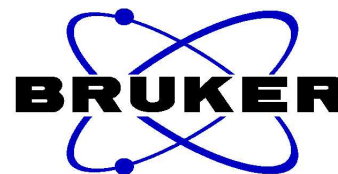
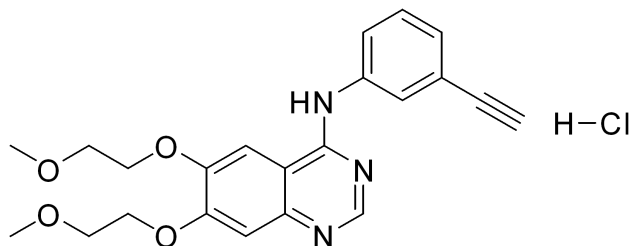


—15.181



# Erlotinib HCl, <sup>1</sup>H-NMR Analysis, solvent: DMSO-d6

11.669  
 8.841  
 8.503  
 7.899  
 7.825  
 7.804  
 7.504  
 7.484  
 7.465  
 7.427  
 7.412  
 7.393  
 4.414  
 4.404  
 4.392  
 4.325  
 4.315  
 4.303  
 4.286  
 3.787  
 3.779  
 3.364  
 3.360  
 2.512  
 2.508  
 2.503



MedKoo Cat#: 100300  
 Name: Erlotinib hydrochloride  
 CAS#: 183319-69-9 (HCl)  
 Lot# CRB70414  
 Chemical Formula: C<sub>22</sub>H<sub>24</sub>ClN<sub>3</sub>O<sub>4</sub>  
 Molecular Weight: 429.9

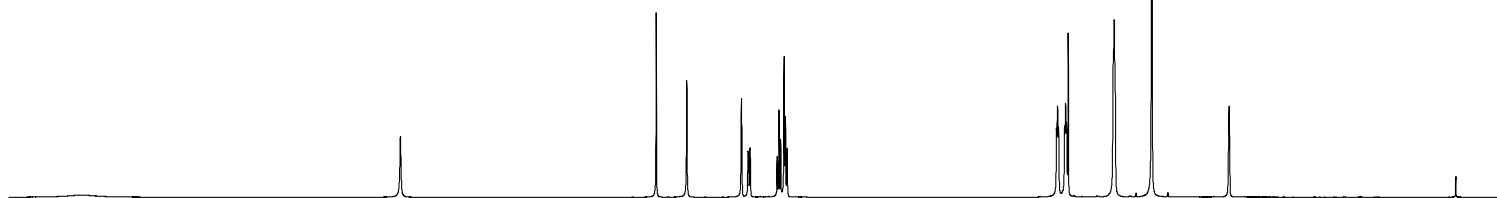
NAME Erlotinib

```

EXPNO           1
PROCNO          1
INSTRUM        spect
PROBHD         5 mm PASEI
PULPROG        1H/ zg30
TD             65536
SOLVENT        DMSO
NS             12
DS             0
SWH            8223.685 Hz
FIDRES         0.125483 Hz
AQ            3.9846387 sec
RG             101
DW            60.800 usec
DE             6.50 usec
TE            300.0 K
D1            1.00000000 sec
TD0            1
  
```

```

===== CHANNEL f1 =====
NUC1            1H
P1              7.00 usec
PL1            -2.00 dB
PL1W           12.73942947 W
SFO1           400.1324710 MHz
SI             32768
SF            400.1300000 MHz
WDW            EM
SSB            0
LB             0.30 Hz
GB             0
PC             1.00
  
```



15 14 13 12 11 10 9 8 7 6 5 4 3 2 1 ppm

0.67  
 0.99  
 1.00  
 1.01  
 0.98  
 1.02  
 3.03  
 2.06  
 2.98  
 4.04  
 6.08

www.medkoo.com sales@medkoo.com

www.medkoo.com

sales@medkoo.com



