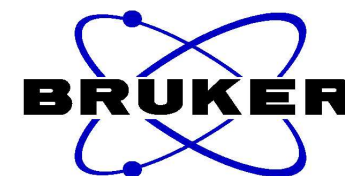


Erlotinib Free Base HNMR Analysis, solvent: CDCl3

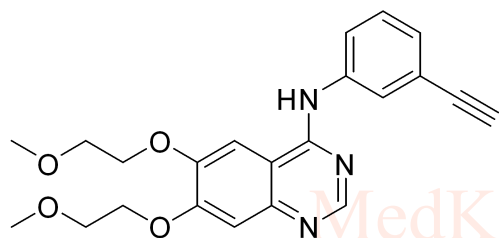
MedKoo Biosciences
Product Quality Control Data
www.medkoo.com sales@medkoo.com



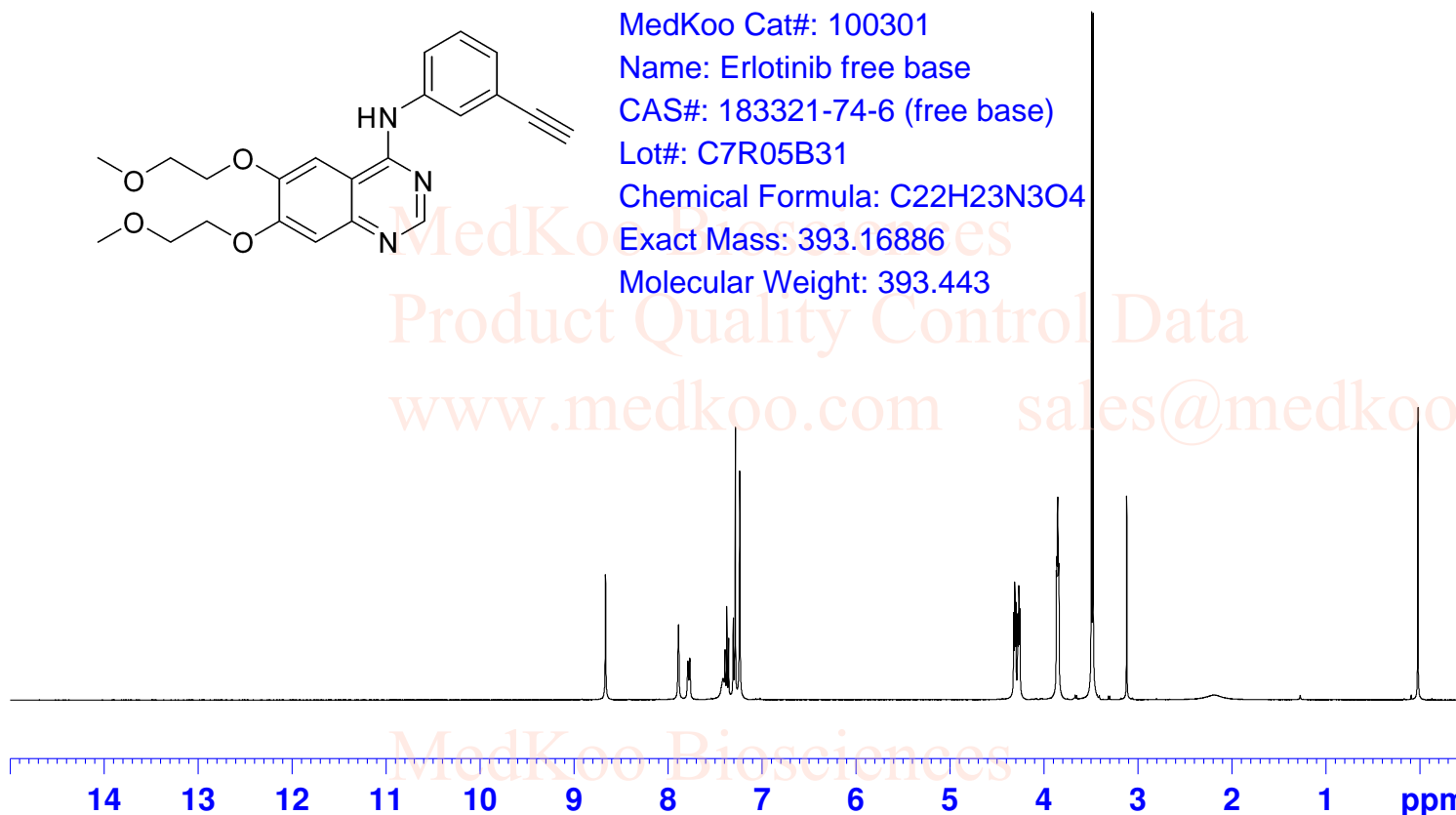
```

NAME      Erlotinib
EXPNO     1
PROCNO    1
INSTRUM   spect
PROBHD    5 mm PASEI 1H/
PULPROG   zg30
TD         65536
SOLVENT   CDCl3
NS         16
DS         0
SWH        8223.685 Hz
FIDRES     0.125483 Hz
AQ         3.9846387 sec
RG         287
DW         60.800 usec
DE         6.50 usec
TE         294.9 K
D1         1.0000000 sec
TD0        1

===== CHANNEL f1 =====
NUC1      1H
P1         7.00 usec
PL1        -2.00 dB
PL1W      12.73942947 W
SF01      400.1324710 MHz
SI         32768
SF         400.1300000 MHz
WDW        EM
SSB         0
LB         0.30 Hz
GB         0
PC         1.00
    
```



MedKoo Cat#: 100301
Name: Erlotinib free base
CAS#: 183321-74-6 (free base)
Lot#: C7R05B31
Chemical Formula: C₂₂H₂₃N₃O₄
Exact Mass: 393.16886
Molecular Weight: 393.443



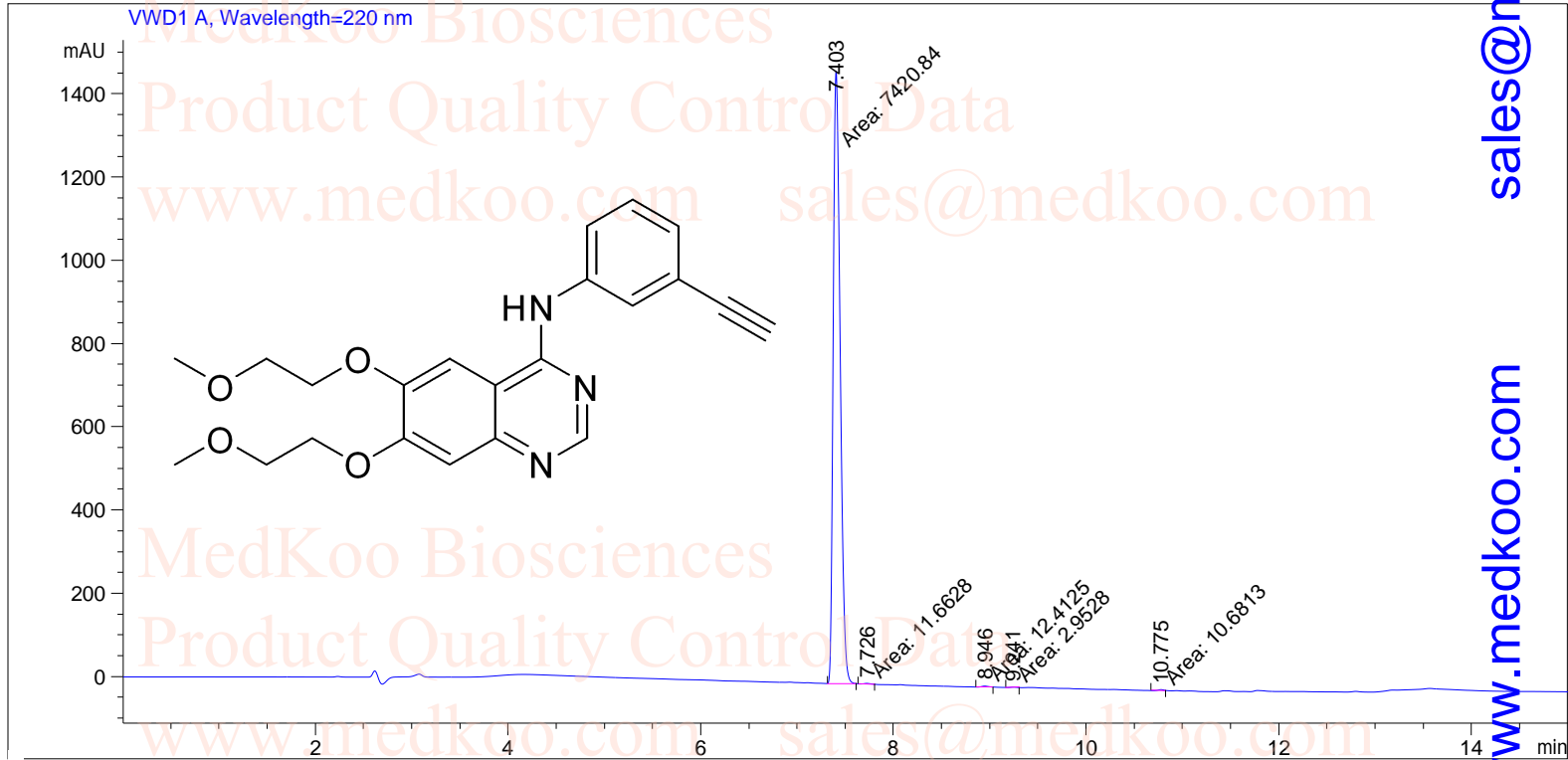
8.667
7.890
7.790
7.771
7.396
7.376
7.356
7.306
7.284
7.237
4.323
4.311
4.299
4.279
4.268
4.256
3.867
3.863
3.855
3.844
3.494
3.479
3.119
2.187

0.98
1.00
1.01
1.78
0.92
1.97
4.04
4.00
6.01
0.90
0.86

Erlotinib Free Base HPLC Analysis

```

=====
Acq. Operator   : System                      Seq. Line :    1
Acq. Instrument : LC1260                      Location  : Vial 21
Sample Name    : Erlotinib                    Inj       :    1
                                                    Inj Volume: 0 µl
Different Inj Volume from Sequence !      Actual Inj Volume : 3 µl
Acq. Method    : E:\DATA\YZJ\Data\10-90 AD 220 15MIN.M
Analysis Method : D:\PUBLIC\LSK-4.D\DA.M (5-95 6MIN.M)
=====
    
```



Area Percent Report

```

=====
Sorted By      :      Signal
Multiplier     :      1.0000
Dilution      :      1.0000
Use Multiplier & Dilution Factor with ISTDs
    
```

Signal 1: VWD1 A, Wavelength=220 nm

Peak #	RetTime [min]	Type	Width [min]	Area [mAU*s]	Height [mAU]	Area %
1	7.403	MM	0.0840	7420.83838	1472.96375	99.4944
2	7.726	MM	0.0931	11.66278	2.08685	0.1564
3	8.946	MM	0.0833	12.41246	2.48433	0.1664
4	9.241	MM	0.0585	2.95280	8.41630e-1	0.0396

```

=====
MedKoo Cat#: 100301
Name: Erlotinib free base
CAS#: 183321-74-6 (free base)
Lot#: C7R05B31
Chemical Formula: C22H23N3O4
Exact Mass: 393.16886
Molecular Weight: 393.443
    
```

