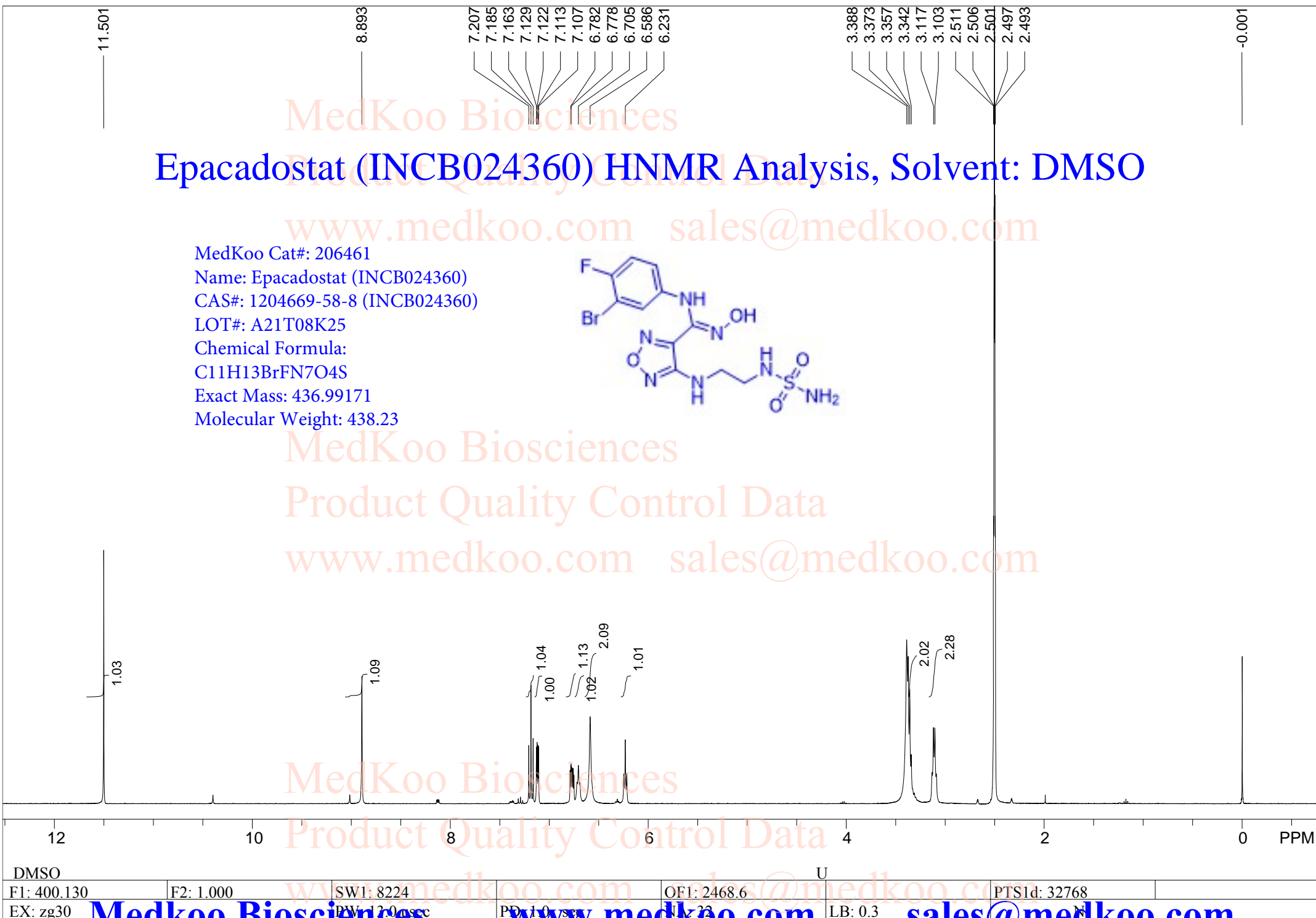
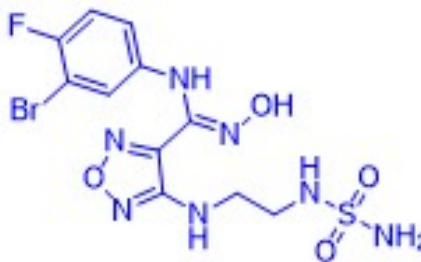


Epacadostat (INCB024360) HNMR Analysis, Solvent: DMSO

MedKoo Cat#: 206461
Name: Epacadostat (INCB024360)
CAS#: 1204669-58-8 (INCB024360)
LOT#: A21T08K25
Chemical Formula:
C₁₁H₁₃BrFN₇O₄S
Exact Mass: 436.99171
Molecular Weight: 438.23

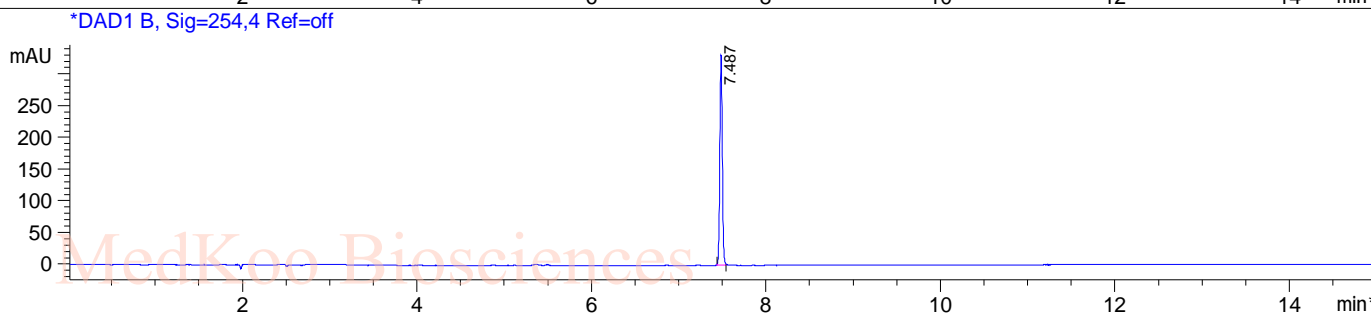
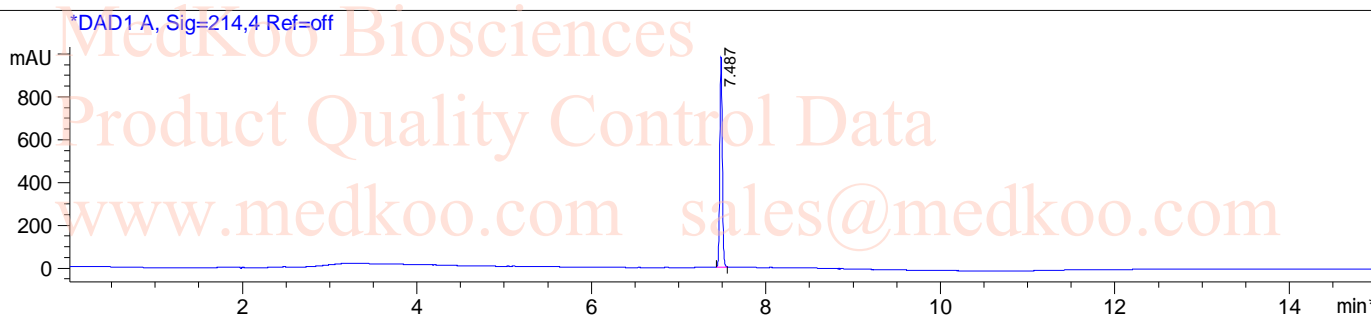


DMSO					U
F1: 400.130	F2: 1.000	SWH: 8224	OFI: 2468.6	PTSId: 32768	
EX: zg30		PW: 12.00 usec	NU: 23	LB: 0.3	

Epacadostat (INCB024360) HPLC Analysis

Sample Name : 1204669-58-8

Method Info : Mobile Phase : A:water(0.01%TFA) B:ACN(0.01%TFA)
Gradient:5%B increase to 95%B within 9min,95%B for 6min
Flow Rate :1ml/min
Column :Sunfire C18 150*4.6mm,3.5um
Column Temperature:45C
Detection:UV(214nm,4nm) and MS(ESI,POS Mode,110-1300amu)

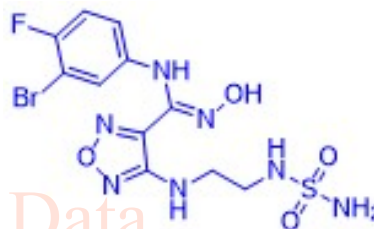


RetTim	Width	Area	Height	Area%
7.49	0.03	1959.57	979.99	100.00

Integration Results for DAD1 B, Sig=254,4 Ref=off

RetTim	Width	Area	Height	Area%
7.49	0.03	656.73	331.24	100.00

MedKoo Cat#: 206461
Name: Epacadostat (INCB024360)
CAS#: 1204669-58-8 (INCB024360)
LOT#: A21T08K25
Chemical Formula: C₁₁H₁₃BrFN₇O₄S
Exact Mass: 436.99171
Molecular Weight: 438.23



sales@medkoo.com

www.medkoo.com

Medkoo Biosciences

Epacadostat (INCB024360) LC/MS Analysis

Sample Name : 342688;/7:/:

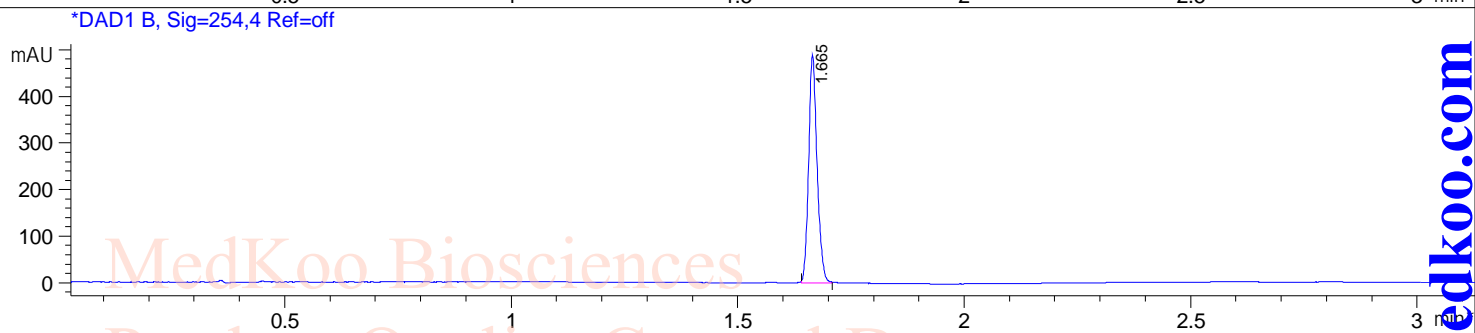
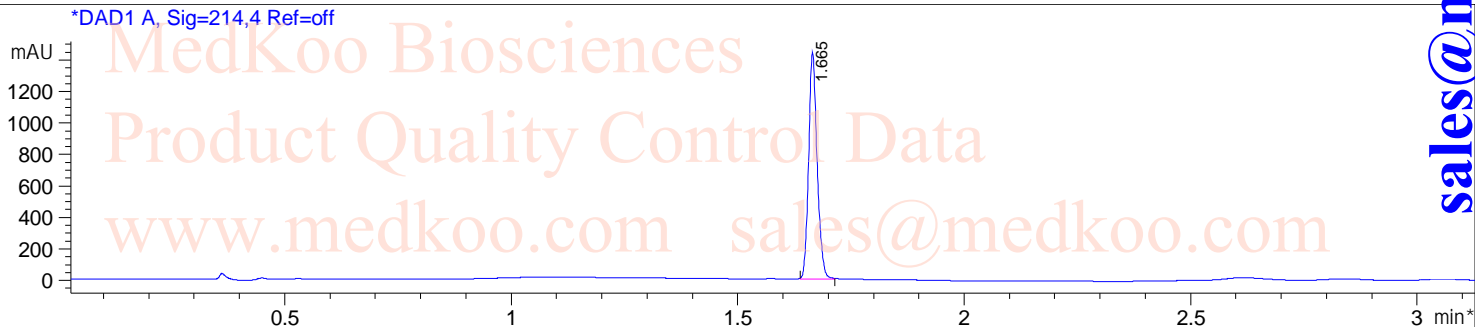
Method Info : Column:SunFire C18 (4.6x 50 mm,3.5 um)

Mobile phase: H2O(0.01%TFA) (A) / ACN(0.01%TFA) (B)

Elution program: Gradient from 10 to95% of B in 1.4 min at 2ml/min

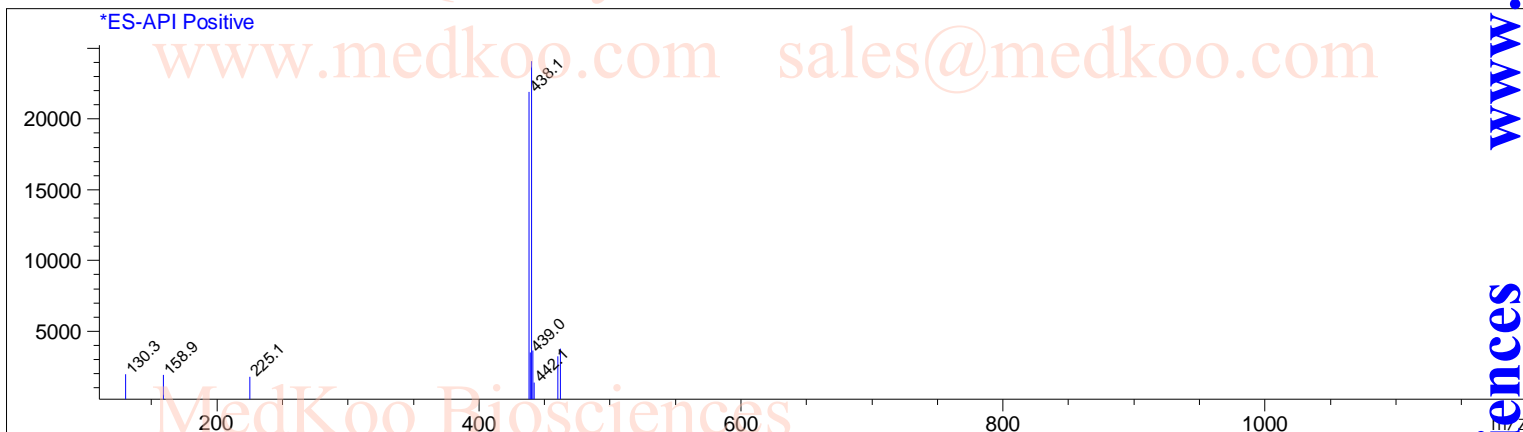
Temperature: 50 °C

Detection: UV (214 , 4 nm) and MS (ESI, Pos mode ,110 to 1000 amu)



Ret. Time: 1.67

<<<< POSITIVE SPECTRA >>>>



MedKoo Cat#: 206461

Name: Epacadostat (INCB024360)

CAS#: 1204669-58-8 (INCB024360)

LOT#: A21T08K25

Chemical Formula: C₁₁H₁₃BrFN₇O₄S

Exact Mass: 436.99171

Molecular Weight: 438.23

