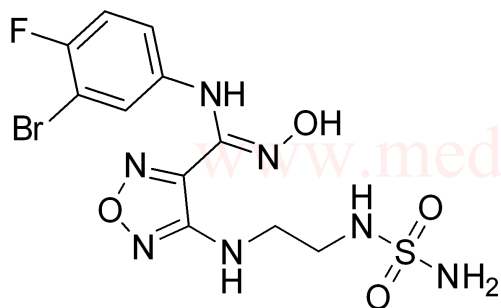


# Epacadostat (INCB024360) HNMR Analysis, Solvent: DMSO



MedKoo Cat#: 206461

Name: Epacadostat (INCB024360)

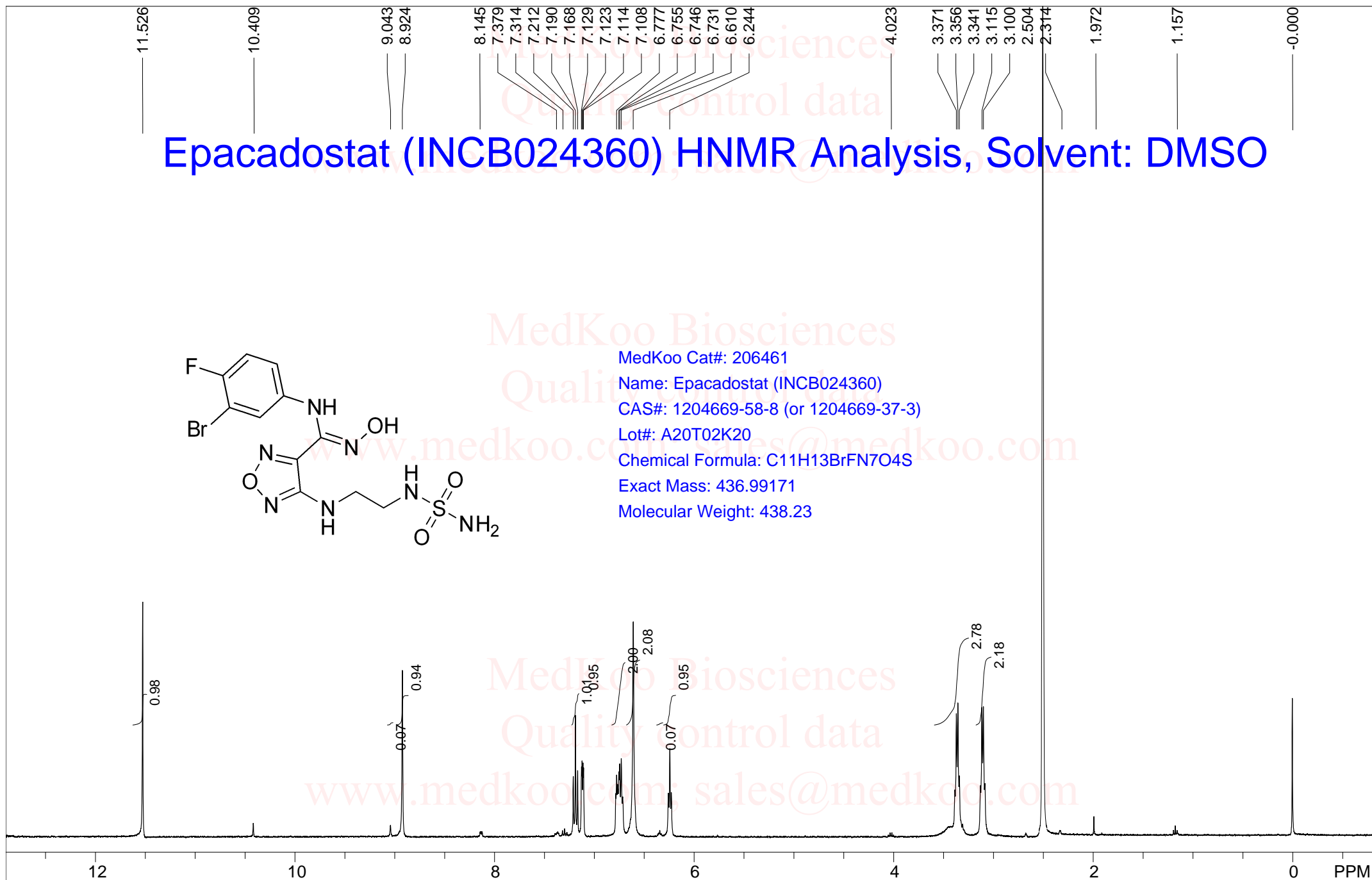
CAS#: 1204669-58-8 (or 1204669-37-3)

Lot#: A20T02K20

Chemical Formula: C<sub>11</sub>H<sub>13</sub>BrFN<sub>7</sub>O<sub>4</sub>S

Exact Mass: 436.99171

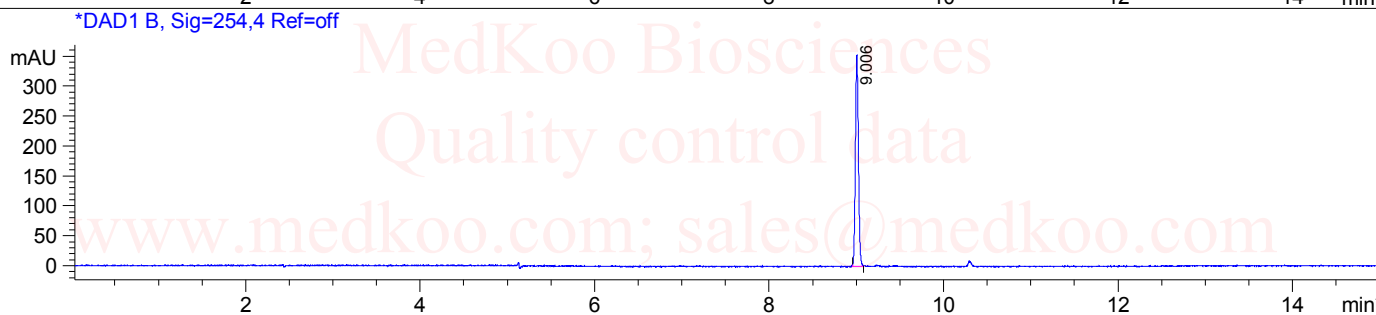
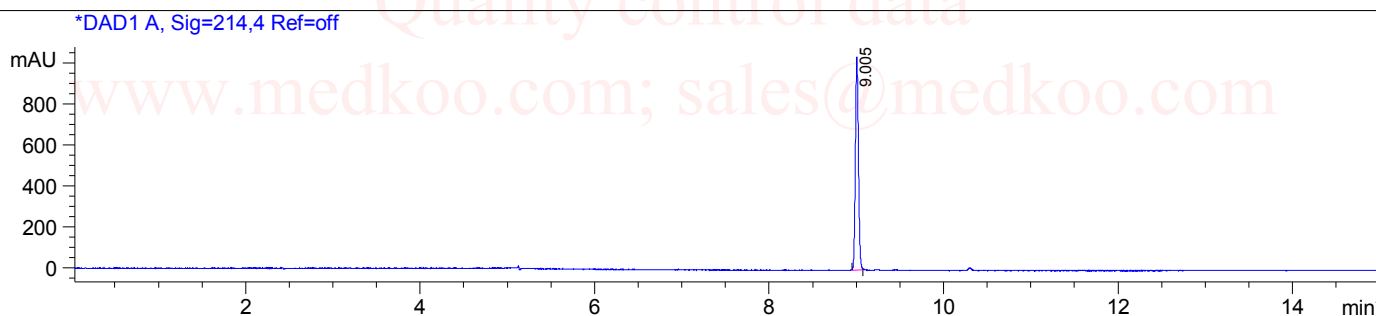
Molecular Weight: 438.23



F1: 400.130	F2: 1.000	SW1: 8224	OF1: 2470.4	PTS1d: 65536
EX: zg30	www.medkoo.com	www.medkoo.com	LB: 0.3	sales@medkoo.com

# Epacadostat (INCB024360) HPLC Analysis

Sample Name : 342688;/7://  
Acq. Method : D:\METHODS\2-POS-15MIN.M  
Analysis Method : D:\METHODS\2-POS-15MIN.M  
Sample Info : Easy-Access Method: '2-POS-15MIN'  
Method Info : Mobile Phase: A: water (10mM Ammonium hydrogen carbonate) B: ACN  
Gradient: 0min 5%B,3min 5%B,10min 95%B,15min 95% B  
Flow Rate: 1ml/min  
Column: XBridge C18,4.6\*150mm,3.5um  
Oven Temperature: 45 C  
MASS Range:110-1000

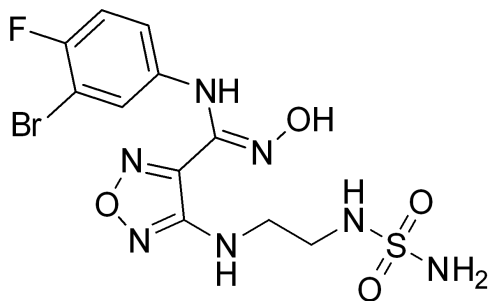


Integration Results for DAD1 A, Sig=214,4 Ref=off

RetTim	Width	Area	Height	Area%
9.01	0.04	2531.27	1038.71	100.00

Integration Results for DAD1 B, Sig=254,4 Ref=off

RetTim	Width	Area	Height	Area%
9.01	0.04	855.98	352.45	100.00



MedKoo Cat#: 206461

Name: Epacadostat (INCB024360)

CAS#: 1204669-58-8 (or 1204669-37-3)

Lot#: A20T02K20

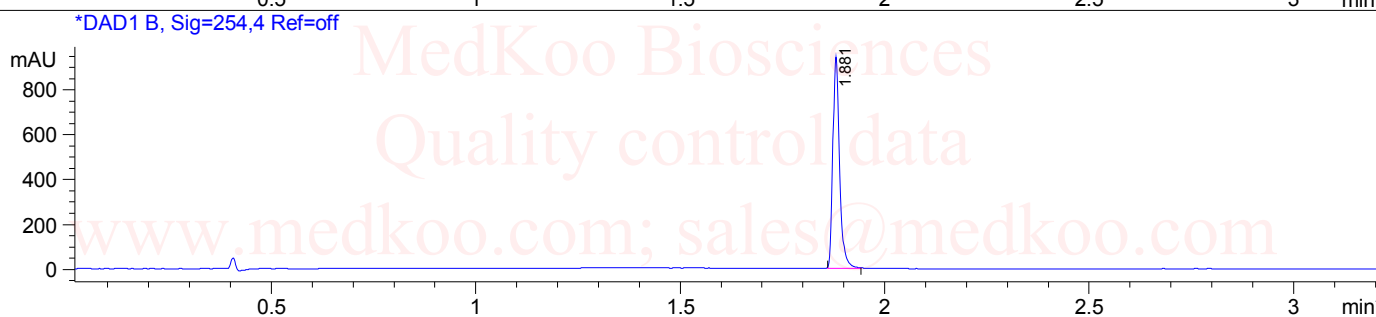
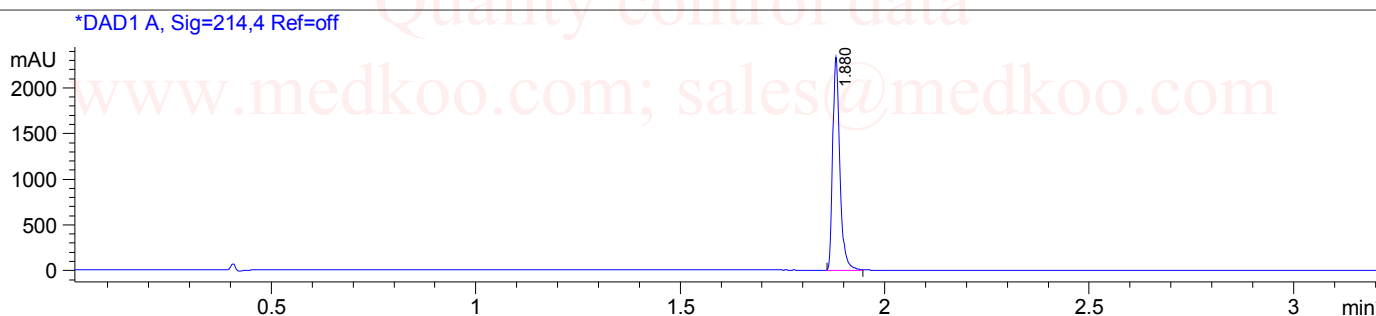
Chemical Formula: C<sub>11</sub>H<sub>13</sub>BrFN<sub>7</sub>O<sub>4</sub>S

Exact Mass: 436.99171

Molecular Weight: 438.23

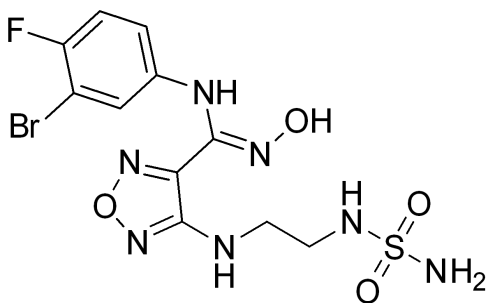
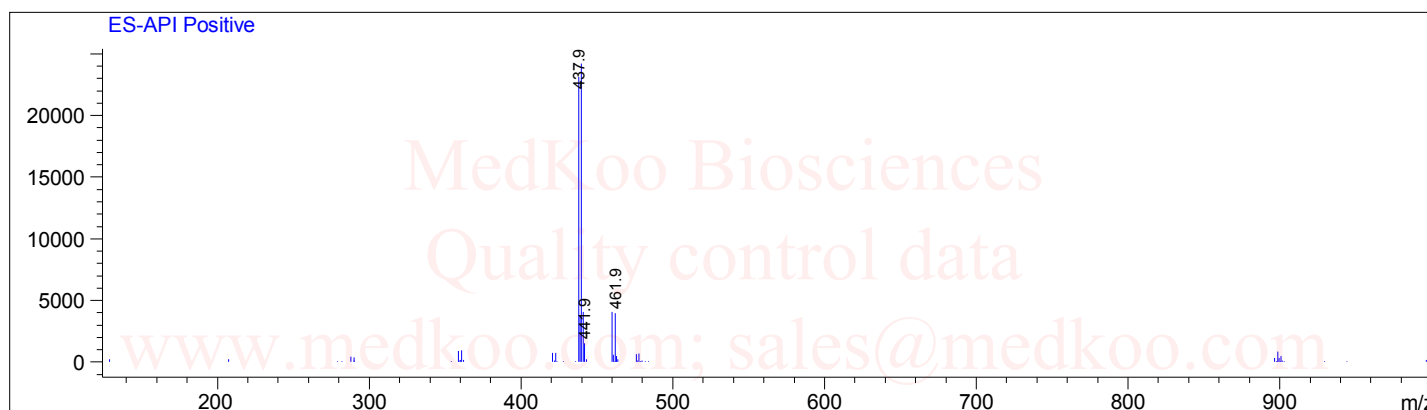
# Epacadostat (INCB024360) LC/MS Analysis

Sample Name : 1204669-58-8  
Acq. Method : D:\METHODS\2-POS-MON-1.M  
Analysis Method : D:\METHODS\2-POS-MON-1.M  
Sample Info : Easy-Access Method: '2-POS-MON-1'  
Method Info : Column: XBridge (4.6x 50 mm, 3.5um)  
Mobile phase: H2O(10 mmol NH4HCO3 ) (A) / ACN(B)  
Elution program: Gradient from 10 to 95% of B in 1.4min at 1.8ml/min  
Temperature: 50 °C  
Detection: UV (214 , 4 nm) and MS (ESI, Pos mode , 103 to 1000 amu)



Ret. Time: 1.89

<<<< POSITIVE SPECTRA >>>>



MedKoo Cat#: 206461

Name: Epacadostat (INCB024360)

CAS#: 1204669-58-8 (or 1204669-37-3)

Lot#: A20T02K20

Chemical Formula: C<sub>11</sub>H<sub>13</sub>BrFN<sub>7</sub>O<sub>4</sub>S

Exact Mass: 436.99171

Molecular Weight: 438.23

sales@medkoo.com

www.medkoo.com

MedKoo Biosciences