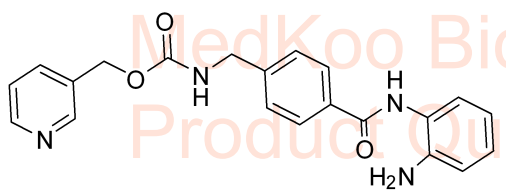
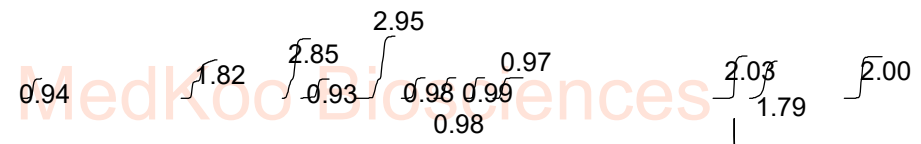
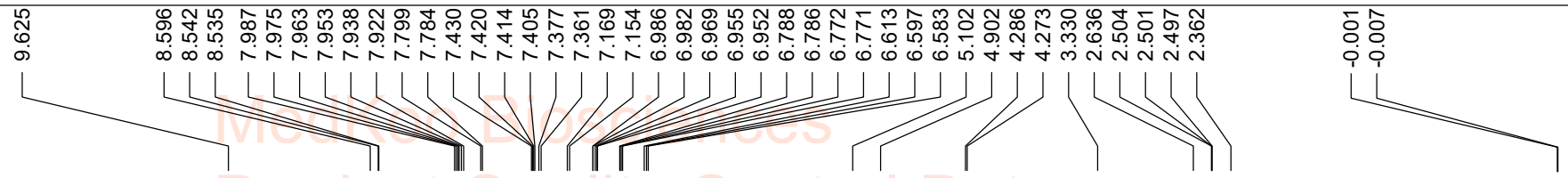


Entinostat HNMR Analysis, Solvent: DMSO



MedKoo Cat#: 201266
 Name: Entinostat
 CAS#: 209783-80-2
 Chemical Formula: C₂₁H₂₀N₄O₃
 Lot#: A21T05K25
 Exact Mass: 376.15354
 Molecular Weight: 376.41

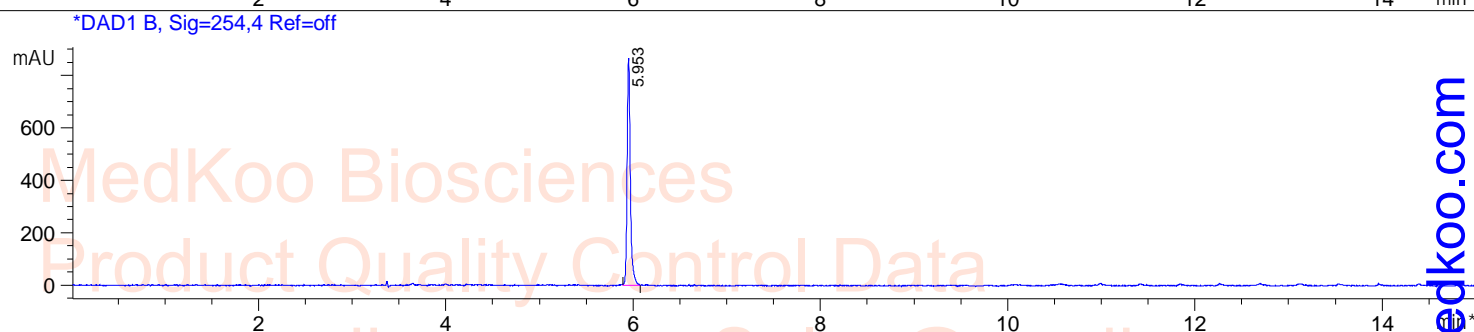
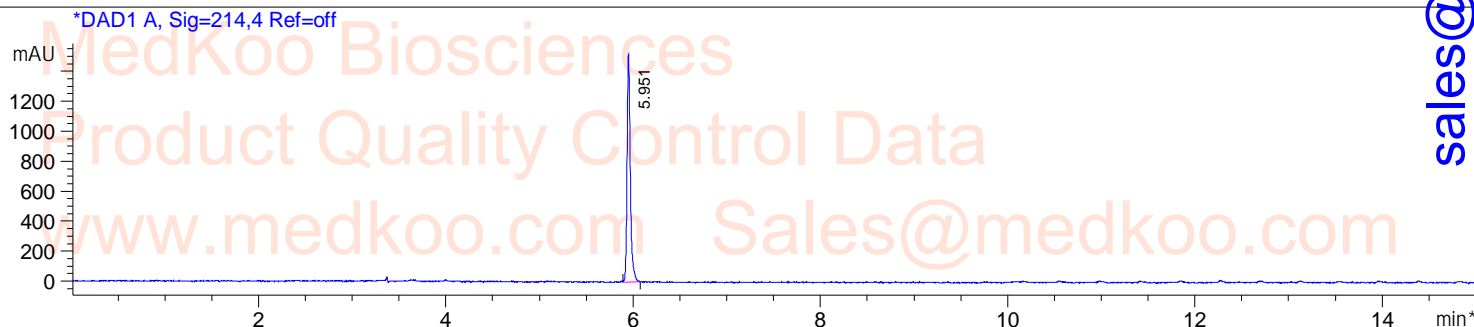


12 10 8 6 4 2 0 PPM

DMSO,							
F1: 500.133	F2: 1.000	SW1: 10331	PD: 1.0 sec	OF1: 3085.3	NA: 32	PTS1d: 32768	
EX: zg30		PW: 13.7 usec		LB: 0.0			Nuts - \$pdata

Entinostat HPLC Analysis

Sample Name : 209783-80-2
Method Info : Mobile Phase: A: water(10mM Ammonium hydrogen carbonate) B: ACN
Gradient: 5%-95% B in 8 min,95%B for 7min.
Flow Rate: 1.0ml/min
Column: XBridge C18,4.6*150mm,3.5um
Oven Temperature: 40 C
Mass Range: 110-900 UV: 214nm;254nm

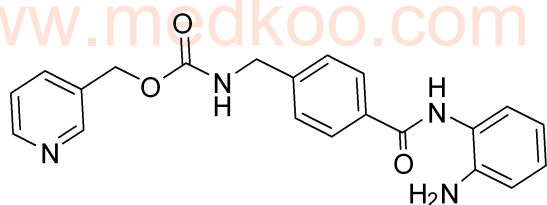


Integration Results for DAD1 A, Sig=214,4 Ref=off

RetTim	Width	Area	Height	Area%
5.95	0.03	3651.64	1518.76	100.00

Integration Results for DAD1 B, Sig=254,4 Ref=off

RetTim	Width	Area	Height	Area%
5.95	0.04	2062.96	865.42	100.00



MedKoo Cat#: 201266

Name: Entinostat

CAS#: 209783-80-2

Chemical Formula: C₂₁H₂₀N₄O₃

Lot#: A21T05K25

Exact Mass: 376.15354

Molecular Weight: 376.41

Entinostat LC/MS Analysis

Sample Name : 209783-80-2

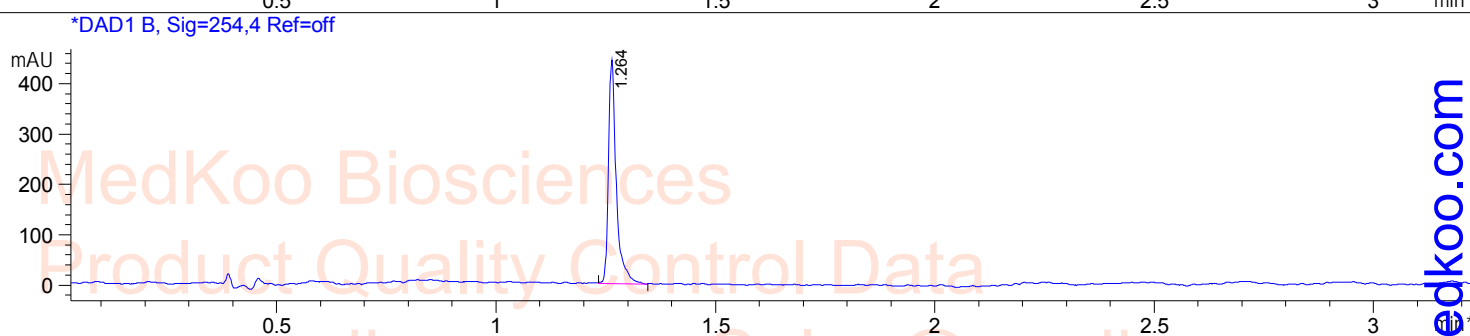
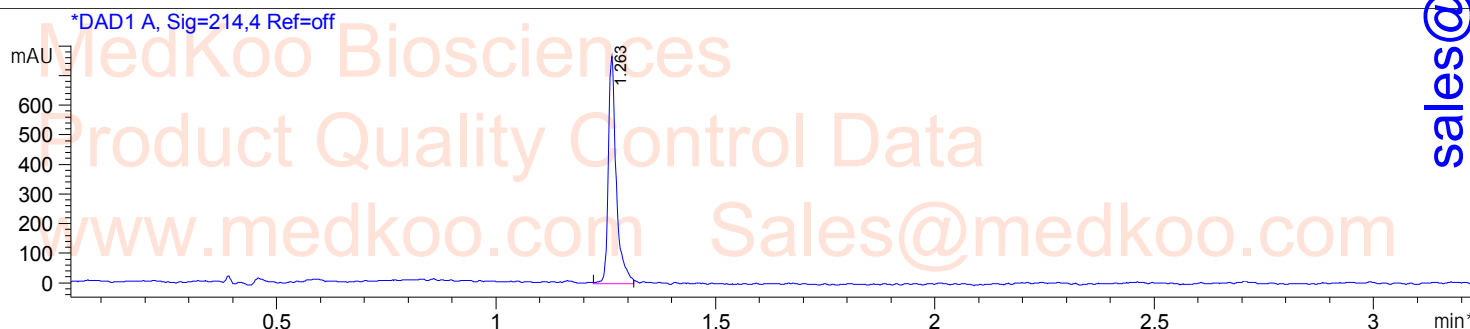
Method Info : Column:Xbridge C18(2) (4.6x 50 mm, 3.5um)

Mobile phase: H2O(10 mmol NH4HCO3) (A) / ACN(B)

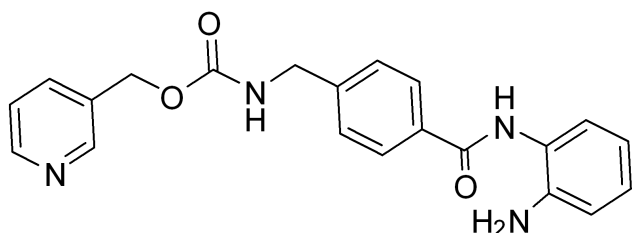
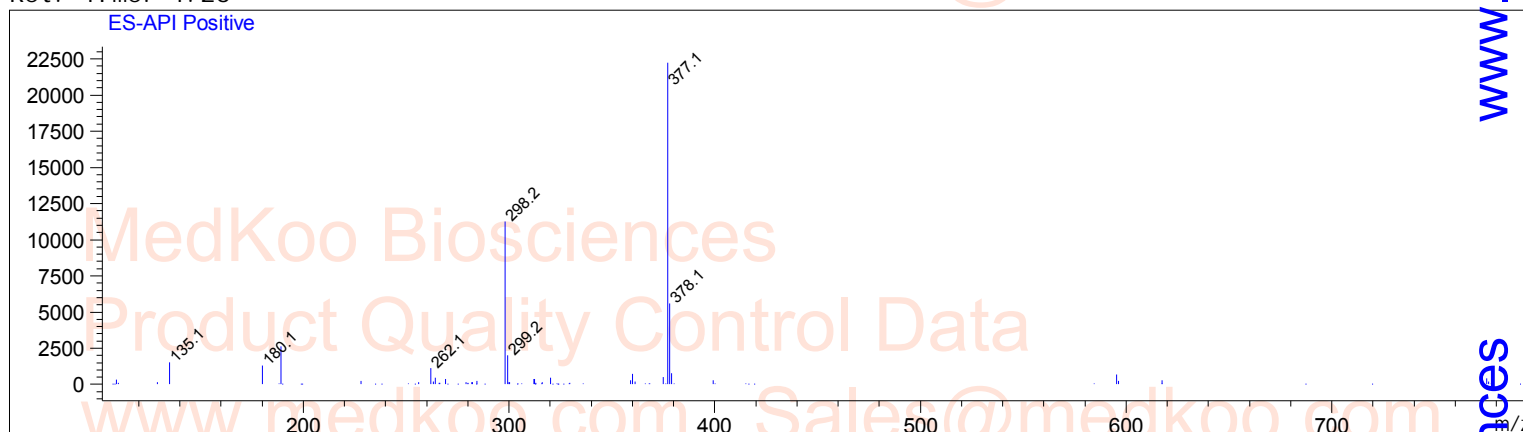
Elution program: Gradient from 10 to 95% of B in 1.5min at 1.8ml/min

Temperature: 50 °C

Detection: UV (214 , 4 nm) and MS (ESI, Pos mode ,103 to 800 amu)



Ret. Time: 1.26 <<<< POSITIVE SPECTRA >>>>



MedKoo Cat#: 201266

Name: Entinostat

CAS#: 209783-80-2

Chemical Formula: C₂₁H₂₀N₄O₃

Lot#: A21T05K25

Exact Mass: 376.15354

Molecular Weight: 376.41

sales@medkoo.com

www.medkoo.com

MedKoo Biosciences