

7.508
7.493
7.487
7.472
7.456
7.450
7.435
7.341
7.316
7.270
7.262
7.250
7.236
7.131
7.110
7.091
7.078
7.072
7.055
7.049
7.035
7.029
7.014
7.008
6.416
6.392
6.199

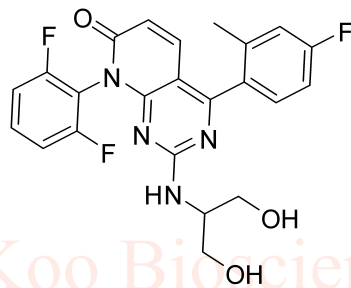
3.732
3.569

2.257
2.192

0.015
0.007
-0.001
-0.009
-0.026

Dilmapimod HNMR Analysis, Solvent: CDCl3

www.medkoo.com sales@medkoo.com



MedKoo Cat#: 205999
Name: Dilmapimod
CAS#: 444606-18-2 (free base)
Lot#: T20D03P06
Chemical Formula: C23H19F3N4O3
Exact Mass: 456.14093
Molecular Weight: 456.42

www.medkoo.com sales@medkoo.com

www.medkoo.com sales@medkoo.com

www.medkoo.com sales@medkoo.com

www.medkoo.com sales@medkoo.com

4.16
1.11
1.08
1.00

1.03
0.84

5.17

3.38

10

8

6

4

2

0

PPM

NMRB003, CDCl3.

F1: 400.232

F2: 1.000

SW1: 8224

OF1: 2464.9

PTS1d: 32768

EX: zg30

PROB: zgpg30

PD: 10.00

RG: 327.68

LB: 0.0

Nuts - \$pdata

MedKoo Biosciences

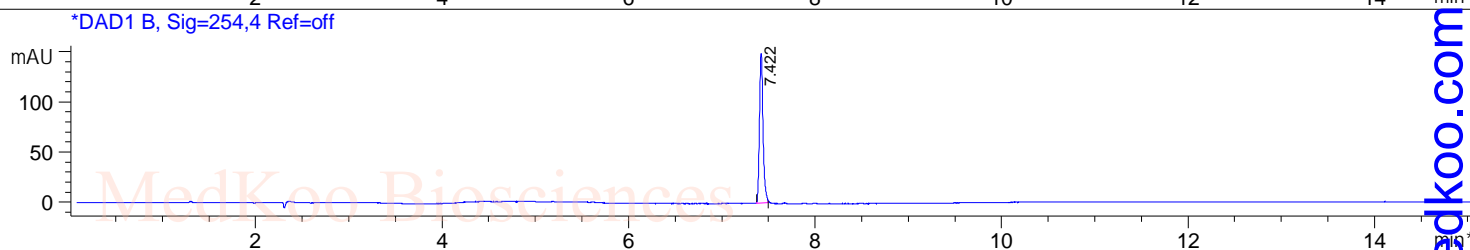
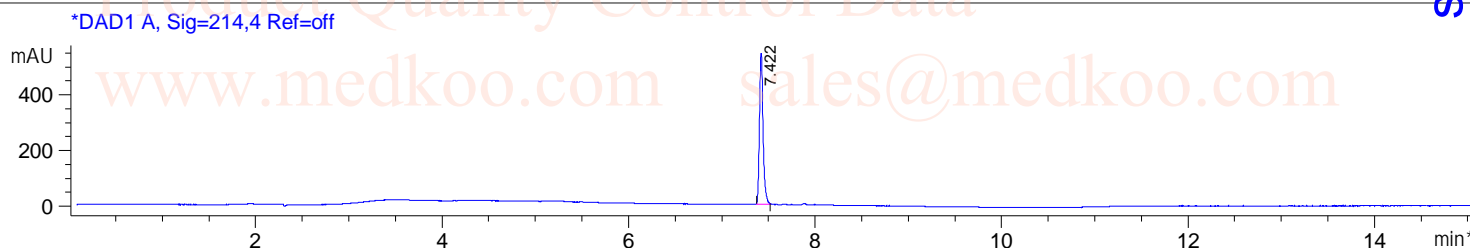
www.medkoo.com

sales@medkoo.com

Dilmapimod HPLC Analysis Report

Sample Name : Dilmapimod
Acq. Operator :
Spec. Reported : MS Integration
Acq. Method : D:\METHODS\1-POS-15MIN.M
Analysis Method : D:\METHODS\1-POS-15MIN.M
Sample Info : Easy-Access Method: '1-POS-15MIN.M'
Method Info : Mobile Phase: A: water(0.01%TFA) B: ACN(0.01%TFA)
Gradient: 5%B increase to 95%B within 8.0 min, 95%B for 7.0 min.
Flow Rate: 1.0ml/min
Column: Sunfire C18, 4.6*150mm, 3.5um
Column Temperature: 40 C
Detection: UV(214,4nm) and MS(ESI,Pos mode,110 to 1500 amu)

Tgt Mass(EZX) :
Location : P2-D-02
Inj : 1
Inj Volume : 1 ul

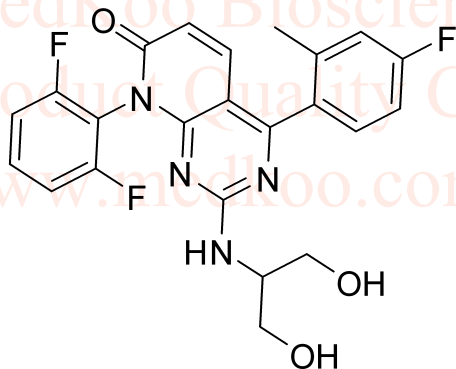


Integration Results for DAD1 A, Sig=214,4 Ref=off

RetTim	Width	Area	Height	Area%
7.42	0.04	1458.20	543.64	100.00

Integration Results for DAD1 B, Sig=254,4 Ref=off

RetTim	Width	Area	Height	Area%
7.42	0.04	396.17	149.38	100.00

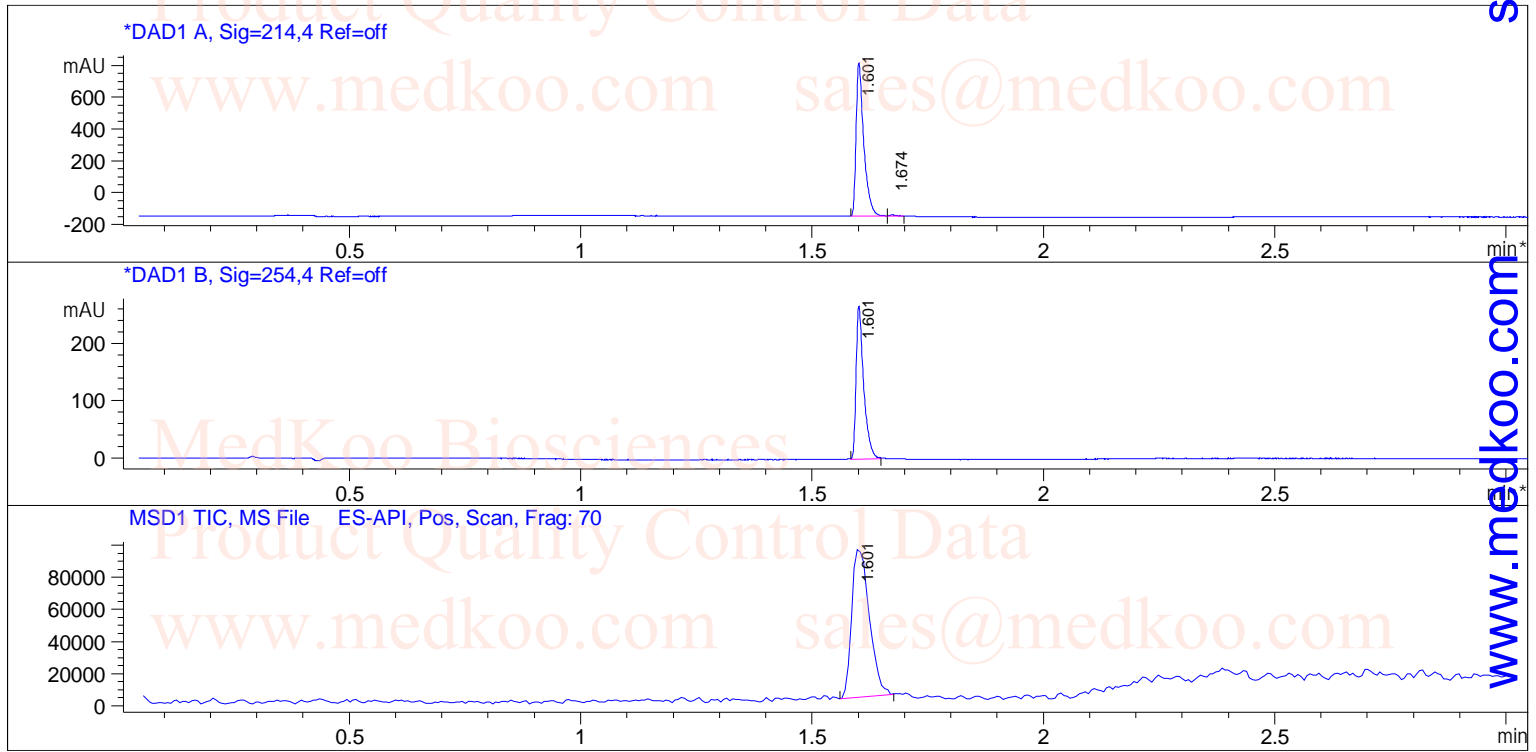


MedKoo Cat#: 205999
Name: Dilmapimod
CAS#: 444606-18-2 (free base)
Lot#: T20D03P06
Chemical Formula: C₂₃H₁₉F₃N₄O₃
Exact Mass: 456.14093
Molecular Weight: 456.42

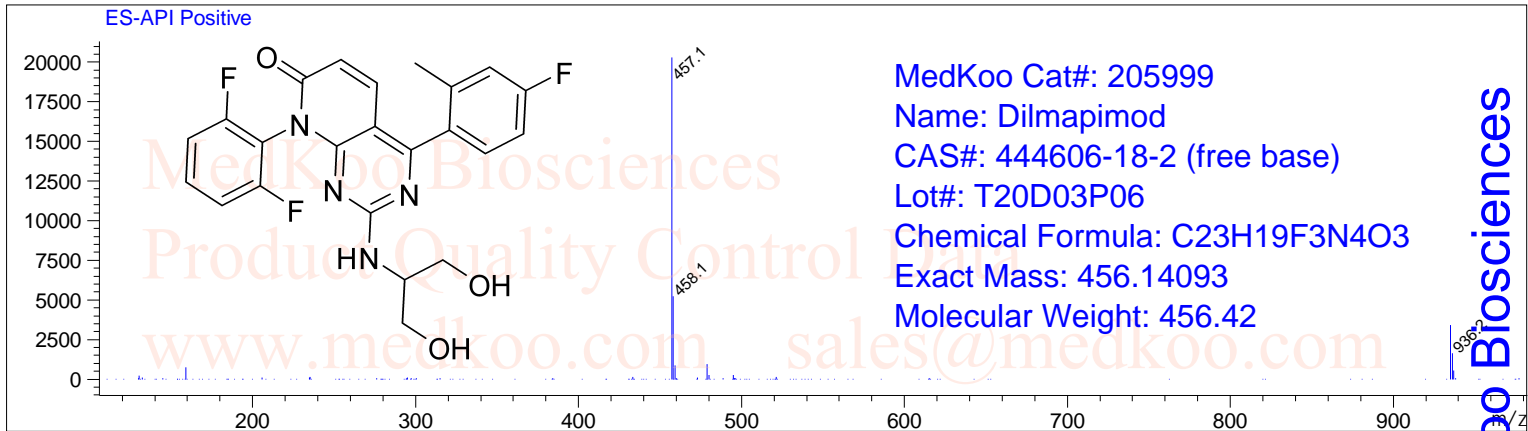
Dilmapimod LC/MS Analysis Report

Sample Name : Dilmapimod
Acq. Operator :
Spec. Reported : MS Integration
Acq. Method : D:\METHODS\1-POS-3MIN.M
Analysis Method : D:\METHODS\1-POS-3MIN.M
Sample Info : Easy-Access Method: '1-POS-3MIN.M'
Method Info : Mobile Phase: A: water(0.01%TFA) B: ACN(0.01%TFA)
Gradient: 5%B increase to 95%B within 1.3 min, 95%B for 1.7 min.
Flow Rate: 2.0ml/min
Column: Sunfire C18, 4.6*50mm, 3.5um
Column Temperature: 50 C
Detection: UV(214,4nm) and MS(ESI, Pos mode, 110 to 1000 amu)

Tgt Mass(EZX) :
Location : P2-D-01
Inj : 1
Inj Volume : 1 ul



Ret. Time: 1.60 <<<< POSITIVE SPECTRA >>>>



sales@medkoo.com
www.medkoo.com
MedKoo Biosciences