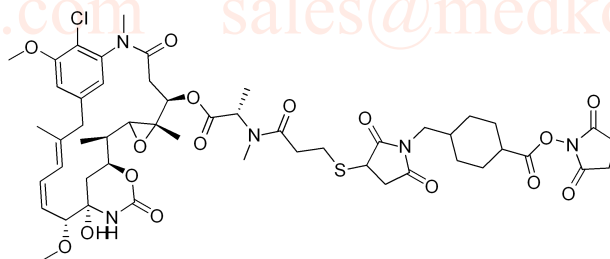


DM1-SMCC HNMR Analysis, Solvent = CDCl₃

MedKoo Biosciences

Product Quality Control Data

www.medkoo.com sales@medkoo.com



MedKoo Cat#: 407202
Name: DM1-SMCC
CAS#: 1228105-51-8
Lot#: T7K10C19
Chemical Formula: C₅₁H₆₆ClN₅O₁₆S
Exact Mass: 1071.39138
Molecular Weight: 1072.618

MedKoo Biosciences

Product Quality Control Data

www.medkoo.com sales@medkoo.com

MedKoo Biosciences

Product Quality Control Data

www.medkoo.com sales@medkoo.com

7.198
6.755
6.628
6.563
6.179
5.578
5.327
4.715
4.685
3.919
3.672
3.610
3.417
3.279
3.150
3.006
2.944
2.782
2.538
2.280
2.094
1.572
1.466
1.185
0.988
0.731

5000C

0

1.00
0.94
0.93
0.96
0.92
0.99
0.99
0.91
3.18
1.81
1.02
3.99
4.80
4.56
8.38
3.16
1.00
3.35
4.88
3.11
4.63
7.72
2.19
2.91

10.0

5.0

0.0

ppm (t1)

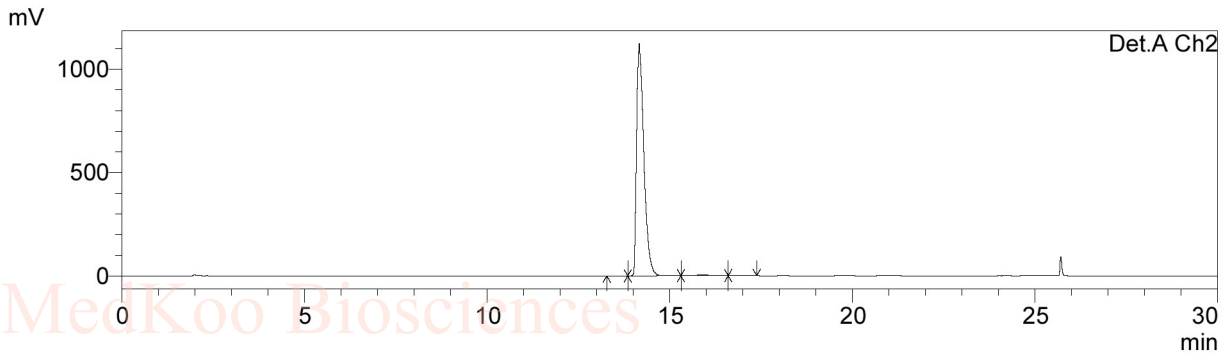
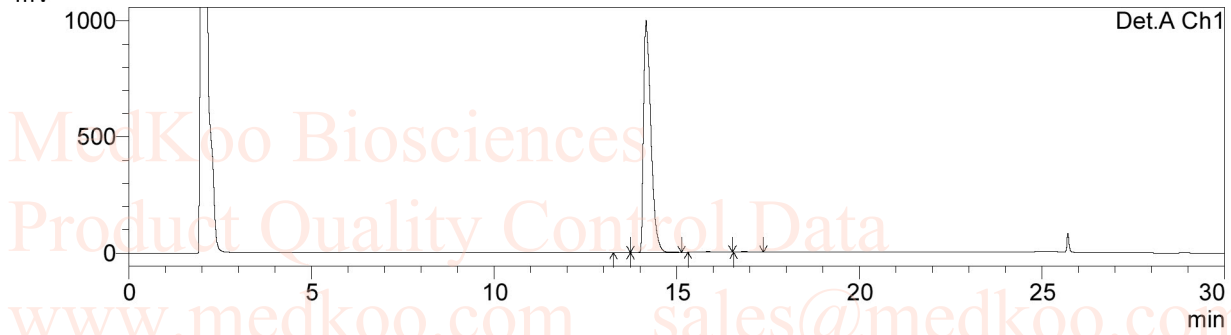
MedKoo Biosciences

www.medkoo.com

sales@medkoo.com

DM1-SMCC HPLC Analysis

Column : Inertil ODS-3, 5um 4.6*150mm
 Mobile phase : Solvent A: H2O(0.05%H3PO4) Solvent B:ACN(0.05%H3PO4)
 Temperature : 40 °C
 Flow rate : 1mL/min
 Run time : 3min gradient(50%B), 15min gradient (50%-95%B),5 min(95%B),then 7min @(50%B)
 Detector : UV
 Wavelength : 220/254 nm



1 Det.A Ch1/220nm
 2 Det.A Ch2/254nm

PeakTable

Detector A Ch1 220nm

Peak#	Ret. Time	Area	Area %	Theoretical Plate
1	13.556	5528	0.039	26556.347
2	14.158	14035850	98.954	23600.227
3	15.910	90579	0.639	4878.135
4	16.836	52299	0.369	16877.621
Total		14184255	100.000	

PeakTable

Detector A Ch2 254nm

Peak#	Ret. Time	Area	Area %	Theoretical Plate
1	13.538	8143	0.052	21514.537
2	14.158	15559248	99.109	24139.355
3	15.897	112185	0.715	4553.286
4	16.814	19551	0.125	18911.813
Total		15699127	100.000	

MedKoo Cat#: 407202

Name: DM1-SMCC

CAS#: 1228105-51-8

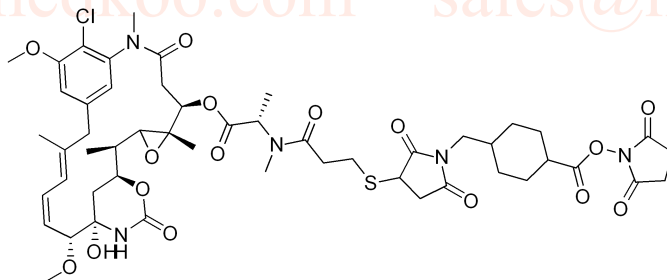
Lot#: T7K10C19

Chemical Formula:

C51H66ClN5O16S

Exact Mass: 1071.39138

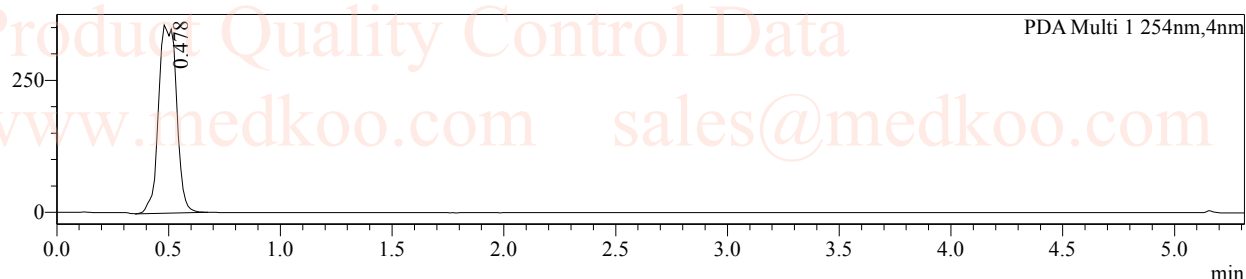
Molecular Weight: 1072.618



DM1-SMCC LC/MS Analysis

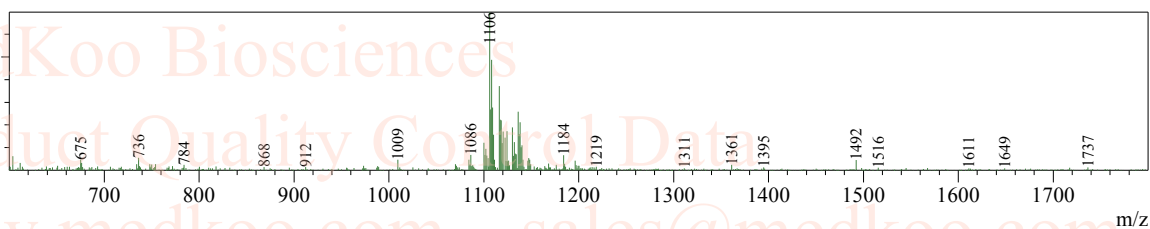
LC-MS condition
Column : Chromolith SpeedROD ,RP-18e,50*4.6mm LCMS-002
Mobile Phase : A: H2O(0.05%FA)
B: CH3CN
Temperature : 35jæ
Flow rate : 2.5mL/min
Run time : 0.6min@15%B,3.2min gradient(15-95% B), then0.5min@95% B,then0.7min@15% B
Injection volume : 5 uL
Detector : UV 220/254nm
Mass range : 100-1000
Scan : Postive/Negative
User Name : MAB
Data Filename : 1228105-51-8.lcd

mAU

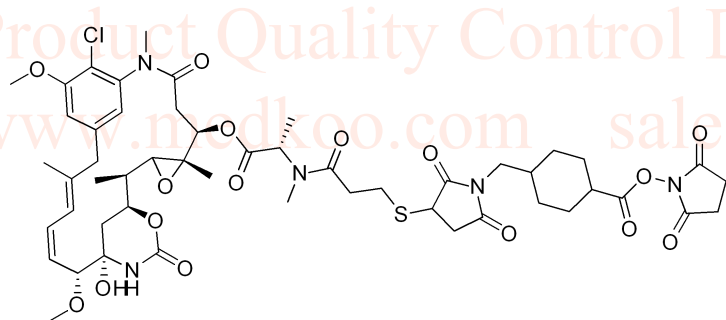
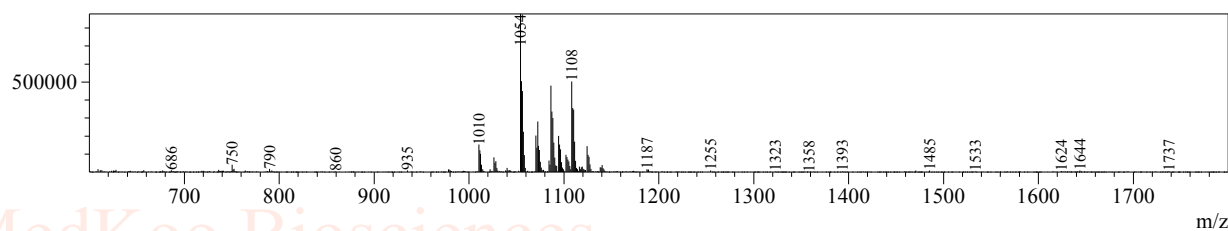


MS Spectrum

Peak#:1 R.Time:0.351(Scan#:32)
MassPeaks:639
Spectrum Mode:Averaged 0.325-0.375(30-34)
BG Mode:Calc Segment 1 - Event 2



Peak#:1 R.Time:0.381(Scan#:33)
MassPeaks:741
Spectrum Mode:Averaged 0.342-0.392(31-35)
BG Mode:Calc Segment 1 - Event 1



MedKoo Cat#: 407202

Name: DM1-SMCC

CAS#: 1228105-51-8

Lot#: T7K10C19

Chemical Formula: C51H66ClN5O16S

Exact Mass: 1071.39138

Molecular Weight: 1072.618