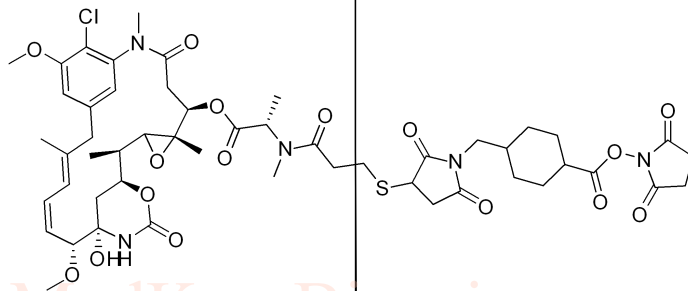


6.432 6.422 6.394 6.224 5.683 5.661 5.645 5.623 5.408 5.395 5.391 5.378 4.798 4.791 4.787 4.768 4.763 4.278 3.990 3.755 3.742 3.733 3.699 3.691 3.685 3.677 3.668 3.654 3.508 3.485 3.365 3.365 3.352 3.347 3.273 3.257 3.241 3.227 3.210 3.205 3.133 3.128 3.117 3.105 3.101 3.080 3.076 3.058 3.053 3.043 3.029 3.018 3.007 2.851 2.835 2.803 2.660 2.644 2.635 2.614 2.607 2.600 2.588 2.578 2.569 2.424 2.412 2.383 2.375 2.365 2.199 2.164 2.131 2.012 1.788

# DM1-SMCC HNMR Analysis, Solvent = CDCl3

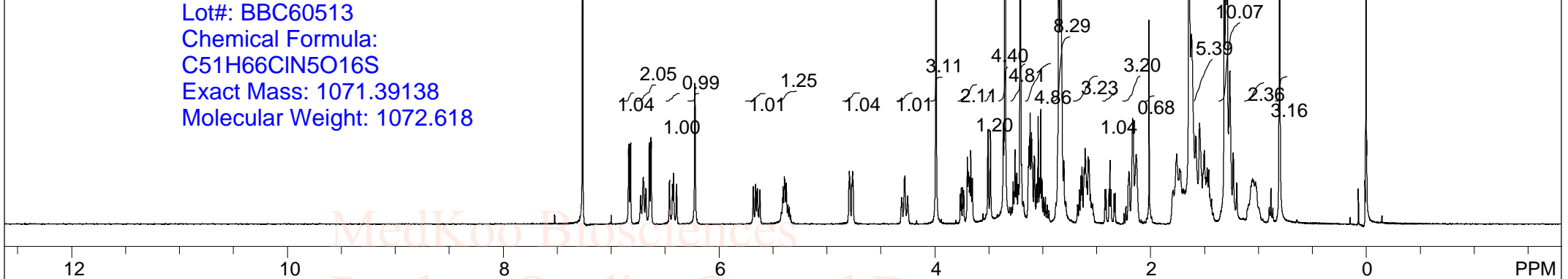
www.medkoo.com sales@medkoo.com



MedKoo Biosciences  
Product Quality Control Data

MedKoo Cat#: 407202  
Name: DM1-SMCC  
CAS#: 1228105-51-8  
Lot#: BBC60513  
Chemical Formula:  
C<sub>51</sub>H<sub>66</sub>ClN<sub>5</sub>O<sub>16</sub>S  
Exact Mass: 1071.39138  
Molecular Weight: 1072.618

www.medkoo.com sales@medkoo.com



spect, CDCl3,							
F1: 400.132	F2: 1.000	SW1: 8013	PD: 1.0 sec	OF1: 2463.3	LB: 0.0	PTS1d: 65536	
EX: zg30		PW: 14.8 usec		NA: 64			Nuts - \$pdata



# DM1-SMCC MS Analysis

Sample Name : DM1  
Acq. Operator : 8

Tgt Mass(EZX) :

