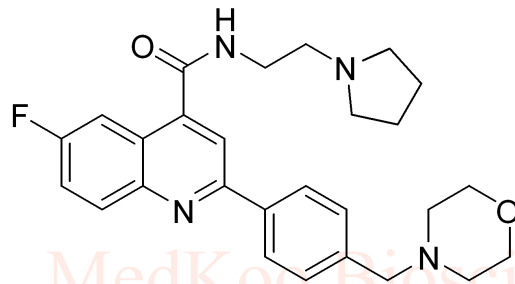


8.192
8.178
8.169
8.155
8.095
8.075
7.944
7.928
7.921
7.538
7.531
7.507
7.486
7.262
6.807

3.739
3.727
3.716
3.692
3.678
3.663
3.650
3.580
2.786
2.771
2.756
2.583
2.492
2.481
2.470
1.853
1.821
1.794
1.786
1.778

-0.001

DDD107498 HNMR Analysis, Solvent: CDCl3



MedKoo Cat#: 526858

Name: DDD107498

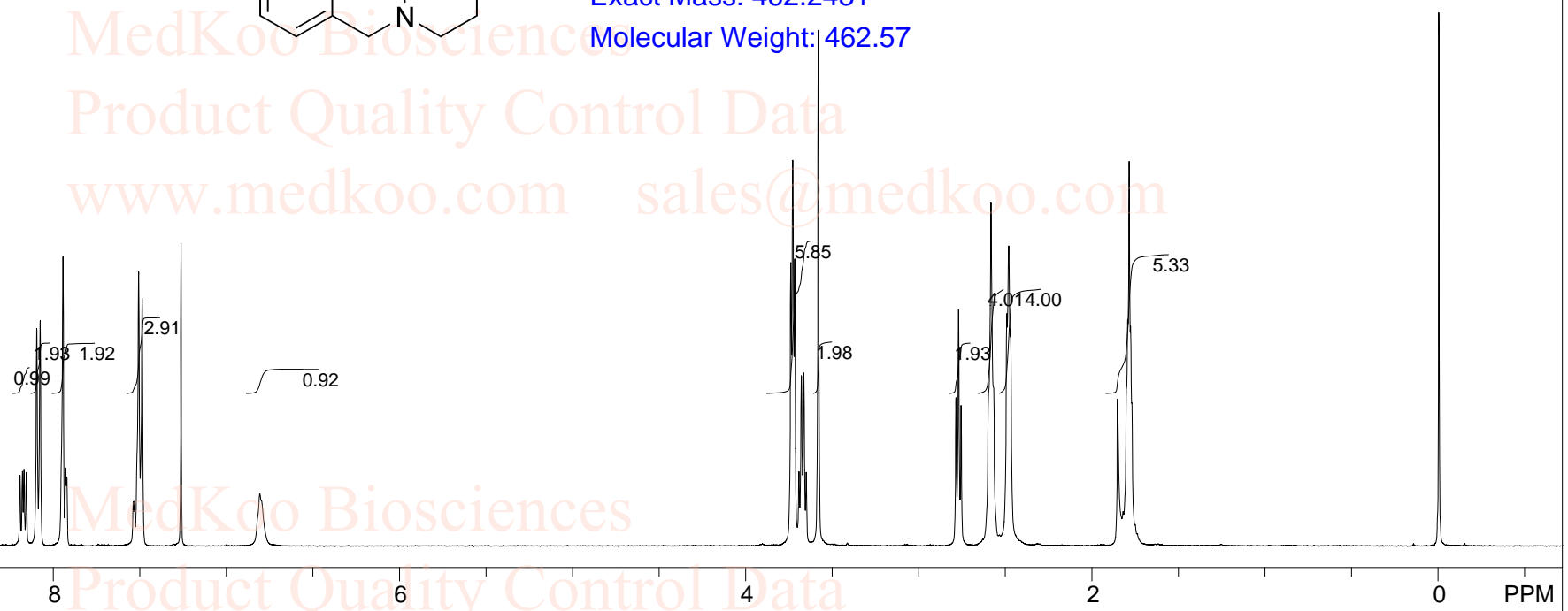
CAS#: 1469439-69-7

Lot#: A9T08K28

Chemical Formula: C27H31FN4O2

Exact Mass: 462.2431

Molecular Weight: 462.57



1469439-69-7 CDCl3

F1: 4000 F2: 1.000

EX: zg30 SW1: 8224

PD: 1.00 sec

OF1: 2461.8

LB: 0.3

PTS1d: 65536

MedKoo Biosciences

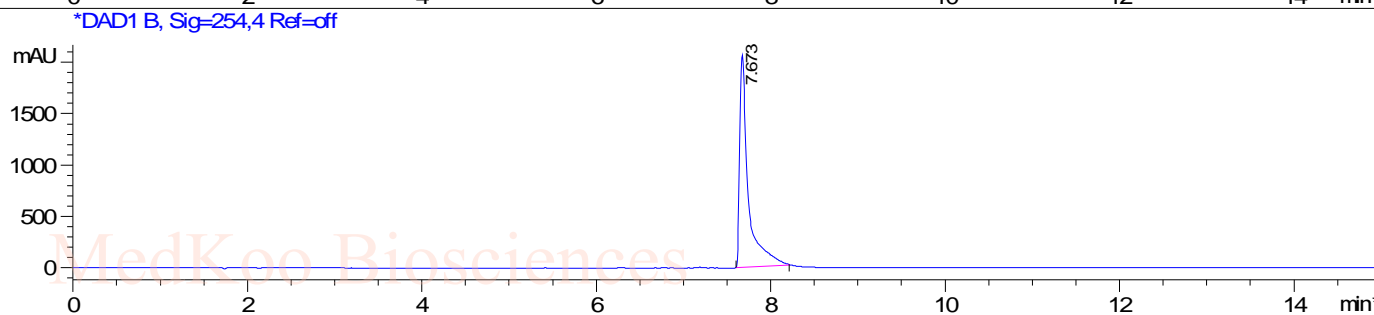
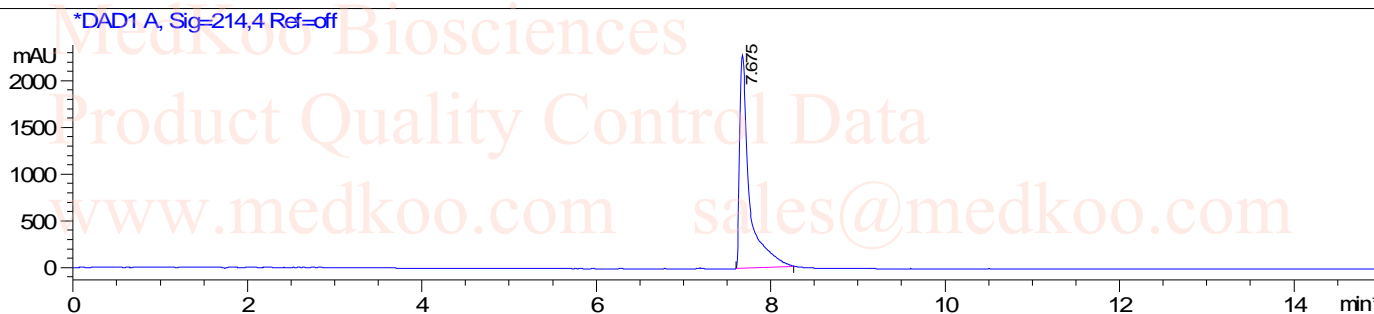
www.medkoo.com

sales@medkoo.com

DDD107498 HPLC Analysis

Sample Name : 1469439-69-7

Method Info : Mobile Phase: A: water (10mM Ammonium hydrogen carbonate) B: ACN
Gradient: 5%-95% B in 8 min, 95%B for 7min.
Flow Rate: 1.0mL/min
Column: XBridge C18, 4.6*150mm, 3.5um
Oven Temperature: 40 C
Mass Range: 110-900 UV: 214nm; 254nm

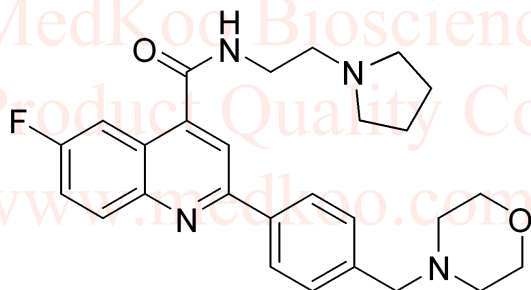


Integration Results for DAD1 A, Sig=214,4 Ref=off

RetTim	Width	Area	Height	Area%
7.67	0.11	17775.07	2280.06	100.00

Integration Results for DAD1 B, Sig=254,4 Ref=off

RetTim	Width	Area	Height	Area%
7.67	0.10	14205.79	2069.90	100.00



MedKoo Cat#: 526858

Name: DDD107498

CAS#: 1469439-69-7

Lot#: A9T08K28

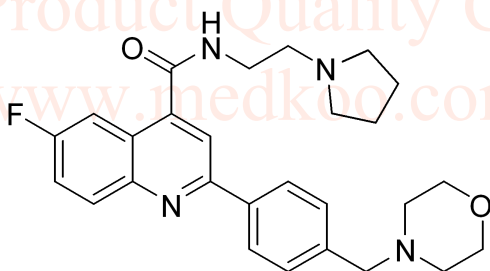
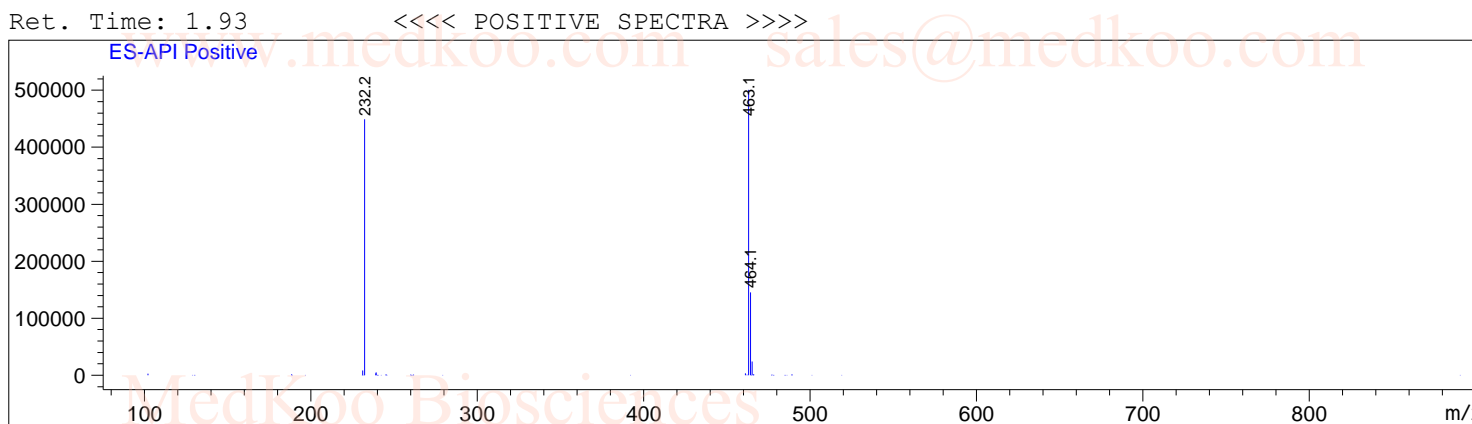
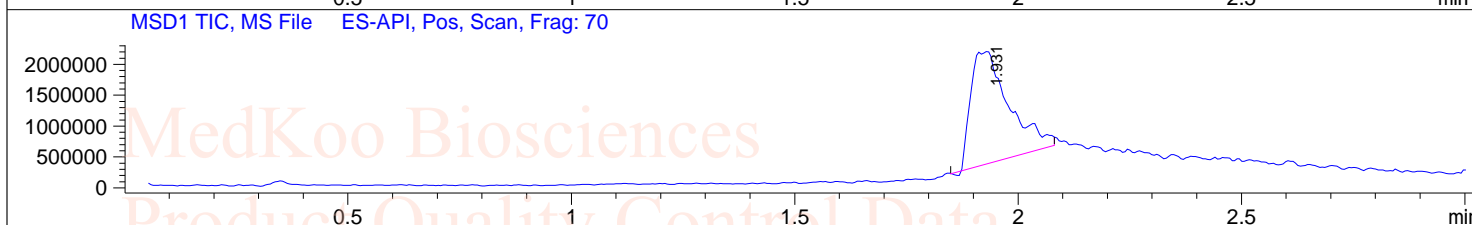
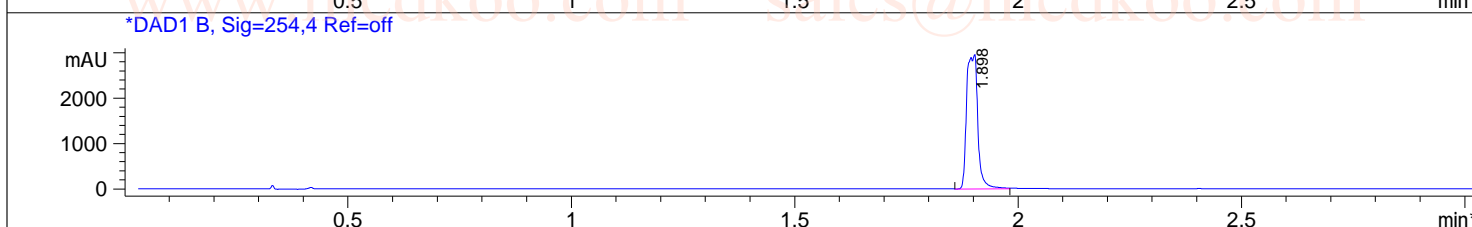
Chemical Formula: C₂₇H₃₁FN₄O₂

Exact Mass: 462.2431

Molecular Weight: 462.57

DDD107498 LC/MS Analysis

Sample Name : 1469439-69-7
Method Info : Mobile Phase: A: water(10mm NH4HCO3) B: ACN
Gradient: 5%-95% B in 1.5min
Flow Rate: 2.0ml/min
Column: X-Bridge C18, 4.6*50mm, 5um
Oven Temperature: 40 C
MASS Range: 110-800



MedKoo Cat#: 526858

Name: DDD107498

CAS#: 1469439-69-7

Lot#: A9T08K28

Chemical Formula: C27H31FN4O2

Exact Mass: 462.2431

Molecular Weight: 462.57