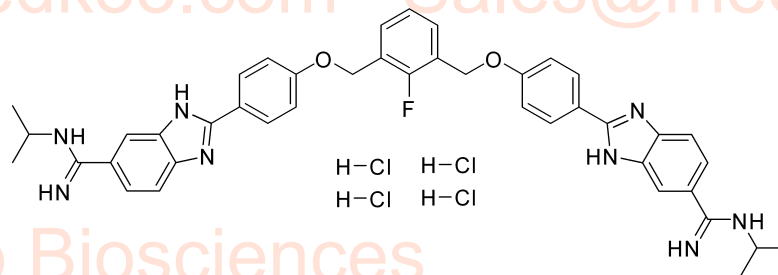


# DB2313 HCl HNMR Analysis, Solvent: DMSO

www.medkoo.com Sales@medkoo.com



MedKoo Biosciences

Product Quality Control Data

MedKoo Cat#: 563801

Name: DB2313 HCl

CAS#: 2170606-75-2 (HCl)

Lot#: T21D06P08

Chemical Formula: C<sub>42</sub>H<sub>45</sub>Cl<sub>4</sub>FN<sub>8</sub>O<sub>2</sub>

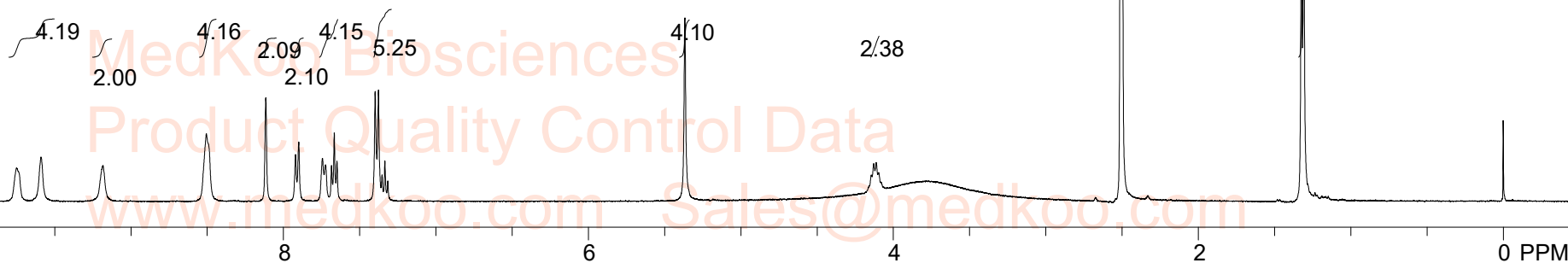
Exact Mass: 852.2404

Molecular Weight: 854.67

MedKoo Biosciences

Product Quality Control Data

www.medkoo.com Sales@medkoo.com



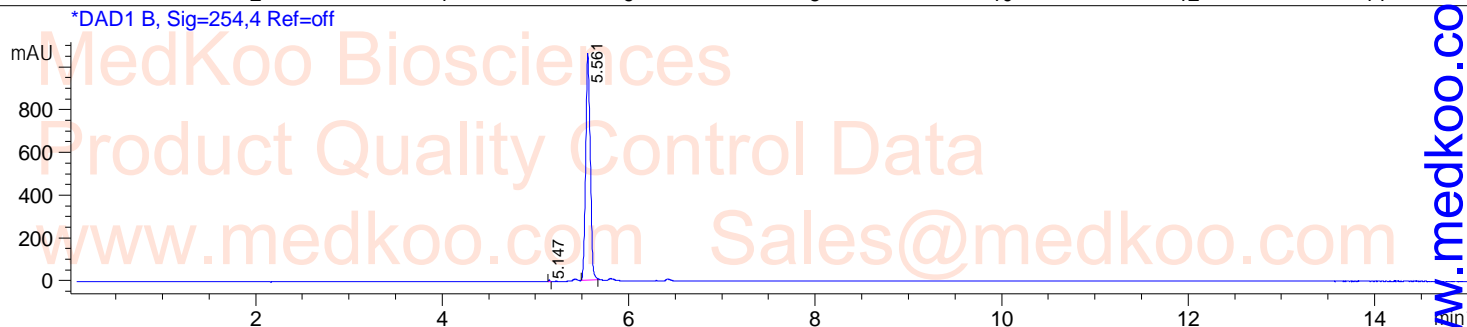
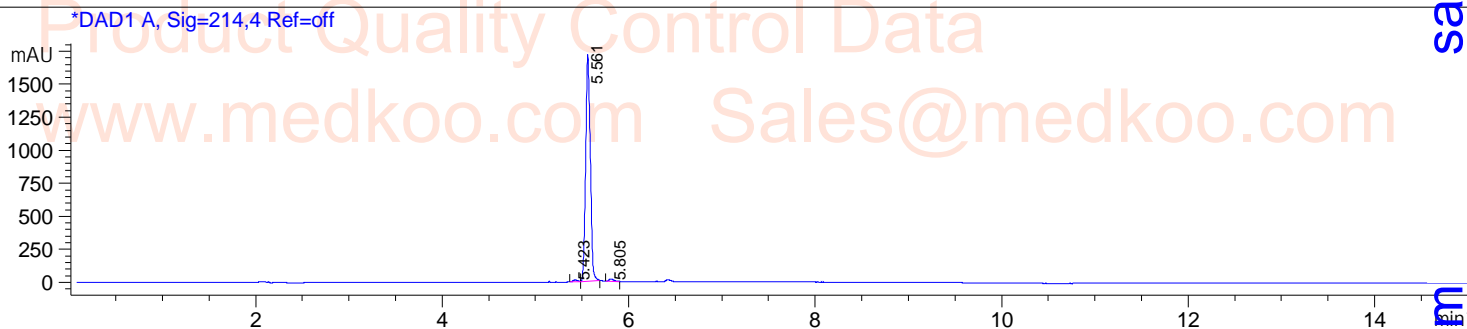
NMRB003, DMSO,

|             |               |             |             |              |
|-------------|---------------|-------------|-------------|--------------|
| F1: 400.232 | F2: 1.000     | SW1: 8224   | OF1: 2474.2 | PTS1d: 32768 |
| EX: zg30    | PW: 14.0 usec | PD: 1.0 sec | NA: 8       | LB: 0.0      |

Nuts - \$pdata

# DB2313 HCl HPLC Analysis

**Sample Name** : DB2313 **Tgt Mass(EZX)** :  
**Acq. Operator** : **Location** : P1-F-03  
**Spec. Reported** : MS Integration **Inj** : 1  
**Acq. Method** : D:\METHODS\1-POS-15MIN.M **Inj Volume** : 0.8 ul  
**Analysis Method** : D:\METHODS\1-POS-15MIN.M  
**Sample Info** : Easy-Access Method: '1-POS-15MIN.M'  
**Method Info** : **Mobile Phase**: A: water(0.01%TFA) B: ACN(0.01%TFA)  
**Gradient**: 5%B increase to 95%B within 8.0 min, 95%B for 7.0 min.  
**Flow Rate**: 1.0ml/min  
**Column**: Luna C18(2) 100A, 5um, 4.6\*150mm  
**Column Temperature**: 40 C  
**Detection**: UV(214,4nm) and MS(ESI, Pos mode, 110 to 1500 amu)



Integration Results for DAD1 A, Sig=214,4 Ref=off

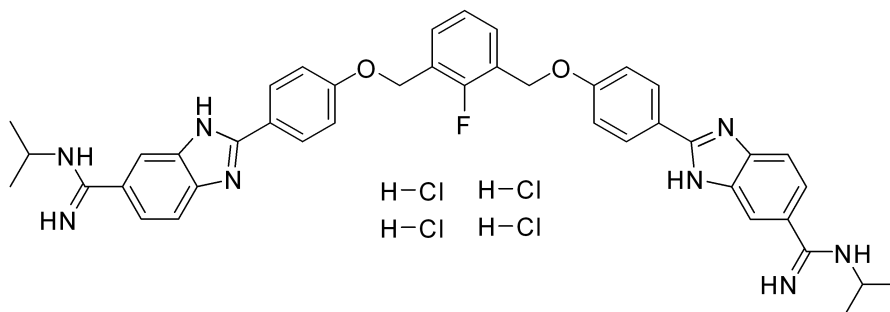
| RetTim | Width | Area    | Height  | Area% |
|--------|-------|---------|---------|-------|
| 5.42   | 0.05  | 44.31   | 14.29   | 0.73  |
| 5.56   | 0.05  | 5946.78 | 1715.66 | 98.27 |
| 5.81   | 0.05  | 60.08   | 15.39   | 0.99  |

**MedKoo Cat#**: 563801  
**Name**: DB2313 HCl  
**CAS#**: 2170606-75-2 (HCl)  
**Lot#**: T21D06P08

Integration Results for DAD1 B, Sig=254,4 Ref=off

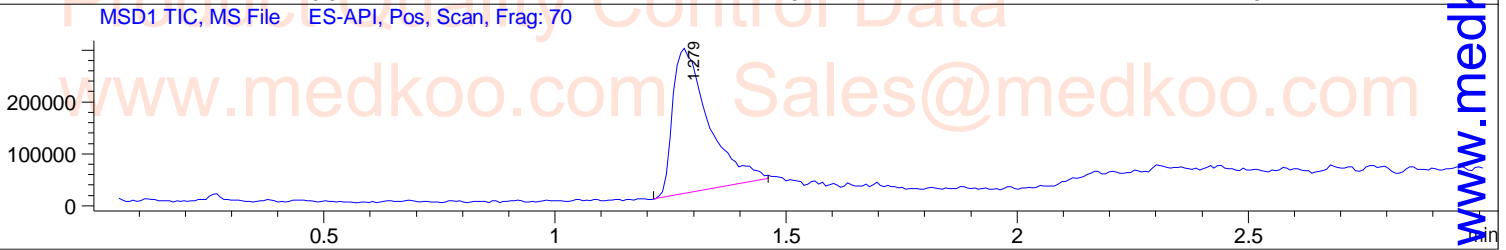
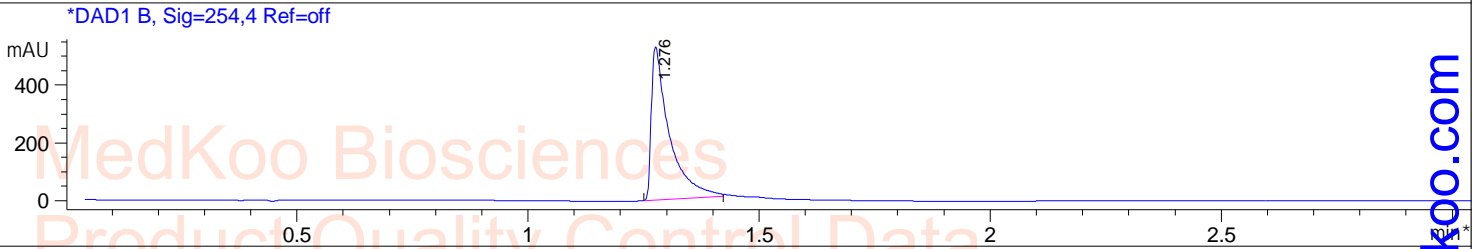
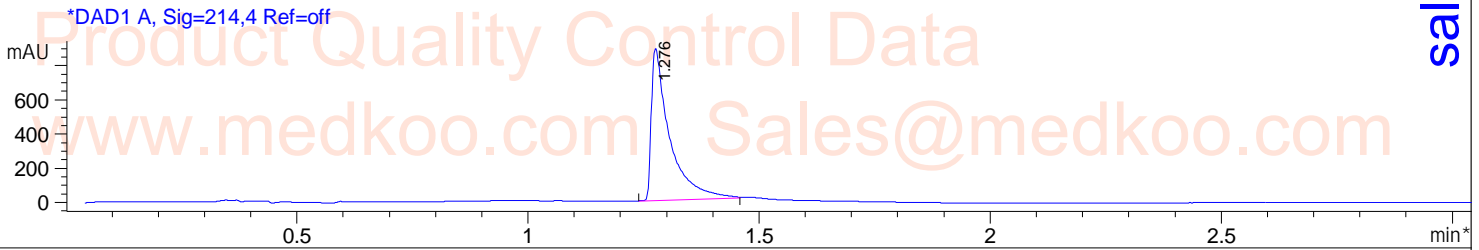
| RetTim | Width | Area    | Height  | Area% |
|--------|-------|---------|---------|-------|
| 5.15   | 0.01  | 5.12    | 7.64    | 0.14  |
| 5.56   | 0.06  | 3616.71 | 1062.92 | 99.86 |

**Chemical Formula**: C42H45Cl4FN8O2  
**Exact Mass**: 852.2404  
**Molecular Weight**: 854.67



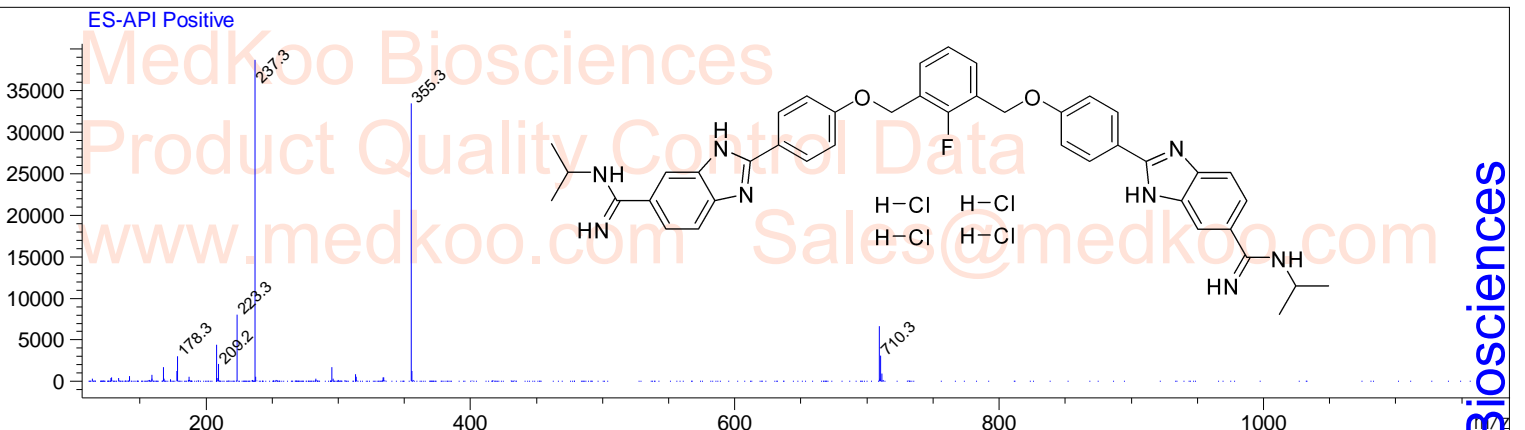
# DB2313 HCl LC/MS Analysis

Sample Name : DB2313 Tgt Mass(EZX) :  
Acq. Operator : Location : P1-E-02  
Spec. Reported : MS Integration Inj : 1  
Acq. Method : D:\METHODS\1-POS-3MIN.M Inj Volume : 0.8 ul  
Analysis Method : D:\METHODS\1-POS-3MIN.M  
Sample Info : Easy-Access Method: '1-POS-3MIN.M'  
Method Info : Mobile Phase: A: water(0.01%TFA) B: ACN(0.01%TFA)  
Gradient: 5%B increase to 95%B within 1.3 min, 95%B for 1.7 min.  
Flow Rate: 2.0ml/min  
Column: Sunfire C18, 4.6\*50mm, 3.5um  
Column Temperature: 50 C  
Detection: UV(214,4nm) and MS(ESI, Pos mode, 110 to 1200 amu)



Ret. Time: 1.28

<<<< POSITIVE SPECTRA >>>>



MedKoo Cat#: 563801  
Name: DB2313 HCl  
CAS#: 2170606-75-2 (HCl)  
Lot#: T21D06P08  
Chemical Formula: C<sub>42</sub>H<sub>45</sub>Cl<sub>4</sub>FN<sub>8</sub>O<sub>2</sub>  
Exact Mass: 852.2404  
Molecular Weight: 854.67

sales@medkoo.com

www.medkoo.com

MedKoo Biosciences