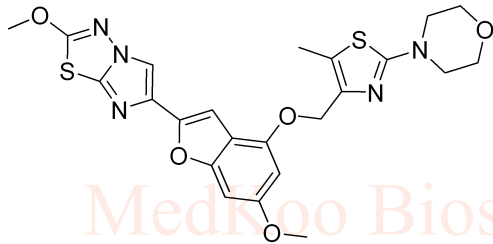


BMS-986120 HNMR Analysis, Solvent: CDCl3

Product Quality Control Data

www.medkoo.com sales@medkoo.com



MedKoo Cat#: 522695

Name: BMS-986120

CAS#: 1478712-37-6

Lot#: YXM201221

Chemical Formula: C₂₃H₂₃N₅O₅S₂

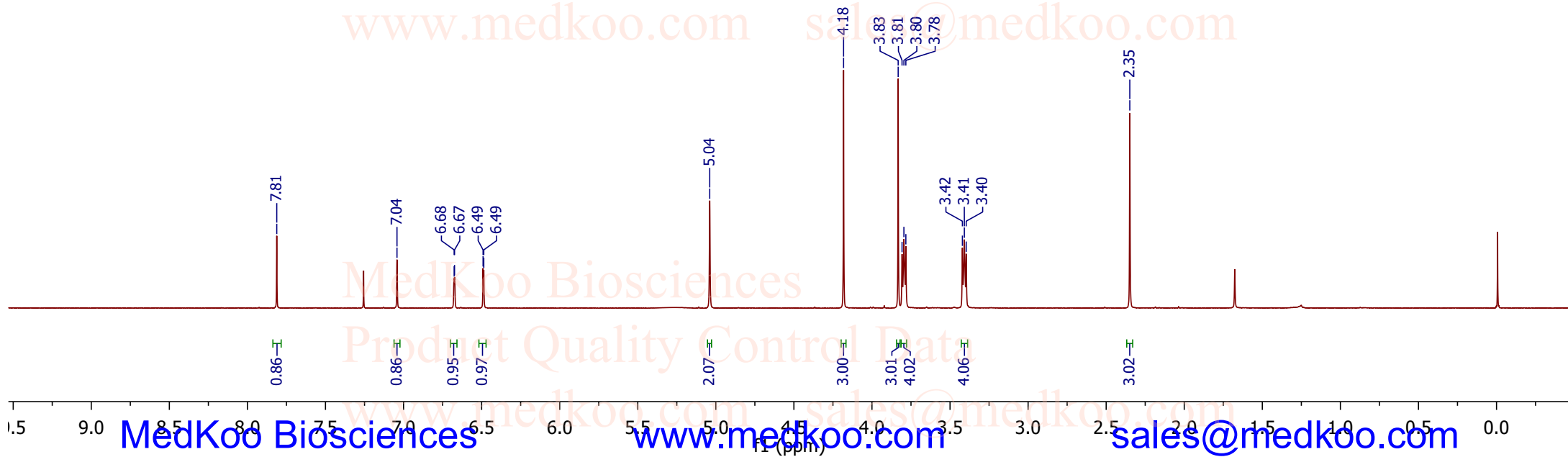
Exact Mass: 513.1141

Molecular Weight: 513.59

MedKoo Biosciences

Product Quality Control Data

www.medkoo.com sales@medkoo.com

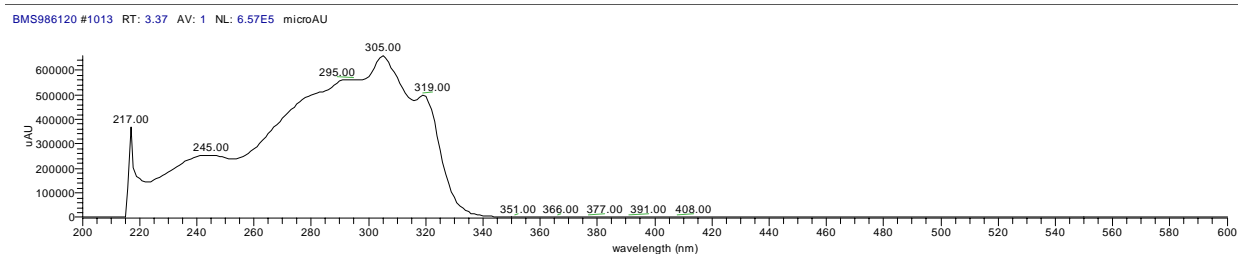
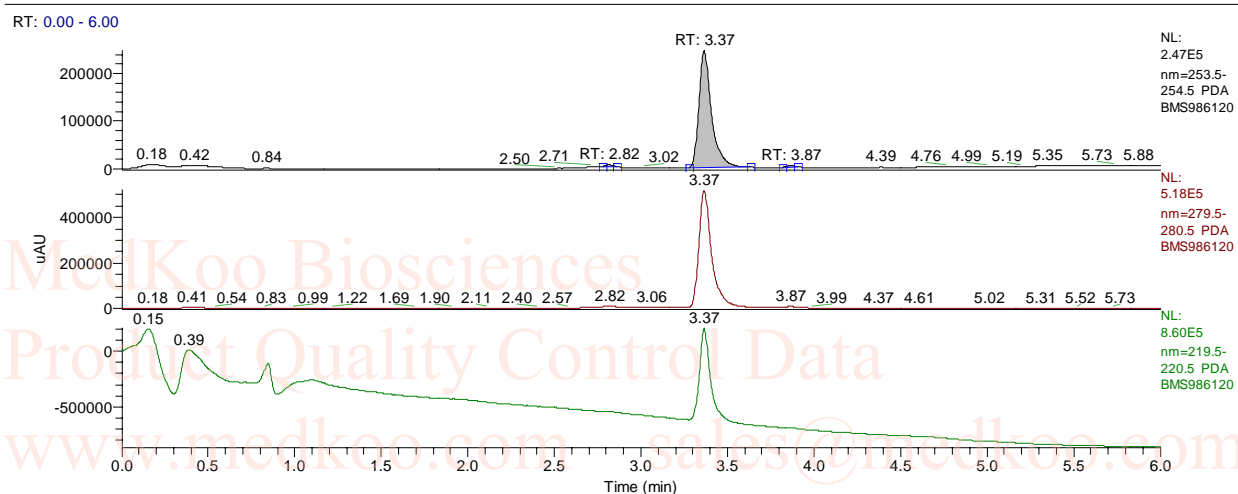


MedKoo Biosciences

www.medkoo.com

sales@medkoo.com

BMS-986120 HPLC Analysis



PEAK LIST

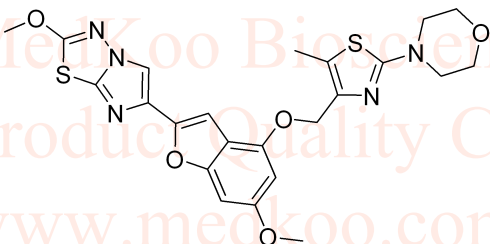
BMS986120.RAW

RT: 0.00 - 6.00

Number of detected peaks: 3

Apex

RT	Start RT	End RT	Height	%Height	Area	%Area
2.82	2.78	2.86	4042.223	1.6	12255.44	0.96
3.37	3.28	3.64	244949.3	97.1	1250074	98.22
3.87	3.82	3.9	3285.475	1.3	10414.55	0.82



MedKoo Cat#: 522695

Name: BMS-986120

CAS#: 1478712-37-6

Lot#: YXM201221

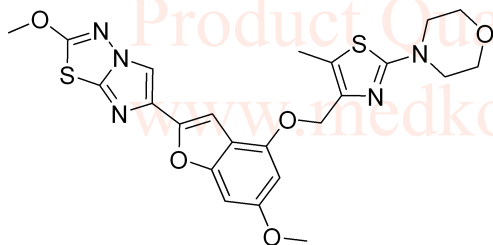
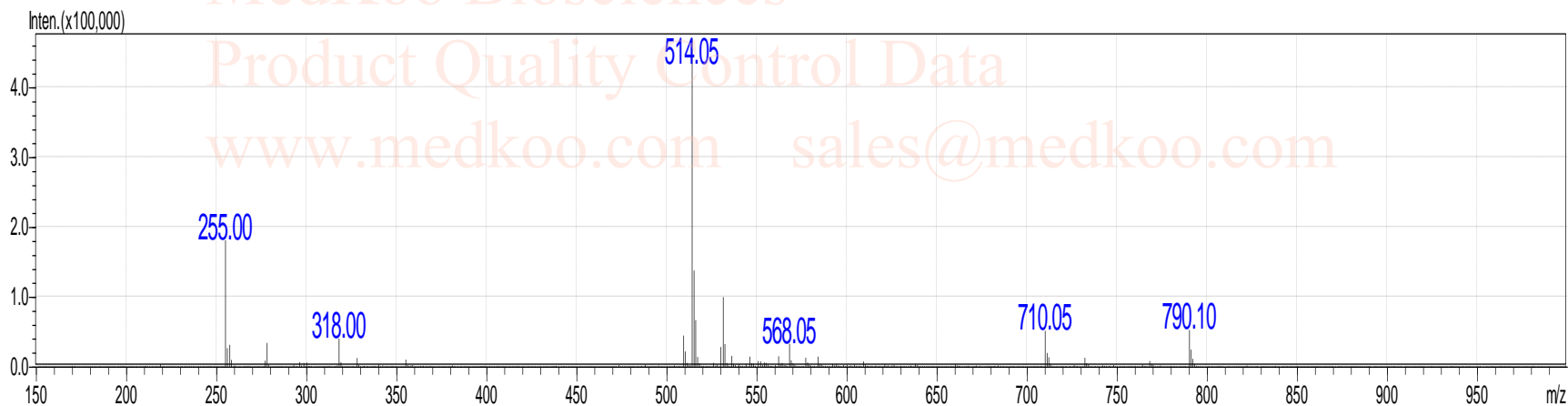
Chemical Formula: C₂₃H₂₃N₅O₅S₂

Exact Mass: 513.1141

Molecular Weight: 513.59

BMS-986120 MS Analysis

BMS-986120, MS, [M+1]⁺:



MedKoo Cat#: 522695

Name: BMS-986120

CAS#: 1478712-37-6

Lot#: YXM201221

Chemical Formula: C₂₃H₂₃N₅O₅S₂

Exact Mass: 513.1141

Molecular Weight: 513.59