

7.24
7.23
7.16
7.14

4.34
4.33
4.17
4.13

3.69
3.66
3.50
3.27
3.26
3.25

2.92

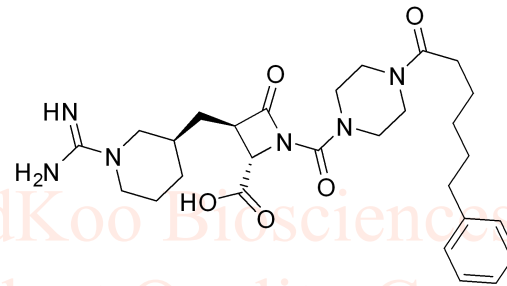
2.61
2.60
2.58
2.30
2.28
2.19
1.72
1.66
1.65
1.63
1.61
1.59
1.51
1.38
1.36
1.34
1.28
1.26

BMS363131 HNMR Analysis, Solvent: CDCl3

Product Quality Control Data

www.medkoo.com

sales@medkoo.com



MedKoo Cat#: 524471

Name: BMS-363131

CAS#: 384829-65-6

Lot#: YXM90611

Chemical Formula: C28H40N6O5

Exact Mass: 540.30602

Molecular Weight: 540.65

MedKoo Biosciences

Product Quality Control Data

www.medkoo.com

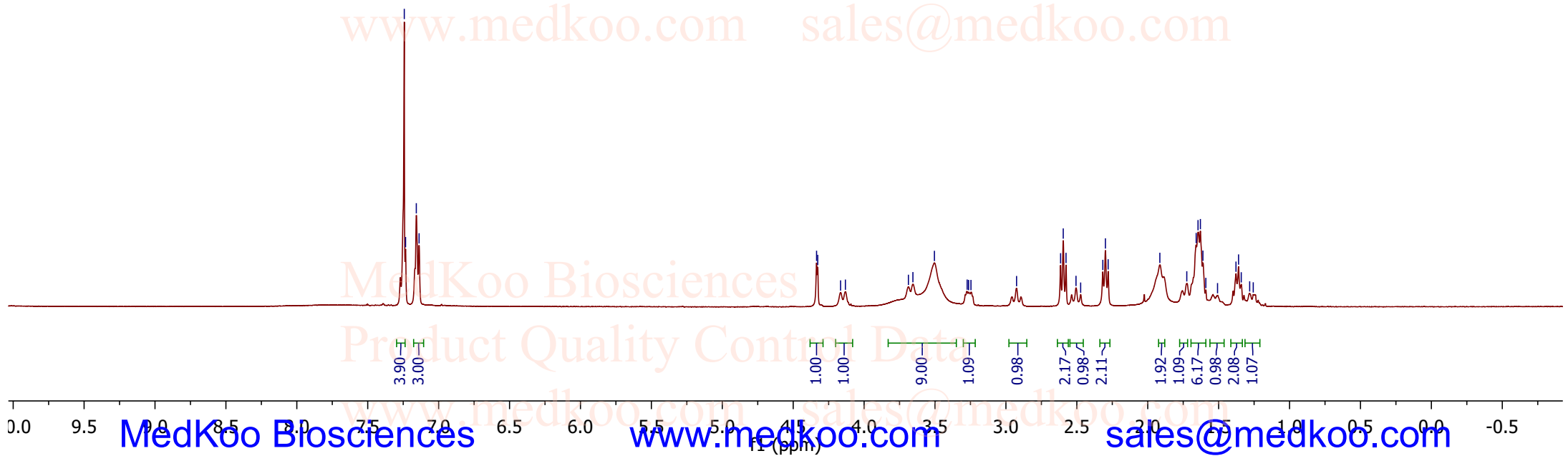
sales@medkoo.com

MedKoo Biosciences

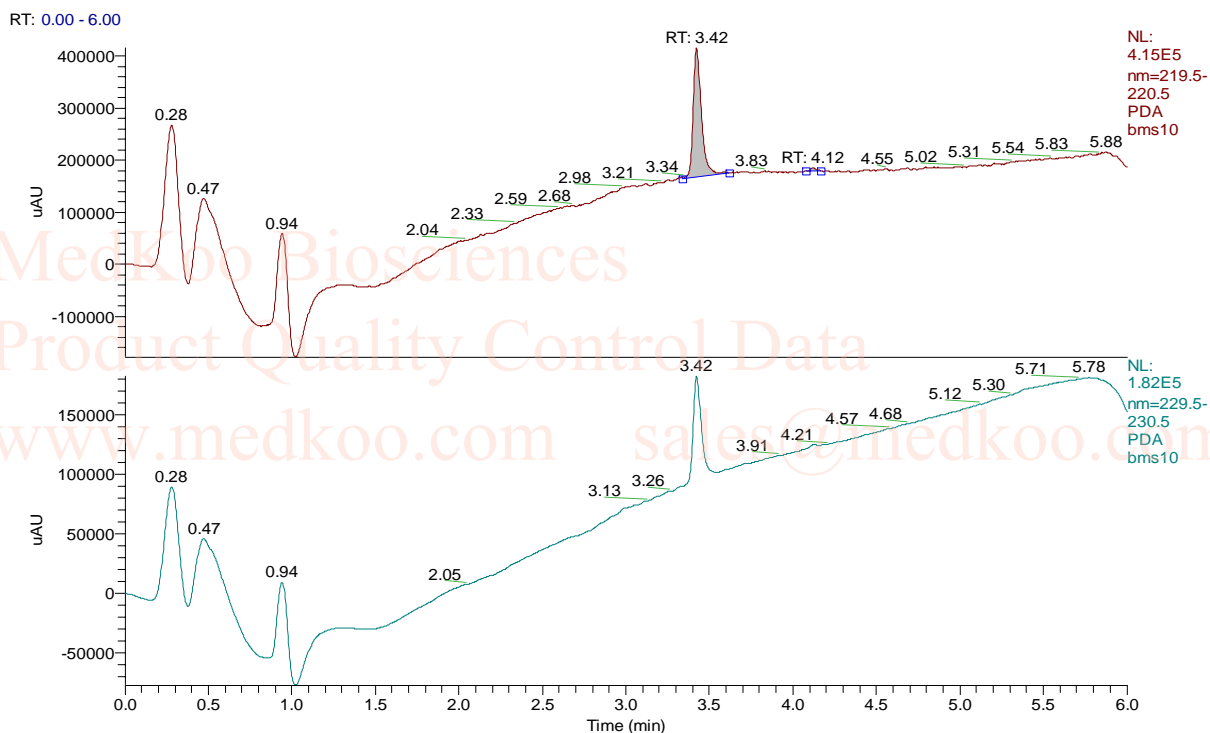
Product Quality Control Data

www.medkoo.com

sales@medkoo.com



BMS363131 HPLC Analysis



PEAK LIST

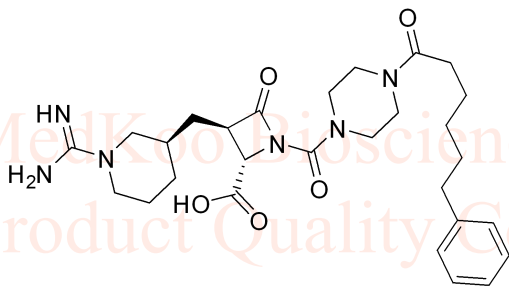
BMS363131.RAW

RT: 0.00 - 6.00

Number of detected peaks: 2

Apex

RT	Start RT	End RT	Area	%Area	Height	%Height
3.42	3.34	3.61	844112.7	98.31	246877.5	97.71
4.12	4.08	4.17	14551.12	1.69	5789.365	2.29



MedKoo Cat#: 524471

Name: BMS-363131

CAS#: 384829-65-6

Lot#: YXM90611

Chemical Formula: C₂₈H₄₀N₆O₅

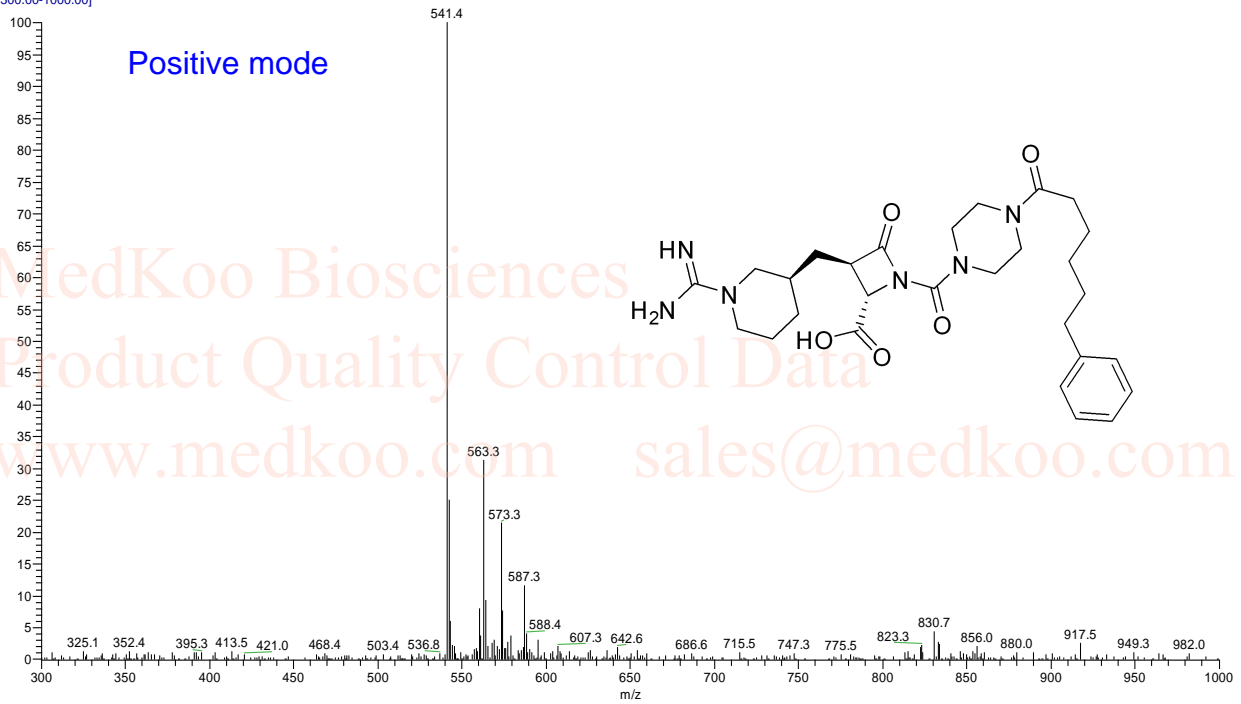
Exact Mass: 540.30602

Molecular Weight: 540.65

BMS363131 MS Analysis Report

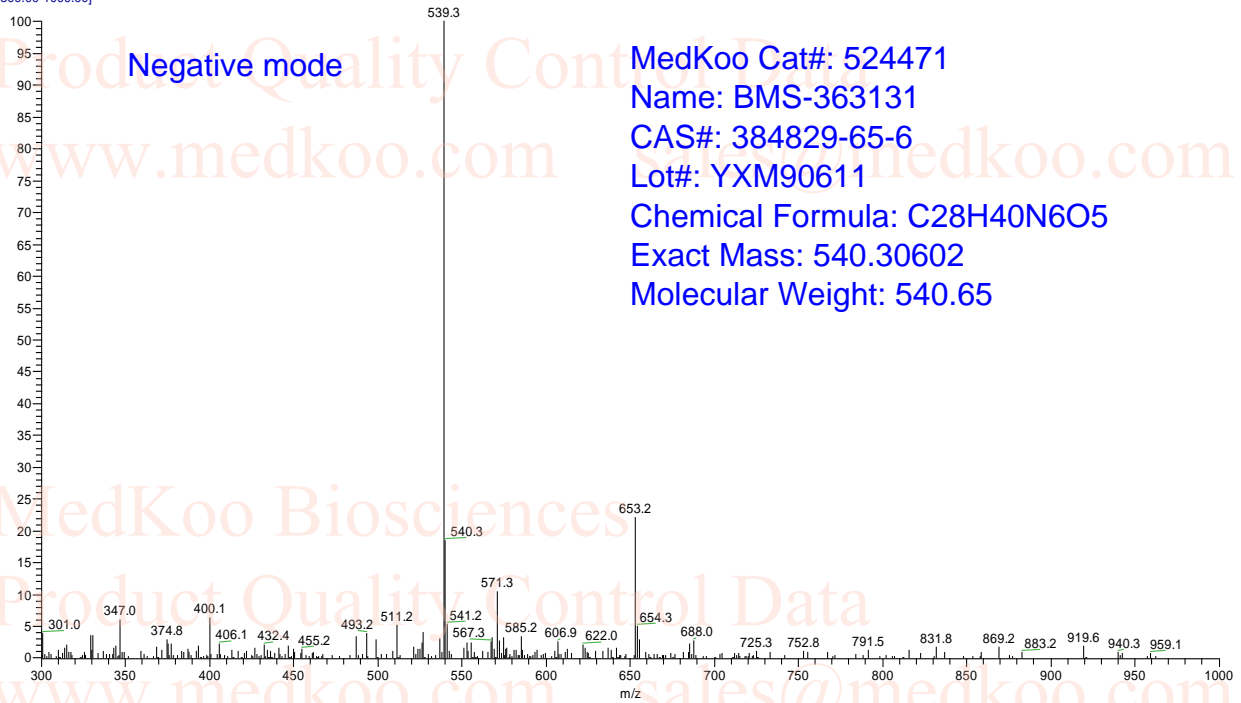
#5 RT: 0.06 AV:1 NL: 8.26E8 T: + c ESI ms
[300.00-1000.00]

Positive mode



#4 RT: 0.04 AV:1 NL: 1.00E7 T: - c ESI ms
[300.00-1000.00]

Negative mode



MedKoo Cat#: 524471

Name: BMS-363131

CAS#: 384829-65-6

Lot#: YXM90611

Chemical Formula: C₂₈H₄₀N₆O₅

Exact Mass: 540.30602

Molecular Weight: 540.65