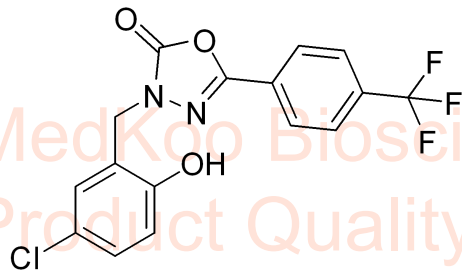




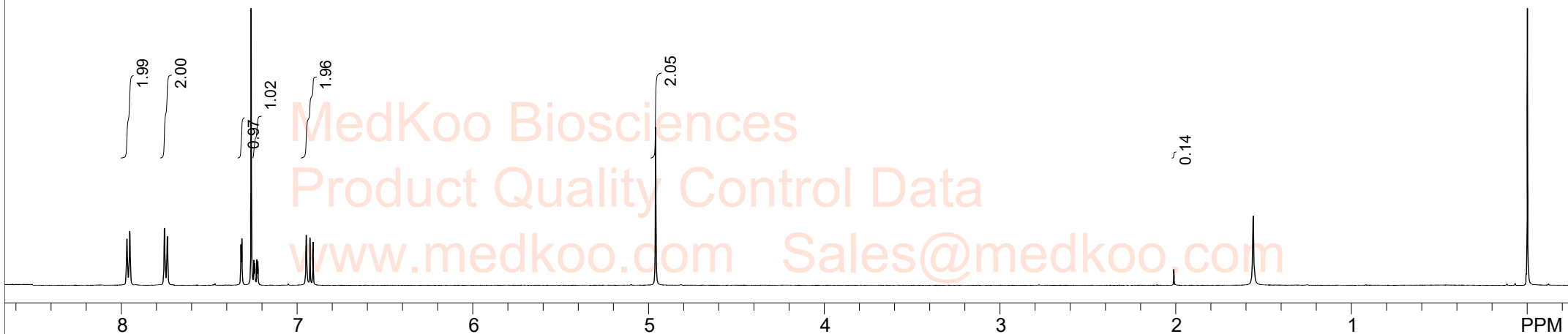
BMS-191011 HNMR Analysis, Solvent:CDCl3

MedKoo Biosciences
 Product Quality Control Data
 www.medkoo.com Sales@medkoo.com



MedKoo Cat#: 524445
 Name: BMS-191011
 CAS#: 202821-81-6
 Lot#: A21T06K03
 Chemical Formula: C16H10ClF3N2O3
 Exact Mass: 370.0332
 Molecular Weight: 370.71

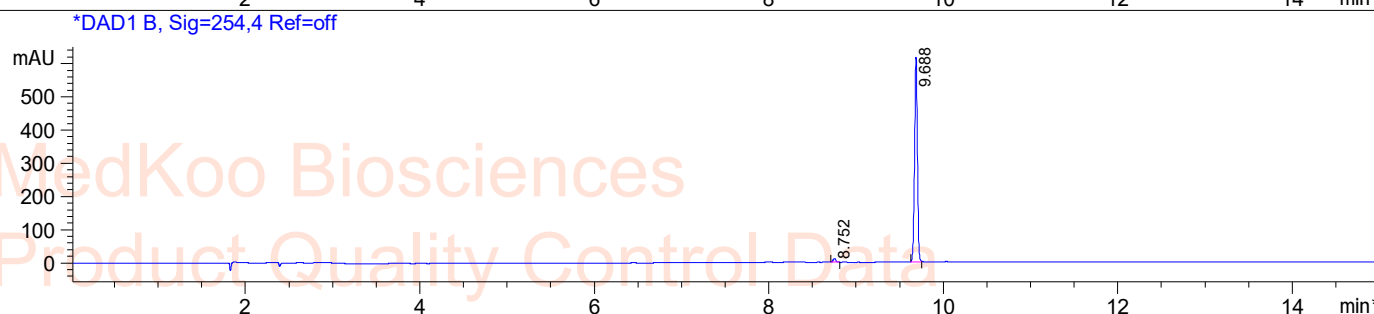
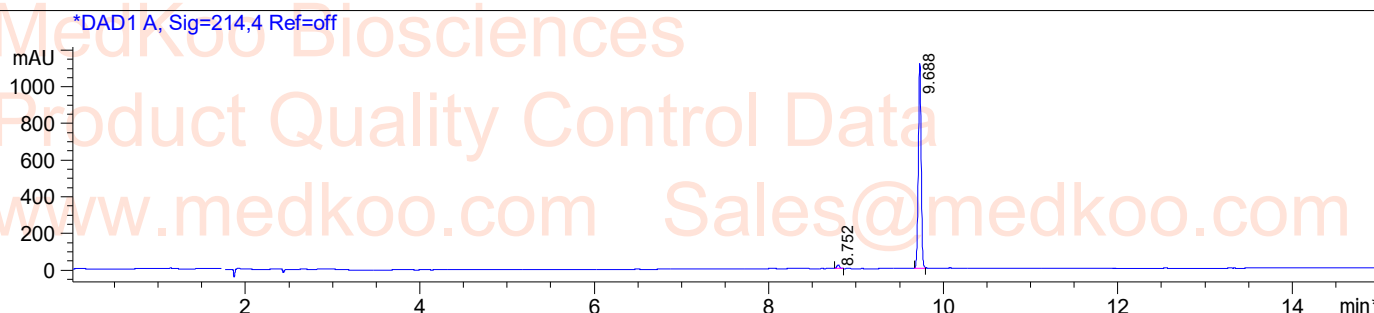
MedKoo Biosciences
 Product Quality Control Data
 www.medkoo.com Sales@medkoo.com



F1: 500.130	F2: 1.000	SW1: 10331	OF1: 3076.3	PTS1d: 32768
EX: zg30	PW: 12.7 uscc	PD: 1.0 us	LB: 0.3	N

BMS-191011 HPLC Analysis

Sample Name : 202821-81-6
Method Info : Mobile Phase : A:water(0.01%TFA) B:ACN(0.01%TFA)
Gradient:5%B increase to 95%B within 9min,95%B for 6min
Flow Rate :1ml/min
Column :Sunfire C18 150*4.6mm,3.5um
Column Temperature:45C
Detection:UV(214nm,4nm) and MS(ESI,POS Mode,110-1300amu)

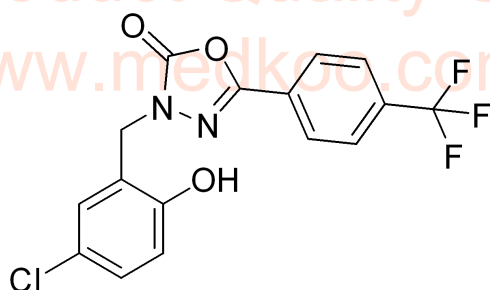


Integration Results for DAD1 A, Sig=214,4 Ref=off

RetTim	Width	Area	Height	Area%
8.75	0.04	113.82	50.16	1.04
9.69	0.03	2615.38	1156.26	98.96

Integration Results for DAD1 B, Sig=254,4 Ref=off

RetTim	Width	Area	Height	Area%
8.75	0.04	25.30	11.31	1.78
9.69	0.03	1394.82	616.62	98.22



MedKoo Cat#: 524445

Name: BMS-191011

CAS#: 202821-81-6

Lot#: A21T06K03

Chemical Formula: C₁₆H₁₀ClF₃N₂O₃

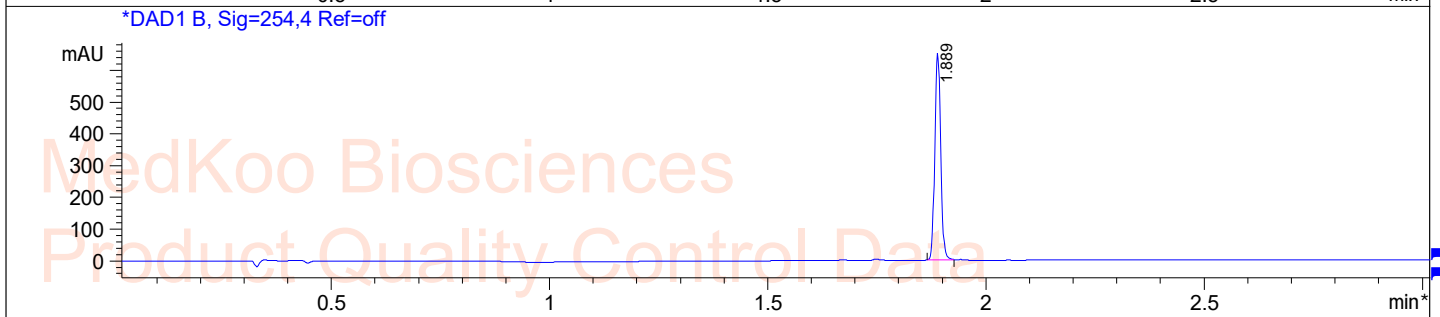
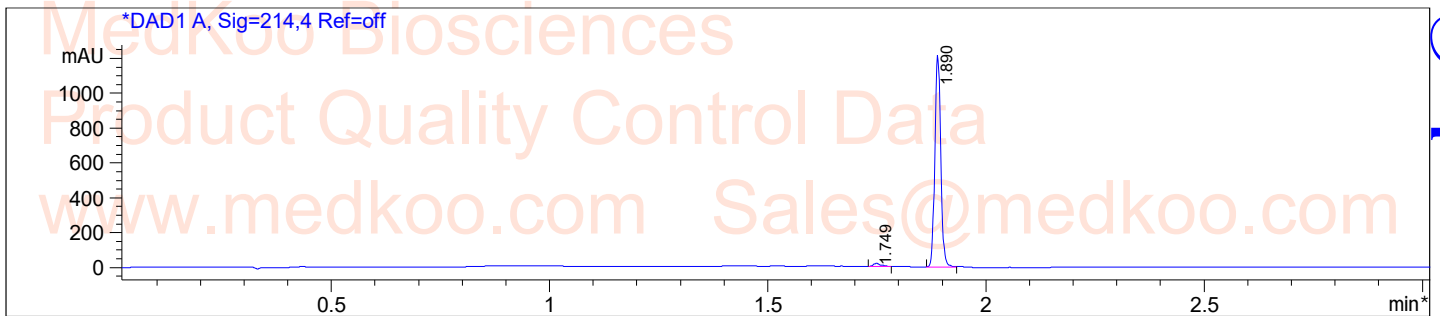
Exact Mass: 370.0332

Molecular Weight: 370.71

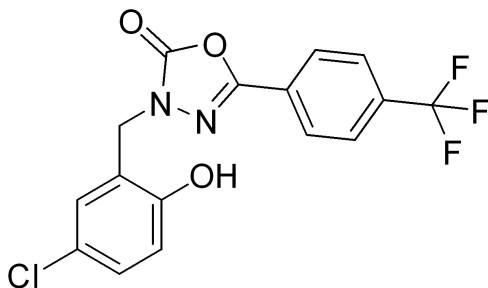
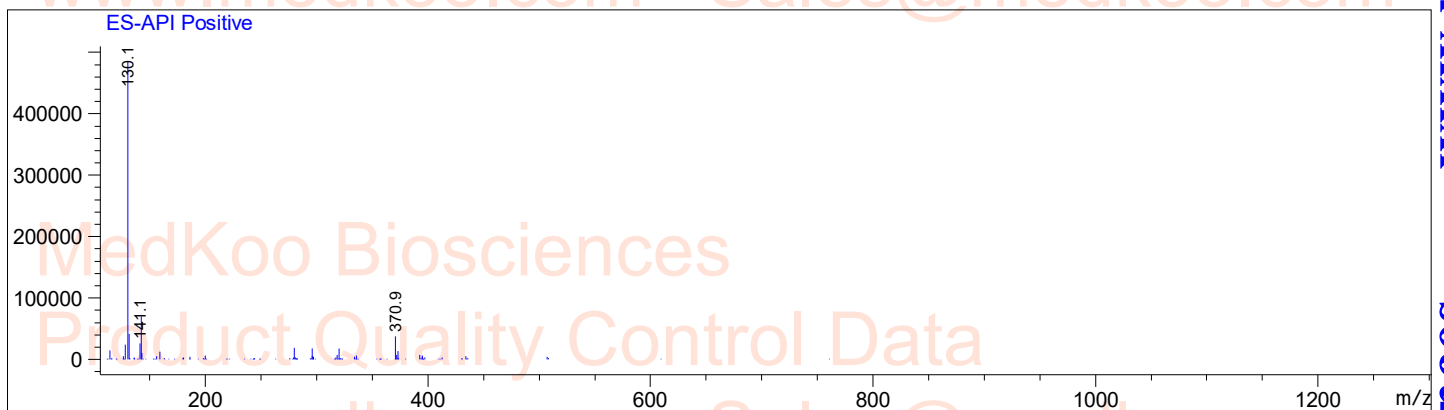
BMS-191011 LC/MS Analysis

Sample Name : 202821-81-6

Method Info : Mobile Phase : A:water(0.01%TFA) B:ACN(0.01%TFA)
Gradient:5%B increase to 95%B within 1.5min,95%B for 1.5min
Flow Rate :2.0ml/min
Column :SunFire C18 3.5um, 4.6mm*50mm
Column Temperature:50C
Detection:UV(214nm,4nm) and MS(ESI,POS Mode,110-1300amu)



Ret. Time: 1.89



MedKoo Cat#: 524445

Name: BMS-191011

CAS#: 202821-81-6

Lot#: A21T06K03

Chemical Formula: C₁₆H₁₀ClF₃N₂O₃

Exact Mass: 370.0332

Molecular Weight: 370.71

sales@medkoo.com

www.medkoo.com

Medkoo Biosciences