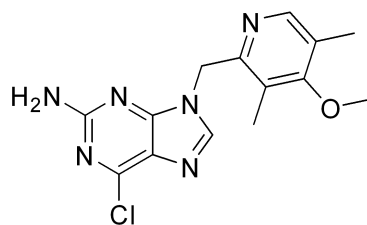
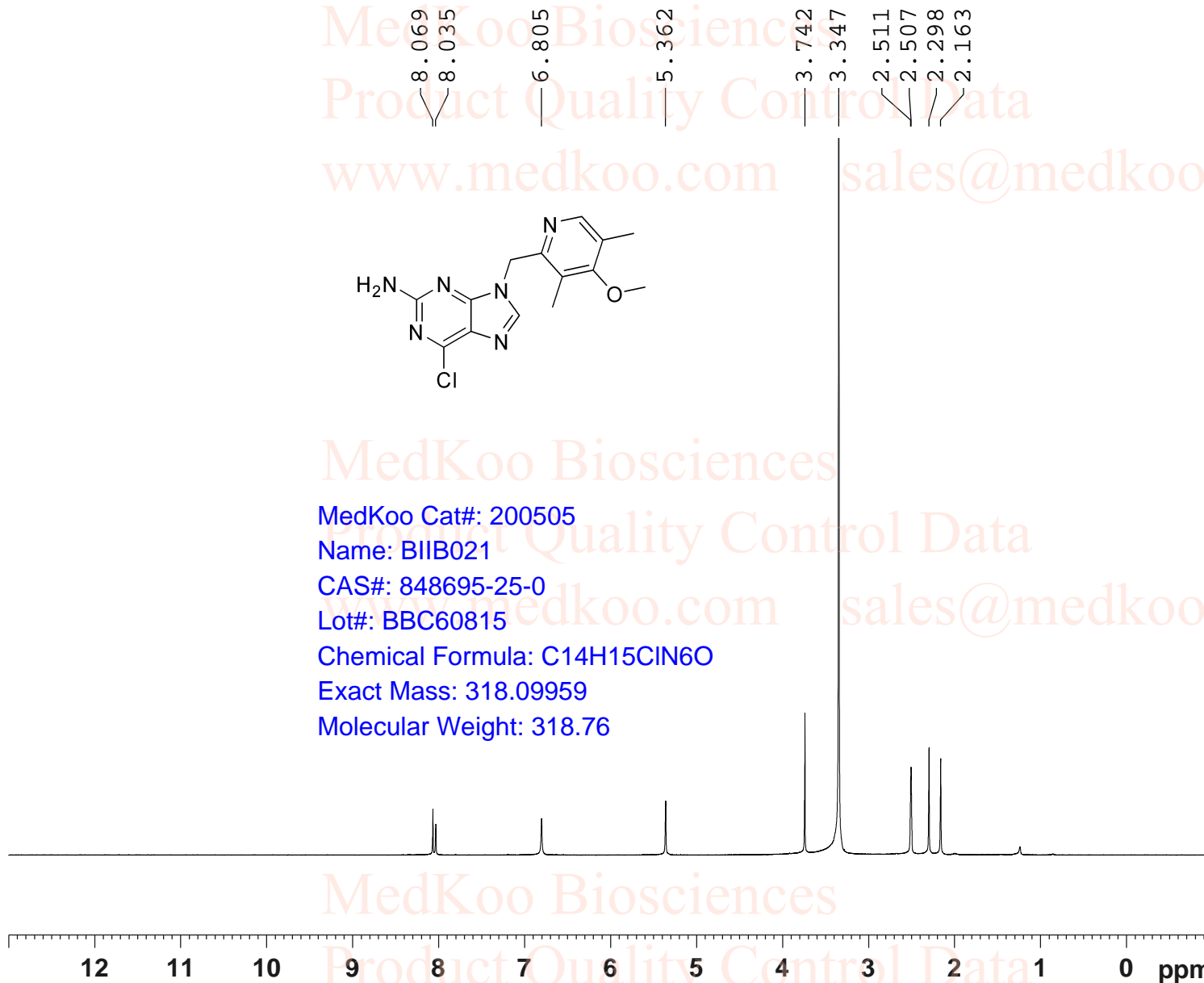


BIIB-021 NMR Analysis, Solvent = DMSO



MedKoo Cat#: 200505
 Name: BIIB021
 CAS#: 848695-25-0
 Lot#: BBC60815
 Chemical Formula: C₁₄H₁₅ClN₆O
 Exact Mass: 318.09959
 Molecular Weight: 318.76



Current Data Parameters
 NAME BIIB-021
 EXPNO 10
 PROCNO 1
 F2 - Acquisition Parameters
 INSTRUM spect
 PROBHD 5 mm PABBO BB-
 PULPROG zg30
 TD 65536
 SOLVENT DMSO
 NS 16
 DS 2
 SWH 8012.820 Hz
 FIDRES 0.122266 Hz
 AQ 4.0894465 sec
 RG 144
 DW 62.400 usec
 DE 6.50 usec
 TE 301.4 K
 D1 1.00000000 sec
 TD0 1

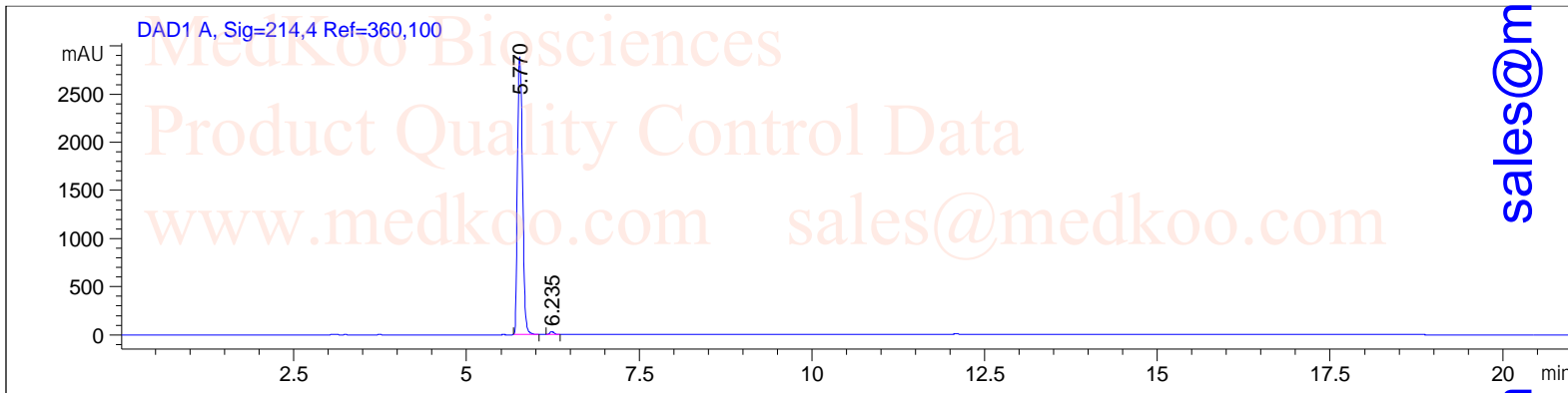
===== CHANNEL f1 =====
 SFO1 400.1324710 MHz
 NUC1 1H
 P1 13.00 usec
 PLW1 19.00000000 W

F2 - Processing parameters
 SI 65536
 SF 400.1300000 MHz
 WDW no
 SSB 0
 LB 0 Hz
 GB 0
 PC 1.00

BIIB-021 HPLC Analysis

=====

User	: zj	Seq. Line	: 13
Instrument	: Instrument 1	Location	: Vial 17
Sample Name	: IIB-021	Inj	: 1
Acq. Method	: C:\CHEM32\1\DATA\TEST-KR.M	Inj Volume	: 2.0 µl
Analysis Method	: C:\CHEM32\1\METHODS\TEST-KR.M		



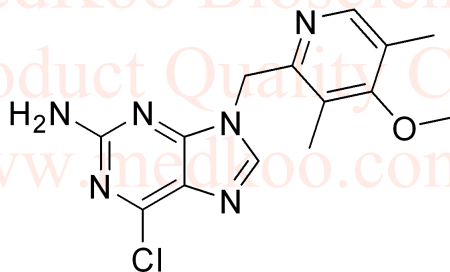
=====
Area Percent Report
=====

Sorted By : Signal
Multiplier : 1.0000
Dilution : 1.0000
Use Multiplier & Dilution Factor with ISTDs

Signal 1: DAD1 A, Sig=214,4 Ref=360,100

Peak #	Ret. Time [min]	Type	Width [min]	Area [mAU*s]	Height [mAU]	Area %
1	5.770	BB	0.0838	1.47957e4	2885.91113	99.0993
2	6.235	BB	0.0656	134.47588	31.63752	0.9007

Total: 1.49302e4 2917.54865



MedKoo Cat#: 200505

Name: BIIB021

CAS#: 848695-25-0

Lot#: BBC60815

Chemical Formula: C₁₄H₁₅ClN₆O

Exact Mass: 318.09959

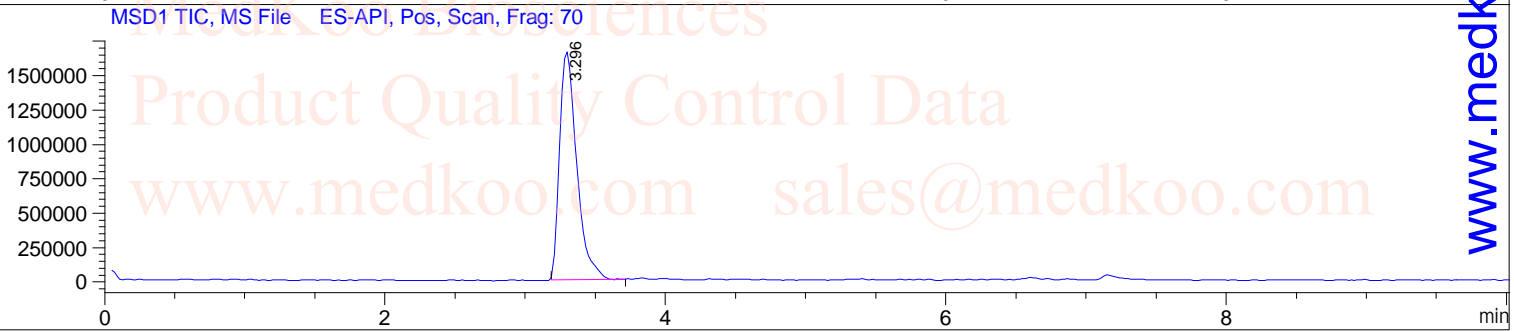
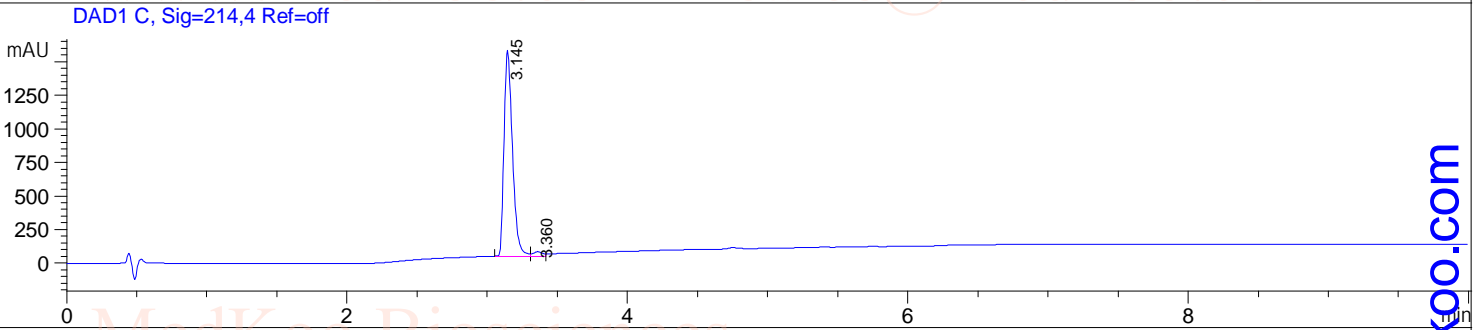
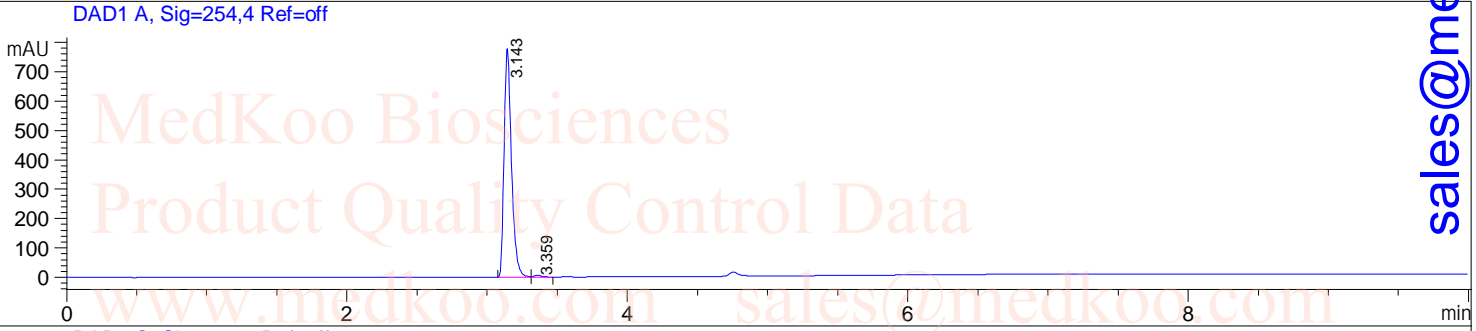
Molecular Weight: 318.76

BIIB-021 LC/MS Analysis

Sample Name : BIIB-021
Acq. Operator : [BSB3]
Spec. Reported : MS Integration
Acq. Method : C:\Chem32\1\DATA\TEST POS.M
Analysis Method : C:\Chem32\1\METHODS\TEST POS.M

Tgt Mass(EZX) :
Location : Vial 11
Inj : 1
Inj Volume : 1 ul

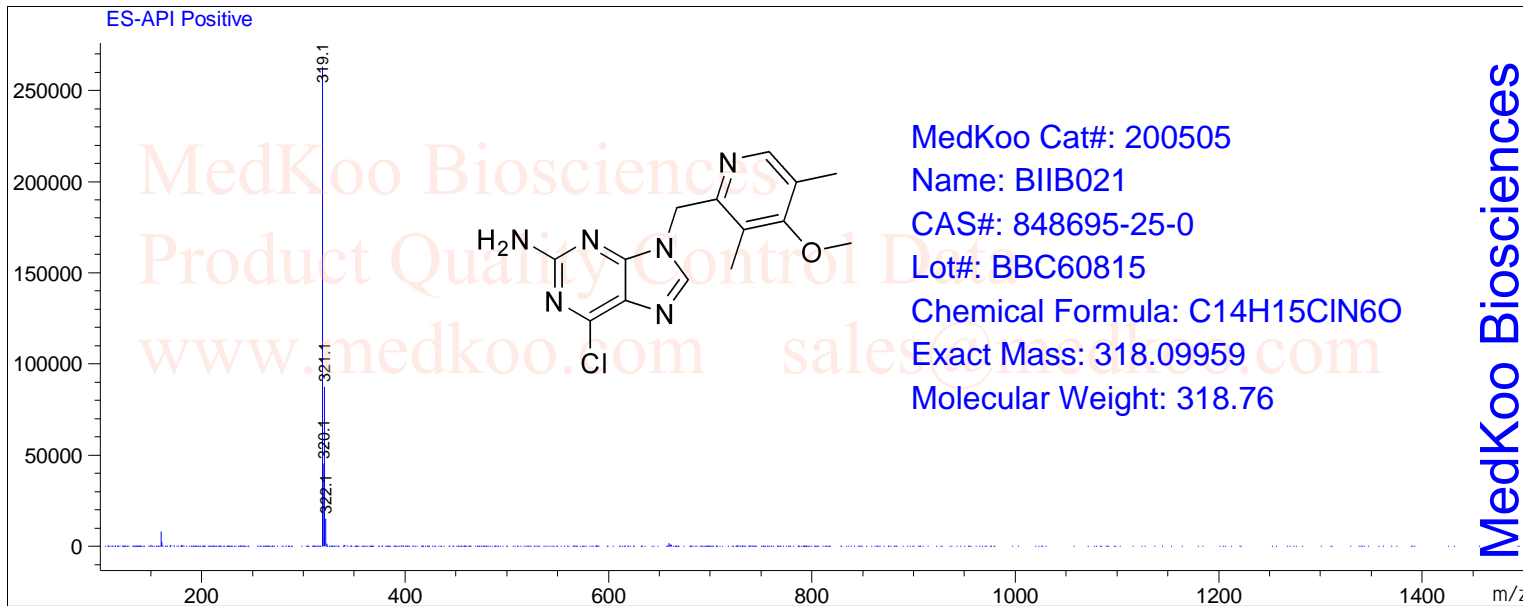
sales@medkoo.com



www.medkoo.com

Ret. Time: 3.30

<<<< POSITIVE SPECTRA >>>>



MedKoo Biosciences