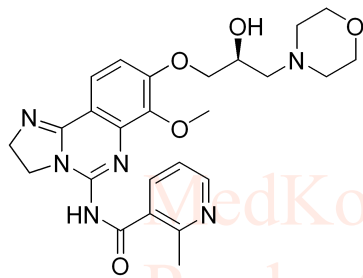


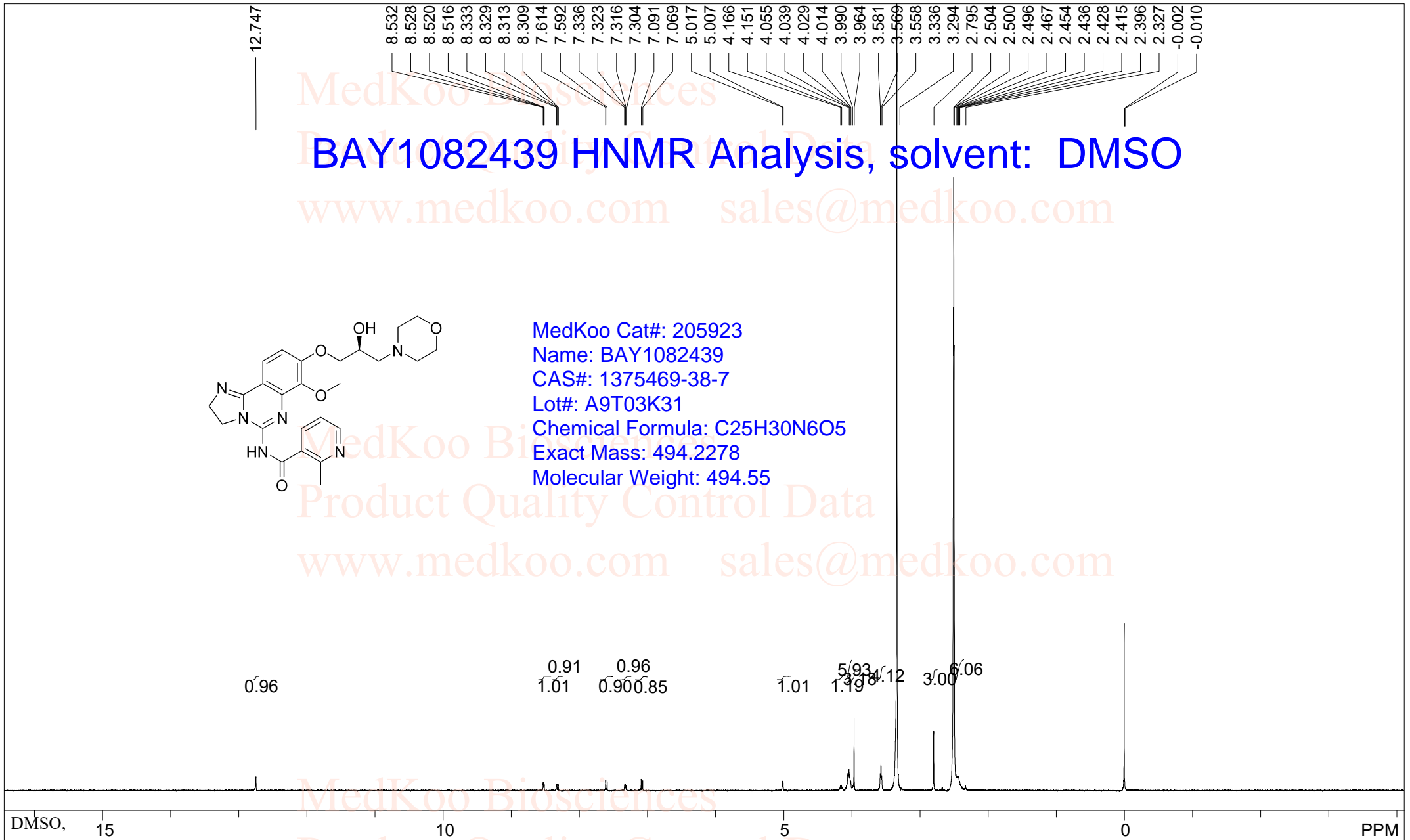
BAY1082439 HNMR Analysis, solvent: DMSO

www.medkoo.com sales@medkoo.com



MedKoo Cat#: 205923
Name: BAY1082439
CAS#: 1375469-38-7
Lot#: A9T03K31
Chemical Formula: C₂₅H₃₀N₆O₅
Exact Mass: 494.2278
Molecular Weight: 494.55

Product Quality Control Data
www.medkoo.com sales@medkoo.com



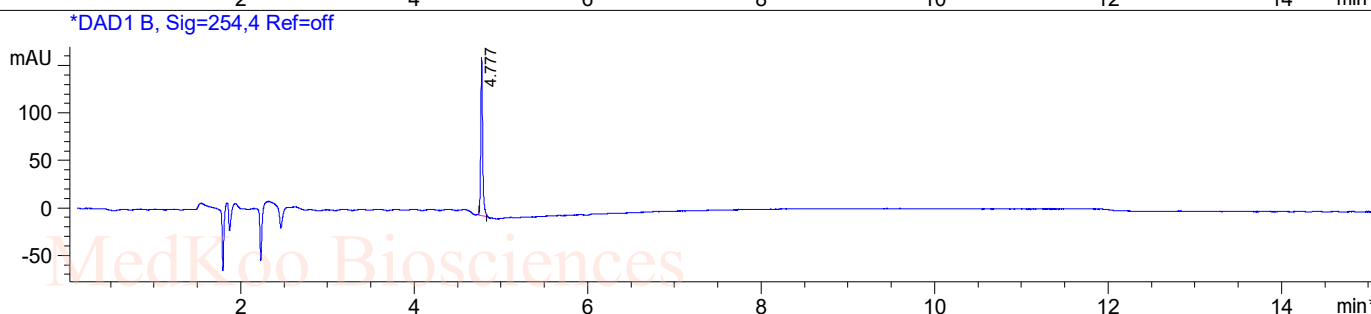
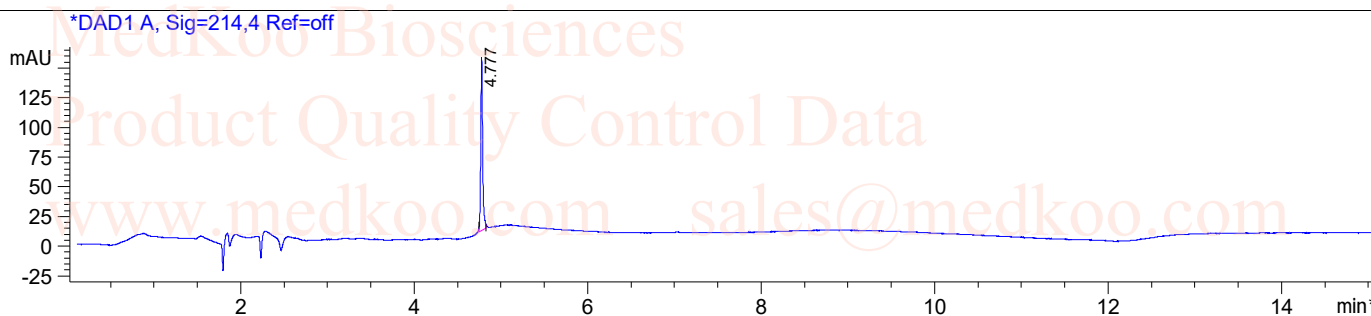
F1: 400.132	F2: 1.000	SW1: 8224	OF1: 2468.1	PTS1d: 65536
EX: zg30	PW: 15.0 usec	PD: 1.0 sec	NA: 8	LB: 0.0

BAY1082439 HPLC Analysis

Sample Name : 1375469-38-7

Sample Info : Easy-Access Method: '2-POS-15MIN'

Method Info : Mobile Phase : A:water(0.01%TFA) B:ACN(0.01%TFA)
Gradient:5%Bfor 2min,increase to 95%B within 8min,95%B for 5min
Flow Rate :1ml/min
Column :Sunfire C18 150*4.6mm,3.5um
Column Temperature:40C
Detection:UV(214nm,4nm) and MS(ESI,POS Mode,110-1300amu)

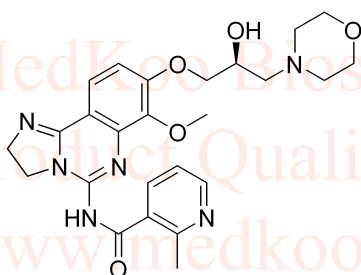


Integration Results for DAD1 A, Sig=214,4 Ref=off

RetTim	Width	Area	Height	Area%
4.78	0.02	218.25	145.66	100.00

Integration Results for DAD1 B, Sig=254,4 Ref=off

RetTim	Width	Area	Height	Area%
4.78	0.02	249.73	167.09	100.00



MedKoo Cat#: 205923

Name: BAY1082439

CAS#: 1375469-38-7

Lot#: A9T03K31

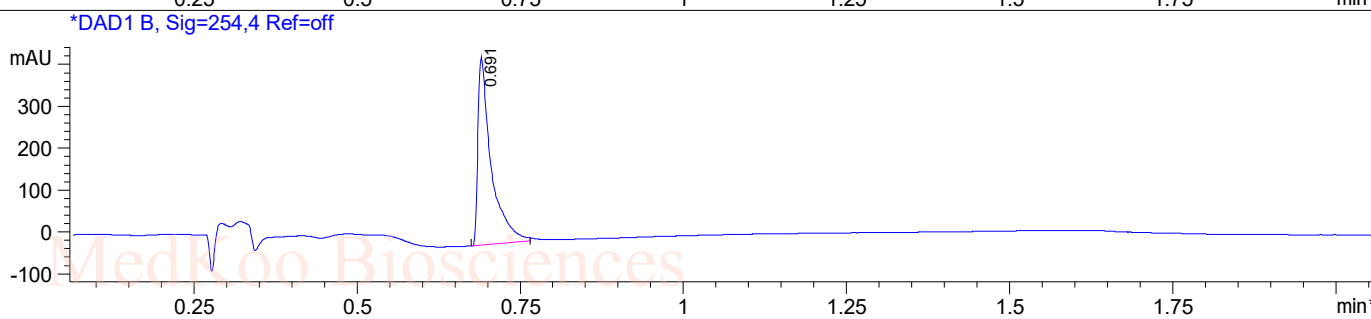
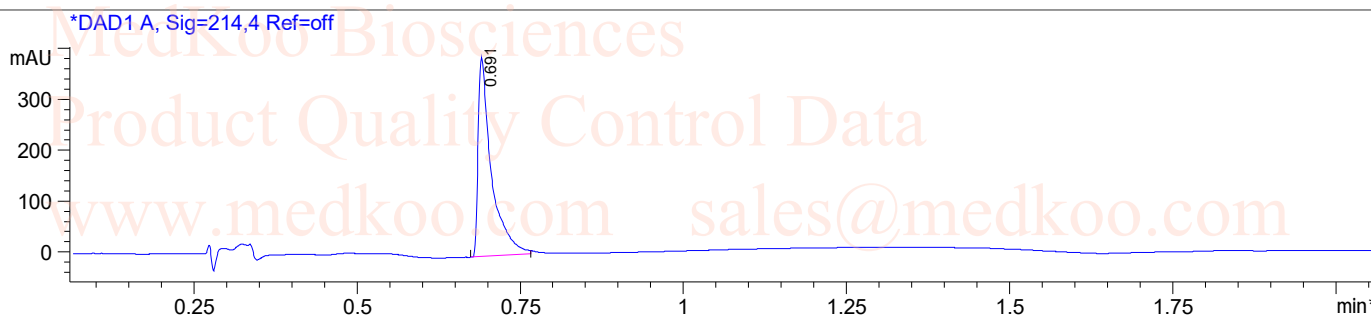
Chemical Formula: C₂₅H₃₀N₆O₅

Exact Mass: 494.2278

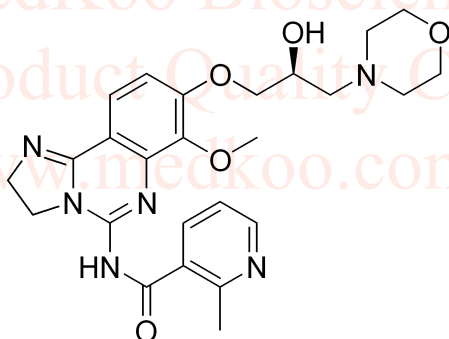
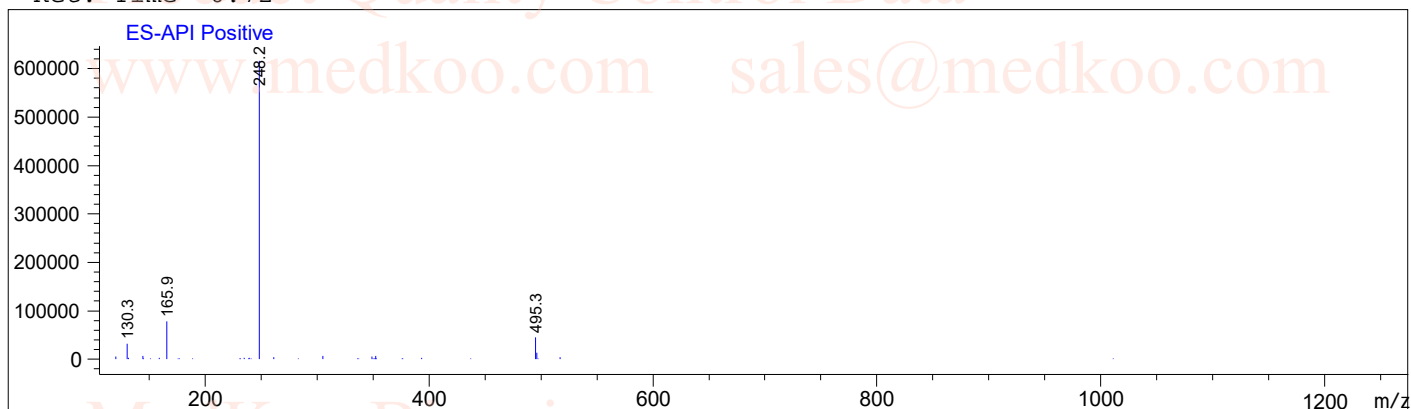
Molecular Weight: 494.55

BAY1082439 LC/MS Analysis

Sample Name : 1375469-38-7
Analysis Method : D:\METHODS\1-POS-3MIN.M
Sample Info : Easy-Access Method: '1-POS-3MIN'
Method Info : Mobile Phase : A:water(0.01%TFA) B:ACN(0.01%TFA)
Gradient:5%B increase to 95%B within 1.2min,95%B for 0.8min
Flow Rate :1.8ml/min
Column :Zorbox SB-C18 30*4.6mm,1.8um
Column Temperature:40C
Detection:UV(214nm,4nm) and MS(ESI, POS Mode,110-1300amu)



Ret. Time: 0.72 <<<< POSITIVE SPECTRA



MedKoo Cat#: 205923
Name: BAY1082439
CAS#: 1375469-38-7
Lot#: A9T03K31
Chemical Formula: C₂₅H₃₀N₆O₅
Exact Mass: 494.2278
Molecular Weight: 494.55