

13.012

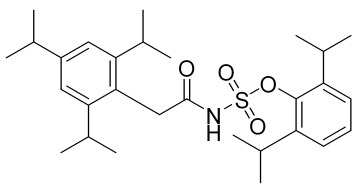
7.305
7.004

3.824
3.442
3.408
3.349
2.990
2.853
2.496

1.236
1.211

Avasimibe HNMR Analysis, Solvent = DMSO-d6

www.medkoo.com sales@medkoo.com



MedKoo Cat#: 406842
Name: Avasimibe
CAS#: 166518-60-1
Lot#: XPR70327
Chemical Formula: C29H43NO4S
Exact Mass: 501.29128
Molecular Weight: 501.72

MedKoo Biosciences
Product Quality Control Data
www.medkoo.com sales@medkoo.com

0.91

3.04
2.01

2.00
2.11
2.09

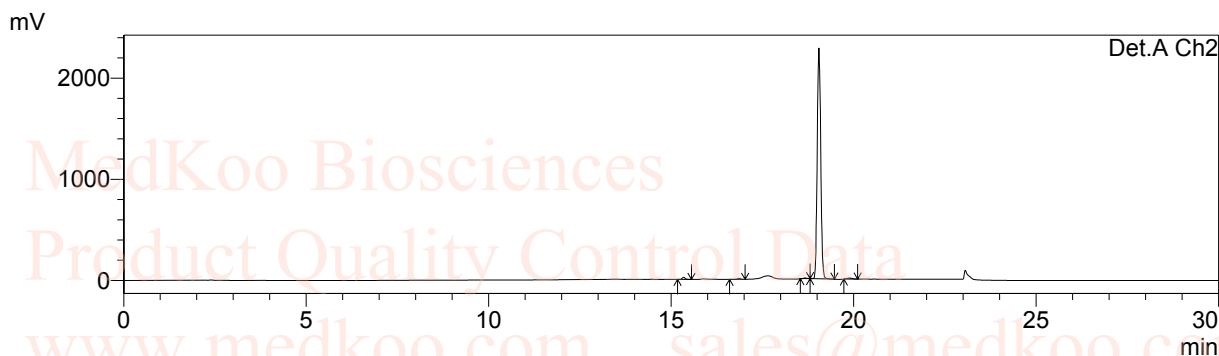
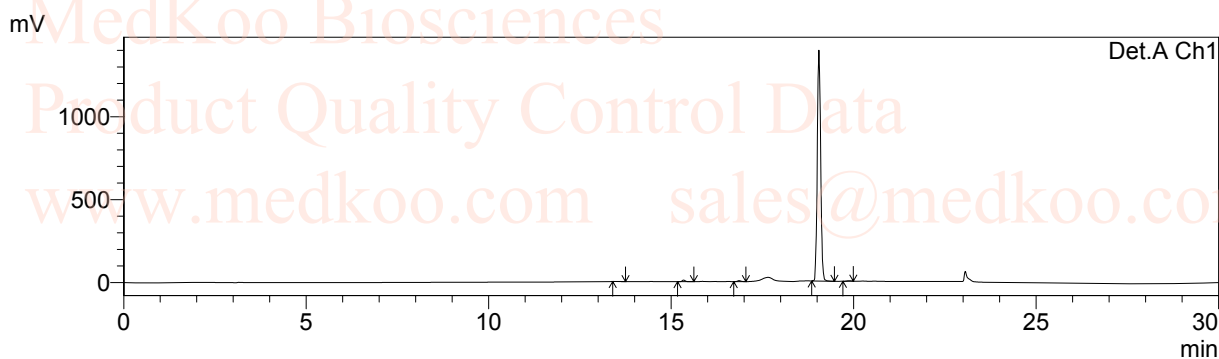
30.42

MedKoo Biosciences
Product Quality Control Data
www.medkoo.com sales@medkoo.com

Avasimibe HPLC Analysis

Column : Wondasil C18-WR, 5um 4.6*150mm
 Mobile phase : Solvent A: H2O(0.05%H3PO4) Solvent B:ACN(0.05%H3PO4)
 Temperature : 35 °C
 Flow rate : 0.8mL/min
 Run time : 15min gradient(10-95%)B, then 5min gradient 95%B,then 10min gradient (95-10%)B
 Detector : UV
 Wavelength : 210/220 nm
 User name : ZJB
 Notebook page :
 Sample description : in ACN
 Injection Volume : 5 uL

Data File Name : 166518-60-1.lcd
 Method File Name : 166518-60-1.lcm

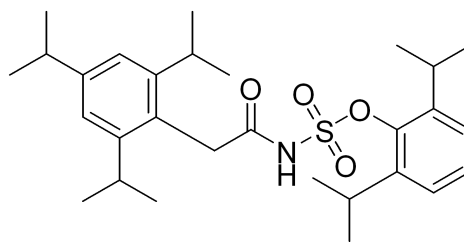


1 Det.A Ch1/220nm
 2 Det.A Ch2/210nm

PeakTable

Detector A Ch1 220nm

Peak#	Ret. Time	Area	Area %	Theoretical Plate#
1	13.483	8082	0.089	38034.591
2	15.338	53573	0.587	136246.483
3	16.858	32665	0.358	166041.845
4	19.044	9011680	98.759	174551.035
5	19.867	18935	0.208	132552.485
Total		9124935	100.000	



PeakTable

Detector A Ch2 210nm

Peak#	Ret. Time	Area	Area %	Theoretical Plate#
1	15.338	118680	0.759	135180.638
2	16.857	58154	0.372	156798.947
3	18.667	43116	0.276	169658.255
4	19.045	15325432	97.993	164814.797
5	19.885	93854	0.600	89253.938
Total		15639236	100.000	

MedKoo Cat#: 406842

Name: Avasimibe

CAS#: 166518-60-1

Lot#: XPR70327

Chemical Formula: C29H43NO4S

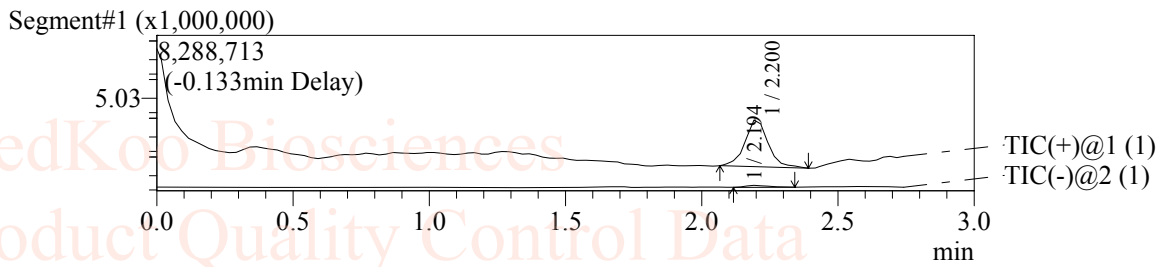
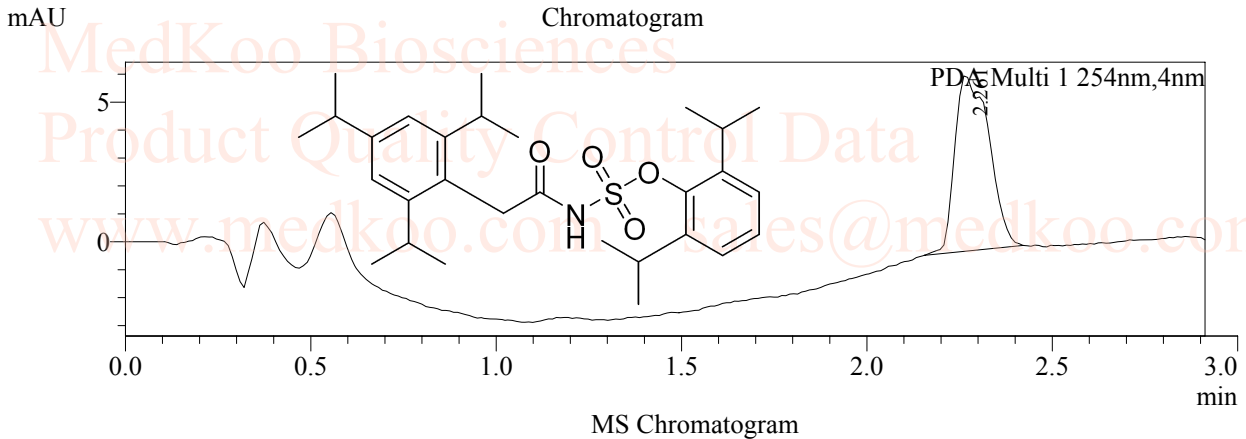
Exact Mass: 501.29128

Molecular Weight: 501.72

Avasimibe LC/MS Analysis

LC-MS condition

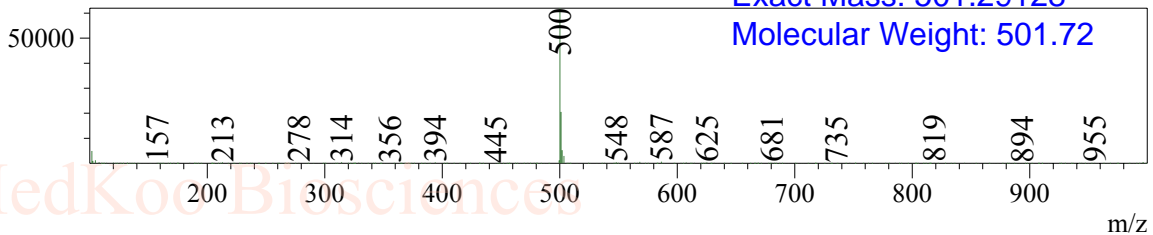
Column : Chromolith SpeedROD ,RP-18e,50*4.6mm
Mobile Phase : A: H2O/CH3CN/FA=90/10/0.05
B: CH3CN/H2O/FA=90/10/0.05
Temperature : 35°C
Flow rate : 3mL/min
Run time : 0.4min@20%B,1.4min gradient(20-95% B), then0.4min@95% B
Injection volume : 10 uL
Mass range : 100-1000
Scan : Postive/Negative



MS Spectrum

Peak#:1 R.Time:2.194(Scan#:180)
MassPeaks:409
Spectrum Mode:Averaged 2.175-2.225(178-182)
BG Mode:Calc Segment 1 - Event 2

MedKoo Cat#: 406842
Name: Avasimibe
CAS#: 166518-60-1
Lot#: XPR70327
Chemical Formula: C₂₉H₄₃NO₄S
Exact Mass: 501.29128
Molecular Weight: 501.72



Peak#:1 R.Time:2.200(Scan#:179)
MassPeaks:474
Spectrum Mode:Averaged 2.167-2.217(177-181)
BG Mode:Calc Segment 1 - Event 1

