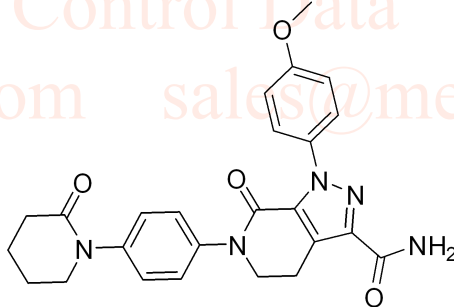
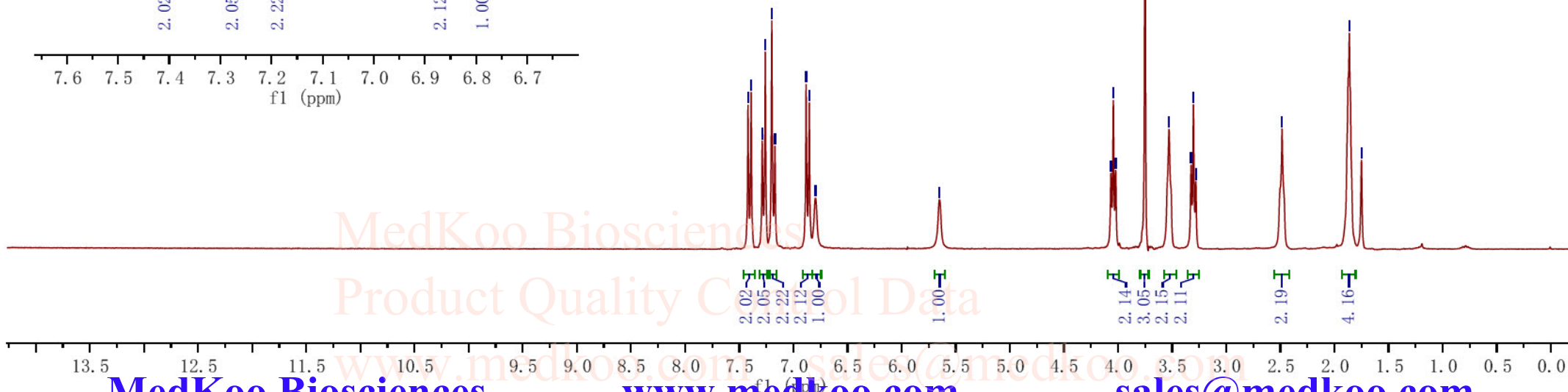
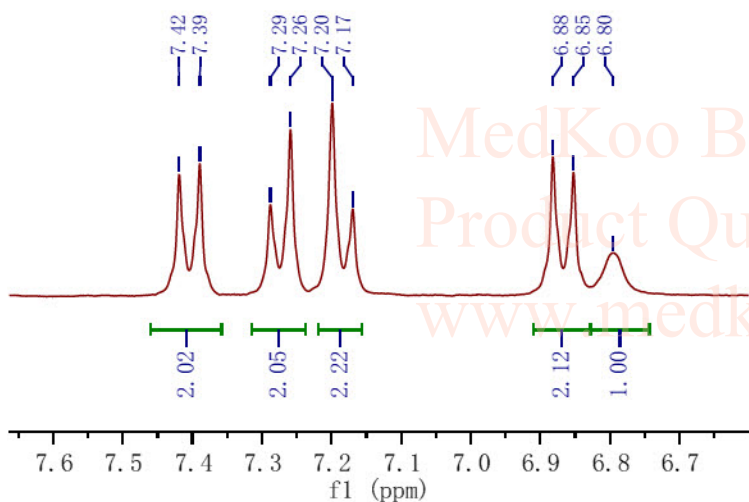


# Apixaban HNMR Analysis, Solvent = CDCl3

MedKoo Biosciences  
Product Quality Control Data  
www.medkoo.com sales@medkoo.com

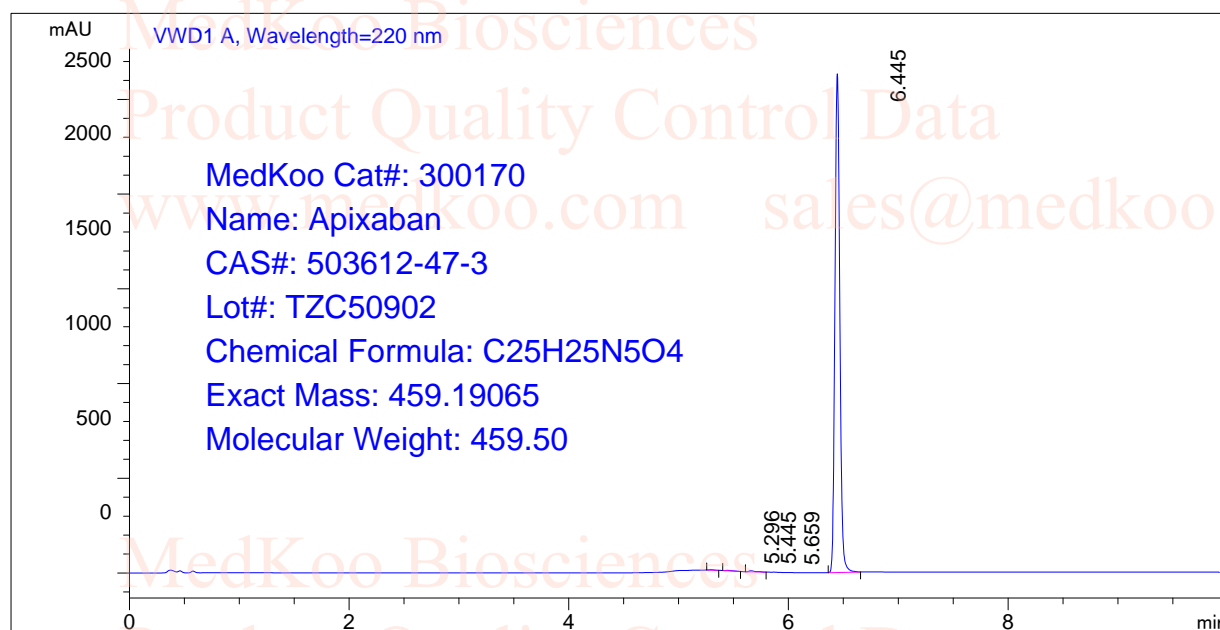


MedKoo Cat#: 300170  
Name: Apixaban  
CAS#: 503612-47-3  
Lot#: TZC50902  
Chemical Formula: C<sub>25</sub>H<sub>25</sub>N<sub>5</sub>O<sub>4</sub>  
Exact Mass: 459.19065  
Molecular Weight: 459.50



# Apixaban HPLC Analysis

=====  
Acq. Operator : 1  
Acq. Instrument : Instrument 1 Location : Vial 1  
Sample Name : 150902 503612-47-3  
Acq. Method : D:\CHEM32\  
Analysis Method : D:\CHEM32\  
Sample Info : A = ACN, B = 0.1% H3PO4/H2O] 0% A/B 2 min, 0-95% A/B 4 min, 95% A/B 3 min, 95-0% A/B 1 min; Athena C18 (3 µm, 2.1 mm × 100 mm); Flow: 0.4 ml/min, T = 25 °C  
=====



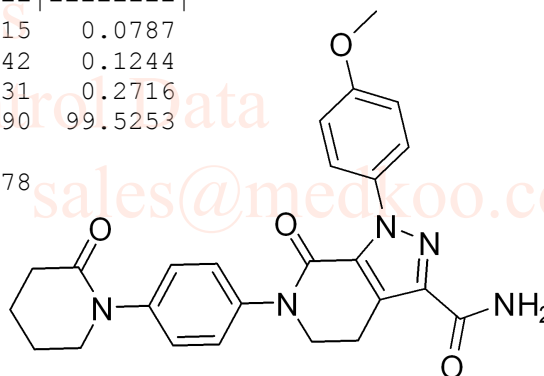
=====  
Area Percent Report  
=====

Sorted By : Signal  
Multiplier: : 1.0000  
Dilution: : 1.0000  
Use Multiplier & Dilution Factor with ISTDs

Signal 1: VWD1 A, Wavelength=220 nm

Peak #	RetTime [min]	Type	Width [min]	Area mAU *s	Height [mAU]	Area %
1	5.296	BB	0.0443	6.43879	2.20415	0.0787
2	5.445	BB	0.0593	10.17664	2.41942	0.1244
3	5.659	BB	0.0531	22.22619	6.15331	0.2716
4	6.445	BB	0.0485	8143.54736	2632.11890	99.5253

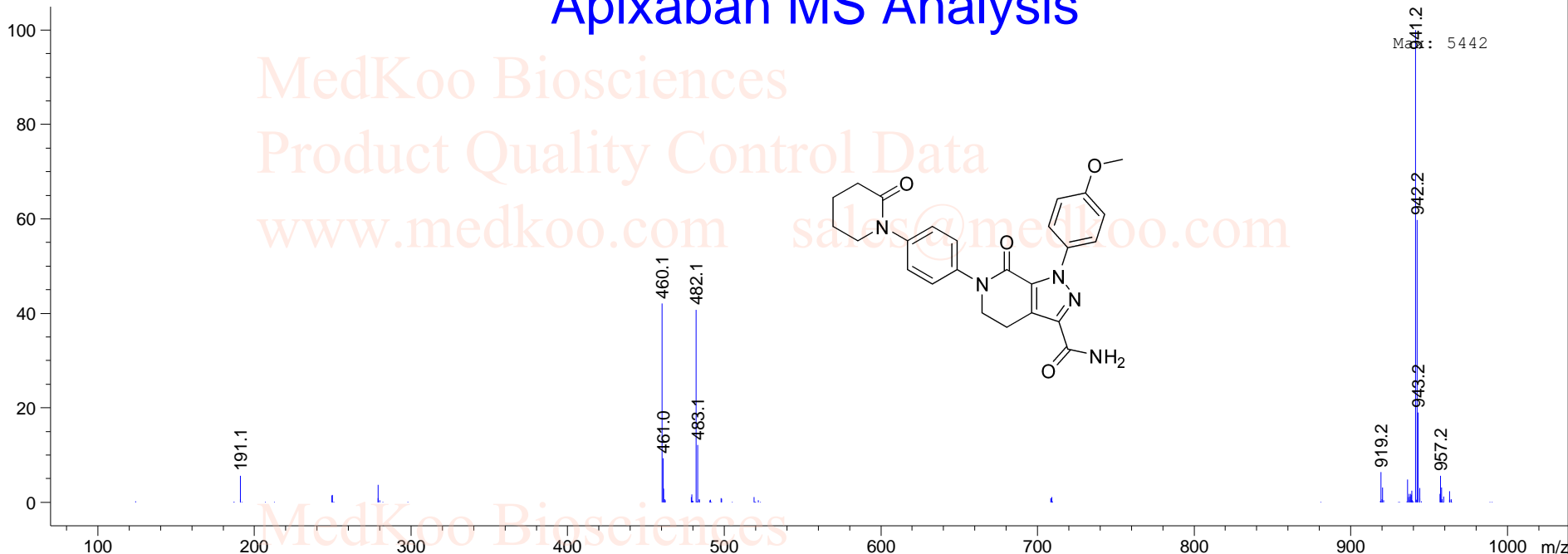
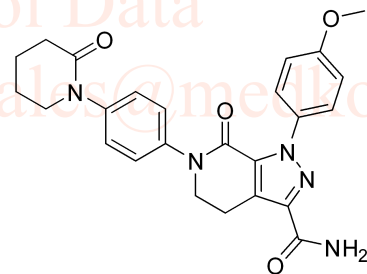
Totals : 8182.38897 2642.89578



\*MSD1 SPC, MM-ES+APCI, Pos, Scan, Frag: 70

# Apixaban MS Analysis

MedKoo Biosciences  
Product Quality Control Data  
www.medkoo.com sales@medkoo.com



\*MSD2 SPC, MM-ES+APCI, Neg, Scan, Frag: 70

MedKoo Biosciences  
Product Quality Control Data  
www.medkoo.com sales@medkoo.com

MedKoo Cat#: 300170  
Name: Apixaban  
CAS#: 503612-47-3  
Lot#: TZC50902  
Chemical Formula: C<sub>25</sub>H<sub>25</sub>N<sub>5</sub>O<sub>4</sub>  
Exact Mass: 459.19065  
Molecular Weight: 459.50

Max: 2060

