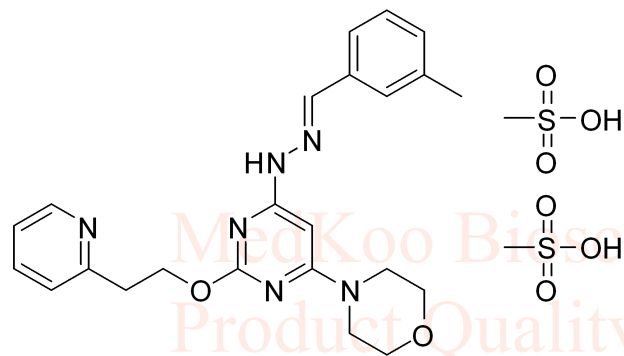


# Apilimod mesylate HNMR Analysis in DMSO



MedKoo Cat#: 407105

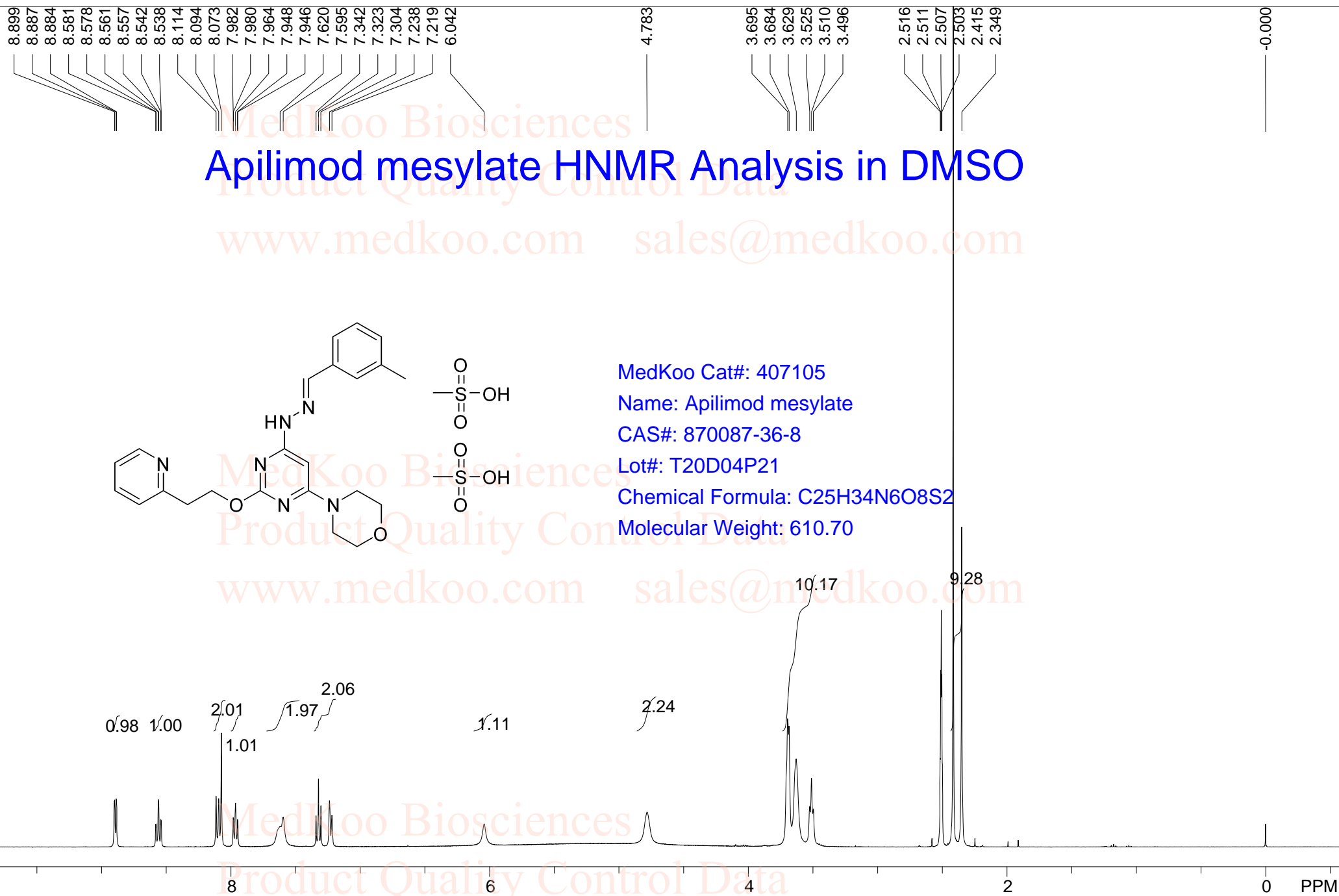
Name: Apilimod mesylate

CAS#: 870087-36-8

Lot#: T20D04P21

Chemical Formula: C<sub>25</sub>H<sub>34</sub>N<sub>6</sub>O<sub>8</sub>S<sub>2</sub>

Molecular Weight: 610.70



NMRB003, DMSO,

F1: 400.232

F2: 1.000

SW1: 8224

OF1: 2474.8

PTS1d: 32768

EX: zg30

Acq: 1.00 sec

PD: 1.00 sec

www.medkoo.com

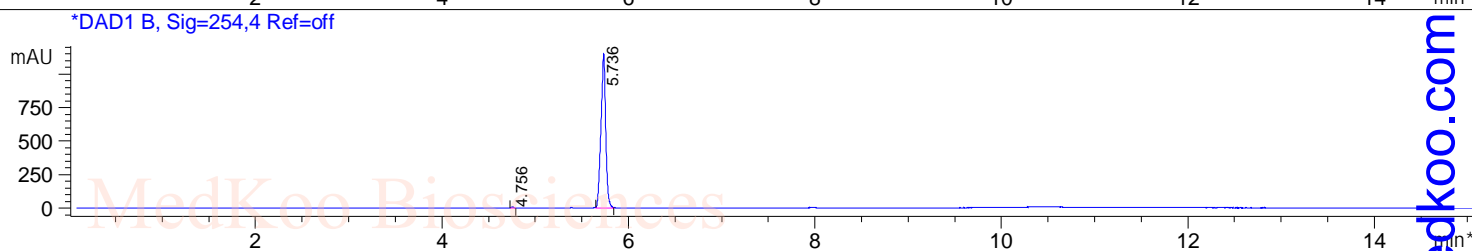
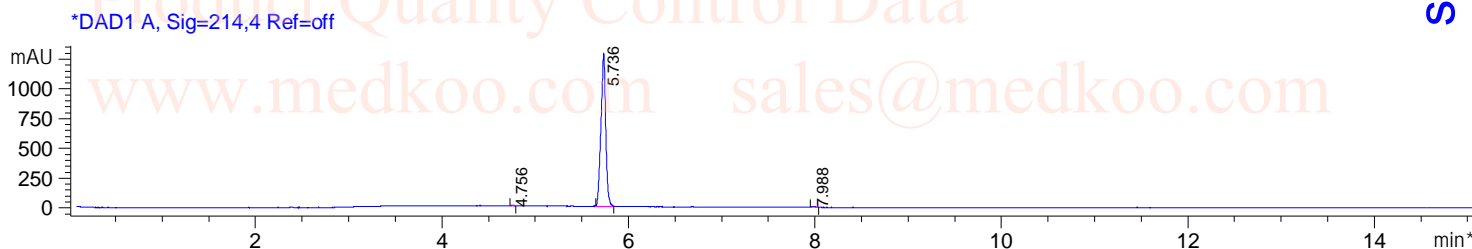
LB: 0.0

sales@medkoo.com

Nuts - \$pdata

# Apilimod mesylate HPLC Analysis

**Sample Name** : Apilimodmesylate **Location** : P1-B-02  
**Acq. Operator** : **Inj** : 1  
**Spec. Reported** : MS Integration **Inj Volume** : 3 ul  
**Acq. Method** : D:\METHODS\1-POS-15MIN.M  
**Analysis Method** : D:\METHODS\1-POS-15MIN.M  
**Sample Info** : Easy-Access Method: '1-POS-15MIN.M'  
**Method Info** : Mobile Phase: A: water(0.01%TFA) B: ACN(0.01%TFA)  
**Gradient**: 5%B increase to 95%B within 8.0 min, 95%B for 7.0 min.  
**Flow Rate**: 1.0ml/min  
**Column**: Sunfire C18, 4.6\*150mm, 3.5um  
**Column Temperature**: 40 C  
**Detection**: UV(214,4nm) and MS(ESI, Pos mode, 110 to 1500 amu)



Integration Results for DAD1 A, Sig=214,4 Ref=off

RetTim	Width	Area	Height	Area%
4.76	0.02	11.02	7.40	0.24
5.74	0.05	4545.00	1285.70	99.44
7.99	0.03	14.66	6.71	0.32

Integration Results for DAD1 B, Sig=254,4 Ref=off

RetTim	Width	Area	Height	Area%
4.76	0.02	14.90	10.16	0.37
5.74	0.05	4043.23	1151.82	99.63



MedKoo Cat#: 407105

Name: Apilimod mesylate

CAS#: 870087-36-8

Lot#: T20D04P21

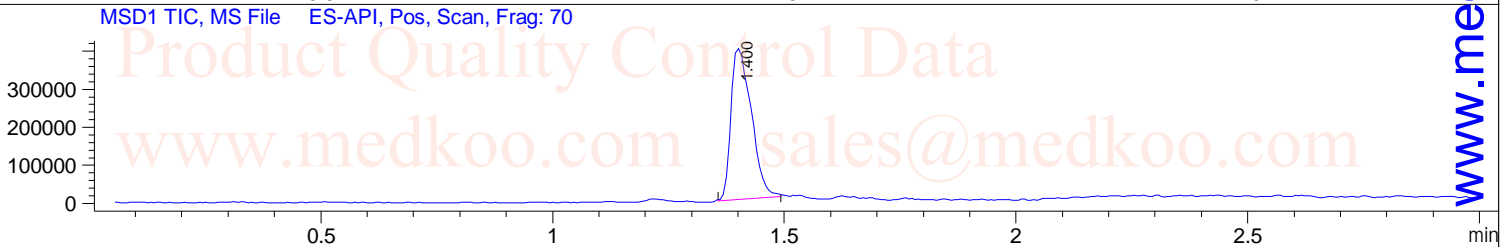
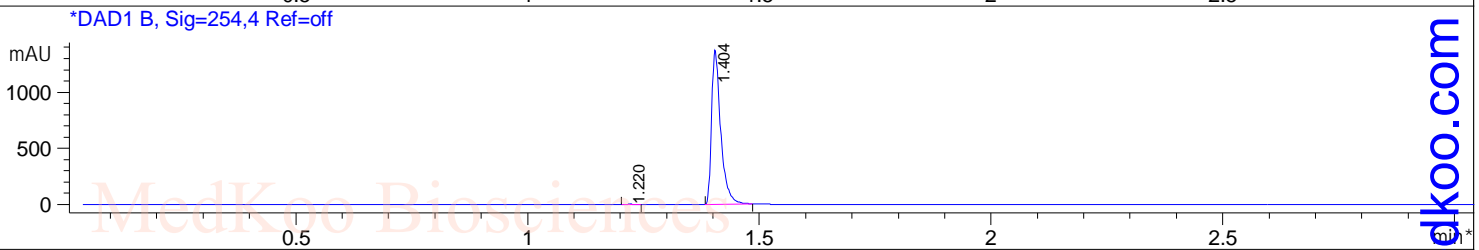
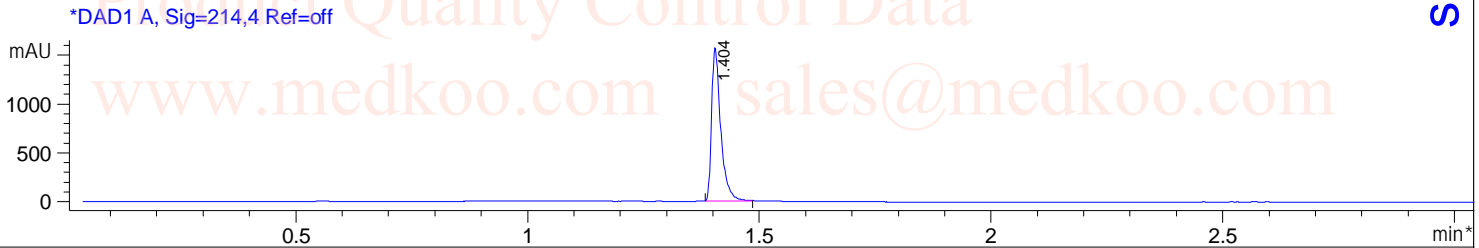
Chemical Formula: C<sub>25</sub>H<sub>34</sub>N<sub>6</sub>O<sub>8</sub>S<sub>2</sub>

Molecular Weight: 610.70

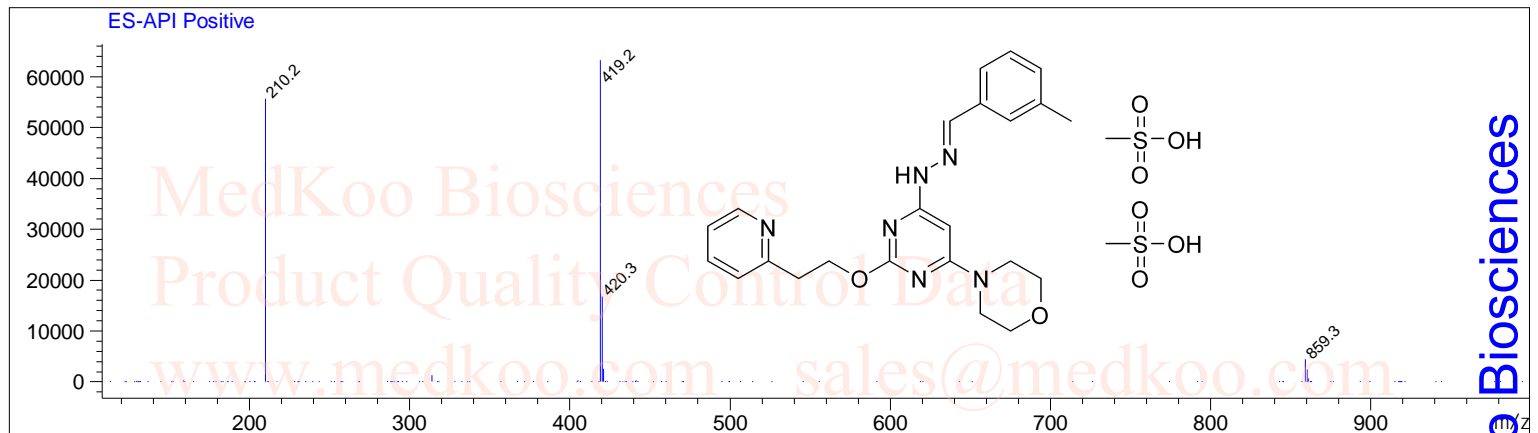
# Apilimod mesylate LC/MS Analysis

Sample Name : Apilimodmesylate  
Acq. Operator :  
Spec. Reported : MS Integration  
Acq. Method : D:\METHODS\1-POS-3MIN.M  
Analysis Method : D:\METHODS\1-POS-3MIN.M  
Sample Info : Easy-Access Method: '1-POS-3MIN.M'  
Method Info : Mobile Phase: A: water(0.01%TFA) B: ACN(0.01%TFA)  
Gradient: 5%B increase to 95%B within 1.3 min, 95%B for 1.7 min.  
Flow Rate: 2.0ml/min  
Column: Sunfire C18, 4.6\*50mm, 3.5um  
Column Temperature: 50 C  
Detection: UV(214,4nm) and MS(ESI, Pos mode, 110 to 1000 amu)

Tgt Mass(EZX) :  
Location : P1-B-01  
Inj : 1  
Inj Volume : 3 ul



Ret. Time: 1.40 <<<< POSITIVE SPECTRA >>>>



MedKoo Cat#: 407105

Name: Apilimod mesylate

CAS#: 870087-36-8

Lot#: T20D04P21

Chemical Formula: C<sub>25</sub>H<sub>34</sub>N<sub>6</sub>O<sub>8</sub>S<sub>2</sub>

Molecular Weight: 610.70

sales@medkoo.com

www.medkoo.com

MedKoo Biosciences