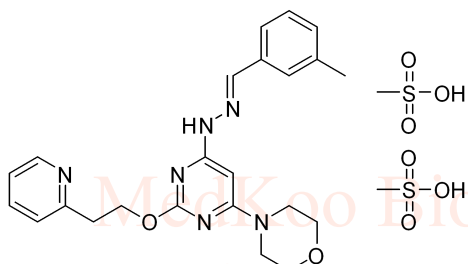




Apilimod mesylate ¹H NMR Analysis, Solvent:DMSO

www.medkoo.com sales@medkoo.com



MedKoo Cat#: 407105

Name: Apilimod mesylate

CAS#: 870087-36-8 (mesylate)

Lot#: A20T09K29

Chemical Formula: C₂₅H₃₄N₆O₈S₂

Molecular Weight: 610.70

Product Quality Control Data
www.medkoo.com sales@medkoo.com



Product Quality Control Data
www.medkoo.com sales@medkoo.com

DMSO

F1: 400.130

F2: 1.000

SW1: 8224

OF1: 2469.8

PTS1d: 32768

EX: zg30

MedKoo Biosciences

www.medkoo.com

PD: www.medkoo.com

www.medkoo.com

LB: 0.3

sales@medkoo.com

Apilimod mesylate HPLC Analysis

Sample Name : 870087-36-8

Method Info : Mobile Phase: A: water(0.01%TFA) B: ACN(0.01%TFA)

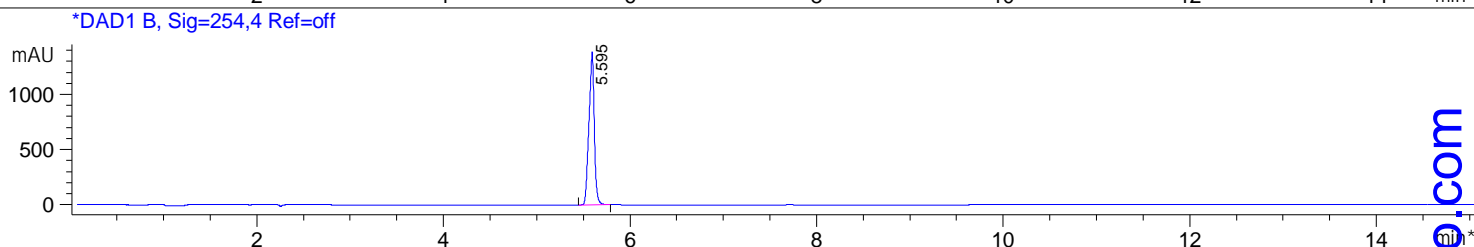
Gradient: 5% increase to 95%B within 7.5 min, 95%B for 7.5 min.

Flow Rate: 1.0ml/min

Column:Sunfire C18,4.6*150mm,3.5um

Column Temperature: 45 C

Detection:UV(214,4nm) and MS(ESI,Pos mode,110 to 1500 amu)

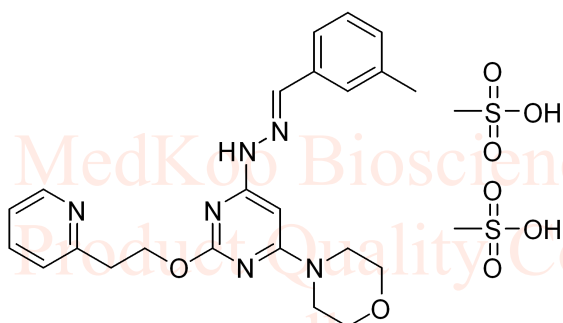


Integration Results for DAD1 A, Sig=214,4 Ref=off

RetTim	Width	Area	Height	Area%
2.24	0.02	44.87	25.39	0.75
5.59	0.06	5963.01	1490.71	99.25

Integration Results for DAD1 B, Sig=254,4 Ref=off

RetTim	Width	Area	Height	Area%
5.59	0.06	5500.46	1388.95	100.00



MedKoo Cat#: 407105

Name: Apilimod mesylate

CAS#: 870087-36-8 (mesylate)

Lot#: A20T09K29

Chemical Formula: C₂₅H₃₄N₆O₈S₂

Molecular Weight: 610.70

Apilimod mesylate LC/MS Analysis

Sample Name : :922:9/58/:

Method Info : Mobile Phase: A: water(0.01%TFA) B: ACN(0.01%TFA)

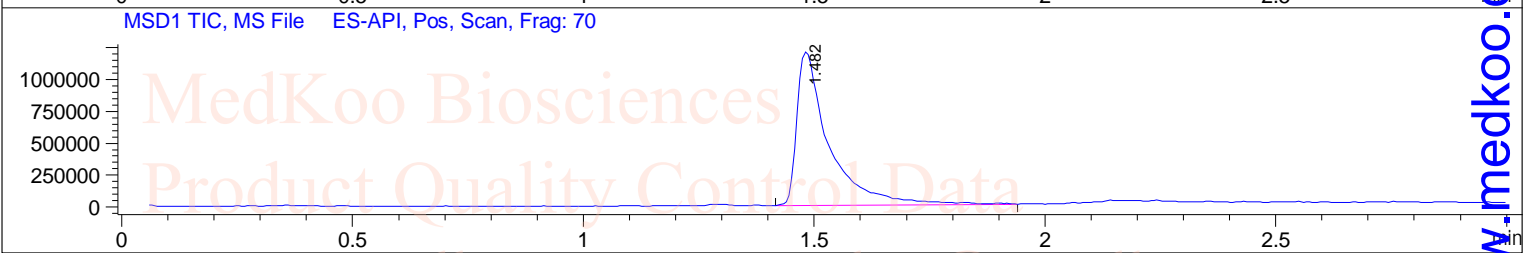
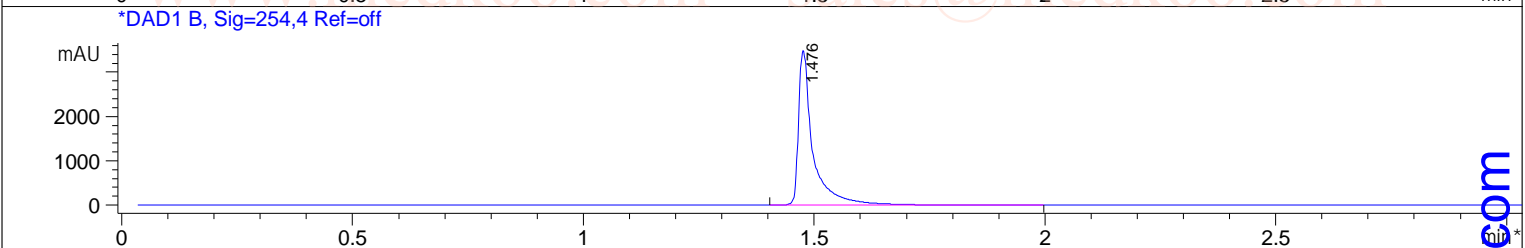
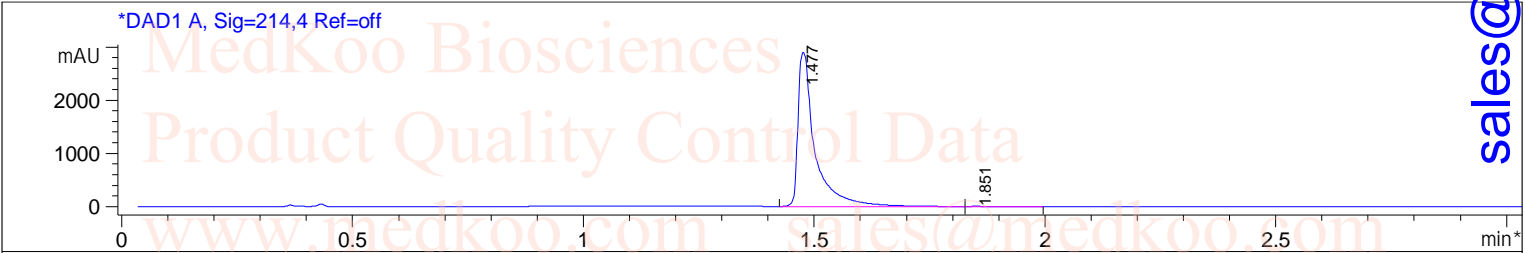
Gradient: 5% increase to 95%B within 1.3 min, 95%B for 1.7 min.

Flow Rate: 2.0ml/min

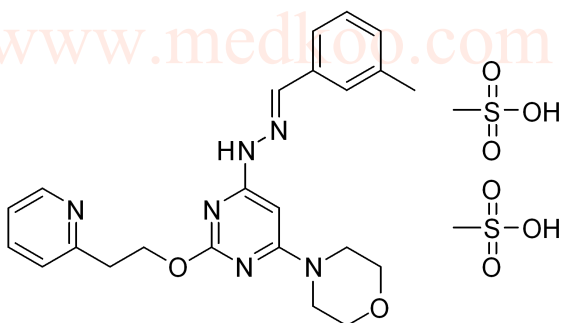
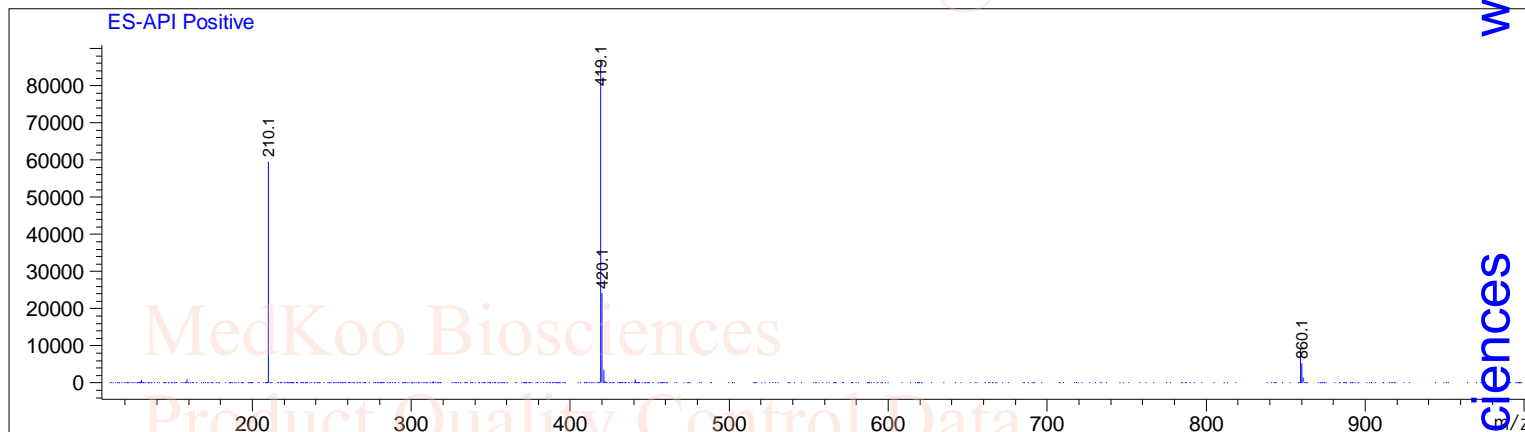
Column:Sunfire C18,4.6*50mm,3.5um

Column Temperature: 45 C

Detection:UV(214,4nm) and MS(ESI,Pos mode,110 to 1000 amu)



Ret. Time: 1.48 <<<< POSITIVE SPECTRA >>>>



MedKoo Cat#: 407105

Name: Apilimod mesylate

CAS#: 870087-36-8 (mesylate)

Lot#: A20T09K29

Chemical Formula: C₂₅H₃₄N₆O₈S₂

Molecular Weight: 610.70

sales@medkoo.com

www.medkoo.com

MedKoo Biosciences