

MedKoo Cat#: 317130

Name: AdipoRon

CAS#: 924416-43-3

Lot#: A20T10K15

Chemical Formula: C27H28N2O3

Exact Mass: 428.20999

Molecular Weight: 428.52

F1: 400.130

F2: 1.000

SW1: 8224

OF1: 2470.3

65536

EX: zg30

PD: 0 usec

LB: 0.3

www.medkoo.com

Sales@medkoo.com

AdipoRon LC/MS Analysis

Sample Name : 924416-43-3

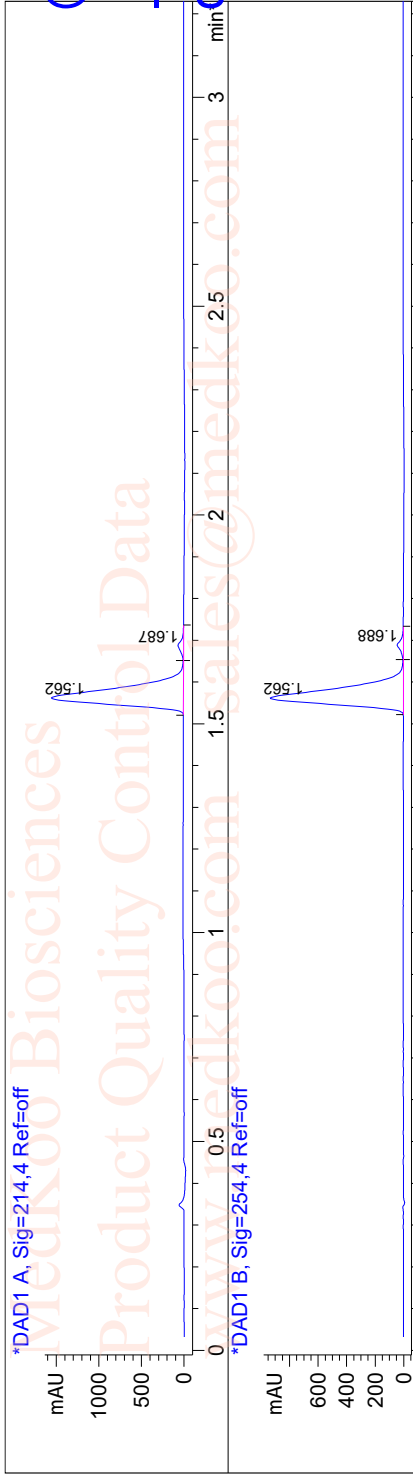
Method Info : Mobile Phase : A:water(0.01%TFA) B:ACN(0.01%TFA)

Gradient:5% increase to 95%B within 1.3min,95%B for 1.7min
Flow Rate :2ml/min

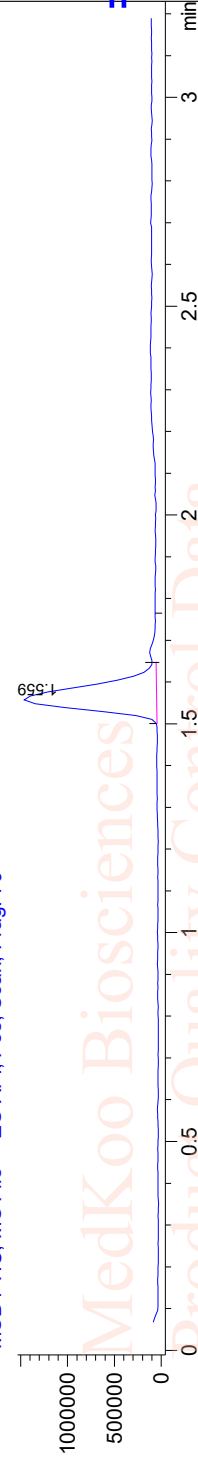
Column :Sunfire, 50*4.6mm,3.5um

Column Temperature:50C

Detection:UV(214,4nm) and MS(ESI,Pos mode,110 to 1000 amu)



MSD1 TIC, MS File ES-API, Pos, Scan, Frag: 70



Integration Results for DAD1 A, Sig=214,4 Ref=off

RetTime	Width	Area	Height	Area%
1.56	0.04	4052.35	1551.31	97.11
1.69	0.03	120.61	66.03	2.89

MedKoo Cat#: 317130

Name: AdipoRon

CAS#: 924416-43-3

Lot#: A20T10K15

Chemical Formula: C27H28N2O3

Exact Mass: 428.20999

Molecular Weight: 428.52

Integration Results for DAD1 B, Sig=254,4 Ref=off

RetTime	Width	Area	Height	Area%
1.56	0.04	2373.50	933.66	97.04
1.69	0.02	72.28	43.02	2.96

Ret. Time: 1.56 <<<< POSITIVE SPECTRA >>>>

ES-API Positive

