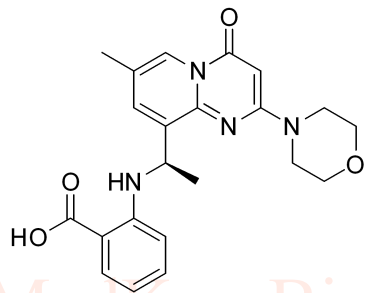


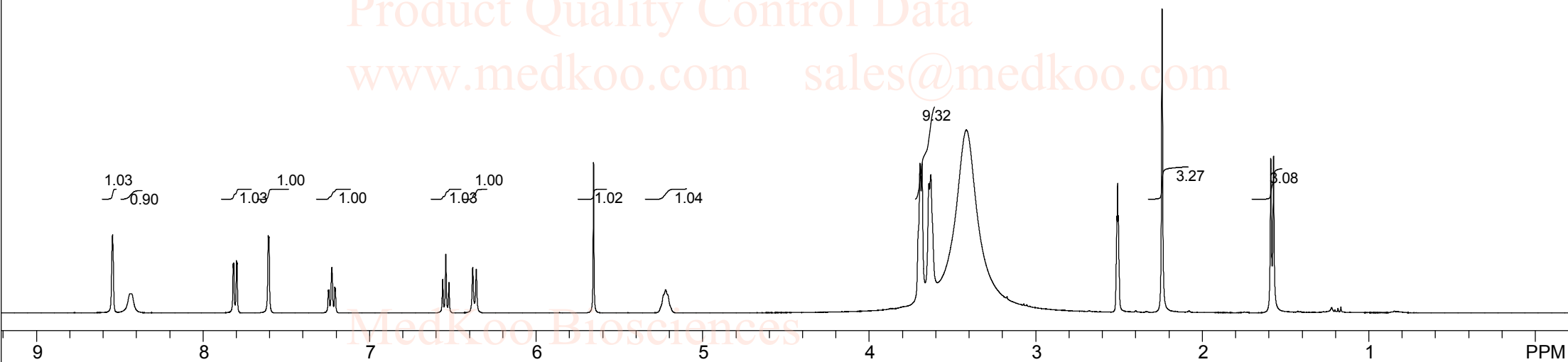
# AZD6482 HNMR Analysis in DMSO

MedKoo Biosciences  
 Product Quality Control Data  
[www.medkoo.com](http://www.medkoo.com) [sales@medkoo.com](mailto:sales@medkoo.com)



MedKoo Cat#: 406268  
 Name: AZD6482  
 CAS#: 1173900-33-8 (free base)  
 Lot#: SSC30819  
 Chemical Formula: C<sub>22</sub>H<sub>24</sub>N<sub>4</sub>O<sub>4</sub>  
 Exact Mass: 408.17976  
 Molecular Weight: 408.45

MedKoo Biosciences  
 Product Quality Control Data  
[www.medkoo.com](http://www.medkoo.com) [sales@medkoo.com](mailto:sales@medkoo.com)



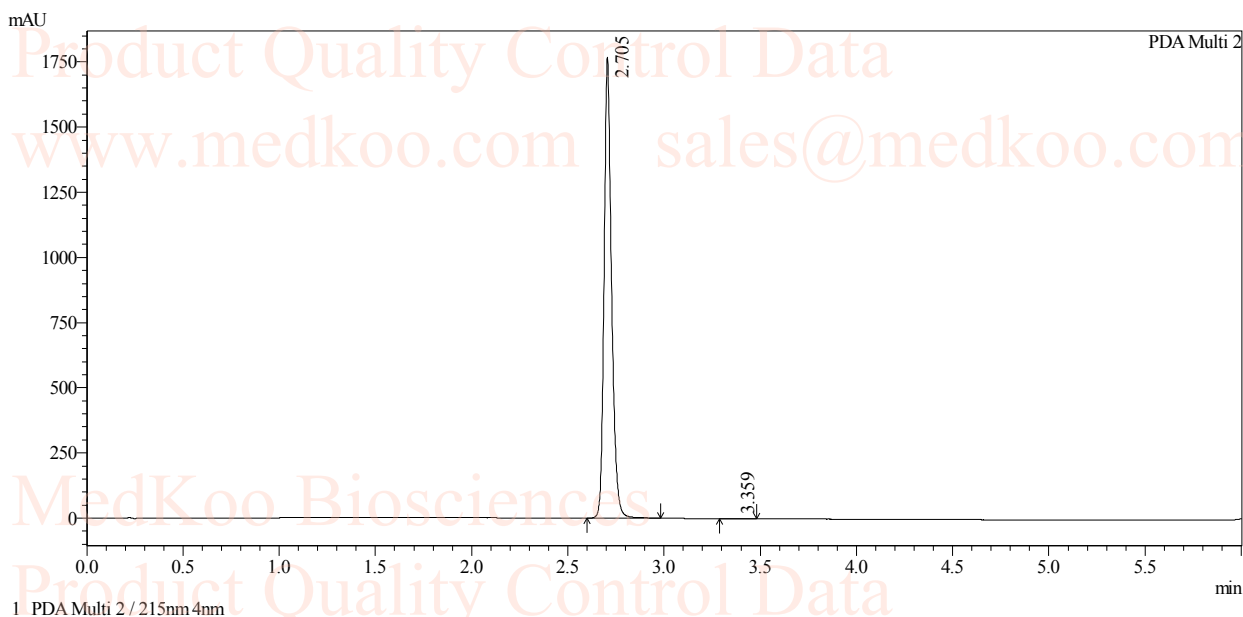
MedKoo Biosciences  
 Product Quality Control Data  
[www.medkoo.com](http://www.medkoo.com) [sales@medkoo.com](mailto:sales@medkoo.com)

AZD-6482 DMSO-d6 400MHz, ,							
F1: 400.130	F2: 1.000	SW1: 8224	OF1: 2471.0	PTS1d: 65536			
EX: zg30	PW: 13.7 usec	PD: 1.0 sec	NA: 8	LB: 0.3	Nuts - \$WX00002-YCSW-01288-P-2R_1.1		

# AZD6482 HPLC Analysis

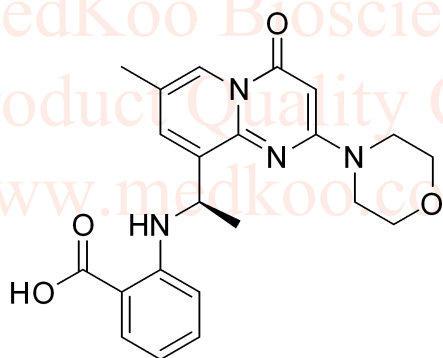
Compound ID : 1  
Sample ID : WX00002-YCSW-01288-P-2R  
Filename : D:\Data\1308\19\WX00002-01288-P-2R\_1.lcd  
Method Name : D:\method\10-80AB\_6min.lcm  
Instrument & Column : HPLC-E Xtimate C18 2.1\*30mm\*3um

MedKoo Biosciences



Integration result

PeakTable						
Peak#	Ret. Time	USP Width	Resolution	Height	Area	Area %
1	2.705	0.072	0.000	1757797	4811954	99.959
2	3.359	0.075	8.928	783	1985	0.041
Total				1758580	4813938	100.000

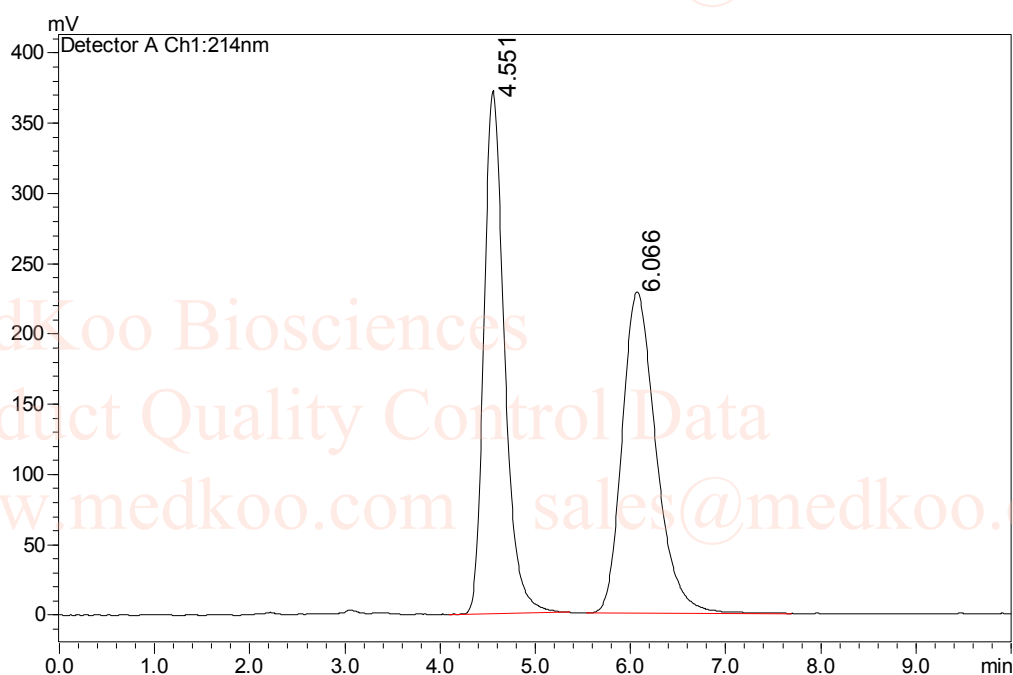


MedKoo Cat#: 406268  
Name: AZD6482  
CAS#: 1173900-33-8 (free base)  
Lot#: SSC30819  
Chemical Formula: C<sub>22</sub>H<sub>24</sub>N<sub>4</sub>O<sub>4</sub>  
Exact Mass: 408.17976  
Molecular Weight: 408.45

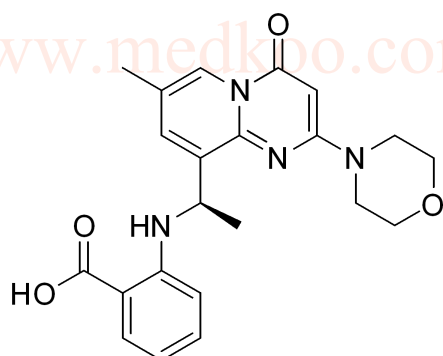
# AZD6482 Chiral HPLC Analysis (Before Separation)

Column	: CHIRALCEL OJ-H
Column size	: 0.46cm I.D. x 15 cm L
Injection	: 0.2 ul
Mobile phase	: MeOH/ACN =90/10(v/v)
Flow rate	: 1.0 ml/min
Wave length	: UV 214nm
Temperature	: 35 °C
Sample solution	: X mg/ml in mobile phase
Sample structure	: Raw Material

Chromatogram



Peak No.	Time	Area	Area %	T Plate	Tailing	Resolution
1	4.551	5578630	49.7349	2188.403	1.332	--
2	6.066	5638108	50.2651	1435.079	1.295	2.942

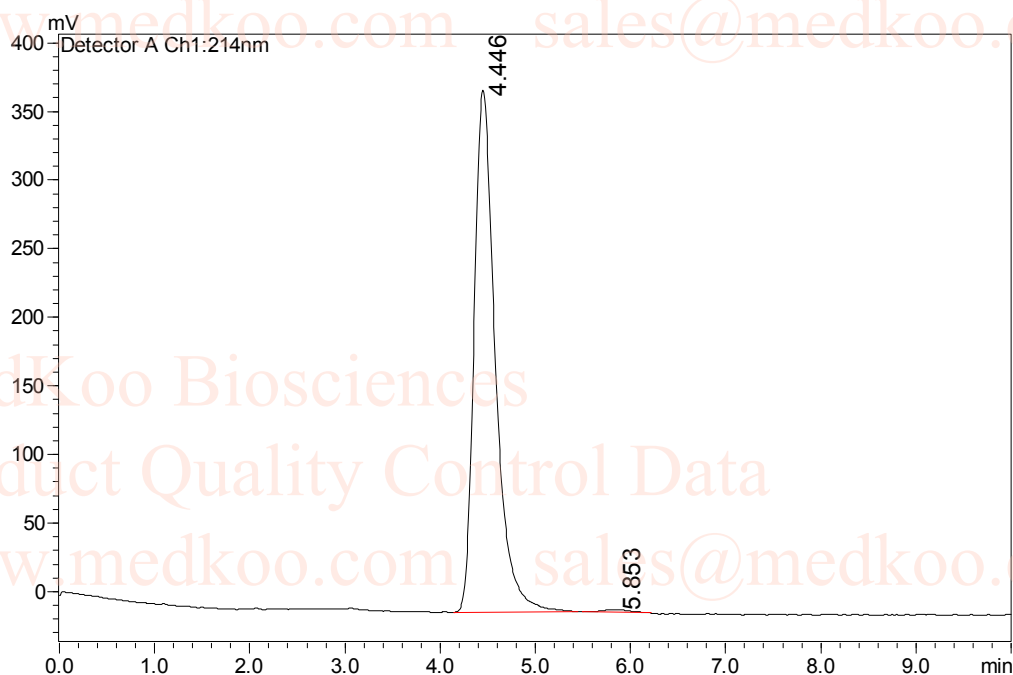


MedKoo Cat#: 406268  
Name: AZD6482  
CAS#: 1173900-33-8 (free base)  
Lot#: SSC30819  
Chemical Formula: C<sub>22</sub>H<sub>24</sub>N<sub>4</sub>O<sub>4</sub>  
Exact Mass: 408.17976  
Molecular Weight: 408.45

# AZD6482 Chiral HPLC Analysis (After Separation)

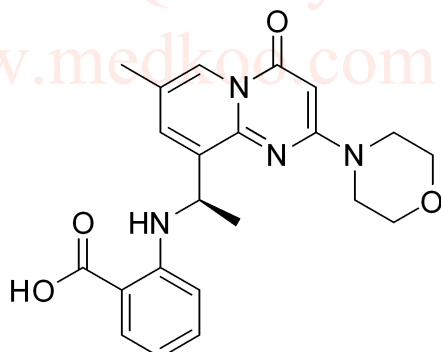
Column	: CHIRALCEL OJ-H
Column size	: 0.46cm I.D. x 15 cm L
Injection	: 3 ul
Mobile phase	: MeOH/ACN =90/10(v/v)
Flow rate	: 1.0 ml/min
Wave length	: UV 214nm
Temperature	: 35 °C
Sample solution	: x mg/ml in mobile phase
Sample structure	: Peak 1

< Chromatogram >



<Column Performance Report>

Peak No.	Time	Area	Area %	T Plate	Tailing	Resolution
1	4.446	5869068	99.3825	2053.776	1.482	--
2	5.853	36464	0.6175	1993.676	1.212	3.069



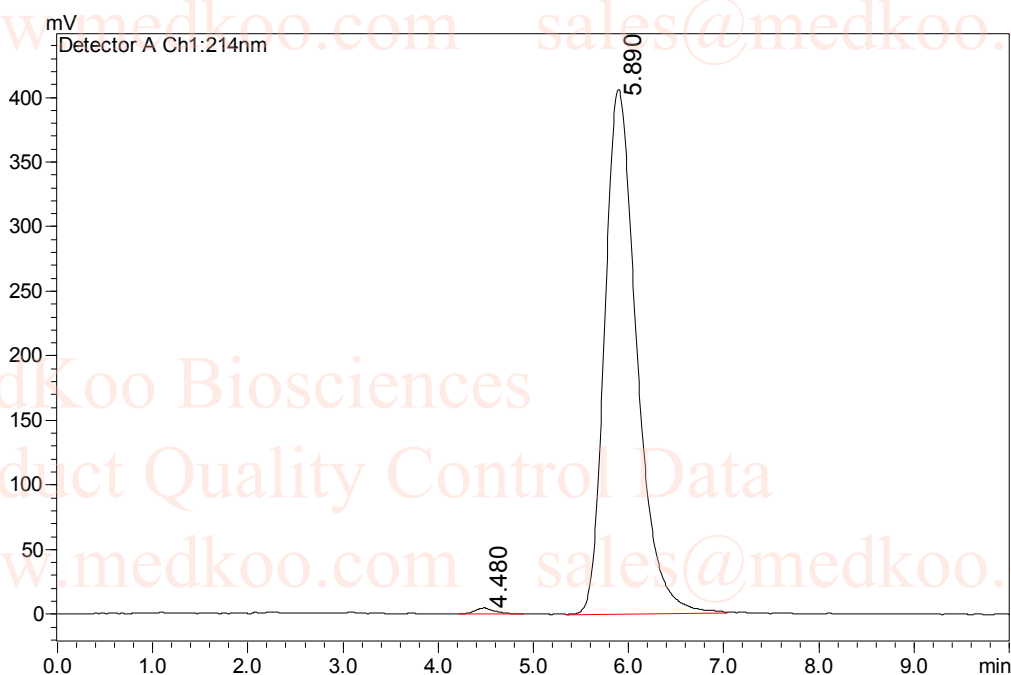
MedKoo Cat#: 406268  
Name: AZD6482  
CAS#: 1173900-33-8 (free base)  
Lot#: SSC30819  
Chemical Formula: C<sub>22</sub>H<sub>24</sub>N<sub>4</sub>O<sub>4</sub>  
Exact Mass: 408.17976  
Molecular Weight: 408.45

# AZD6482 Chiral HPLC Analysis (After Separation)

Column : CHIRALCEL OJ-H  
Column size : 0.46cm I.D. x 15 cm L  
Injection : 3 ul  
Mobile phase : MeOH/ACN =90/10(v/v)  
Flow rate : 1.0 ml/min  
Wave length : UV 214nm  
Temperature : 35 °C  
Sample solution : x mg/ml in mobile phase

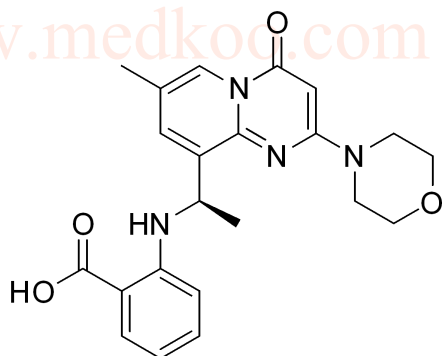
Sample structure : Peak 2

< Chromatogram >



<Column Performance Report>

Peak No.	Time	Area	Area %	T Plate	Tailing	Resolution
1	4.480	69612	0.7276	2418.307	1.231	--
2	5.890	9497552	99.2724	1524.436	1.354	2.915



MedKoo Cat#: 406268  
Name: AZD6482  
CAS#: 1173900-33-8 (free base)  
Lot#: SSC30819  
Chemical Formula: C22H24N4O4  
Exact Mass: 408.17976  
Molecular Weight: 408.45