

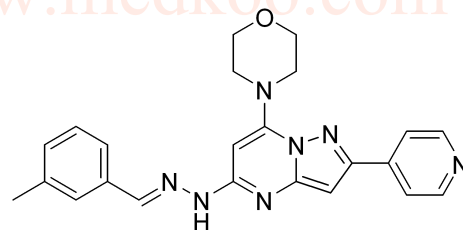
APY-0201 HNMR Analysis, Solvent= DMSO



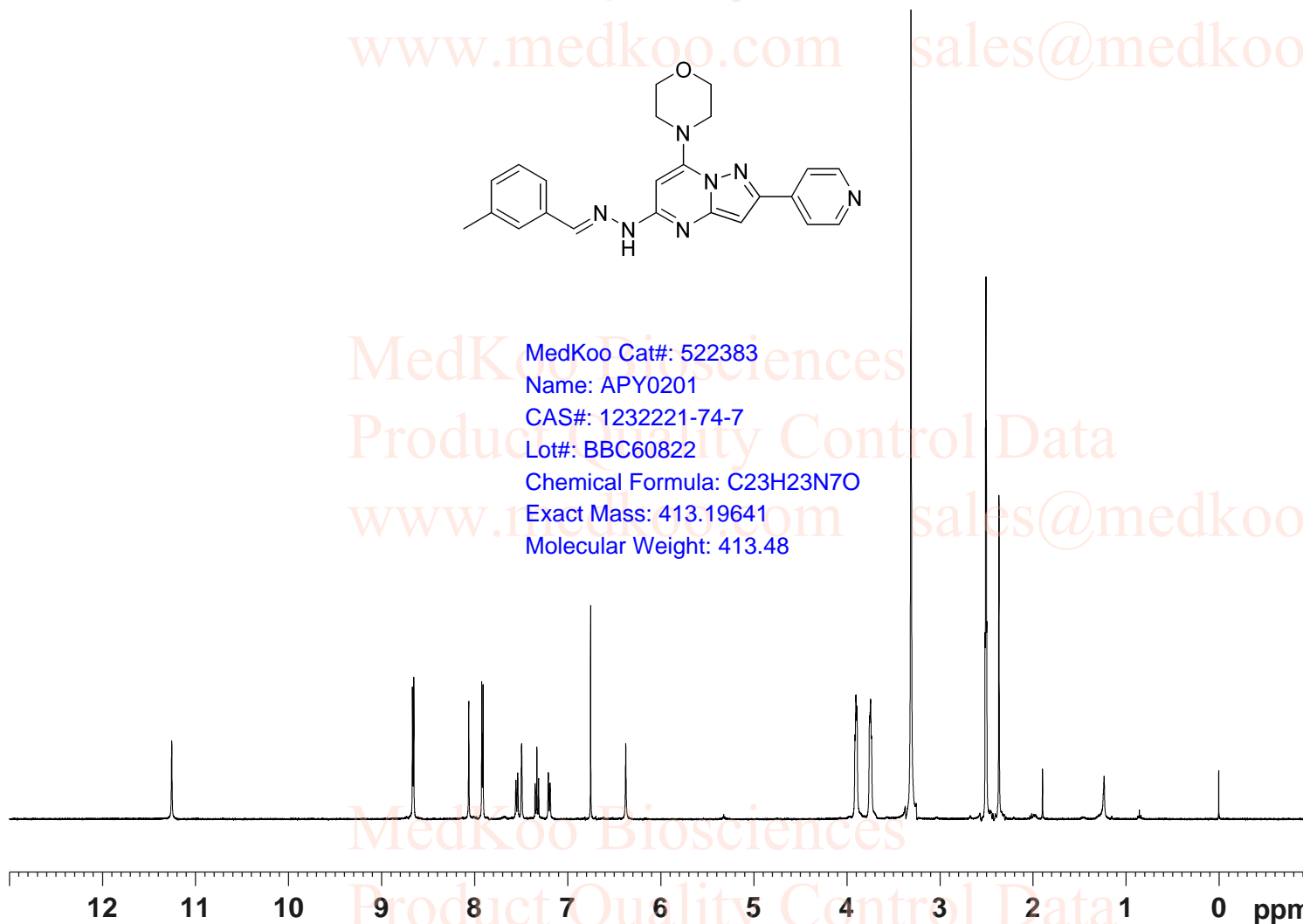
```

Current Data Parameters
NAME          APY-0201
EXPNO         10
PROCNO        1
F2 - Acquisition Parameters
INSTRUM       spect
PROBHD        5 mm PABBO BB-
PULPROG       zg30
TD            65536
SOLVENT       DMSO
NS            16
DS            2
SWH           8012.820 Hz
FIDRES        0.122266 Hz
AQ            4.0894465 sec
RG            203
DW            62.400 usec
DE            6.50 usec
TE            302.5 K
D1            1.00000000 sec
TD0           1
===== CHANNEL f1 =====
SFO1          400.1324710 MHz
NUC1           1H
P1            13.00 usec
PLW1          19.00000000 W
F2 - Processing parameters
SI            65536
SF            400.1300000 MHz
WDW           no
SSB           0
LB            0 Hz
GB            0
PC            1.00
    
```

11.259
 8.672
 8.668
 8.661
 8.657
 8.066
 7.927
 7.923
 7.916
 7.912
 7.559
 7.540
 7.498
 7.353
 7.334
 7.315
 7.211
 7.192
 6.757
 6.379
 3.916
 3.906
 3.893
 3.760
 3.748
 3.738
 3.314
 2.517
 2.513
 2.508
 2.504
 2.499
 2.368



MedKoo Cat#: 522383
 Name: APY0201
 CAS#: 1232221-74-7
 Lot#: BBC60822
 Chemical Formula: C₂₃H₂₃N₇O
 Exact Mass: 413.19641
 Molecular Weight: 413.48



0.93
 1.99
 1.04
 1.84
 1.00
 0.97
 1.01
 0.99
 0.93
 0.90

3.93
 3.91
 3.00

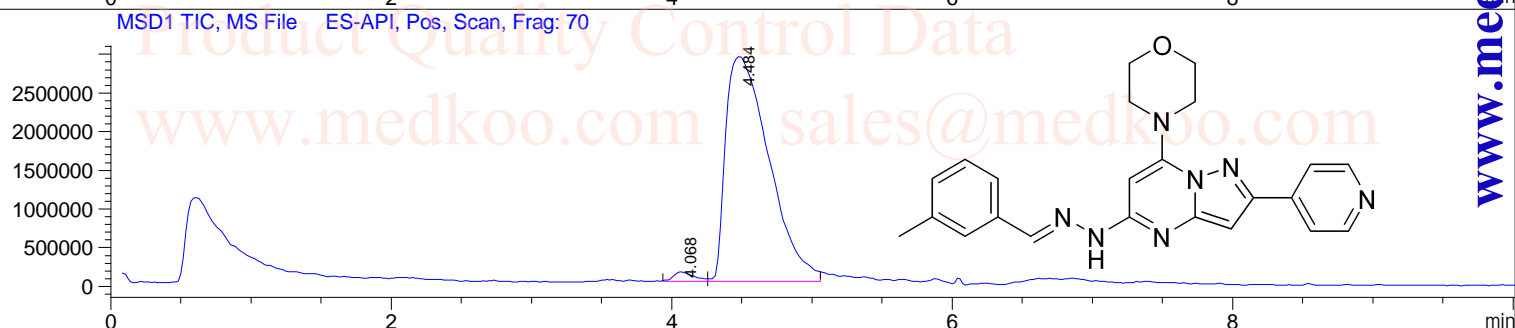
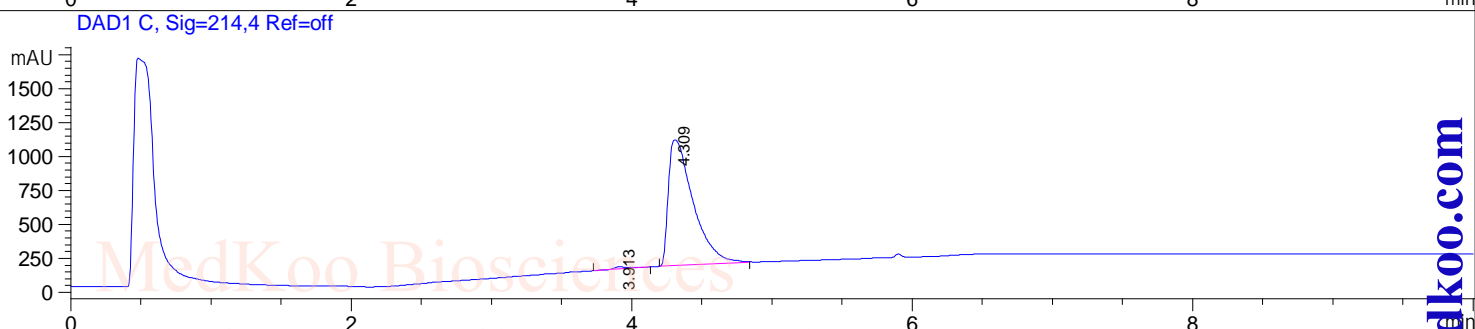
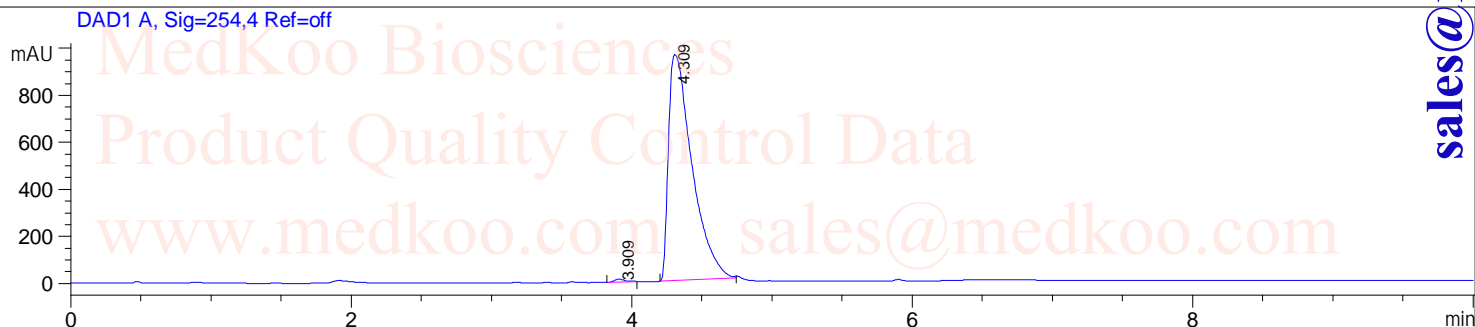
APY-0201 LC/MS Analysis

Sample Name : APY-0201 **Tgt Mass(EZX)** :
Acq. Operator : [BSB2] **Location** : Vial 27
Spec. Reported : MS Integration **Inj** : 1
Acq. Method : C:\Chem32\1\DATA\TEST POS.M **Inj Volume** : 1 ul
Analysis Method : C:\Chem32\1\METHODS\TEST POS.M

sales@medkoo.com

www.medkoo.com

MedKoo Biosciences



Integration Results for DAD1 A, Sig=254,4 Ref=off

RetTim	Width	Area	Height	Area%
3.91	0.08	70.61	12.39	0.62
4.31	0.17	11238.24	961.42	99.38

MedKoo Cat#: 522383

Name: APY0201

CAS#: 1232221-74-7

Lot#: BBC60822

Integration Results for DAD1 C, Sig=214,4 Ref=off

RetTim	Width	Area	Height	Area%
3.91	0.10	119.60	17.05	1.04
4.31	0.18	11362.05	928.32	98.96

Chemical Formula: C₂₃H₂₃N₇O

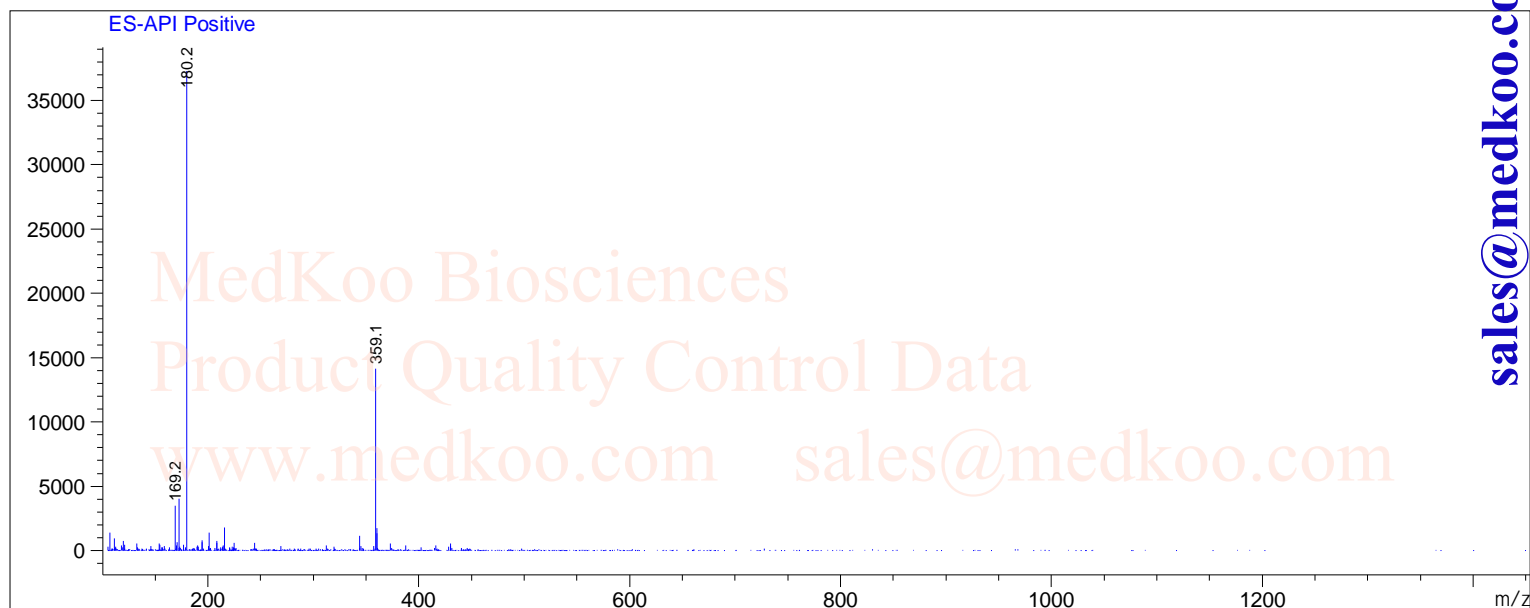
Exact Mass: 413.19641

Molecular Weight: 413.48

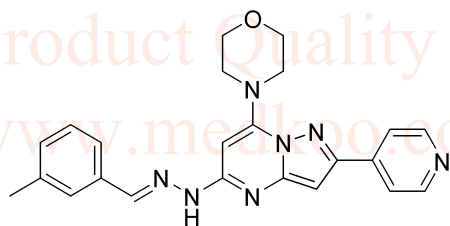
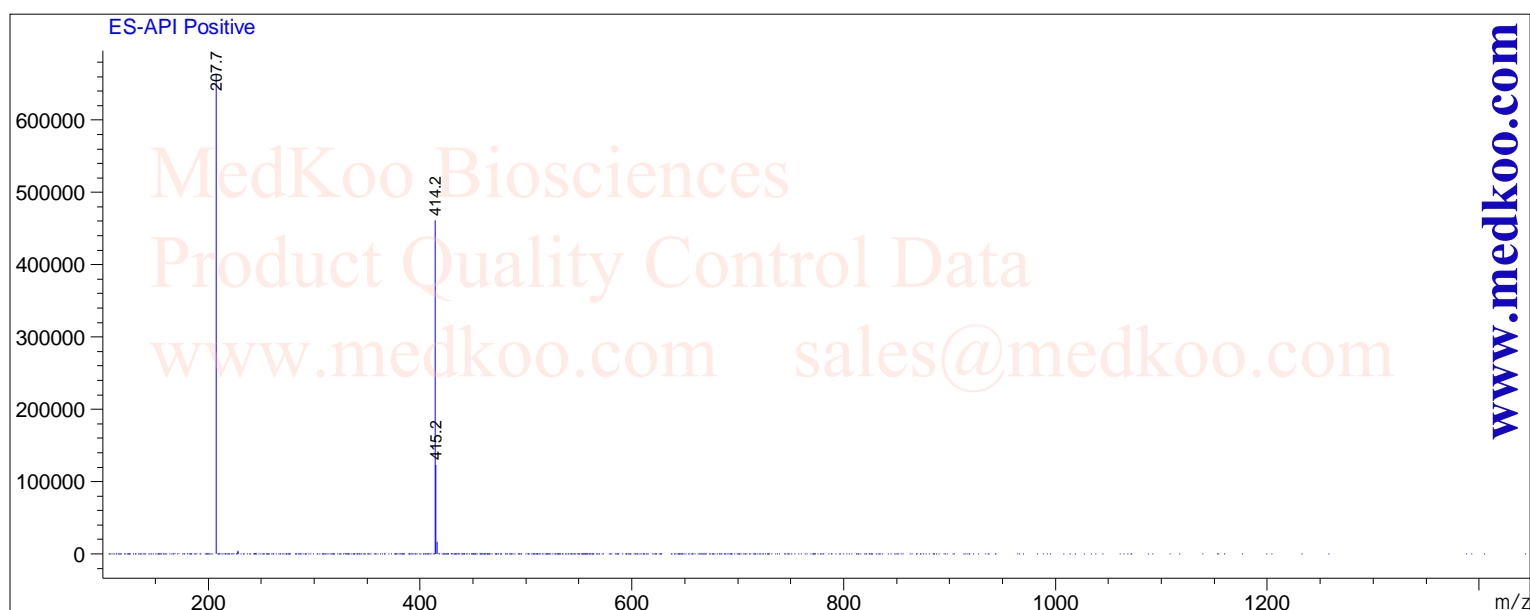
APY-0201 LC/MS Analysis

Ret. Time: 4.07

<<<< POSITIVE SPECTRA >>>>



Ret. Time: 4.48



MedKoo Cat#: 522383

Name: APY0201

CAS#: 1232221-74-7

Lot#: BBC60822

Chemical Formula: C₂₃H₂₃N₇O

Exact Mass: 413.19641

Molecular Weight: 413.48

sales@medkoo.com

www.medkoo.com

MedKoo Biosciences