

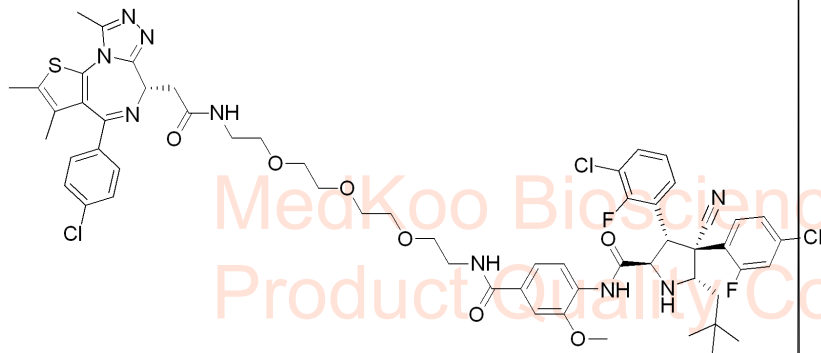
8.211
8.190
7.495
7.723
7.490
7.391
7.365
7.358
7.353
7.343
7.337
7.333
7.240

4.730
4.608
4.872
4.050
3.945
3.671
3.661
3.649
3.645
3.641
3.636
3.623
3.619
3.573
3.562
3.412
3.313
3.309
3.305
3.301
3.297
2.649
2.412
1.658
1.347
1.325
1.020

-0.001

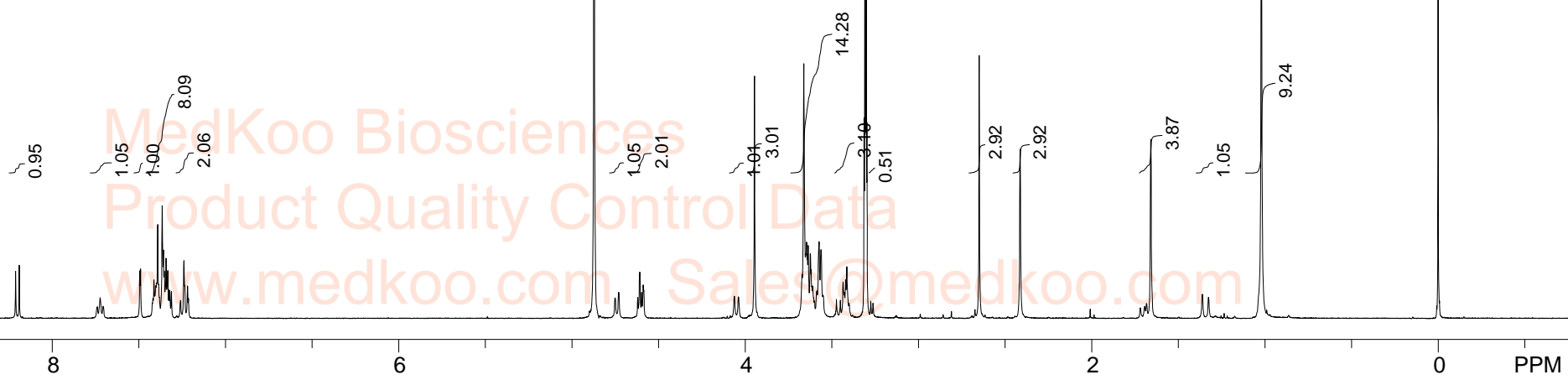
A1874 HNMR Analysis, Solvent: MeOD

Product Quality Control Data
www.medkoo.com Sales@medkoo.com



MedKoo Cat#: 573175
Name: A1874
CAS#: 2064292-12-0
Lot#: A21T09K26
Chemical Formula: C58H62Cl3F2N9O7S
Exact Mass: 1171.3527
Molecular Weight: 1173.6

Product Quality Control Data
www.medkoo.com Sales@medkoo.com



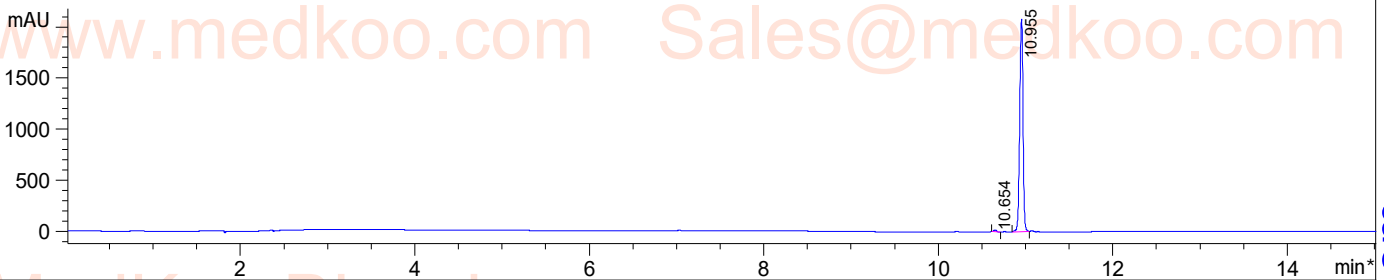
MeOD	F1: 400.130	F2: 1.000	SW1: 8224	PD: 1.000	OF1: 2461.4	PTS1d: 32768
EX: zg30	www.medkoo.com	www.medkoo.com	www.medkoo.com	www.medkoo.com	www.medkoo.com	www.medkoo.com

A1874 HPLC Analysis

Sample Name : 2064292-12-0
Acq. Method : D:\METHODS\2-POS-15MIN.M
Analysis Method : D:\METHODS\2-POS-15MIN.M
Sample Info : Easy-Access Method: '2-POS-15MIN'
Method Info : Mobile Phase : A:water(0.01%TFA) B:ACN(0.01%TFA)
 Gradient:5%B increase to 95%B within 9min,95%B for 6min
 Flow Rate :1ml/min
 Column :Sunfire C18 150*4.6mm,3.5um
 Column Temperature:45C
 Detection:UV(214nm,4nm) and MS(ESI,POS Mode,110-1300amu)

MedKoo Biosciences Product Quality Control Data

*DAD1 A, Sig=214,4 Ref=off



*DAD1 B, Sig=254,4 Ref=off

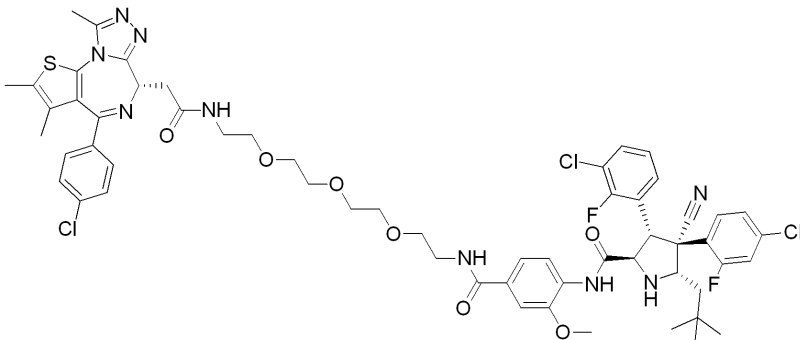


Integration Results for DAD1 A, Sig=214,4 Ref=off

RetTim	Width	Area	Height	Area%
10.65	0.03	38.01	17.02	0.68
10.96	0.04	5512.43	2083.89	99.32

Integration Results for DAD1 B, Sig=254,4 Ref=off

RetTim	Width	Area	Height	Area%
10.95	0.04	3670.46	1468.87	100.00



MedKoo Cat#: 573175
 Name: A1874
 CAS#: 2064292-12-0
 Lot#: A21T09K26
 Chemical Formula:
 C58H62Cl3F2N9O7S
 Exact Mass: 1171.3527
 Molecular Weight: 1173.6

sales@medkoo.com
 www.medkoo.com
 MedKoo Biosciences
 www.medkoo.com

A1874 LC/MS Analysis

Sample Name : 2064292-12-0

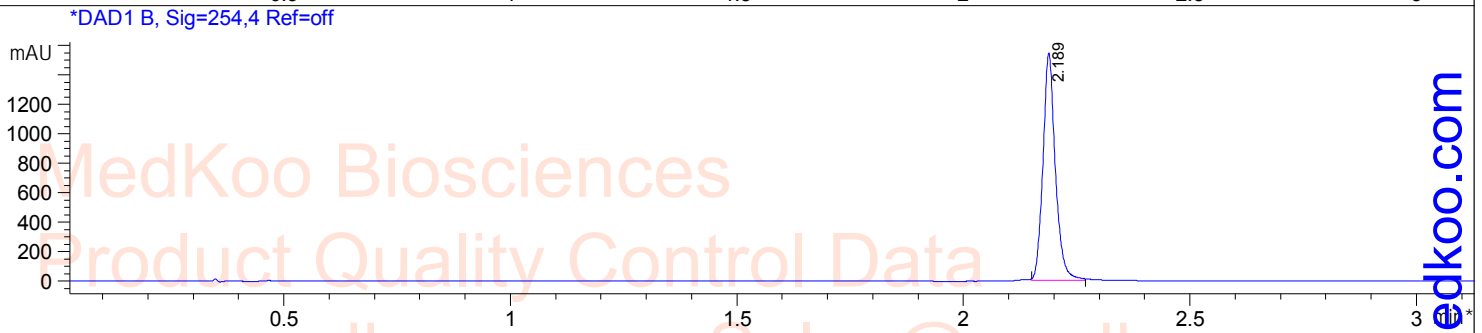
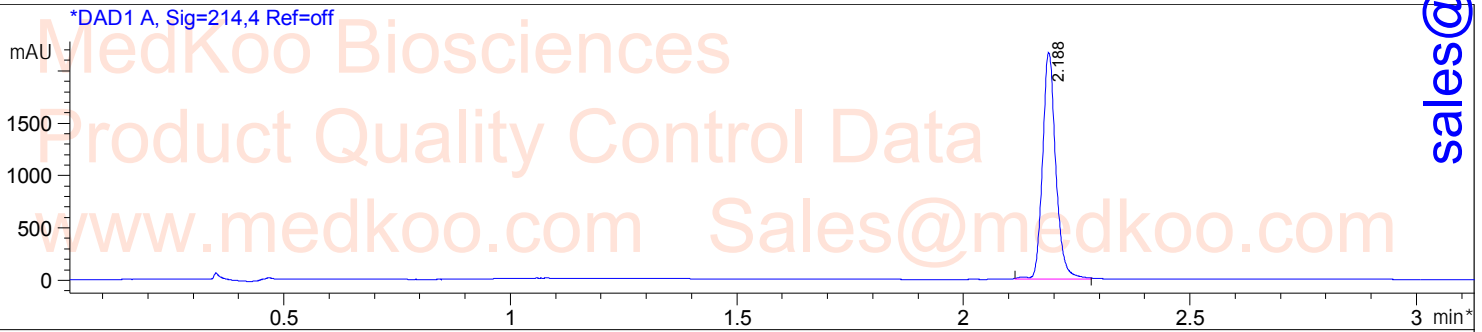
Method Info : Column:SunFire C18 (4.6x 50 mm,3.5 um)

Mobile phase: H2O(0.01%TFA) (A) / ACN(0.01%TFA) (B)

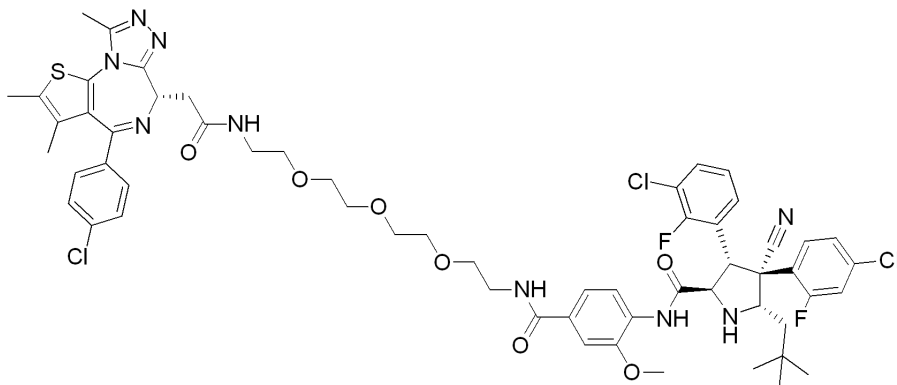
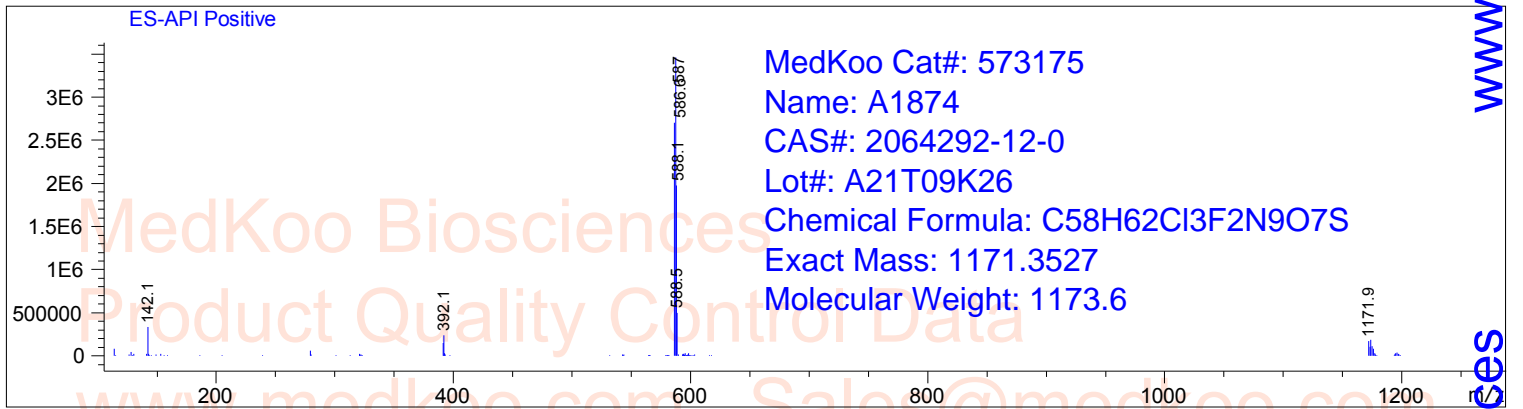
Elution program: Gradient from 10 to95% of B in 1.4 min at 2ml/min

Temperature: 50 °C

Detection: UV (214 , 4 nm) and MS (ESI, Pos mode ,110 to 1000 amu)



Ret. Time: 2.33



sales@medkoo.com

www.medkoo.com

MedKoo Biosciences