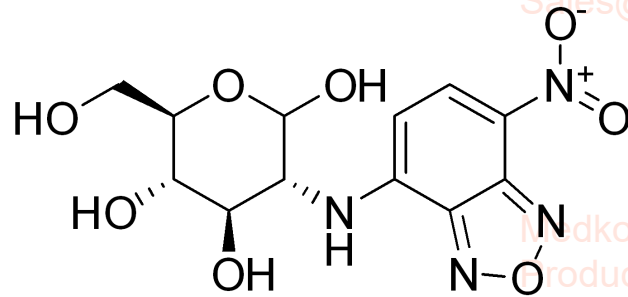
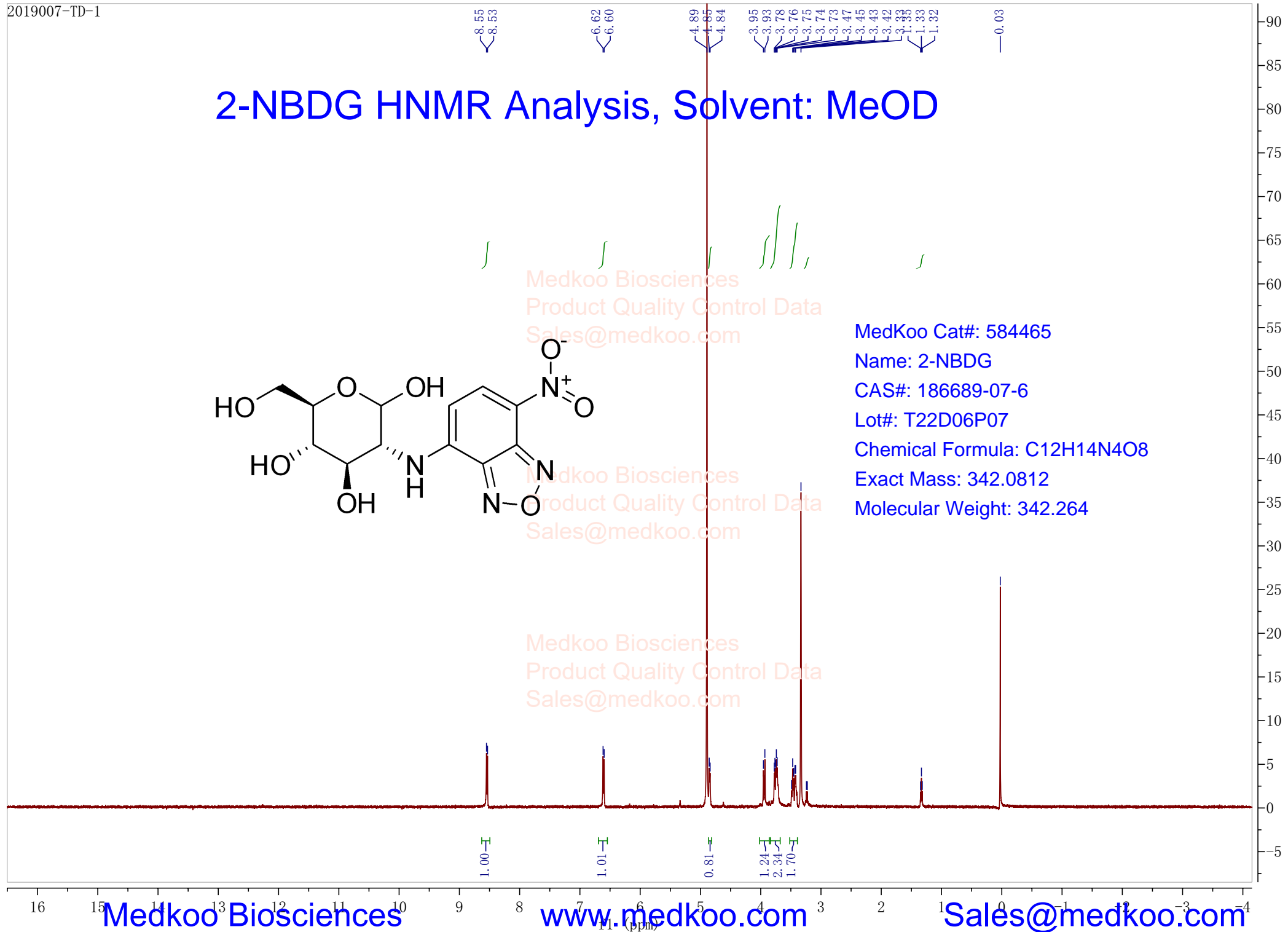


2-NBDG HNMR Analysis, Solvent: MeOD



MedKoo Cat#: 584465
Name: 2-NBDG
CAS#: 186689-07-6
Lot#: T22D06P07
Chemical Formula: C₁₂H₁₄N₄O₈
Exact Mass: 342.0812
Molecular Weight: 342.264



Medkoo Biosciences
Product Quality Control Data
Sales@medkoo.com

Medkoo Biosciences
Product Quality Control Data
Sales@medkoo.com

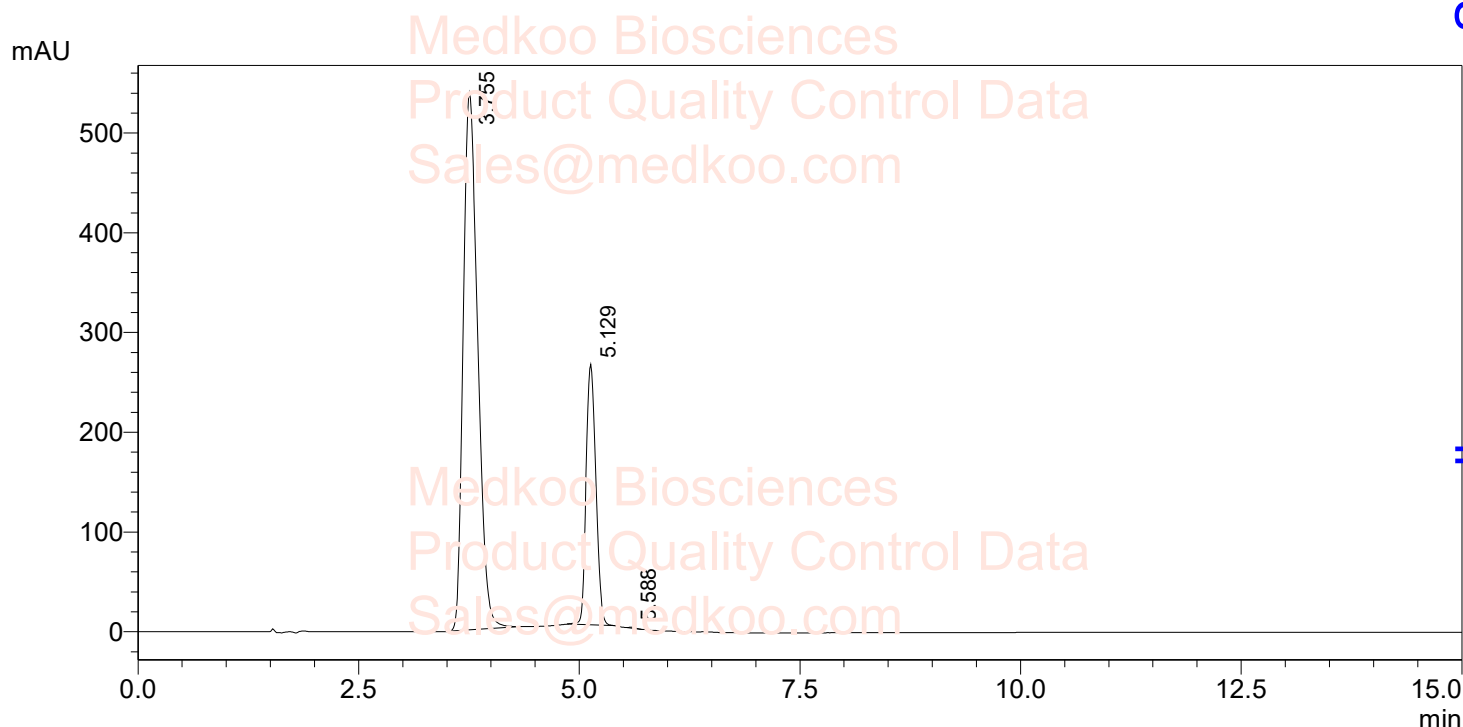
Medkoo Biosciences
Product Quality Control Data
Sales@medkoo.com

2-NBDG HPLC Analysis

Sample Name : 2-NBDG
Vial# : 1-34
Injection Volume : 1 uL

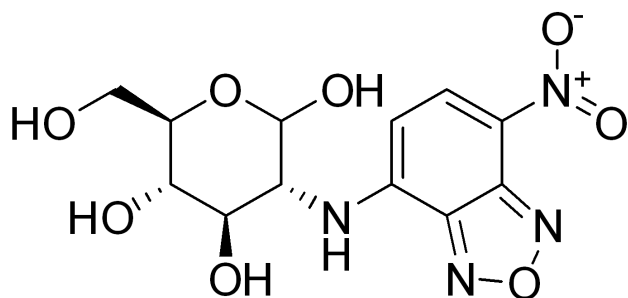
Data Filename : E:\DATA\2-NBDG.lcd
Method Filename : C:\LabSolutions\Data\Project1\LCMS-WT1.lcm

FLOW RATE: 1ML/MIN
COLUMN: KROMASIL 100-5-C8 150*4.6MM 5UM
COLUME TEMPERATURE: 25
GRADIENT PROGRAMME:
TIME(MIN) MOBILE PHASE-A(H2O+0.1%HCOOH) MOBILE PHASE-B(CH3CN+0.1%HCOOH)
0 90 10
5 0 100
15 0 100



PDA Ch3 465nm

Peak#	Ret. Time	Height	Height%	Area	Area%
1	3.755	538620	67.260	6118032	75.271
2	5.129	261197	32.617	2005694	24.676
3	5.588	425	0.123	4257	0.052
总计		800242	100.000	8127953	100.000



MedKoo Cat#: 584465

Name: 2-NBDG

CAS#: 186689-07-6

Lot#: T22D06P07

Chemical Formula: C₁₂H₁₄N₄O₈

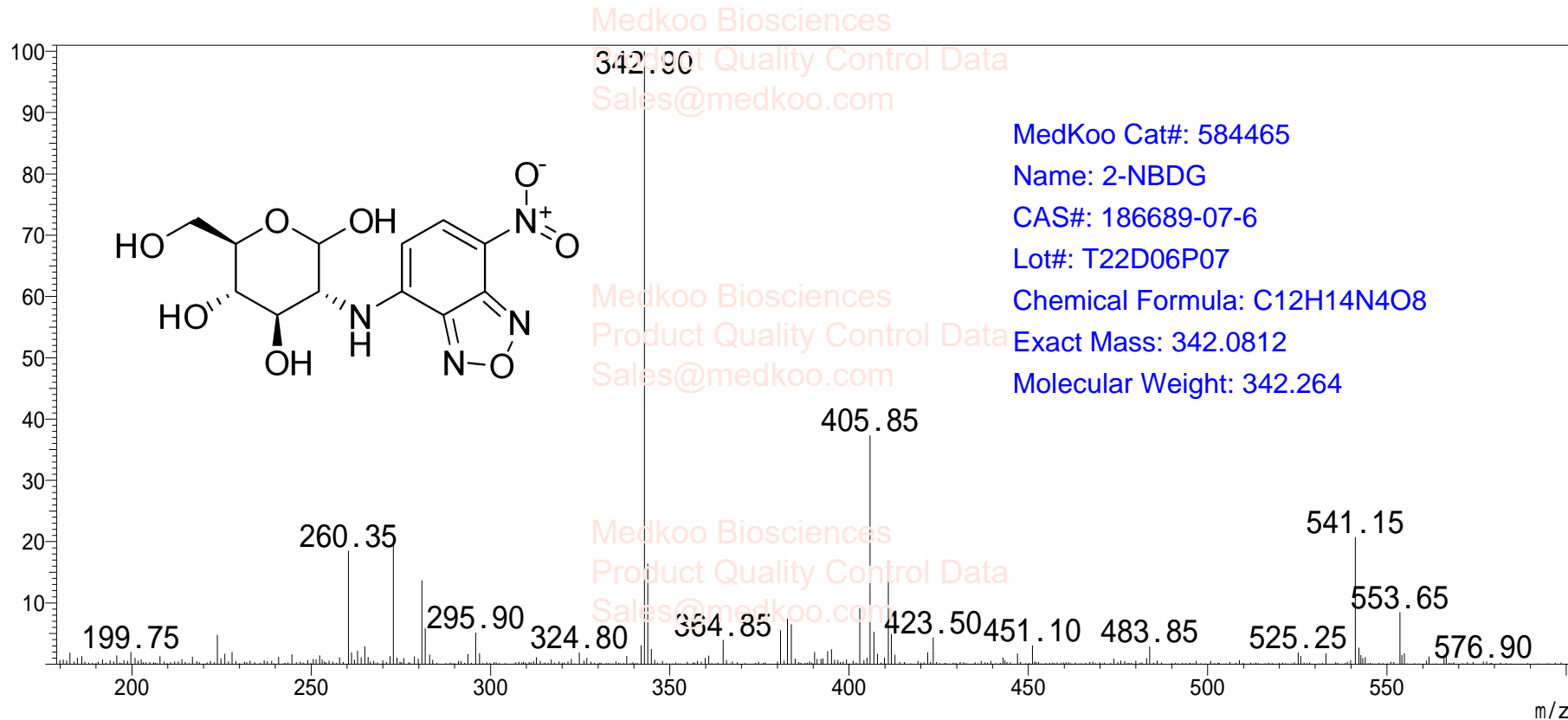
Exact Mass: 342.0812

Molecular Weight: 342.264

2-NBDG MS Analysis

Sample Name : 2-NBDG
User : System Administrator
Sample Type : Unknown
Location : 1
Vial # : 34
Inj. Volume : 1
Data File : 2-NBDG.lcd
Method File : LCMS-WT1.lcm

#:1 Ret. Time:3.967min



2-NBDG MS Analysis

Sample Name : 2-NBDG
User : System Administrator
Sample Type : Unknown
Location : 1
Vial # : 34
Inj. Volume : 1
Data File : 2-NBDG.lcd
Method File : LCMS-WT1.lcm

#:2 Ret. Time:5.233min

