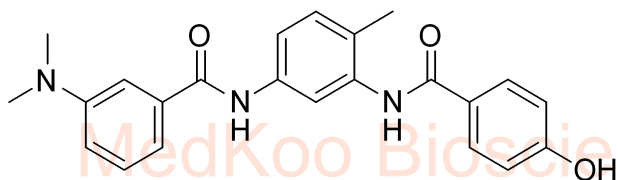


MedKoo Biosciences
ZM336372 HNMR Analysis, Solvent = DMSO-d6

www.medkoo.com Sales@medkoo.com



MedKoo Cat#: 405650

Name: ZM336372

CAS#: 208260-29-1

Lot#: CRB50303

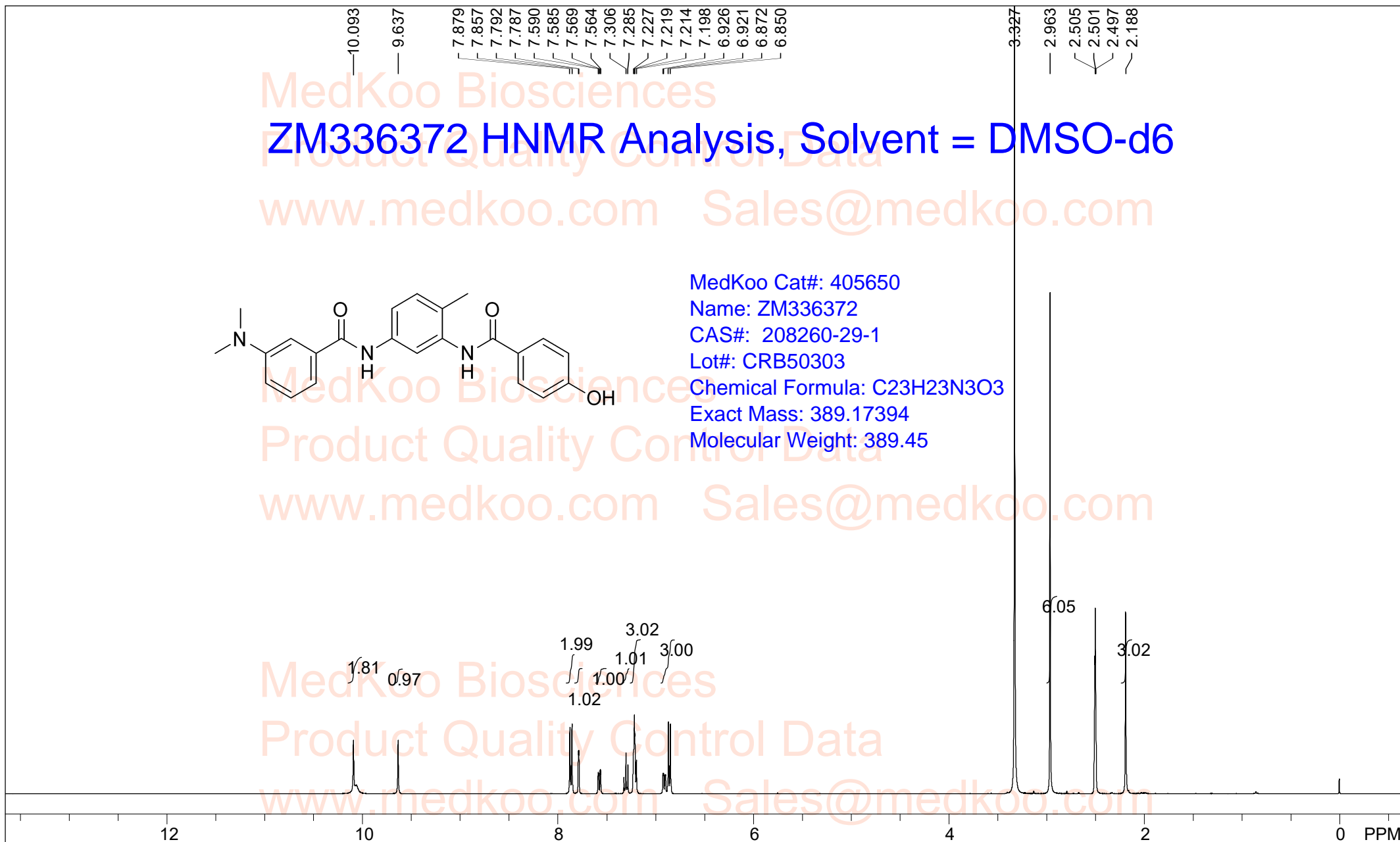
Chemical Formula: C₂₃H₂₃N₃O₃

Exact Mass: 389.17394

Molecular Weight: 389.45

Product Quality Control Data
www.medkoo.com Sales@medkoo.com

Product Quality Control Data
www.medkoo.com Sales@medkoo.com



spect, DMSO,

F1: 400.132	F2: 1.000	SW1: 8013	OF1: 2468.2	PTS1d: 65536
EX: zg30	PW: 14.8 usec	PD: 1.0 sec	NA: 16	LB: 0.0

Nuts - \$pdata

ZM336372 HPLC Analysis

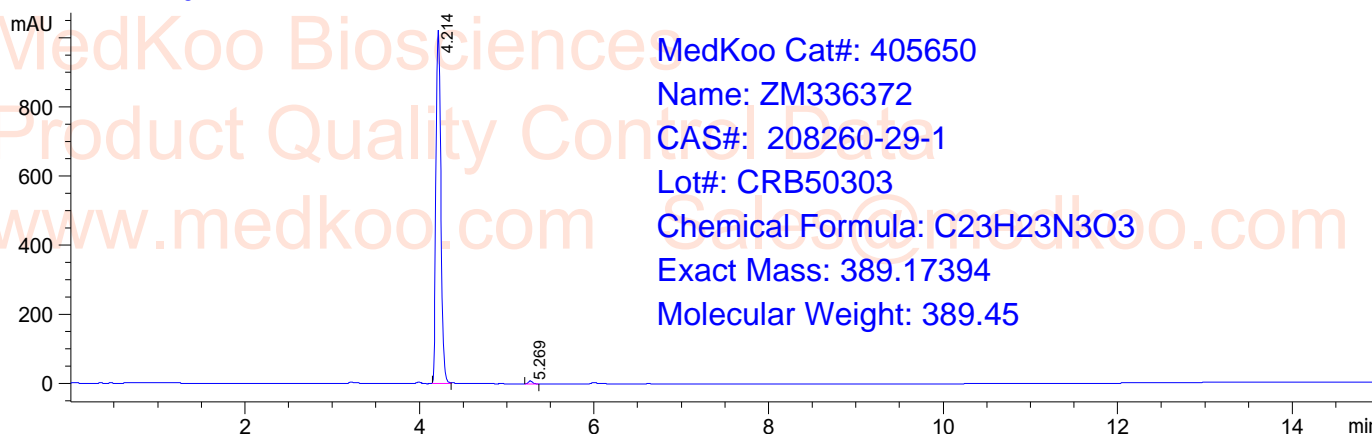
Sample Name : 208260-29-1
Acq. Operator : 3
Spec. Reported : Integration

Location : P2-E-02
Inj : 0
Inj Volume : 3.5 ul

DAD1 A, Sig=214,2 Ref=off



DAD1 B, Sig=254,4 Ref=off



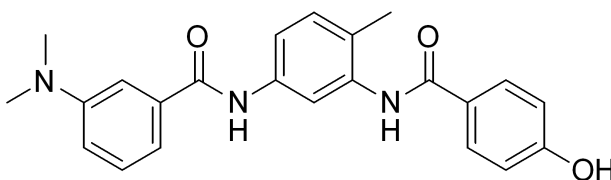
MedKoo Cat#: 405650
Name: ZM336372
CAS#: 208260-29-1
Lot#: CRB50303
Chemical Formula: C₂₃H₂₃N₃O₃
Exact Mass: 389.17394
Molecular Weight: 389.45

Integration Results for DAD1 A, Sig=214,2 Ref=off

RetTim	Width	Area	Height	Area%
3.21	0.08	59.87	9.96	1.26
4.21	0.06	4669.59	1202.89	98.02
5.27	0.05	34.50	11.45	0.72

Integration Results for DAD1 B, Sig=254,4 Ref=off

RetTim	Width	Area	Height	Area%
4.21	0.06	3955.17	1022.57	99.31
5.27	0.05	27.66	9.24	0.69

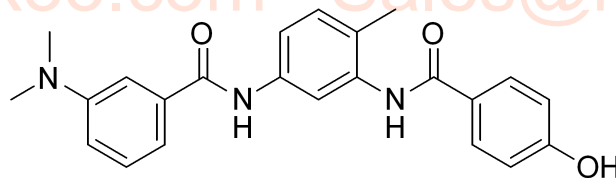
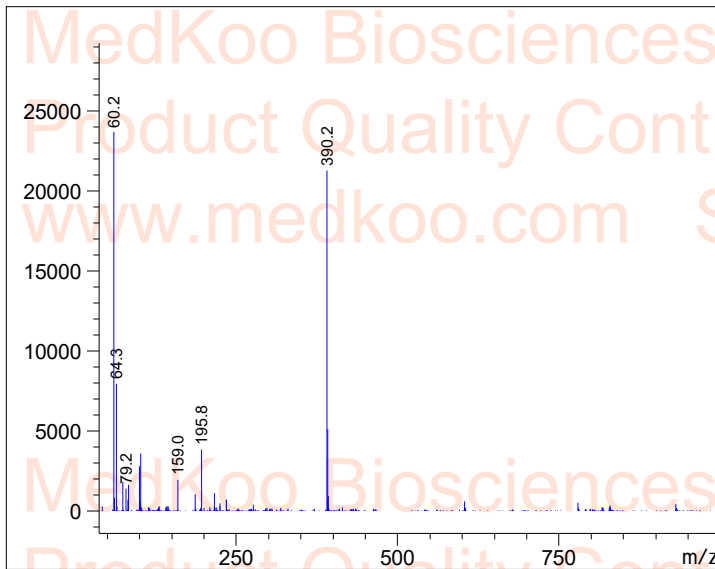


ZM336372 MS Analysis

File D:\DATA\PDF DATA\A.

Sample Name : A
Acq. Operator : 8
Spec. Reported : MS

Location : P2-D-07
Inj : 0
Inj Volume : 1.8 ul



MedKoo Cat#: 405650

Name: ZM336372

CAS#: 208260-29-1

Lot#: CRB50303

Chemical Formula: C₂₃H₂₃N₃O₃

Exact Mass: 389.17394

Molecular Weight: 389.45