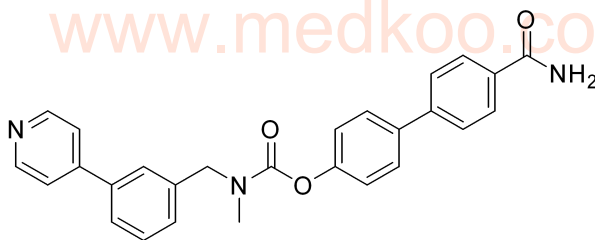


WWL70 HNMR Analysis, Solvent = d6-DMSO

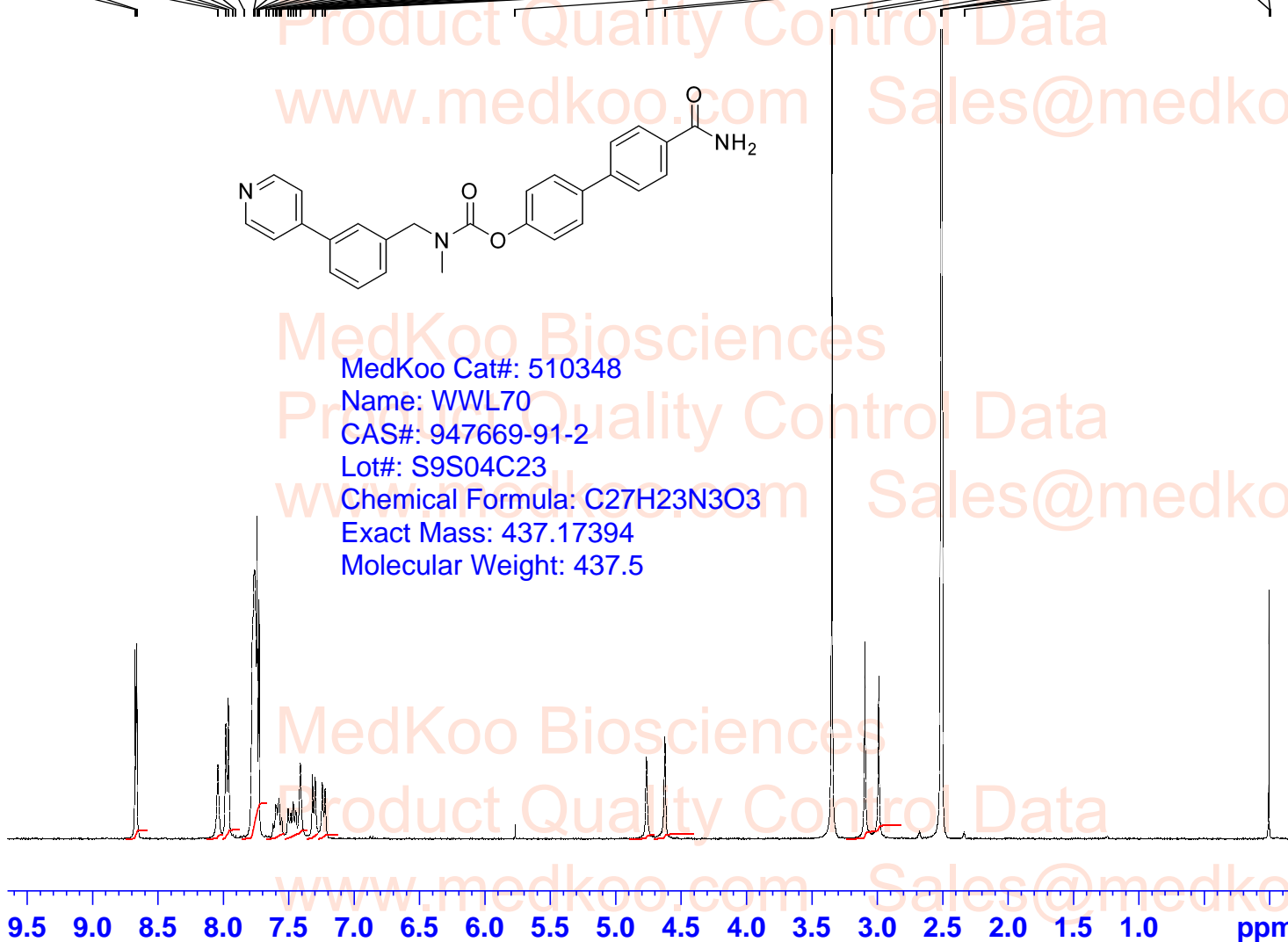


8.677
8.662
8.043
7.983
7.963
7.927
7.906
7.845
7.767
7.761
7.743
7.739
7.732
7.728
7.675
7.654
7.621
7.601
7.594
7.575
7.556
7.506
7.487
7.466
7.447
7.412
7.319
7.298
7.244
7.223
5.769
4.765
4.625
3.347
3.095
2.989
2.679
2.514
2.509
2.505
2.336
0.006
-0.002



MedKoo Cat#: 510348
Name: WWL70
CAS#: 947669-91-2
Lot#: S9S04C23
Chemical Formula: C₂₇H₂₃N₃O₃
Exact Mass: 437.17394
Molecular Weight: 437.5

Current Data Parameters
NAME 20190423-W
EXPNO 1
PROCNO 1
F2 - Acquisition Parameters
INSTRUM spect
PROBHD 5 mm PADUL 13C
PULPROG zg30
TD 65536
SOLVENT DMSO
NS 16
DS 2
SWH 8012.820 Hz
FIDRES 0.122266 Hz
AQ 4.0894465 sec
RG 199.46
DW 62.400 usec
DE 6.50 usec
TE 294.4 K
D1 1.00000000 sec
TD0 1
==== CHANNEL f1 =====
SFO1 400.1324710 MHz
NUC1 1H
P1 10.00 usec
PLW1 20.00000000 W
F2 - Processing parameters
SI 65536
SF 400.1300000 MHz
WDW EM
SSB 0
LB 0.30 Hz
GB 0
PC 1.00



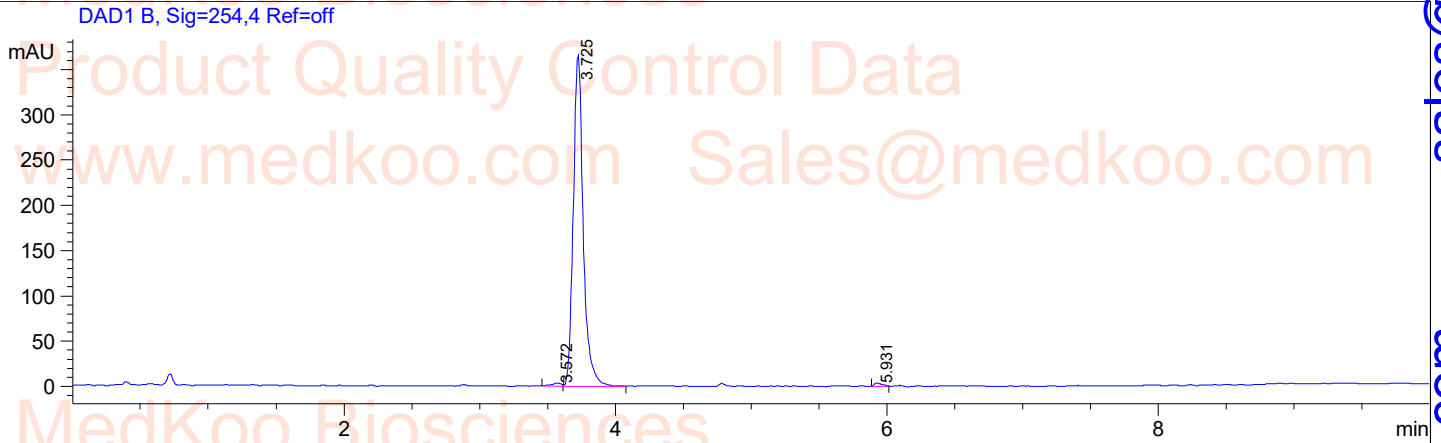
2.00
0.99
2.18
8.27
1.16
2.10
1.11
1.00
0.95
1.12
3.20

WWL70 HPLC Analysis

Sample Name : W
Acq. Operator : 1
Spec. Reported : Integration

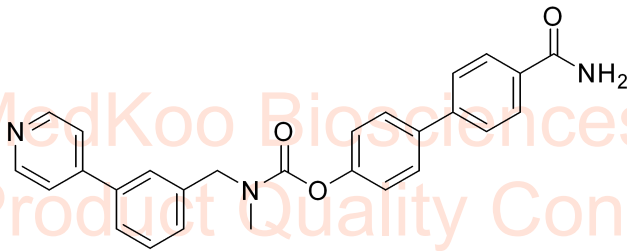
Tgt Mass(EZX) :
Location : P2-C-08
Inj : 0
Inj Volume : 5 ul

MedKoo Biosciences



Integration Results for DAD1 B, Sig=254,4 Ref=off

RetTim	Width	Area	Height	Area%
3.57	0.09	18.57	3.47	0.98
3.73	0.08	1857.36	365.21	98.24
5.93	0.07	14.66	3.56	0.78



MedKoo Cat#: 510348
Name: WWL70
CAS#: 947669-91-2
Lot#: S9S04C23
Chemical Formula: C₂₇H₂₃N₃O₃
Exact Mass: 437.17394
Molecular Weight: 437.5

MedKoo Biosciences

Product Quality Control Data
www.medkoo.com Sales@medkoo.com

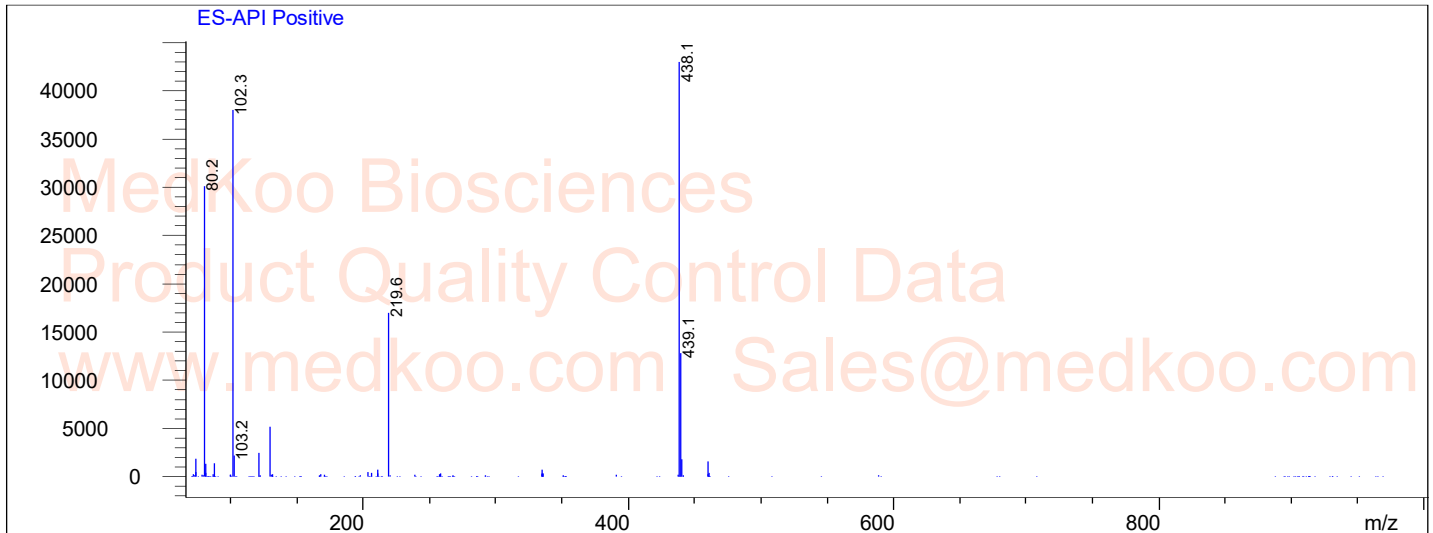
sales@medkoo.com

www.medkoo.com

MedKoo Biosciences

WWL70 MS Analysis

<<<< POSITIVE SPECTRA >>>>



MedKoo Cat#: 510348

Name: WWL70

CAS#: 947669-91-2

Lot#: S9S04C23

Chemical Formula: C₂₇H₂₃N₃O₃

Exact Mass: 437.17394

Molecular Weight: 437.5