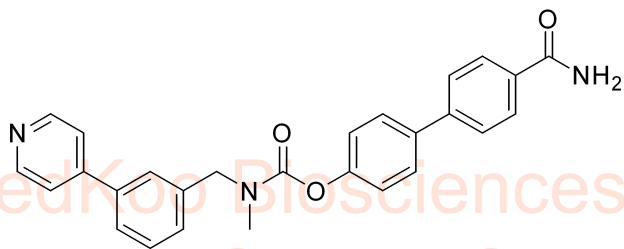


8.654
 8.050
 7.980
 7.964
 7.751
 7.562
 7.491
 7.455
 7.421
 7.306
 7.288
 7.233
 7.214
 4.750
 4.614
 3.364
 3.081
 2.978
 2.500

WWL70 HNMR Analysis, Solvent = d6-DMSO

MedKoo Biosciences
 Product Quality Control Data
 www.medkoo.com Sales@medkoo.com



MedKoo Cat#: 510348
 Name: WWL70
 CAS#: 947669-91-2
 Lot#: S7S11C27
 Chemical Formula: C27H23N3O3
 Exact Mass: 437.17394
 Molecular Weight: 437.5

MedKoo Biosciences
 Product Quality Control Data
 www.medkoo.com Sales@medkoo.com



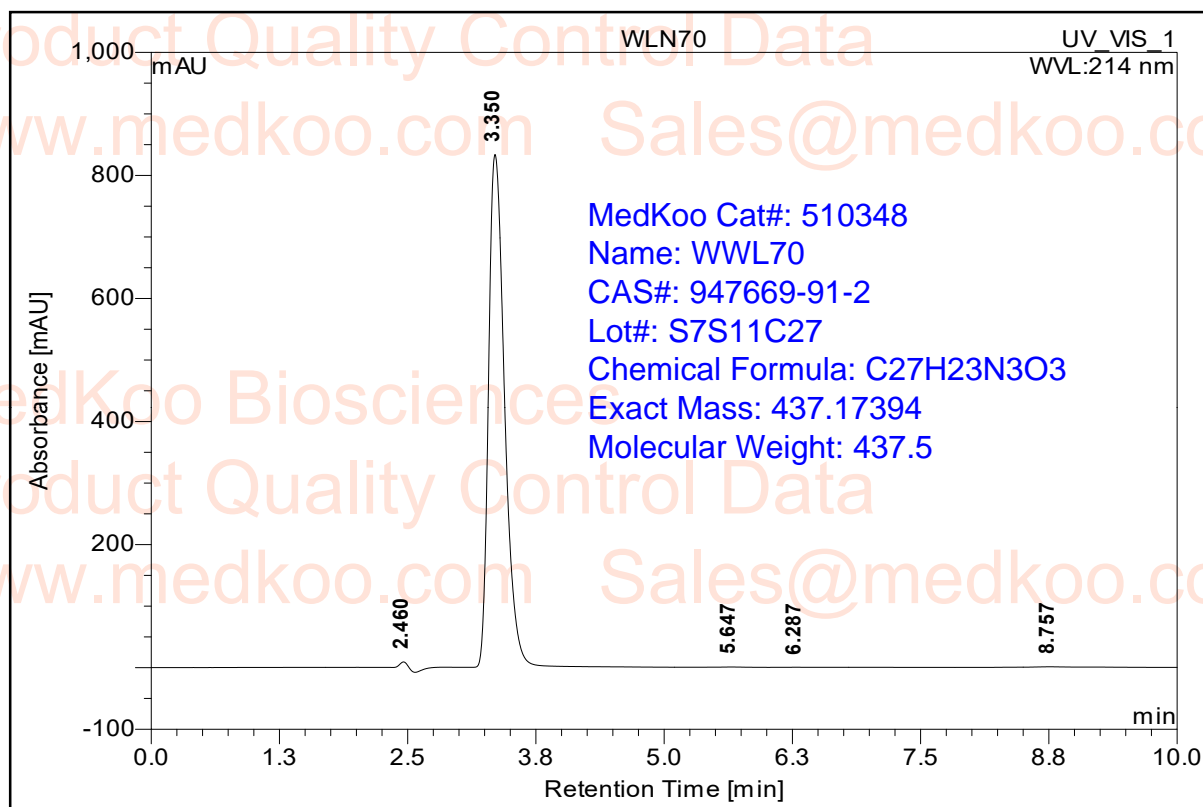
MedKoo Biosciences
 Product Quality Control Data
 www.medkoo.com Sales@medkoo.com

WWL70, d6-DMSO, 400MHz

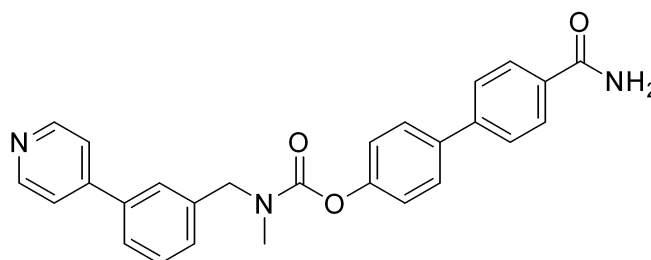
F1: 399.790	F2: 100.536	SW1: 6410		OF1: 2415.6		PTS1d: 16384	
EX: s2pul		PW: 5.6 usec	PD: 1.0 sec	NA: 16	LB: 0.0	Nuts - \$-WLN-70-DMSO.fid	

WWL70 HPLC Analysis

Sample Name:	WLN70	Injection Volume:	2.0
Vial Number:	RE3	Channel:	UV_VIS_1
Sample Type:	unknown	Wavelength:	214
Control Program:		Bandwidth:	4
Quantif. Method:	default	Dilution Factor:	1.0000
		Sample Weight:	1.0000
		Sample Amount:	1.0000

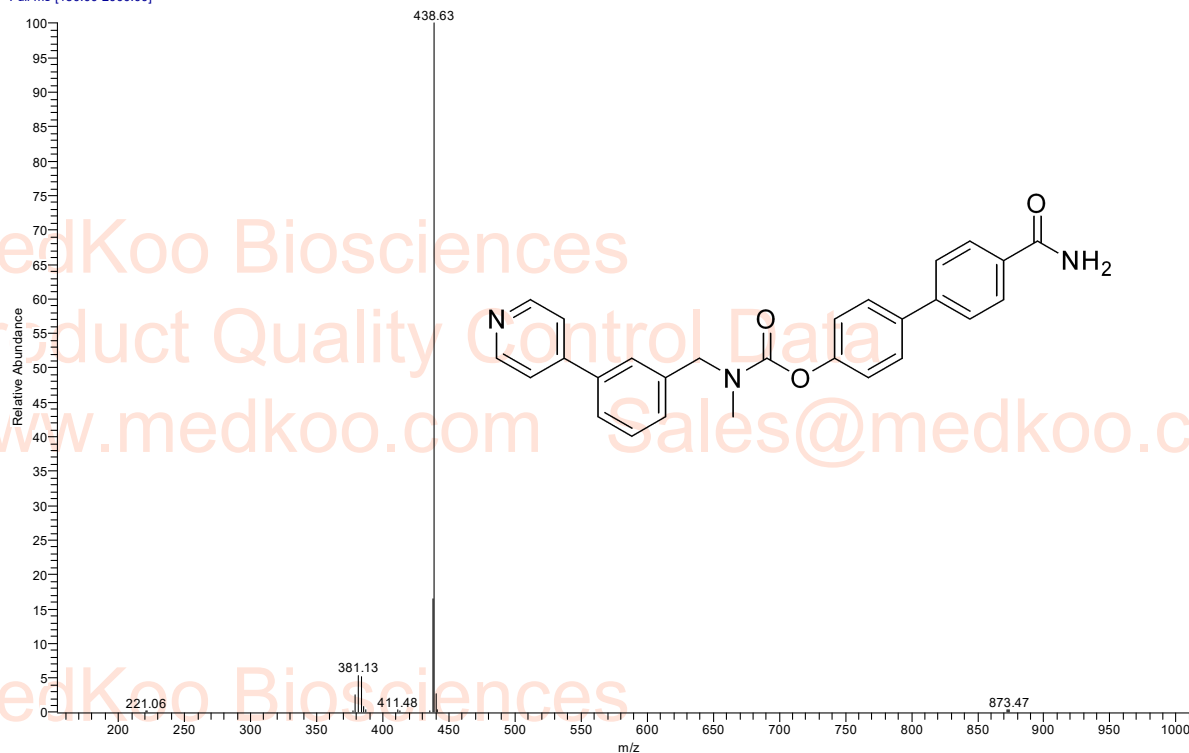


No.	Ret.Time min	Peak Name	Height mAU	Area mAU*min	Rel.Area %	Amount n.a.	Type
1	2.46	n.a.	9.128	0.685	0.45	n.a.	BMB*
2	3.35	n.a.	833.292	151.816	99.17	n.a.	BMB*
3	5.65	n.a.	0.414	0.111	0.07	n.a.	BMB*
4	6.29	n.a.	0.129	0.034	0.02	n.a.	BMB*
5	8.76	n.a.	0.813	0.445	0.29	n.a.	BMB*
Total:			843.778	153.092	100.00	0.000	

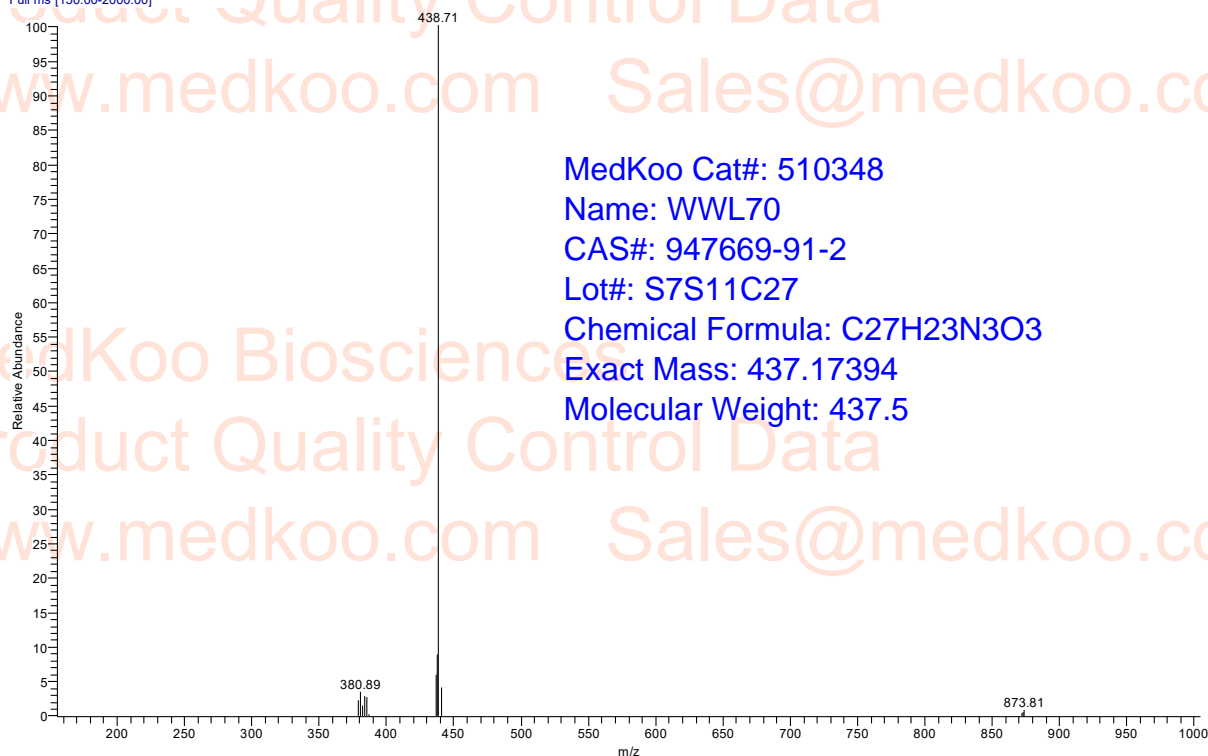


WWL70 MS Analysis

WLN-70_#195 RT: 1.86 AV: 1 SB: 121 0.04-1.19 NL: 2.83E5 T: ITMS + c ESI
Full ms [150.00-2000.00]



WLN-70_#20 RT: 0.17 AV: 1 SB: 4 0.05-0.08 NL: 1.15E5 T: ITMS + c ESI
Full ms [150.00-2000.00]



MedKoo Cat#: 510348

Name: WWL70

CAS#: 947669-91-2

Lot#: S7S11C27

Chemical Formula: C₂₇H₂₃N₃O₃

Exact Mass: 437.17394

Molecular Weight: 437.5