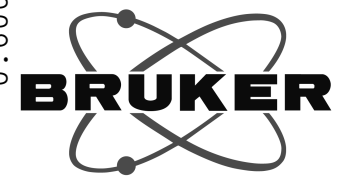
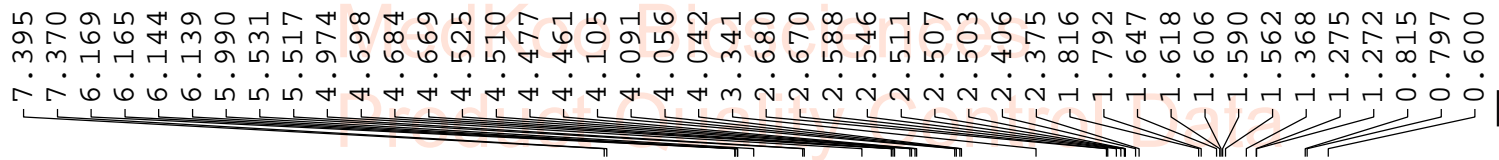
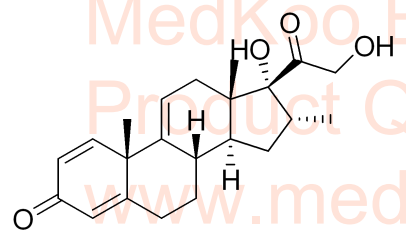


Vamorolone HNMR Analysis, Solvent = DMSO



www.medkoo.com Sales@medkoo.com



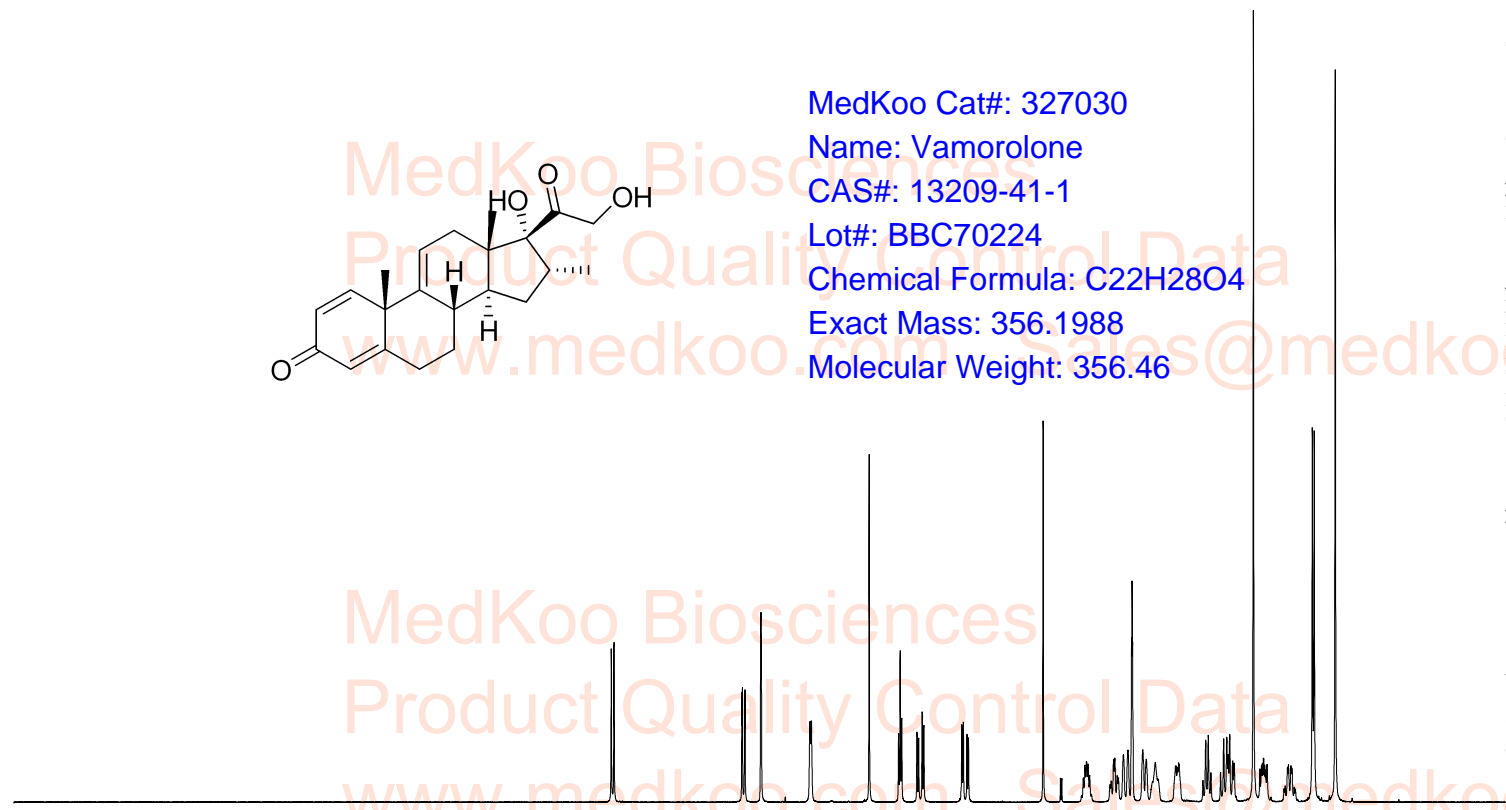
MedKoo Cat#: 327030
 Name: Vamorolone
 CAS#: 13209-41-1
 Lot#: BBC70224
 Chemical Formula: C₂₂H₂₈O₄
 Exact Mass: 356.1988
 Molecular Weight: 356.46

```
Current Data Parameters
NAME          VBP-15
EXPNO         10
PROCNO        1

F2 - Acquisition Parameters
Time          15.08
INSTRUM       spect
PROBHD        5 mm PABBO BB-
PULPROG       zg30
TD            65536
SOLVENT       DMSO
NS            16
DS            2
SWH           8012.820 Hz
FIDRES        0.122266 Hz
AQ            4.0894465 sec
RG            101
DW            62.400 usec
DE            6.50 usec
TE            295.6 K
D1            1.00000000 sec
TD0           1

===== CHANNEL f1 =====
SFO1          400.1324710 MHz
NUC1           1H
P1            13.00 usec
PLW1          19.00000000 W

F2 - Processing parameters
SI            65536
SF            400.1300000 MHz
WDW           no
SSB           0
LB            0 Hz
GB            0
PC            1.00
```

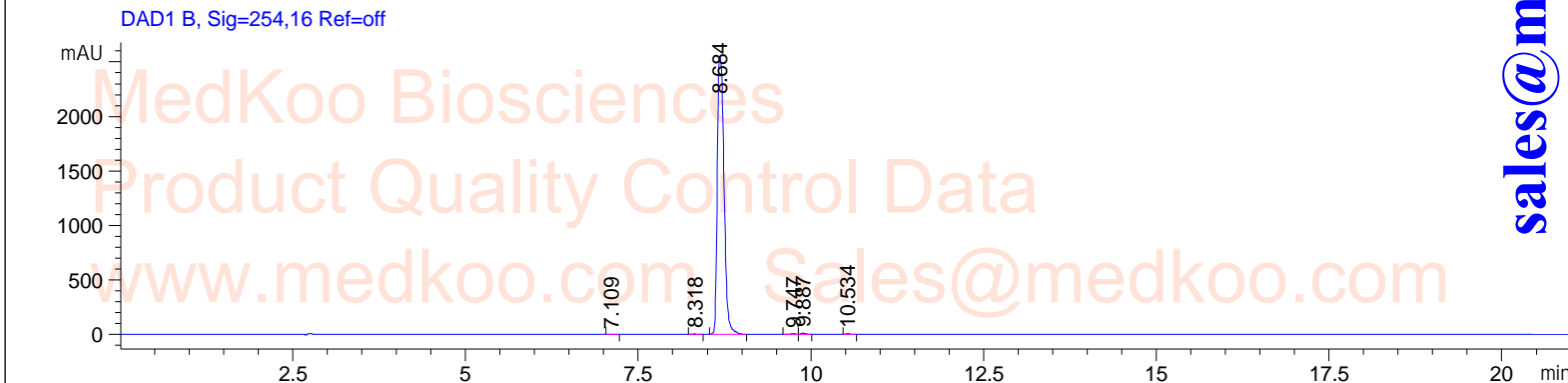


12 11 10 9 8 7 6 5 4 3 2 1 0 ppm

0.99 1.01 1.01 1.00 1.00 1.00 1.01 1.04 1.02 1.02 1.01 0.98 1.00 1.04 1.04 1.01 2.02 2.96 1.25 1.05 3.00 3.00

Vamorolone HPLC Analysis

User Instrument 1 Sequence : 7
Instrument Injection : 1 Local : vial 54
Analysis Method : C:\CHEM32\1\METHODS\TEST-KR.M



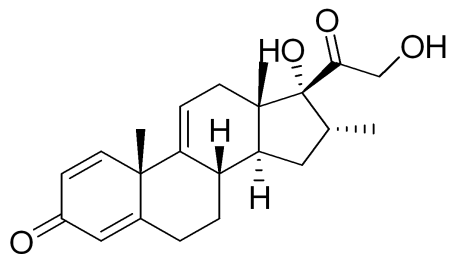
Area Percent Report

Sort By : Signal
Multiplier : 1.0000
Dilution : 1.0000
Use Multiplier & Dilution Factor with ISTDs

Signal 2: DAD1 B, Sig=254,16 Ref=off

Peak #	Ret. Time [min]	Type	Width [min]	Area [mAU*s]	Height [mAU]	Area %
1	7.109	BB	0.0666	16.43647	3.79277	0.0950
2	8.318	BB	0.0756	18.55966	3.63218	0.1073
3	8.684	BB	0.1064	1.71616e4	2554.23535	99.2400
4	9.747	BV	0.0861	25.84069	4.30203	0.1494
5	9.887	VV	0.0752	44.80727	9.13831	0.2591
6	10.534	VB	0.0823	25.78334	4.68114	0.1491

Total: 1.72930e4 2579.78178



MedKoo Cat#: 327030

Name: Vamorolone

CAS#: 13209-41-1

Lot#: BBC70224

Chemical Formula: C₂₂H₂₈O₄

Exact Mass: 356.1988

Molecular Weight: 356.46

Vamorolone LC/MS Analysis

Tgt Mass (EZX) :

Sample Name : VBP-15

Location : Vial 36

Acq. Operator :

Inj : 1

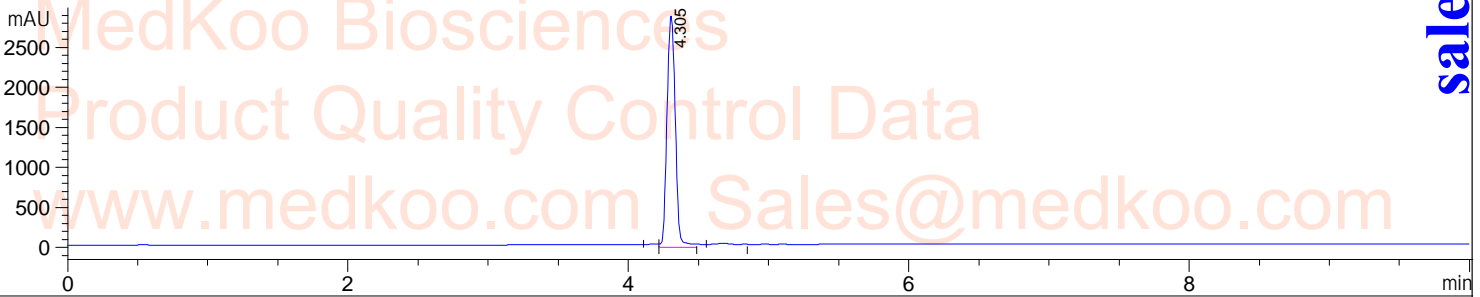
Spec. Reported : MS Integration

Inj Volume : 1 ul

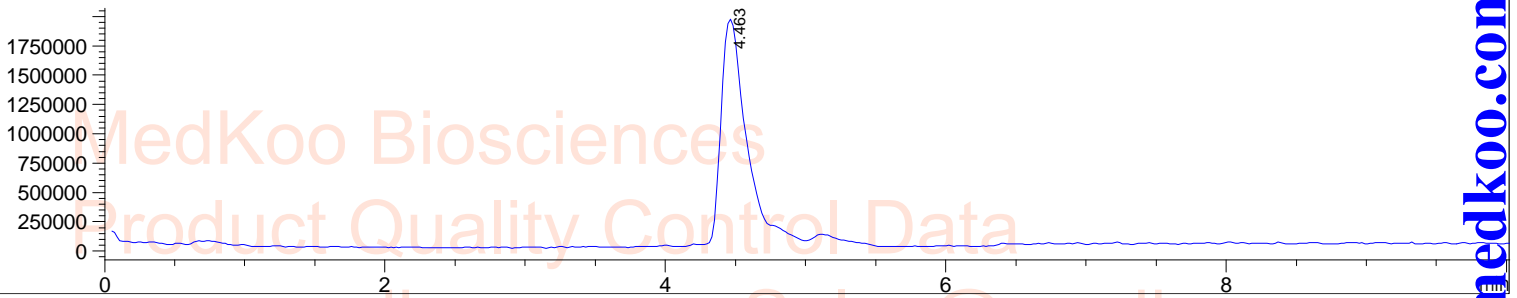
Acq. Method : C:\Chem32\1\DATA\TEST KR NEG_LC.M

Analysis Method : C:\Chem32\1\METHODS\TEST KR POS_LC.M

DAD1 A, Sig=254,4 Ref=off



MSD1 TIC, MS File ES-API, Neg, Scan, Frag: 70



Ret. Time: 4.46

<<<< POSITIVE SPECTRA >>>>

ES-API Positive

