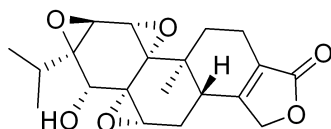


4.882
4.878
4.838
4.834
4.795
4.792
4.755
4.751
4.748
4.713
4.694
3.888
3.880
3.554
3.547
3.380
3.366
3.356
3.337
3.320
2.619
2.610
2.603
2.587
2.511
2.507
2.502
2.498
2.494
2.231
2.216
2.201
2.193
2.178
2.163
2.156
2.138
2.121
2.103
2.087
1.986
1.977
1.970
1.962
1.858
1.825
1.821
1.788
1.331
1.327
1.310
1.299
1.276
1.261
1.247

Triptolide HNMR Analysis, Solvent: DMSO-d6

MedKoo Biosciences
Product Quality Control Data

www.medkoo.com Sales@medkoo.com



MedKoo Cat#: 406463

Name: Triptolide

CAS#: 38748-32-2

Lot#: BBC50618

Chemical Formula: C₂₀H₂₄O₆

Exact Mass: 360.15729

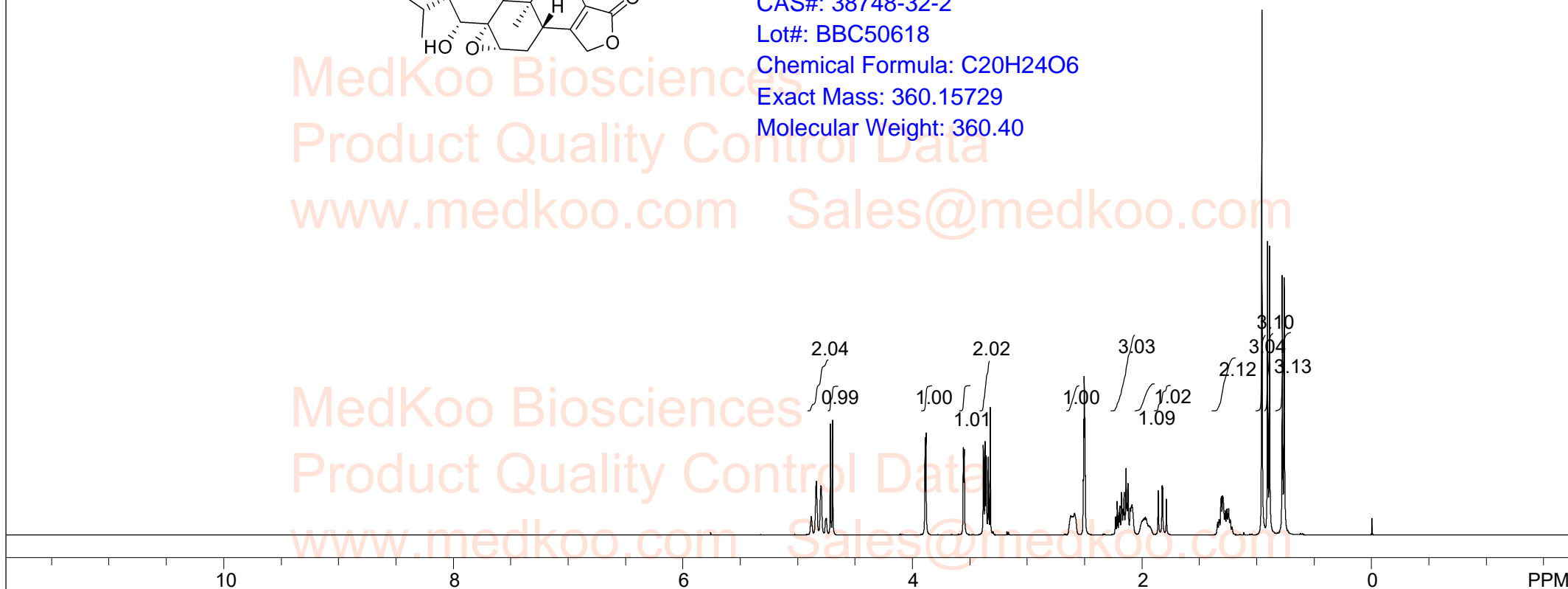
Molecular Weight: 360.40

MedKoo Biosciences
Product Quality Control Data

www.medkoo.com Sales@medkoo.com

MedKoo Biosciences
Product Quality Control Data

www.medkoo.com Sales@medkoo.com



spect, DMSO,

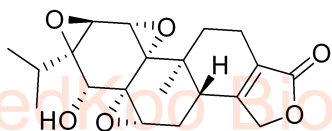
F1: 400.132	F2: 1.000	SW1: 8013	OF1: 2468.7	PTS1d: 65536
EX: zg30	PW: 14.8 usec	PD: 1.0 sec	NA: 16	LB: 0.0

Nuts - \$pdata

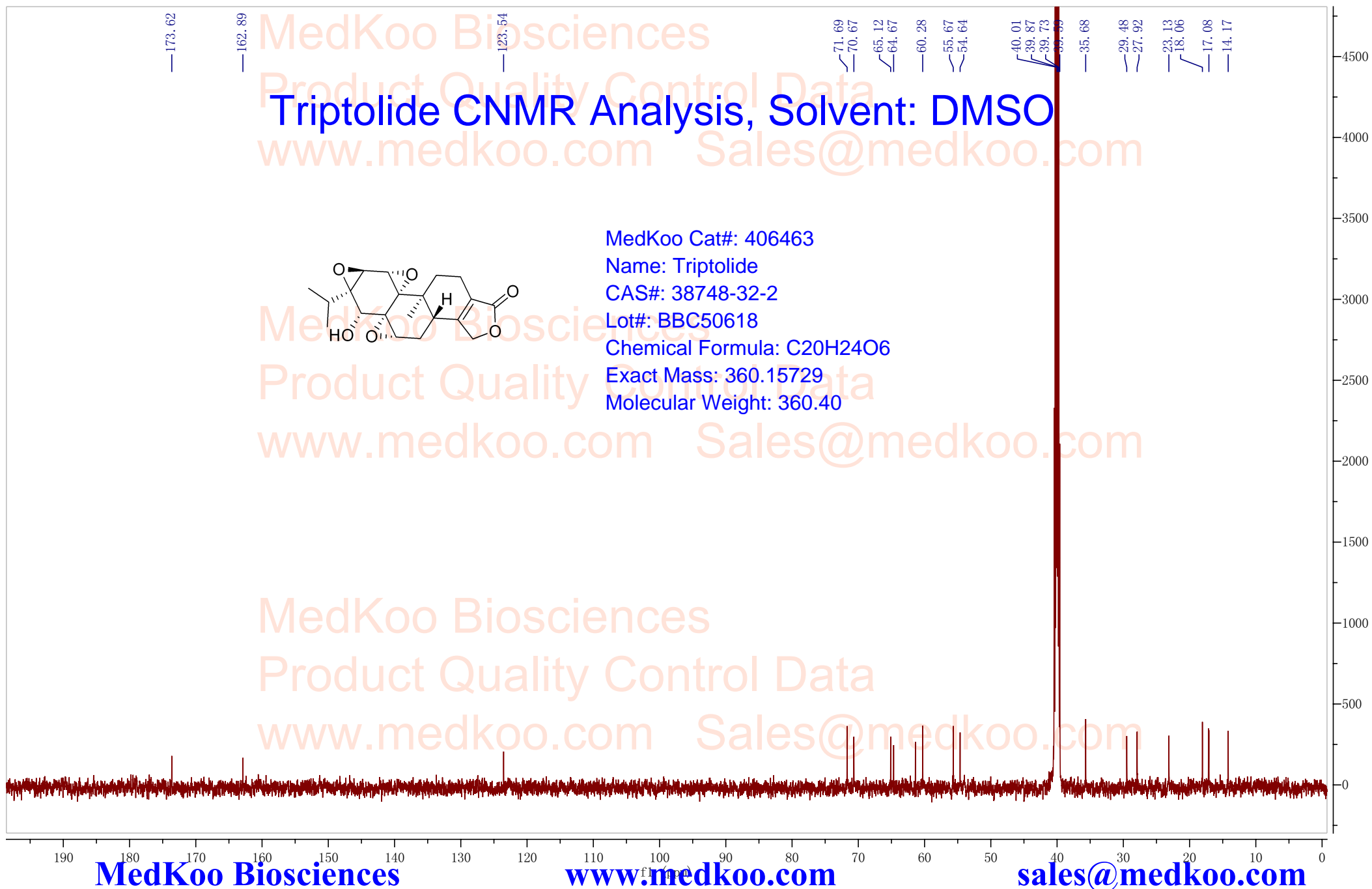
Bruker Avance 600
sample: leigong-J

probe: 13C-1H DUL TE: 300K
solvent: DMSO spectrum: 13C

Triptolide CNMR Analysis, Solvent: DMSO



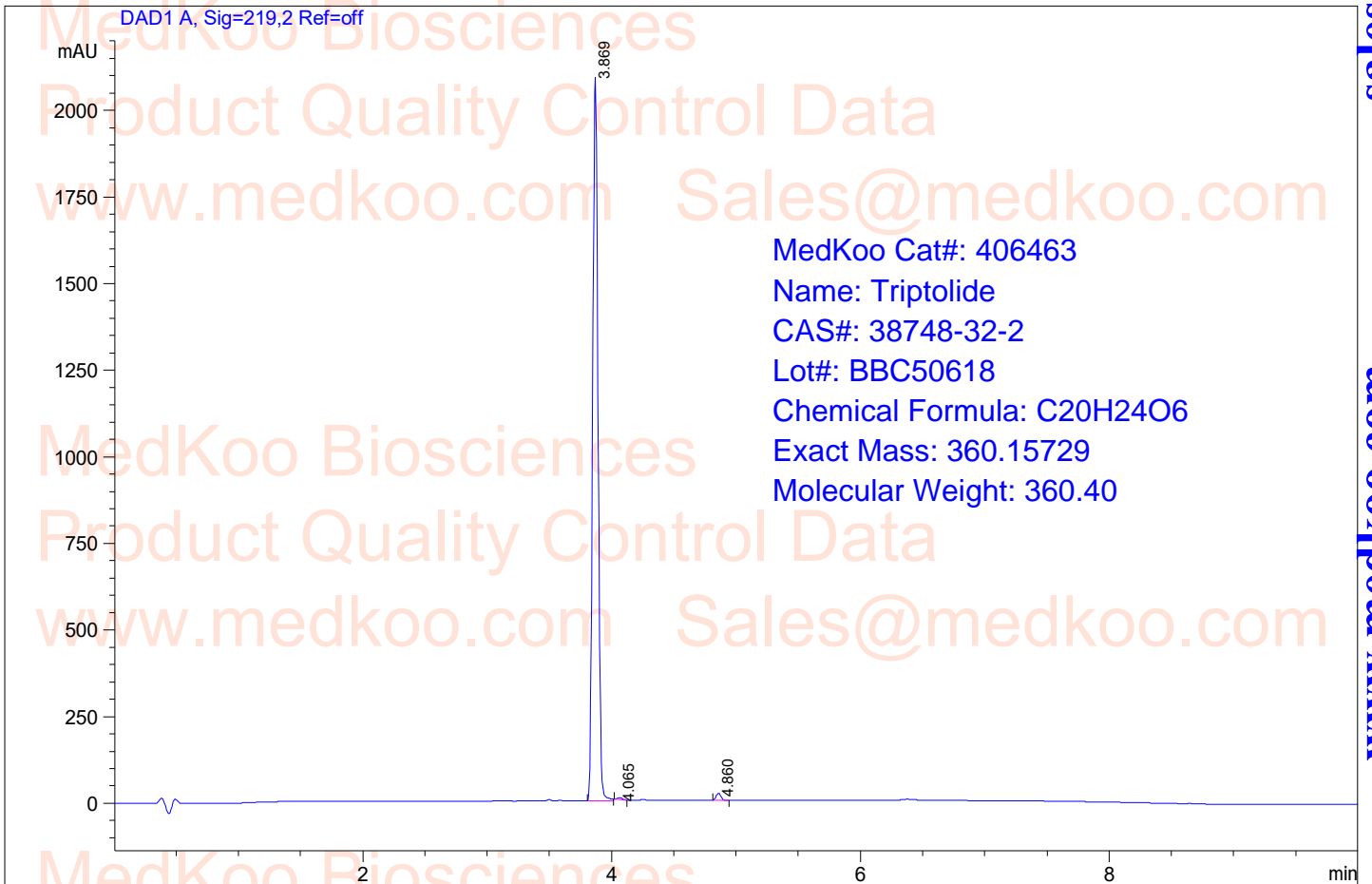
MedKoo Cat#: 406463
Name: Triptolide
CAS#: 38748-32-2
Lot#: BBC50618
Chemical Formula: C₂₀H₂₄O₆
Exact Mass: 360.15729
Molecular Weight: 360.40



Triptolide HPLC Analysis

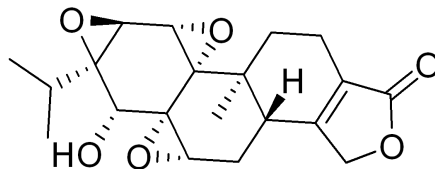
Sample Name : 612-SM
Acq. Operator : 9
Spec. Reported : Integration

Seq. Line : 0
Location : P2-D-03
Inj : 0
Inj Volume : 5 ul



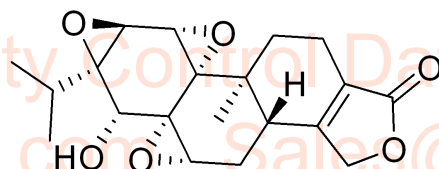
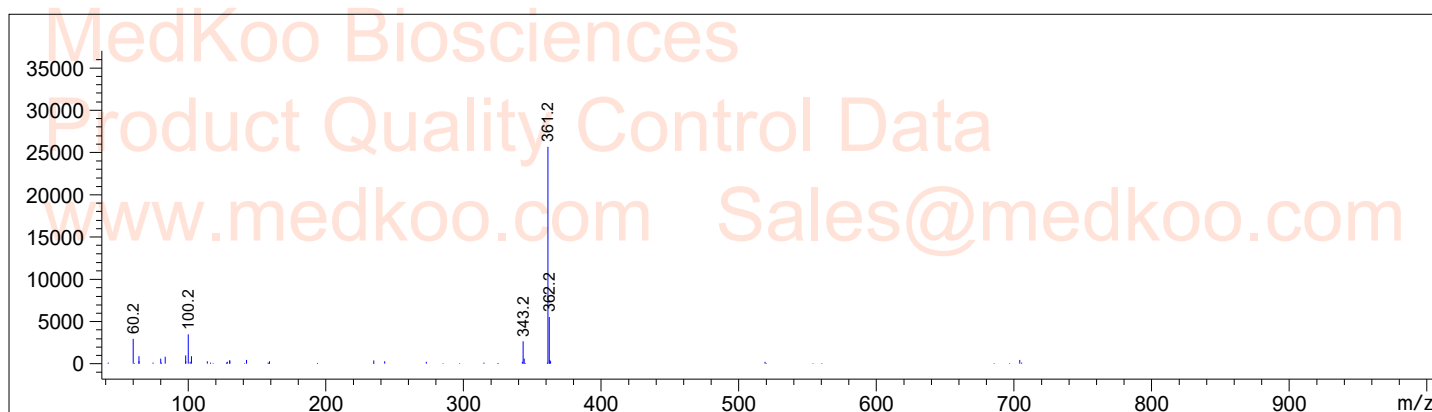
Integration Results for DAD1 A, Sig=219,2 Ref=off

RetTim	Width	Area	Height	Area%
3.87	0.05	6282.43	2099.48	98.93
4.06	0.05	15.94	5.20	0.25
4.86	0.04	52.13	19.34	0.82



Triptolide MS Analysis

Sample Name : A Seq. Line : 0
Acq. Operator : 8



MedKoo Cat#: 406463

Name: Triptolide

CAS#: 38748-32-2

Lot#: BBC50618

Chemical Formula: C₂₀H₂₄O₆

Exact Mass: 360.15729

Molecular Weight: 360.40