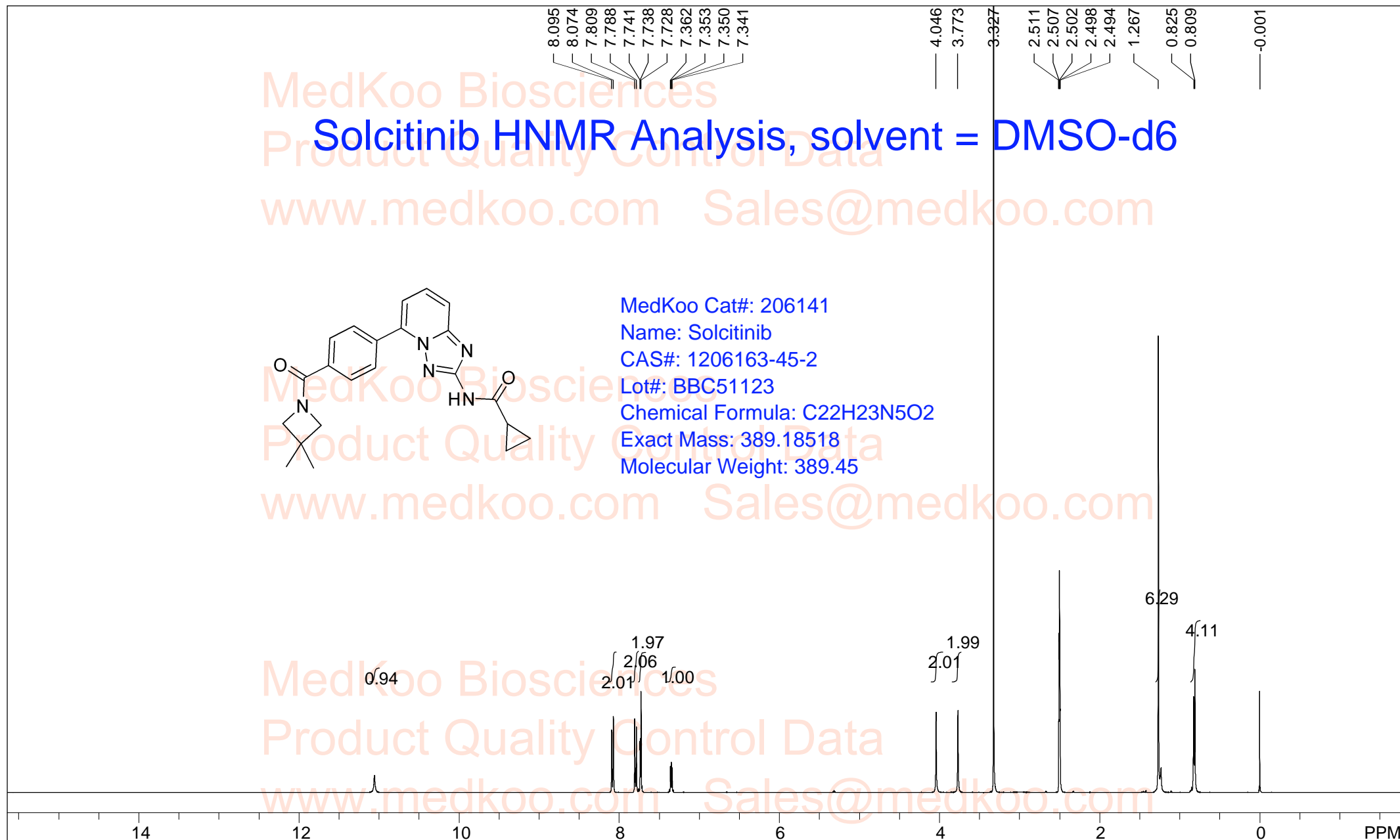
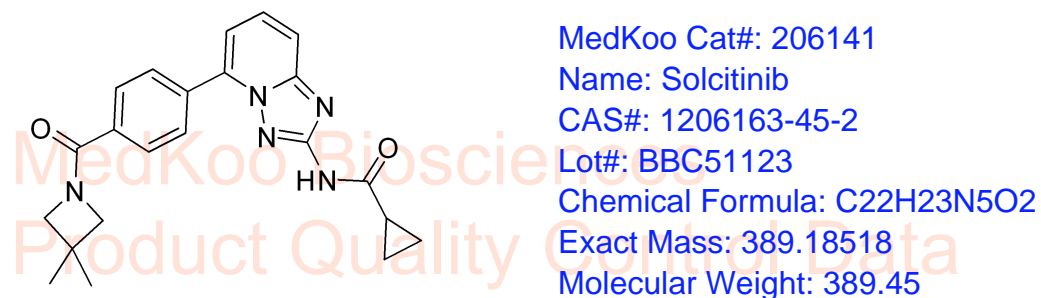


Solcitinib HNMR Analysis, solvent = DMSO-d6

MedKoo Biosciences
Product Quality Control Data
www.medkoo.com Sales@medkoo.com



spect, DMSO,

F1: 400.132

F2: 1.000

SW1: 8013

OF1: 2468.8

PTS1d: 65536

EX: zg30

PW: 14.8 usec

PD: 1.0 sec

NA: 16

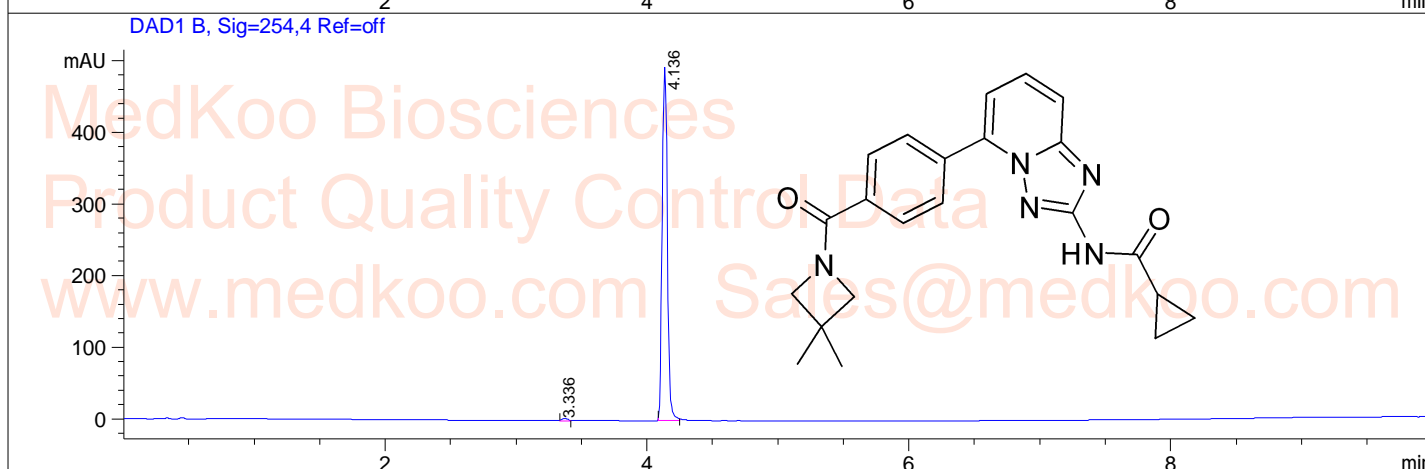
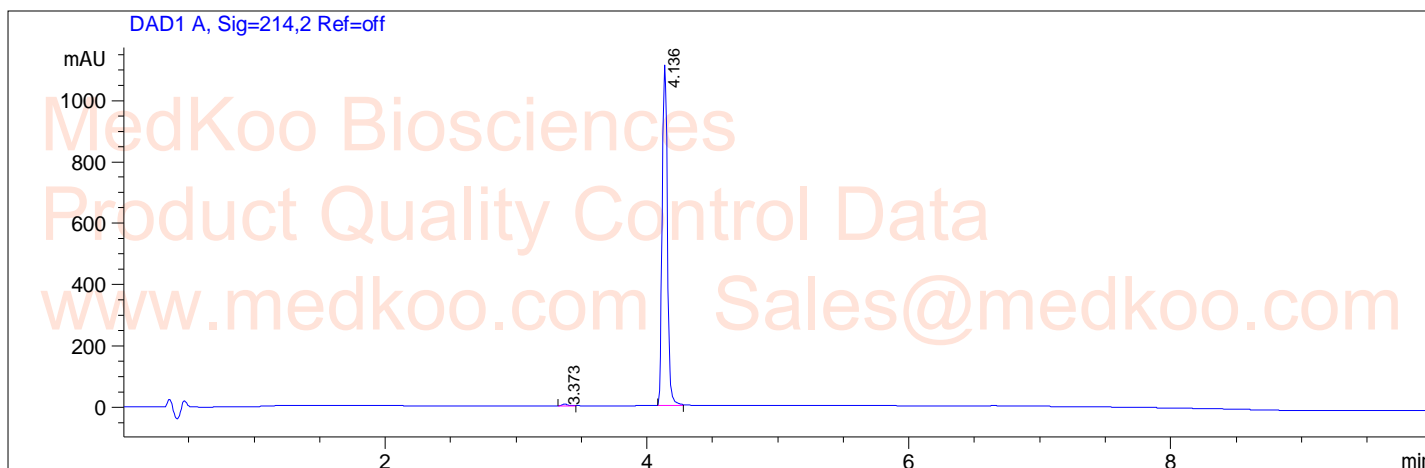
LB: 0.0

Nuts - \$pdata

Solcitinib HPLC Analysis

Sample Name : SM
Acq. Operator : 5
Spec. Reported : Integration

Seq. Line : 0
Location : P2-C-07
Inj : 0
Inj Volume : 5 ul



Integration Results for DAD1 A, Sig=214,2 Ref=off

RetTim	Width	Area	Height	Area%
3.37	0.05	17.60	5.91	0.57
4.14	0.04	3096.35	1110.99	99.43

Integration Results for DAD1 B, Sig=254,4 Ref=off

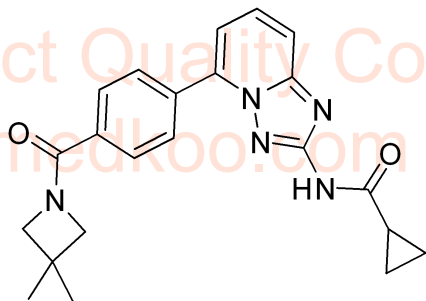
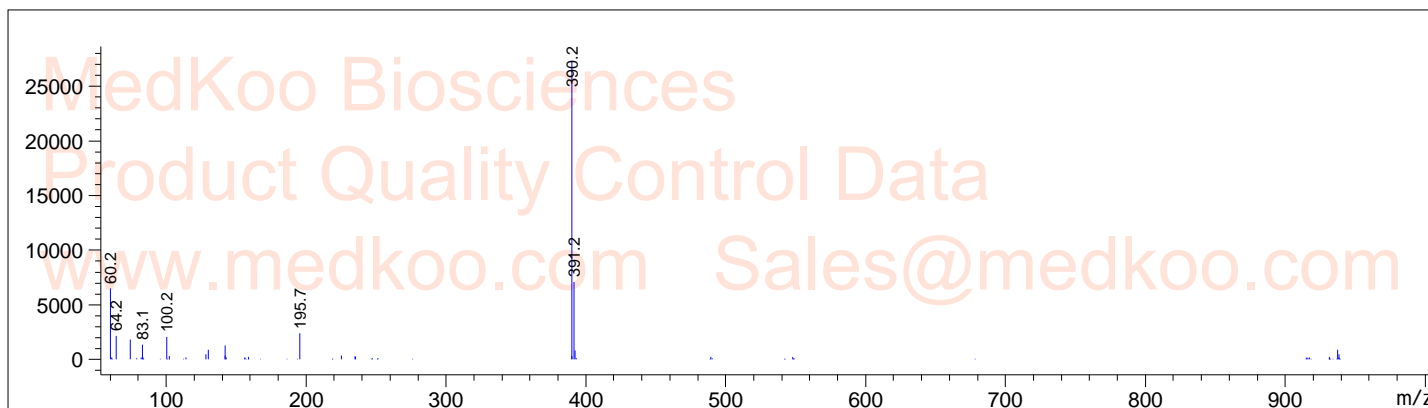
RetTim	Width	Area	Height	Area%
3.34	0.06	13.88	1.42	1.00
4.14	0.04	1370.28	493.35	99.00

MedKoo Cat#: 206141
Name: Solcitinib
CAS#: 1206163-45-2
Lot#: BBC51123
Chemical Formula: C₂₂H₂₃N₅O₂
Exact Mass: 389.18518
Molecular Weight: 389.45

Solcitinib MS Analysis

Sample Name : 5
Acq. Operator : 8

Seq. Line : 0



MedKoo Cat#: 206141

Name: Solcitinib

CAS#: 1206163-45-2

Lot#: BBC51123

Chemical Formula: C₂₂H₂₃N₅O₂

Exact Mass: 389.18518

Molecular Weight: 389.45

MedKoo Biosciences

Product Quality Control Data

www.medkoo.com Sales@medkoo.com

sales@medkoo.com

www.medkoo.com

MedKoo Biosciences