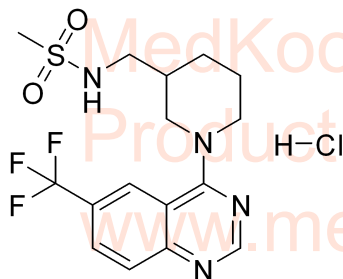


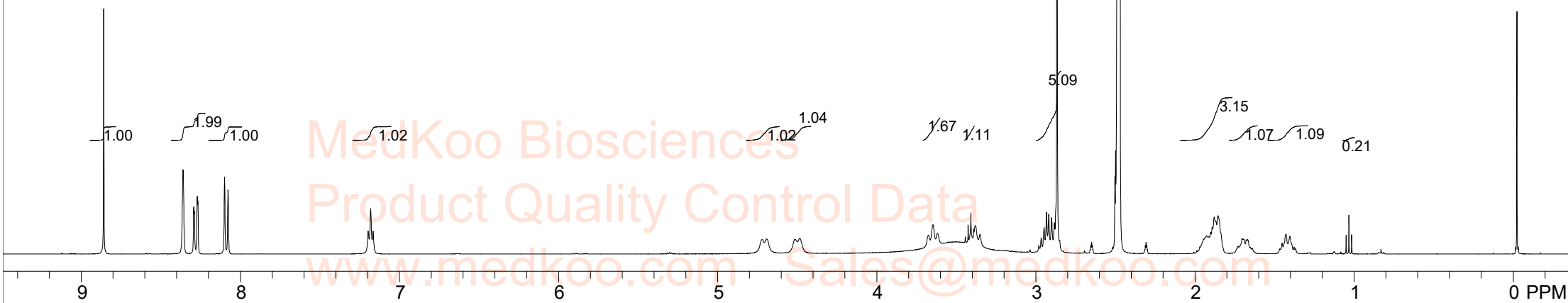
8.857 8.360 8.292 8.288 8.270 8.267 8.098 8.077 7.195 7.180 7.164 3.675 4.482 3.647 3.620 3.443 3.426 3.408 3.391 3.381 3.351 2.966 2.947 2.933 2.919 2.900 2.883 2.867 2.503 2.499 2.490 2.485 2.481 2.476 2.471 1.927 1.911 1.901 1.891 1.879 1.869 1.854 1.703 1.427 1.403 1.050 1.033 1.015 -0.023

# SRI-37330 HCl HNMR Analysis, Solvent: DMSO

MedKoo Biosciences  
 Product Quality Control Data  
 www.medkoo.com Sales@medkoo.com



MedKoo Cat#: 463768  
 Name: SRI-37330 HCl  
 CAS#: 2322245-49-6 (HCl)  
 Lot#: S22S07C31  
 Chemical Formula: C16H20ClF3N4O2S  
 Molecular Weight: 424.87



SRI-37330 HCl, d6-DMSO, 400MHz

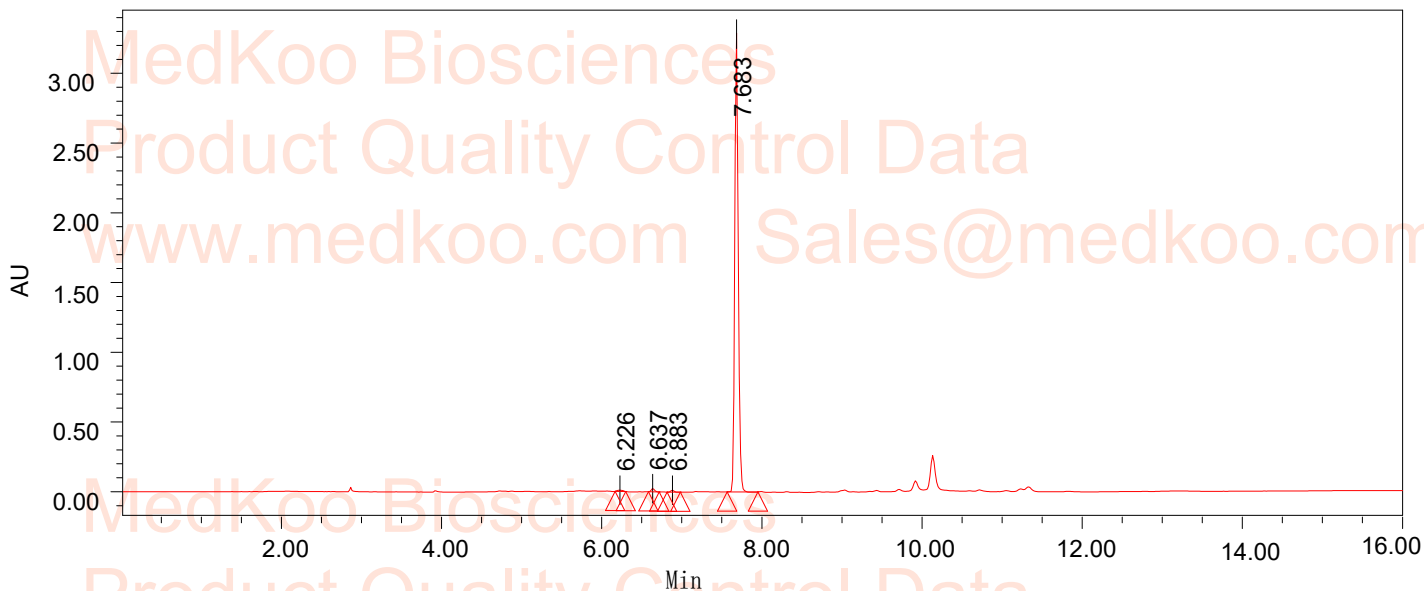
F1: 399.820	F2: 100.544	SW1: 6410	OF1: 2398.9	PTS1d: 16384
EX: s2pul	PW: 9.2 usec	PD: 5.0 sec	NA: 16	LB: 0.0

Nuts - \$PROTON\_01.fid

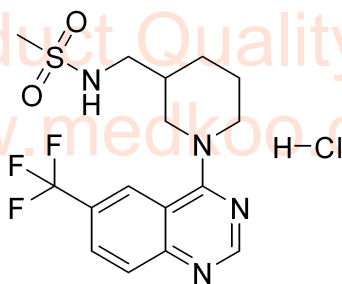
# SRI-37330 HCl HPLC Analysis

Sample: SRI-37330 HCl  
Name: Sample  
Type: Vial: 1: A, 3  
Injection: 1  
Inj. Volume: 2.50ul  
Run Time: 16 Minutes

User: System  
Acq. Method: 85MeOH\_20H2O  
Method: SRI-37330 HCl  
Channel: W2996 220.0nm-1.2  
Channel: W2996 PDA 220.0 nm (1.2)



Peak #	Ret. Time (Min)	Area (uV*s)	Height (uV)	%Area
1	6.226	44654	8550	0.45
2	6.637	66005	21273	0.66
3	6.883	37927	12455	0.38
4	7.683	9872233	3029051	98.52



MedKoo Cat#: 463768  
Name: SRI-37330 HCl  
CAS#: 2322245-49-6 (HCl)  
Lot#: S22S07C31  
Chemical Formula: C<sub>16</sub>H<sub>20</sub>ClF<sub>3</sub>N<sub>4</sub>O<sub>2</sub>S  
Molecular Weight: 424.87

# SRI-37330 HCl MS Analysis

Compound ID : YCSW-20306  
Sample ID : CAS00077-YCSW-20306-1  
Location : P1-C-05  
Injection volume : 1.000  
Data Filename : D:\DATA\CAS00077-YCSW-20306-1.D

