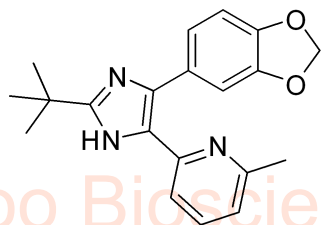


# SB505124 HNMR Analysis, Solvent:MeOD

Product Quality Control Data

www.medkoo.com Sales@medkoo.com



MedKoo Cat#: 406135

Name: SB505124

CAS#: 694433-59-5

Lot#: T9D11P27

Chemical Formula: C<sub>20</sub>H<sub>21</sub>N<sub>3</sub>O<sub>2</sub>

Exact Mass: 335.16338

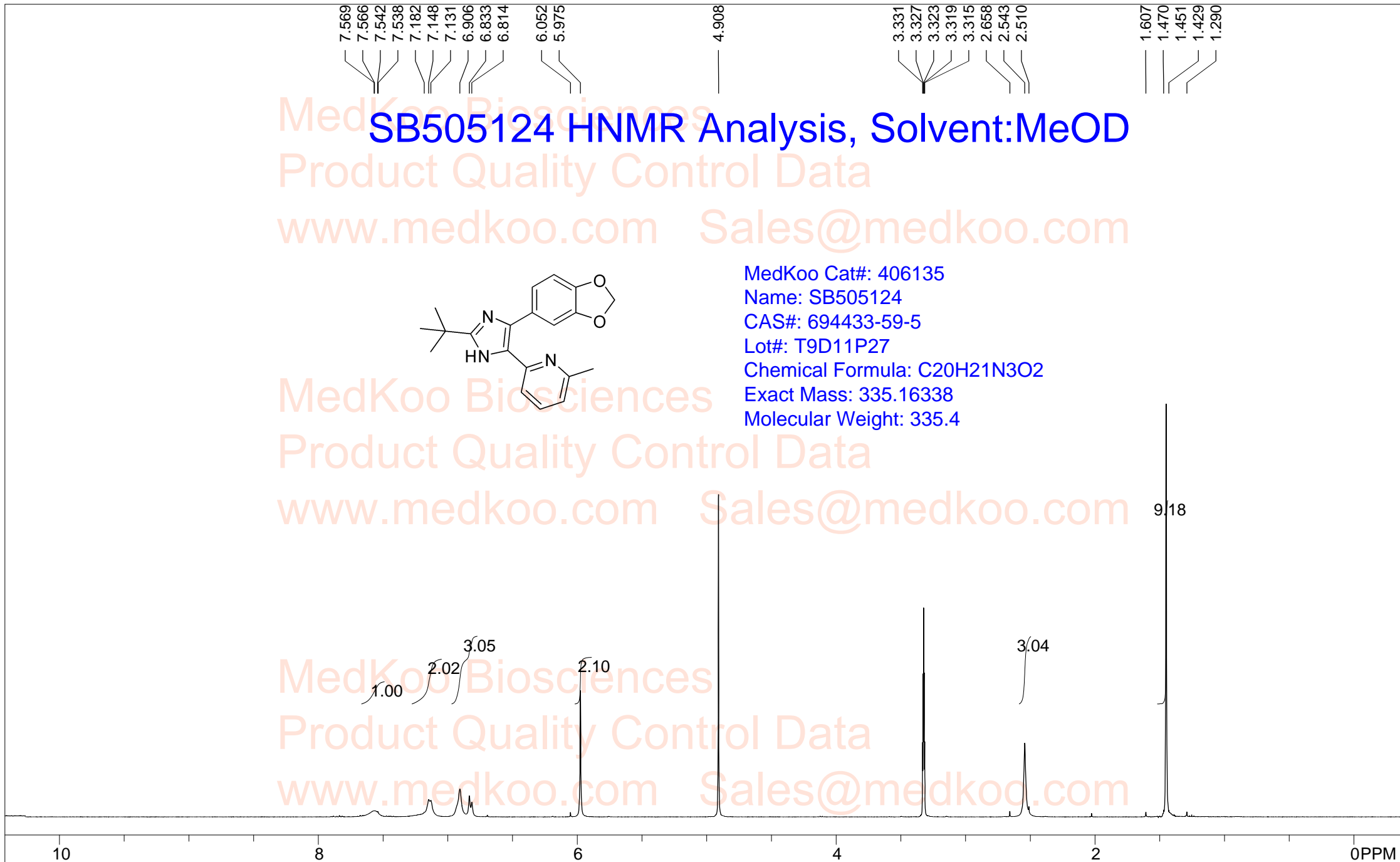
Molecular Weight: 335.4

Product Quality Control Data

www.medkoo.com Sales@medkoo.com

Product Quality Control Data

www.medkoo.com Sales@medkoo.com



NMRB003, MeOD,

F1: 400.232	F2: 1.000	SW1: 8224	OF1: 2471.0	PTS1d: 32768
EX: zg30	www.medkoo.com	PD: 1.00 sec	LB: 0.0	Nuts - \$pdata

MedKoo Biosciences sales@medkoo.com

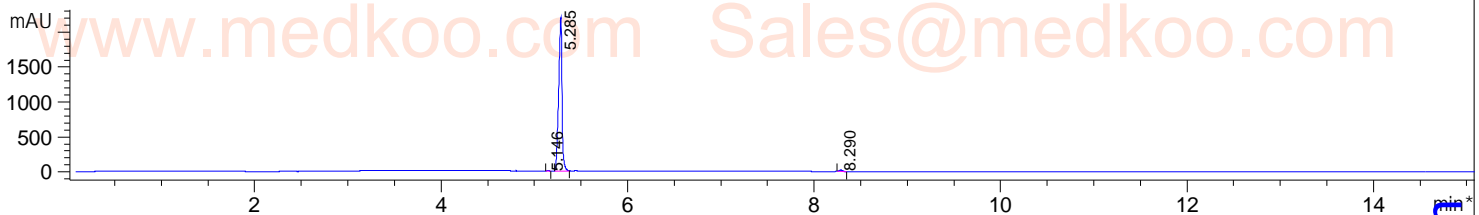
# SB505124 HPLC Analysis

File D:\DATA.D

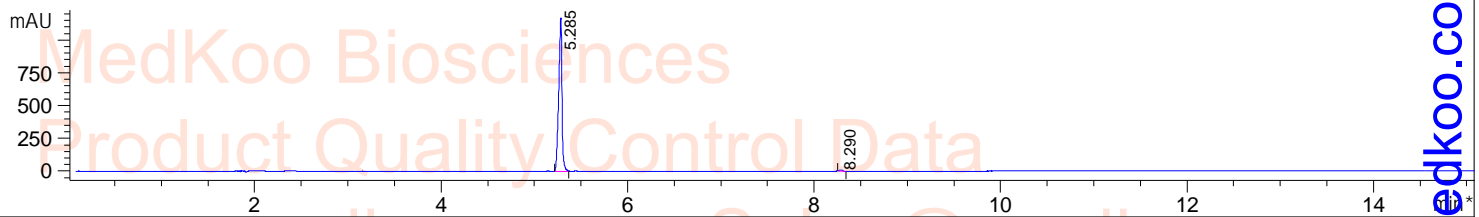
Tgt Mass (EZX) :  
Sample Name : SB505124 Location : P1-D-03  
Acq. Operator : Inj : 1  
Spec. Reported : MS Integration Inj Volume : 2 ul  
Acq. Method : D:\METHODS\1-POS-15MIN.M  
Analysis Method : D:\METHODS\1-POS-15MIN.M  
Sample Info : Easy-Access Method: '1-POS-15MIN.M'  
Method Info : Mobile Phase: A: water(0.01%TFA) B: ACN(0.01%TFA)  
Gradient: 5%B increase to 95%B within 8.0 min, 95%B for 7.0 min.  
Flow Rate: 1.0ml/min  
Column: Sunfire C18, 4.6\*150mm, 3.5um  
Column Temperature: 40 C  
Detection: UV(214, 4nm) and MS(ESI, Pos mode, 110 to 1500 amu)

sales@medkoo.com

\*DAD1 A, Sig=214,4 Ref=off



\*DAD1 B, Sig=254,4 Ref=off

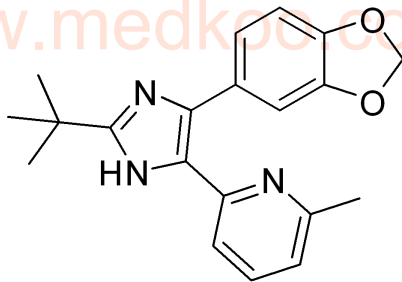


Integration Results for DAD1 A, Sig=214,4 Ref=off

RetTim	Width	Area	Height	Area%
5.15	0.02	9.61	6.86	0.17
5.29	0.04	5472.80	2201.98	98.98
8.29	0.03	46.73	20.75	0.85

Integration Results for DAD1 B, Sig=254,4 Ref=off

RetTim	Width	Area	Height	Area%
5.29	0.03	2831.24	1174.61	99.29
8.29	0.03	20.25	9.71	0.71



MedKoo Cat#: 406135

Name: SB505124

CAS#: 694433-59-5

Lot#: T9D11P27

Chemical Formula: C<sub>20</sub>H<sub>21</sub>N<sub>3</sub>O<sub>2</sub>

Exact Mass: 335.16338

Molecular Weight: 335.4

www.medkoo.com

MedKoo Biosciences

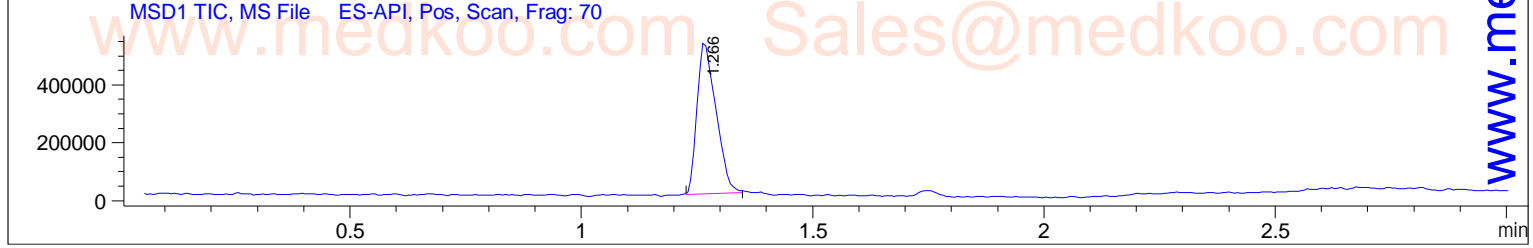
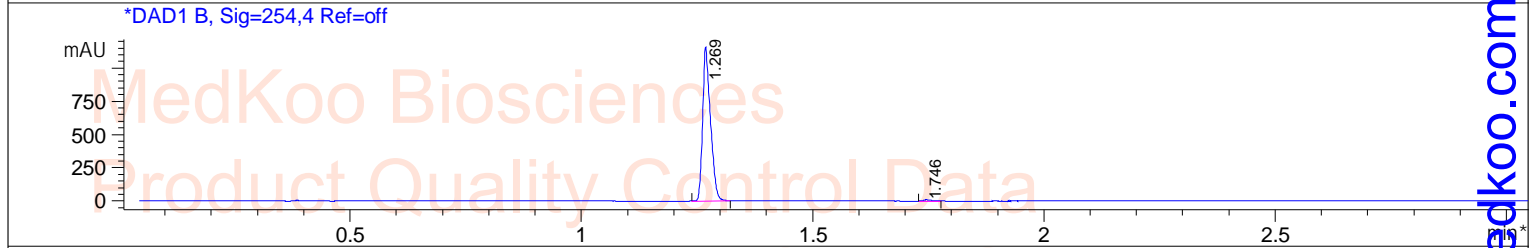
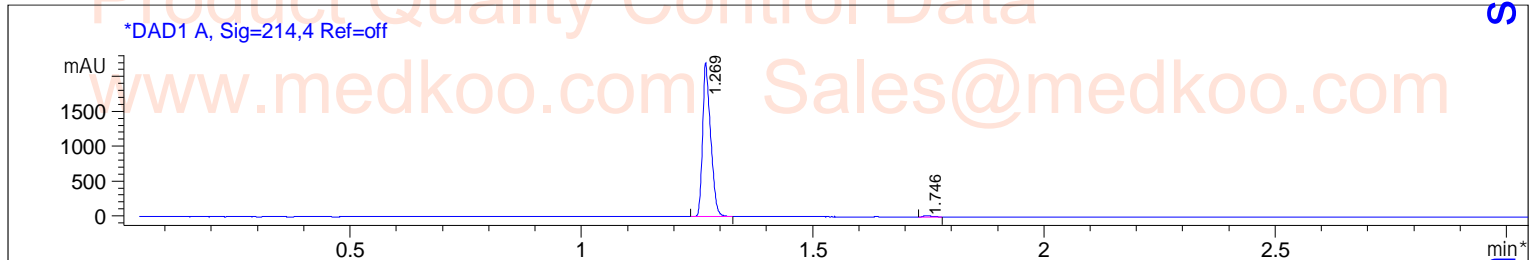
# SB505124 LC/MS Analysis

File D:\DATA.D

Tgt Mass (EZX) :

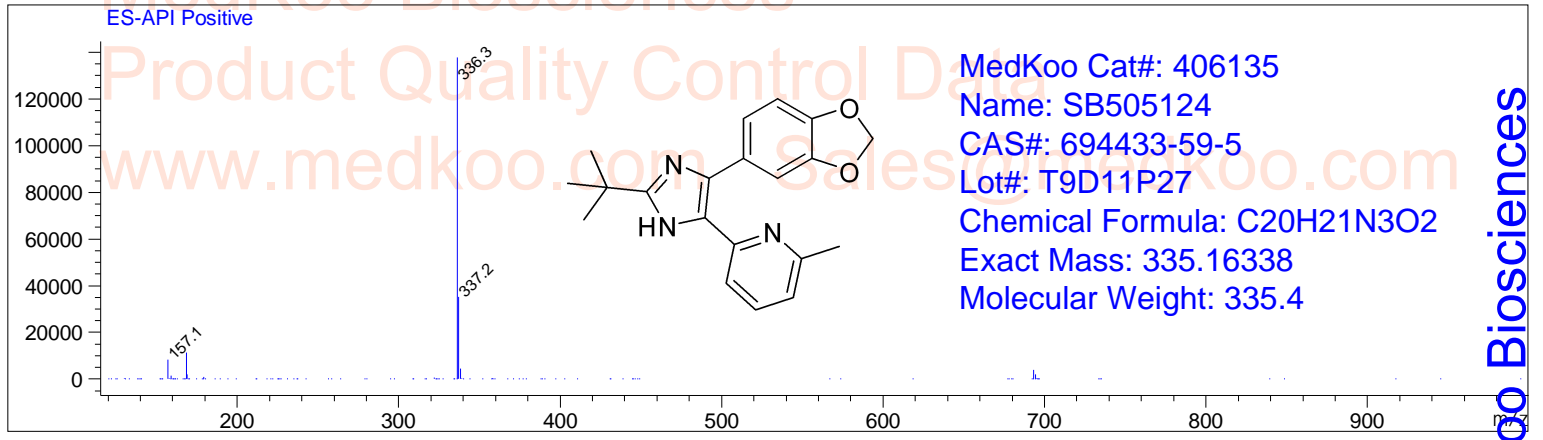
Sample Name : SB505124 Location : P1-B-04  
Acq. Operator : Inj : 1  
Spec. Reported : MS Integration Inj Volume : 2 ul  
Acq. Method : D:\METHODS\1-POS-3MIN.M  
Analysis Method : D:\METHODS\1-POS-3MIN.M  
Sample Info : Easy-Access Method: '1-POS-3MIN.M'  
Method Info : Mobile Phase: A: water (0.01%TFA) B: ACN (0.01%TFA)  
Gradient: 5%B increase to 95%B within 1.3 min, 95%B for 1.7 min.  
Flow Rate: 2.0ml/min  
Column: Sunfire C18, 4.6\*50mm, 3.5um  
Column Temperature: 50 C  
Detection: UV (214, 4nm) and MS (ESI, Pos mode, 110 to 1000 amu)

sales@medkoo.com



www.medkoo.com

Ret. Time: 1.27 <<<< POSITIVE SPECTRA >>>>



MedKoo Biosciences