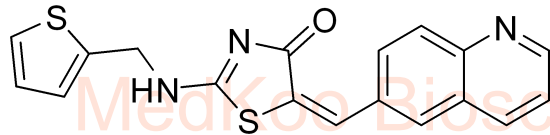


10.245  
8.952  
8.945  
8.942  
8.477  
8.449  
8.428  
8.251  
8.185  
8.133  
8.111  
8.003  
7.998  
7.979  
7.940  
7.935  
7.918  
7.914  
7.829  
7.814  
7.609  
7.599  
7.588  
7.578  
7.509  
7.496  
7.142  
7.135  
7.037  
7.028  
7.025  
7.016  
4.945  
4.822  
4.764  
3.336  
2.885  
2.727  
2.500  
-0.009

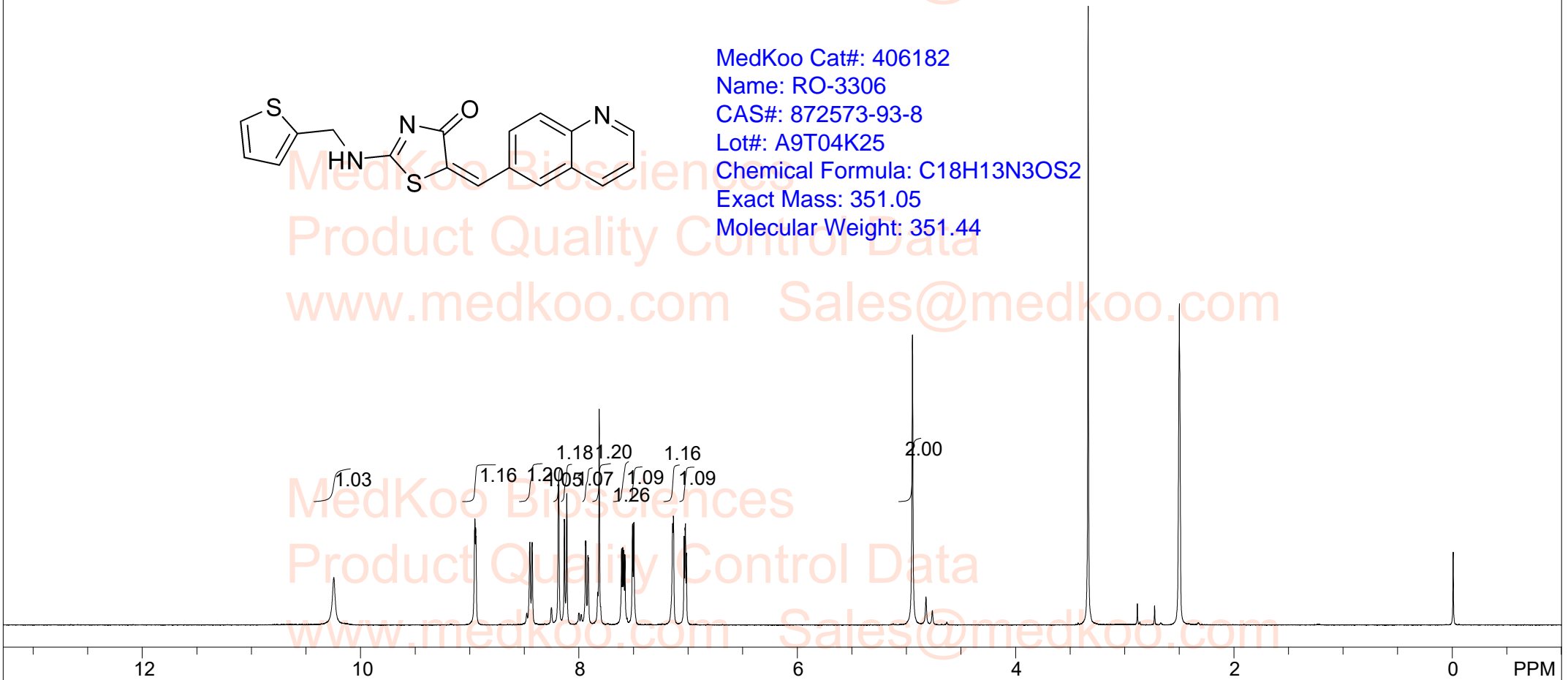
# RO-3306 HNMR Analysis, Solvent: DMSO

www.medkoo.com Sales@medkoo.com



MedKoo Cat#: 406182  
Name: RO-3306  
CAS#: 872573-93-8  
Lot#: A9T04K25  
Chemical Formula: C18H13N3OS2  
Exact Mass: 351.05  
Molecular Weight: 351.44

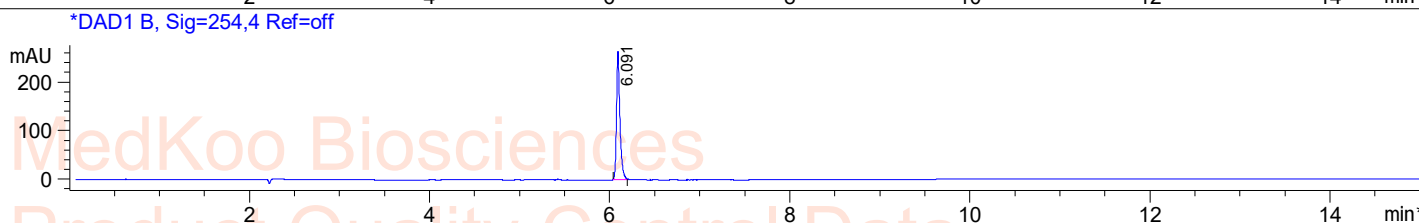
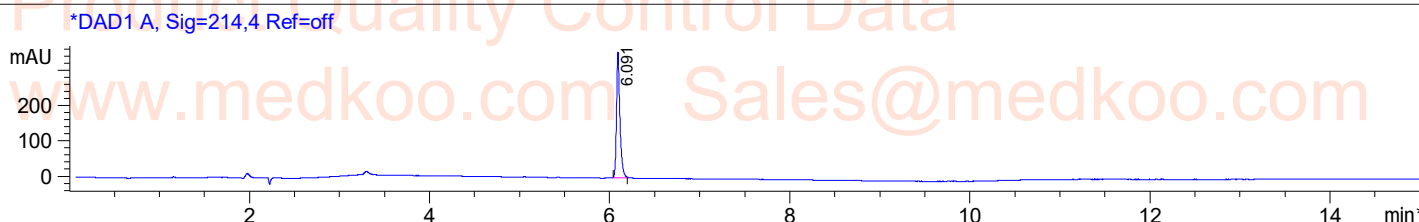
www.medkoo.com Sales@medkoo.com



DMSO,							
F1: 400.132	F2: 1.000	SW1: 8224		OF1: 2467.7		PTS1d: 32768	
EX: zg30		PW: 13.0 usec	PD: 1.0 sec	NA: 8	LB: 0.0		Nuts - \$pdata

# RO-3306 HPLC Analysis

Sample Name : 872573-93-8  
Acq. Method : D:\METHODS\2-POS-15MIN.M  
Analysis Method : D:\METHODS\2-POS-15MIN.M  
Sample Info : Easy-Access Method: '2-POS-15MIN'  
Method Info : Mobile Phase : A:water(0.01%TFA) B:ACN(0.01%TFA)  
Gradient:5%B increase to 95%B within 7.5min,95%B for 7.5min.  
Flow Rate :1.0ml/min  
Column :Sunfire, 150\*4.6mm, 3.5um  
Column Temperature:45C

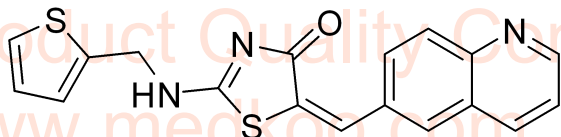


Integration Results for DAD1 A, Sig=214,4 Ref=off

RetTim	Width	Area	Height	Area%
6.09	0.04	937.87	356.84	100.00

Integration Results for DAD1 B, Sig=254,4 Ref=off

RetTim	Width	Area	Height	Area%
6.09	0.04	694.53	264.88	100.00



MedKoo Cat#: 406182

Name: RO-3306

CAS#: 872573-93-8

Lot#: A9T04K25

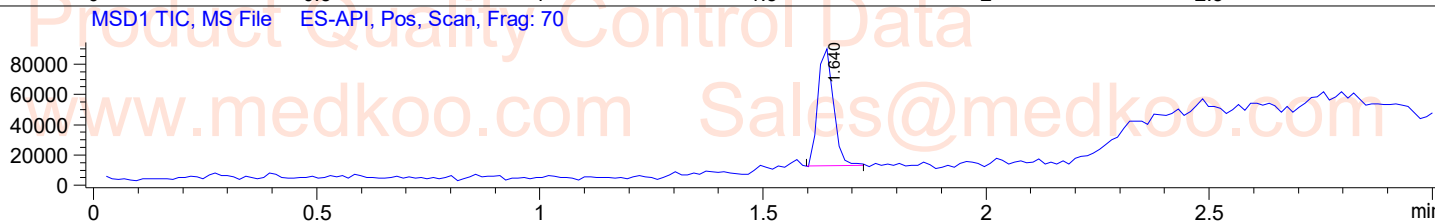
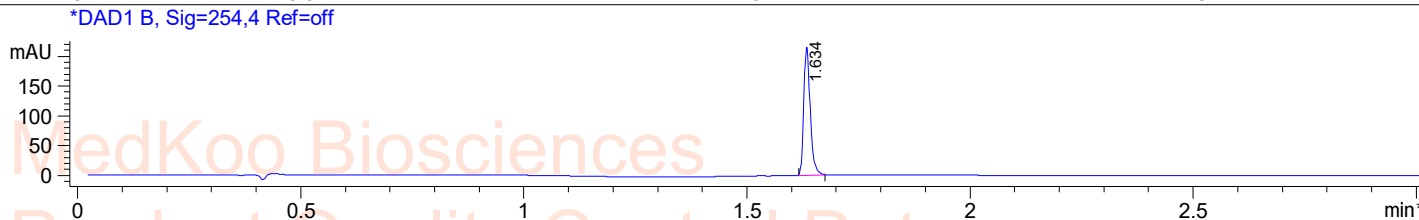
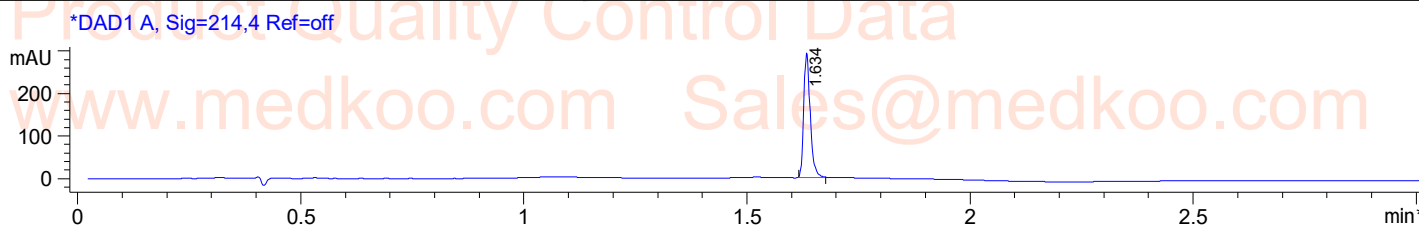
Chemical Formula: C<sub>18</sub>H<sub>13</sub>N<sub>3</sub>O<sub>2</sub>S

Exact Mass: 351.05

Molecular Weight: 351.44

# RO-3306 LC/MS Analysis

Sample Name : 872573-93-8  
Acq. Method : D:\METHODS\1-POS-3MIN.M  
Analysis Method : D:\METHODS\1-POS-3MIN.M  
Sample Info : Easy-Access Method: '1-POS-3MIN'  
Method Info : Mobile Phase : A:water(0.01%TFA) B:ACN(0.01%TFA)  
Gradient:5%B for 0.2min,increase to 95%B within 1.5min,95%B for 1.5min,  
back to 5%B within 0.01min  
Flow Rate :2ml/min  
Column :Sunfire, 50\*4.6mm,3.5um  
Column Temperature:50C



Ret. Time: 1.64

<<<< POSITIVE SPECTRA

