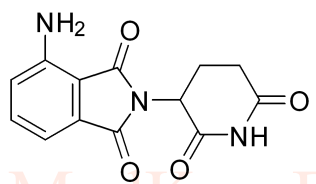
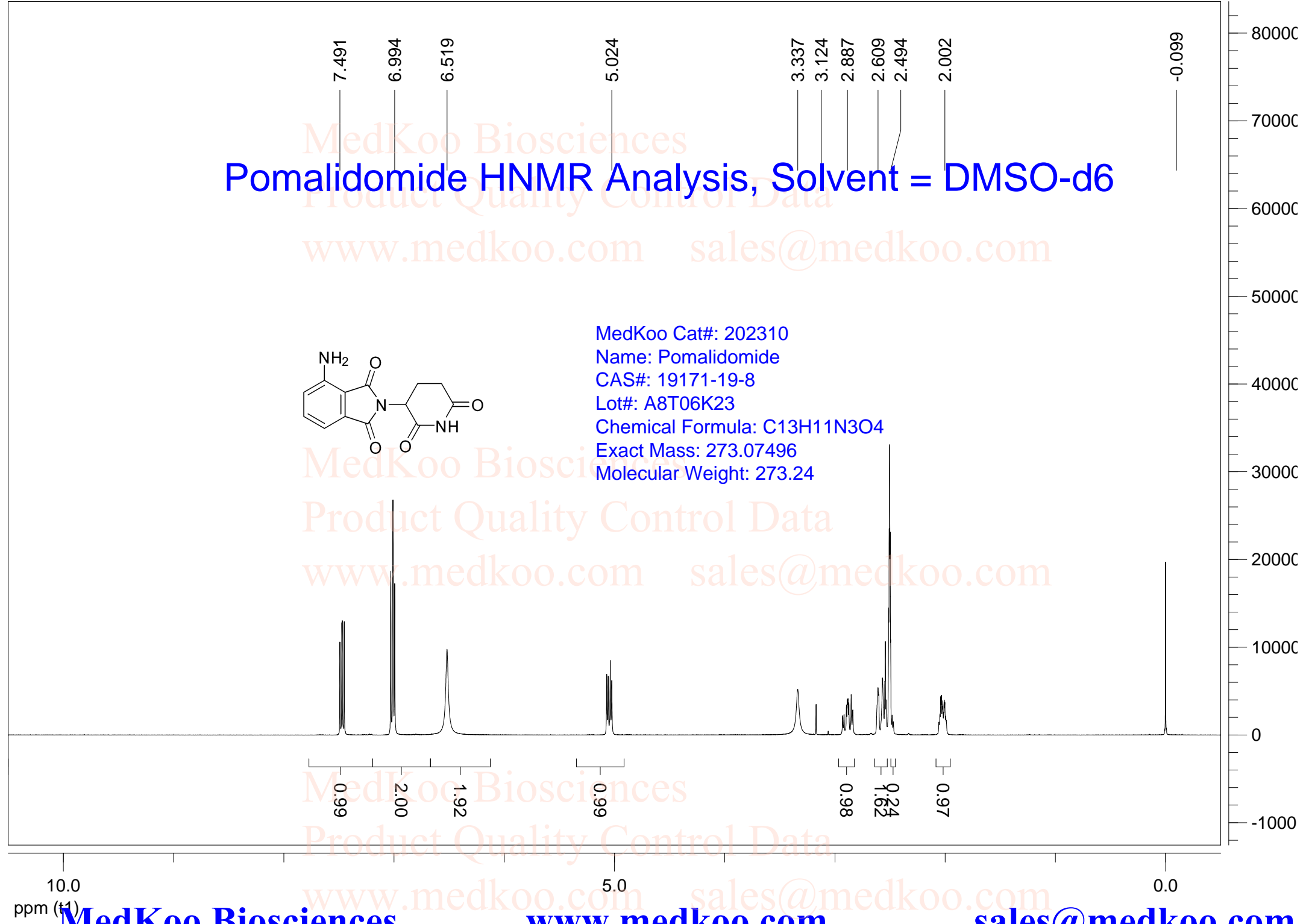


Pomalidomide HNMR Analysis, Solvent = DMSO-d6



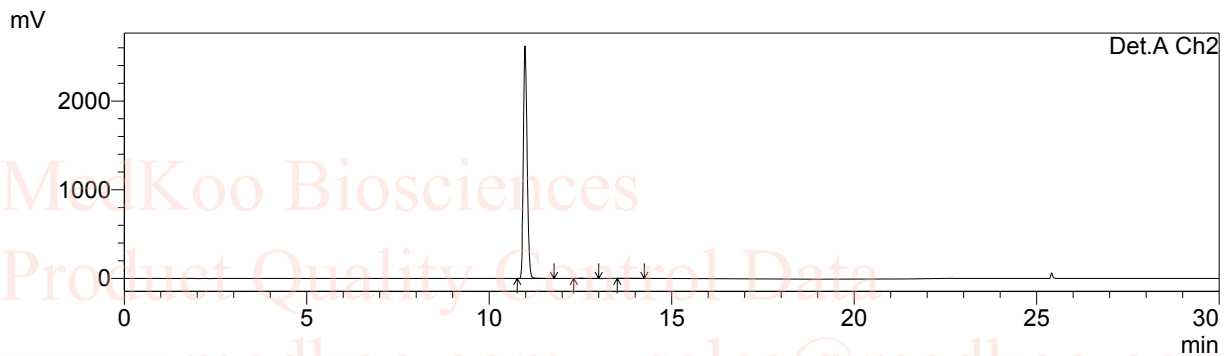
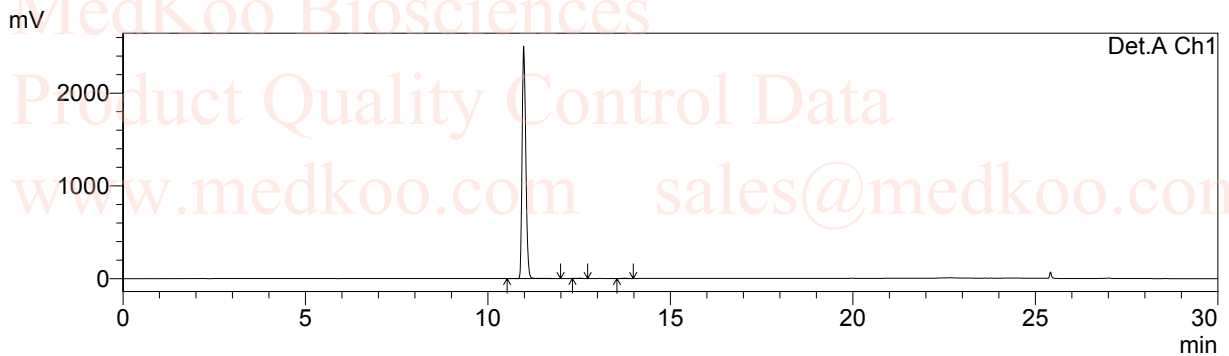
MedKoo Cat#: 202310
Name: Pomalidomide
CAS#: 19171-19-8
Lot#: A8T06K23
Chemical Formula: C₁₃H₁₁N₃O₄
Exact Mass: 273.07496
Molecular Weight: 273.24



Pomalidomide HPLC Analysis

Column : Inertil ODS-3, 5um 4.6*150mm
 Mobile phase : Solvent A: H2O(0.05%H3PO4) Solvent B:ACN(0.05%H3PO4)
 Temperature : 40 °C
 Flow rate : 1mL/min
 Run time : 3min gradient(20%B), 12min gradient (20%-50%B), 5min gradient (50%-95%B),3 min(95%B),th
 Detector : UV
 Wavelength : 220/254 nm
 User name : 19171-19-8
 Notebook page :
 Sample description :19171-19-8
 Injection Volume : 19171-19-8

Data File Name : 19171-19-8 .lcd
 Method File Name : 19171-19-8 .lcm

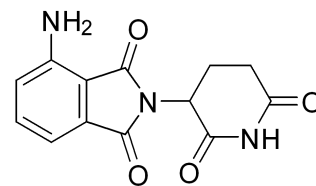


1Det.A Ch1/220nm
 2Det.A Ch2/254nm

PeakTable

Detector A Ch1 220nm

Peak#	Ret. Time	Area	Area %	Theoretical Plate#
1	10.975	17681957	99.850	49694.280
2	12.522	10176	0.057	95975.670
3	13.746	16449	0.093	84602.508
Total		17708582	100.000	



PeakTable

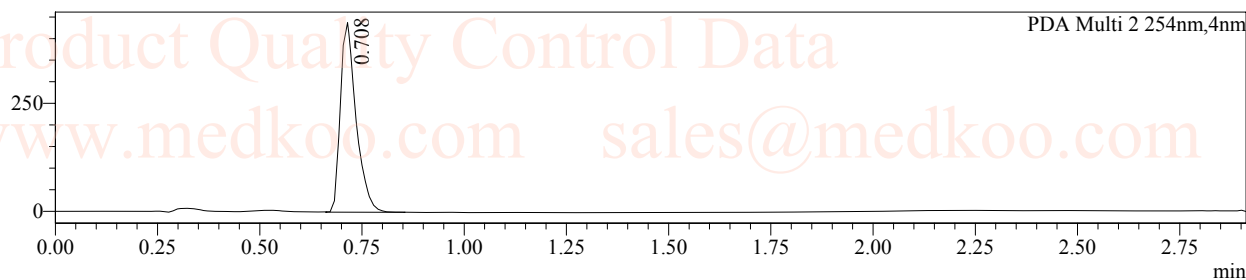
Detector A Ch2 254nm

Peak#	Ret. Time	Area	Area %	Theoretical Plate#
1	10.976	18737087	99.858	48639.156
2	12.522	12249	0.065	92341.752
3	13.746	14384	0.077	89976.870
Total		18763719	100.000	

MedKoo Cat#: 202310
 Name: Pomalidomide
 CAS#: 19171-19-8
 Lot#: A8T06K23
 Chemical Formula: C13H11N3O4
 Exact Mass: 273.07496
 Molecular Weight: 273.24

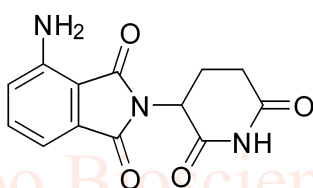
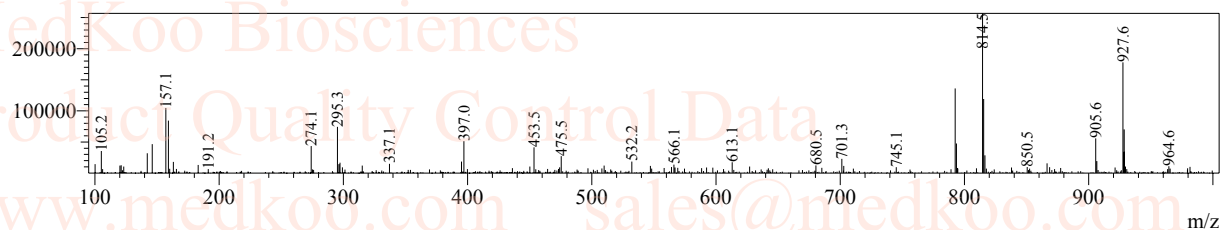
Pomalidomide MS Analysis

LC-MS condition
Column : Chromolith SpeedROD ,RP-18e,50*4.6mm LCMS-002
Mobile Phase : A: H2O(0.05%FA)
 B: CH3CN
Temperature : 35°C
Flow rate : 2.5mL/min
Run time : 0.1min@20%B,1.7min gradient(20-95% B), then0.7min@95% B,then0.4min@20% B
Injection volume : 5 uL
Detector : UV 220/254nm
Mass range : 100-1000
Scan : Postive/Negative
User Name : 19171-19-8
Data Filename : 19171-19-8 .lcd
mAU



MS Spectrum

Peak#:1 R.Time:0.680(Scan#:49)
MassPeaks:556
Spectrum Mode:Averaged 0.642-0.692(47-51)
BG Mode:Calc Segment 1 - Event 1



MedKoo Cat#: 202310
Name: Pomalidomide
CAS#: 19171-19-8
Lot#: A8T06K23
Chemical Formula: C13H11N3O4
Exact Mass: 273.07496
Molecular Weight: 273.24