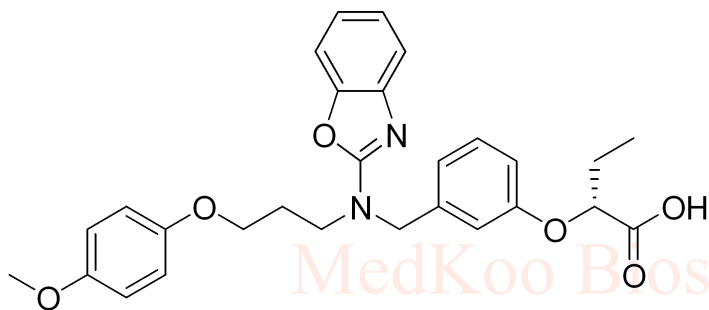


Pemafibrate HNMR Analysis, Solvent = MeOD

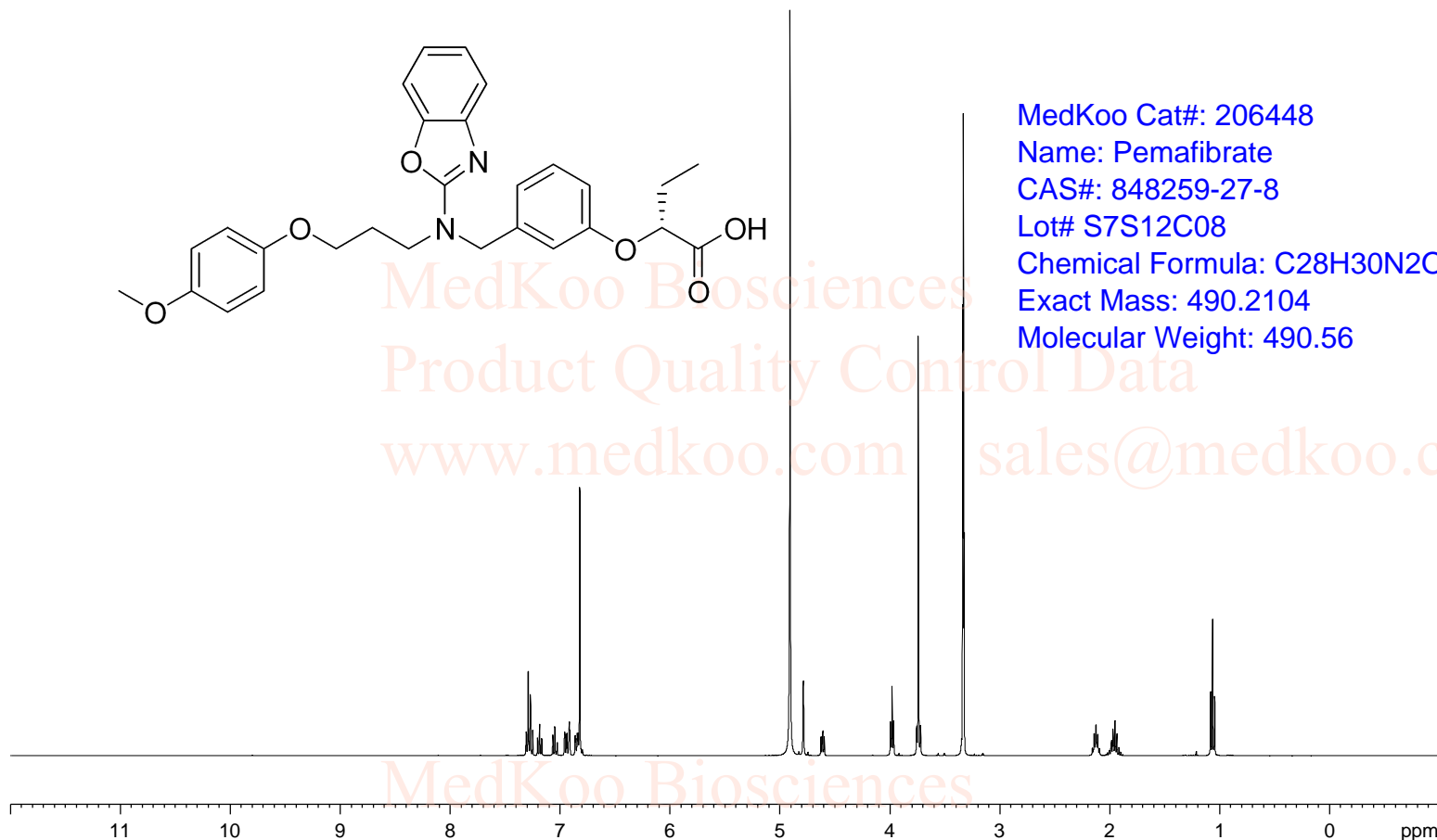
7.3074
7.3059
7.2884
7.2679
7.2475
7.2038
7.1849
7.1822
7.1655
7.1628
7.0655
7.0625
7.0458
7.0427
7.0269
7.0237
6.9555
6.9365
6.9183
6.9129
6.8605
6.8553
6.8416
6.8338
6.8185
4.9068
4.7847
4.6244
4.6115
4.6073
4.5943
3.9924
3.9778
3.9632
3.7538
3.7394
3.7188
3.3527
3.3486
3.3443
3.3374
3.3333
3.3292
3.3251
3.3210
2.1391
2.1224
2.1062
1.9850
1.9816
1.9680
1.9629
1.9497
1.9316
1.0799

NAME WX00028-SSC-Pre-TP
EXPNO 1
PROCNO 1
INSTRUM spect
PROBHD 5 mm PABBO BB/
PULPROG zg30
TD 49340
SOLVENT MeOD
NS 8
DS 0
SWH 8223.685 Hz
FIDRES 0.166674 Hz
AQ 2.9999220 sec
RG 190.49
DW 60.800 usec
DE 6.50 usec
TE 296.0 K
D1 1.0000000 sec
TD0 1



MedKoo Cat#: 206448
Name: Pemafibrate
CAS#: 848259-27-8
Lot# S7S12C08
Chemical Formula: C₂₈H₃₀N₂O₆
Exact Mass: 490.2104
Molecular Weight: 490.56

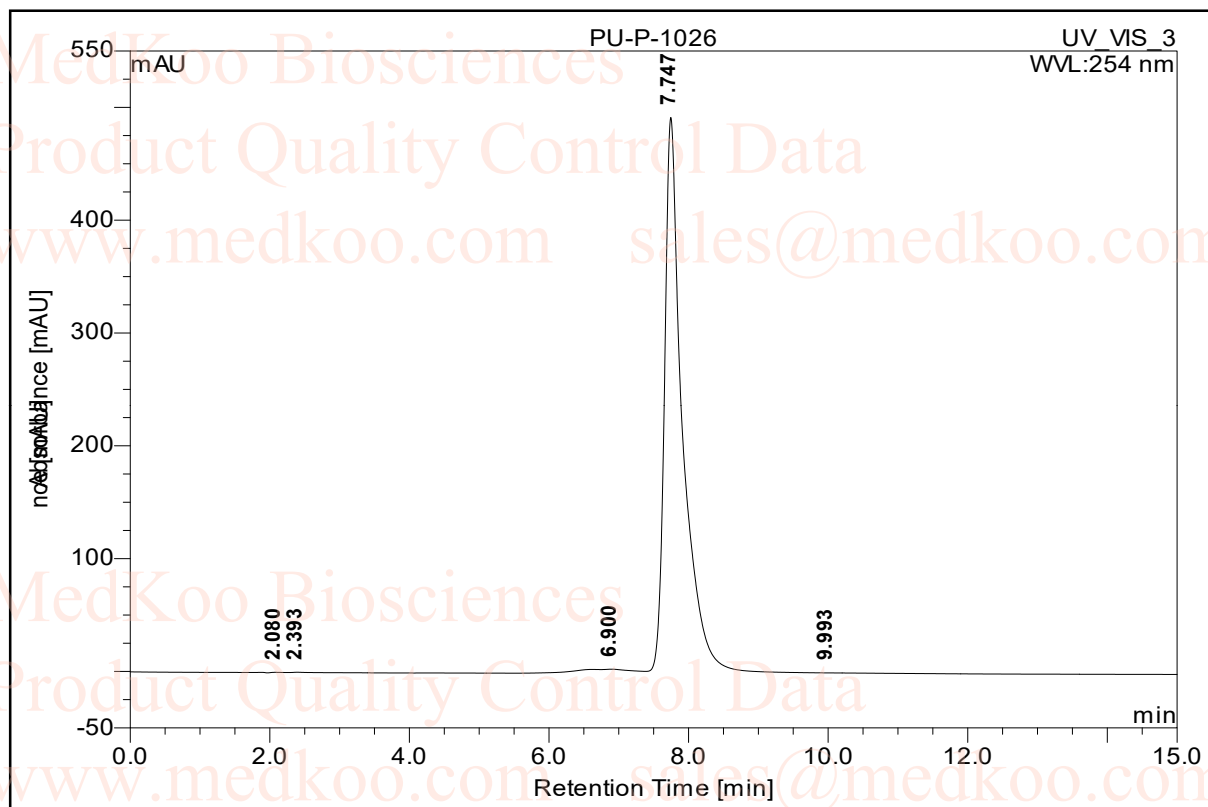
===== CHANNEL f1 =====
SFO1 400.1324710 MHz
NUC1 1H
P1 16.50 usec
SI 65536
SF 400.1300000 MHz
WDW EM
SSB 0
LB 0.30 Hz
GB 0
PC 1.00



2.947
0.989
1.017
1.016
0.971
4.977
2.146
1.022
2.000
4.957
2.021
2.069
3.041

Pemafibrate HPLC Analysis

Sample Name:	Pemafibrate	Injection Volume:	5.0
Vial Number:	RA2	Channel:	UV_VIS_3
Sample Type:	unknown	Wavelength:	254
Control Program:		Bandwidth:	4
Quantif. Method:	default	Dilution Factor:	1.0000
Recording Time:	2017/10/26 11:13	Sample Weight:	1.0000
Run Time (min):	15.04	Sample Amount:	1.0000



No.	Ret.Time min	Peak Name	Height mAU	Area mAU*min	Rel.Area %	Amount n.a.	Type
1	2.08	n.a.	0.293	0.040	0.03	n.a.	BMB*
2	2.39	n.a.	0.243	0.037	0.03	n.a.	BMB*
3	6.90	n.a.	2.304	1.762	1.26	n.a.	BMB*
4	7.75	n.a.	484.730	138.198	98.62	n.a.	BMB*
5	9.99	n.a.	0.086	0.097	0.07	n.a.	BMB*
Total:			487.656	140.134	100.00	0.000	

MedKoo Code#: 206448

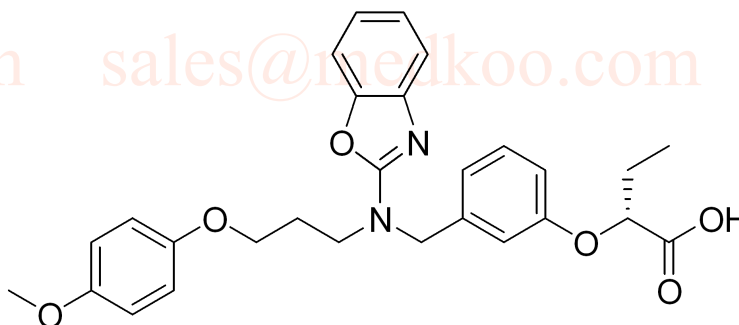
Name: Pemafibrate

CAS#: 848259-27-8

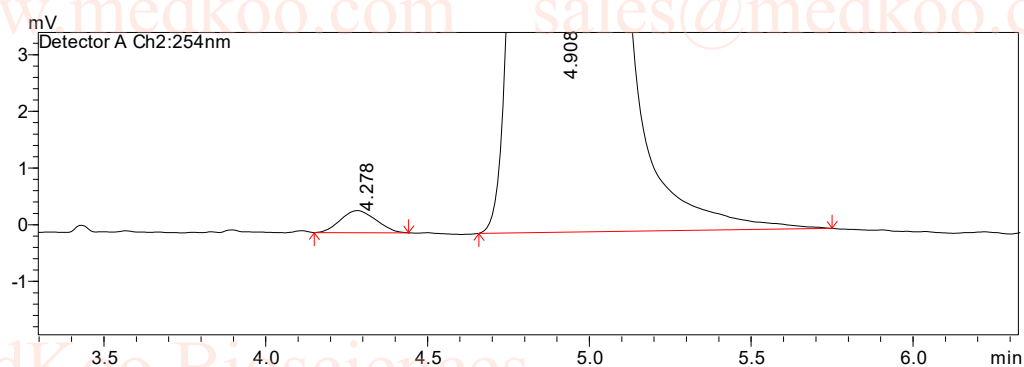
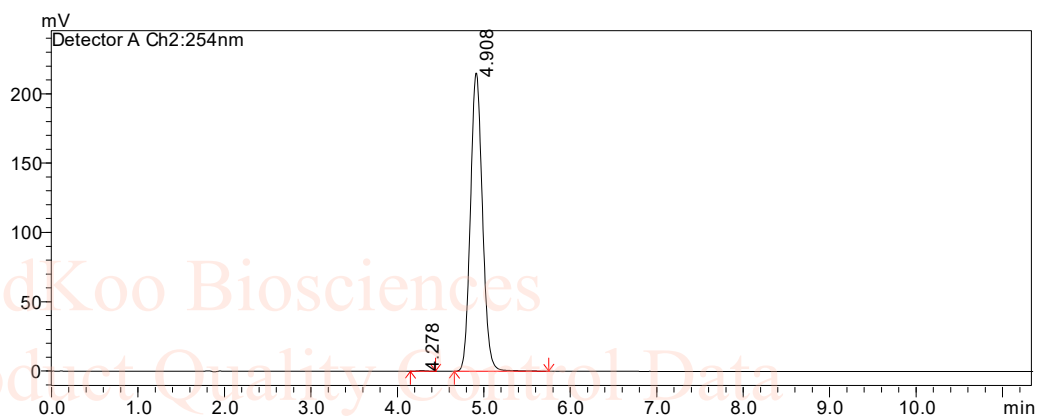
Lot# S7S12C08

Chemical Formula: C₂₈H₃₀N₂O₆

Molecular Weight: 490.56

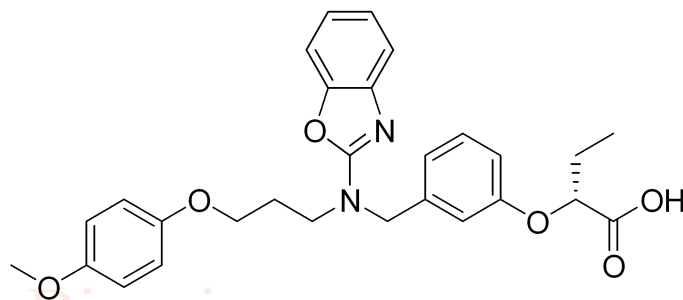


Pemafibrate Chiral HPLC Analysis



Peak table:254 nm

No.	t _R (min)	Area	Area%	T.Plates	Tailing	Resolution
1	4.278	2955	0.1417	6171.587	1.131	--
2	4.908	2081501	99.8583	5648.019	1.130	2.631



MedKoo Cat#: 206448

Name: Pemafibrate

CAS#: 848259-27-8

Lot# S7S12C08

Chemical Formula: C₂₈H₃₀N₂O₆

Exact Mass: 490.2104

Molecular Weight: 490.56

Pemafibrate Optical Rotation Analysis

Optical Rotation Determination Report

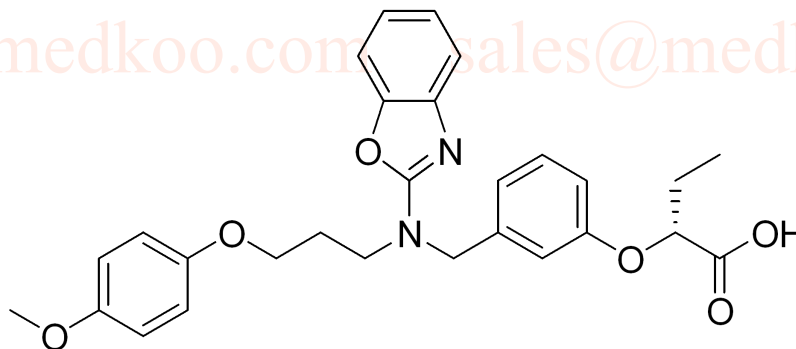
Compound ID SSC-Pre-TP
Sample ID WX00064-SSC-Pre-TP_01
Instrument Method Anton Paar MCP 500
C=1 IN CHCL3

Detected conditions:

NO.	Sample weight (mg)	volumetric flask (ml)	Length (dm)	Lamp	WL(nm)	Temperature(°C)
Batch 1	20.87	2	1	Na	589	25.00

Test Result:

NO.	C(g/100ml)	α	Specific Rotation
Batch 1	1.0435	+0.2006	+19.223



MedKoo Cat#: 206448

Name: Pemafibrate

CAS#: 848259-27-8

Lot# S7S12C08

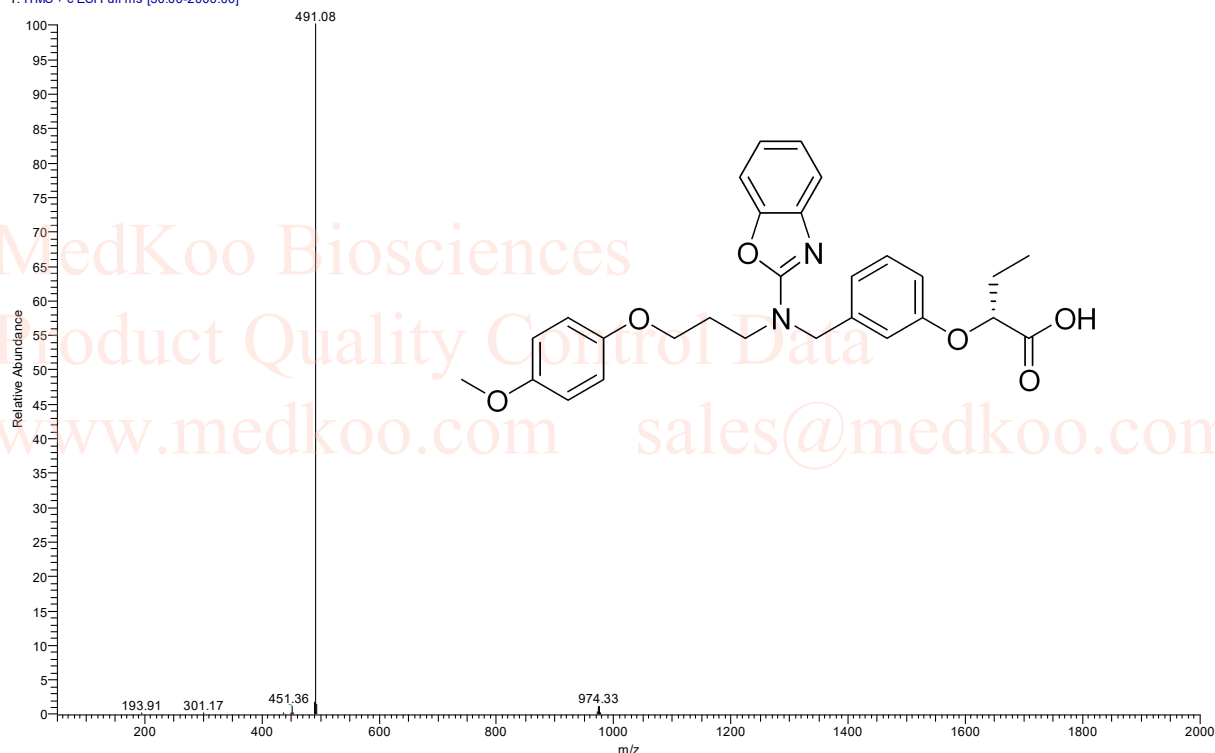
Chemical Formula: C₂₈H₃₀N₂O₆

Exact Mass: 490.2104

Molecular Weight: 490.56

Pemafibrate MS Analysis

1208-cx_171208114016 #184-228 RT: 1.81-2.24 AV: 45 NL: 2.40E4
T: ITMS + c ESI Full ms [50.00-2000.00]



1208-cx_171208114016 #184-228 RT: 1.81-2.24 AV: 45 NL: 2.40E4
T: ITMS + c ESI Full ms [50.00-2000.00]

