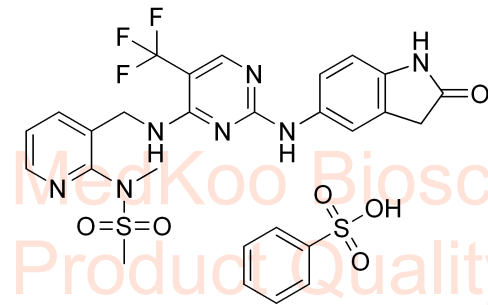
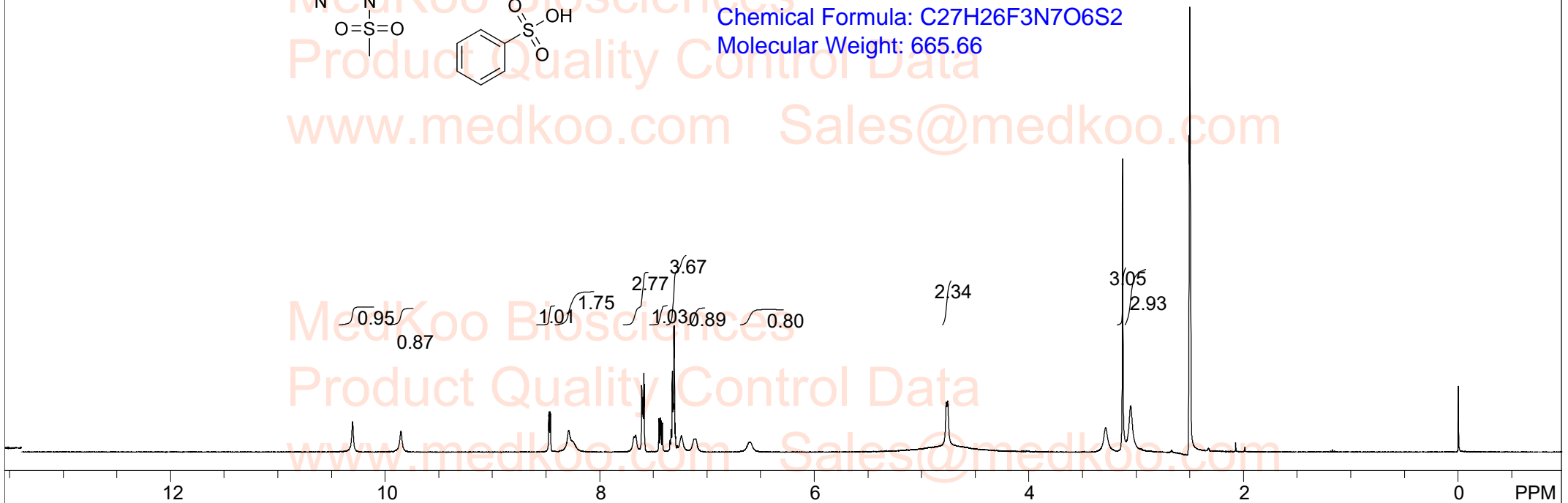


PF-562271 Besylate HNMR Analysis, Solvent: DMSO



MedKoo Cat#: 202228
 Name: PF-562271 Besylate
 CAS#: 939791-38-5
 Lot#: A21T07K23
 Chemical Formula: C₂₇H₂₆F₃N₇O₆S₂
 Molecular Weight: 665.66



nmr DMSO..							
F1: 400.132	F2: 1.000	SW1: 8224		OF1: 2468.7		PTS1d: 32768	
EX: zg30		PW: 13.0 usec	PD: 1.0 sec	NA: 8	LB: 0.0		Nuts - \$pdata

PF-562271 Besylate HPLC Analysis

Sample Name : PF-562271

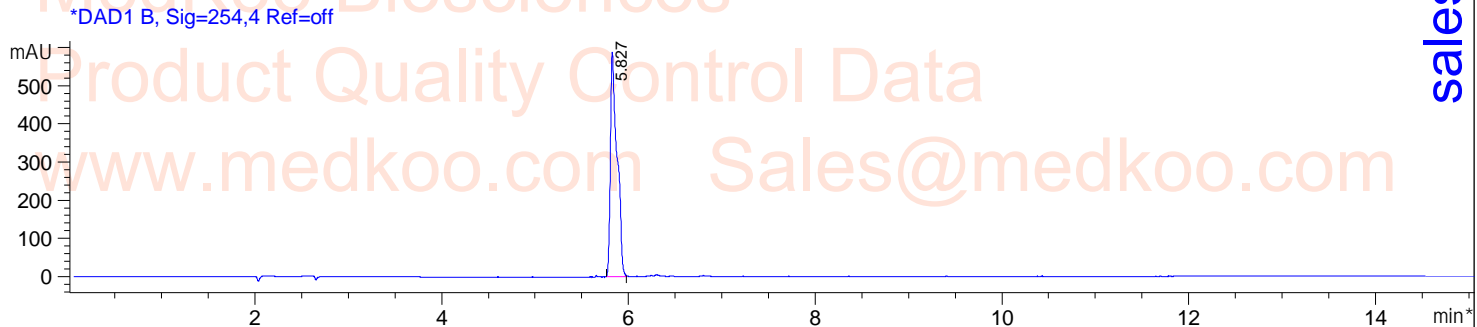
Method Info : Column:SUNFire C18 (4.6x 150 mm, 3.5um)

Mobile phase: H2O(0.01%TFA) (A) / ACN(0.01%TFA)(B)

Elution program: Gradient from 5 to 95% of B in 8min at 1ml/min

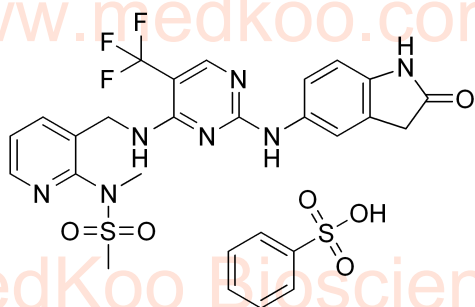
Temperature: 40 °C

Detection: UV (214 , 4 nm) and MS (ESI, Pos mode ,100 to 1500 amu)



Integration Results for DAD1 B, Sig=254,4 Ref=off

RetTim	Width	Area	Height	Area%
5.83	0.07	2903.09	588.30	100.00



MedKoo Cat#: 202228

Name: PF-562271 Besylate

CAS#: 939791-38-5

Lot#: A21T07K23

Chemical Formula: C₂₇H₂₆F₃N₇O₆S₂

Molecular Weight: 665.66

MedKoo Biosciences

Product Quality Control Data

www.medkoo.com Sales@medkoo.com

sales@medkoo.com

www.medkoo.com

MedKoo Biosciences

PF-562271 Besylate LC/MS Analysis

Sample Name : PF-562271

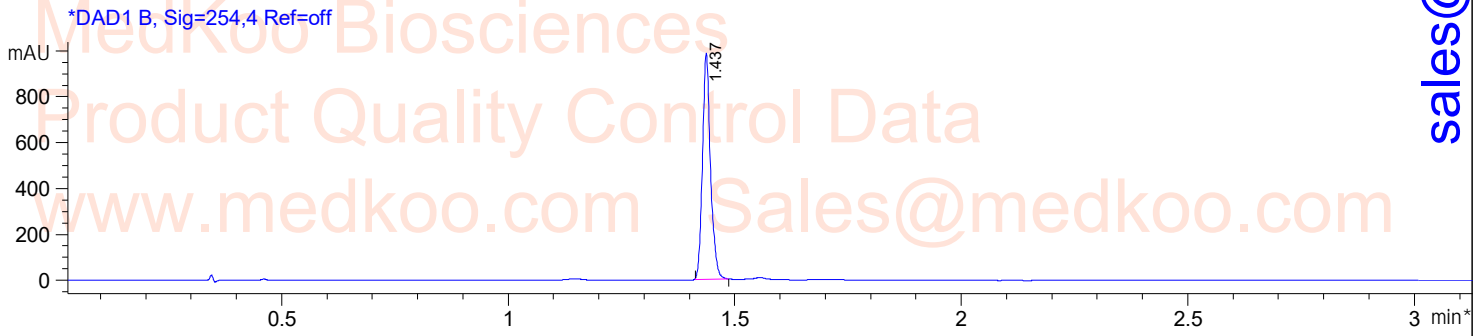
Method Info : Column:SunFire C18 (4.6x 50 mm,3.5 um)

Mobile phase: H2O(0.01%TFA) (A) / ACN(0.01%TFA)(B)

Elution program: Gradient from 10 to95% of B in 1.4 min at 2ml/min

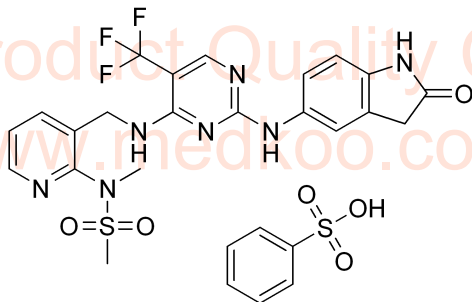
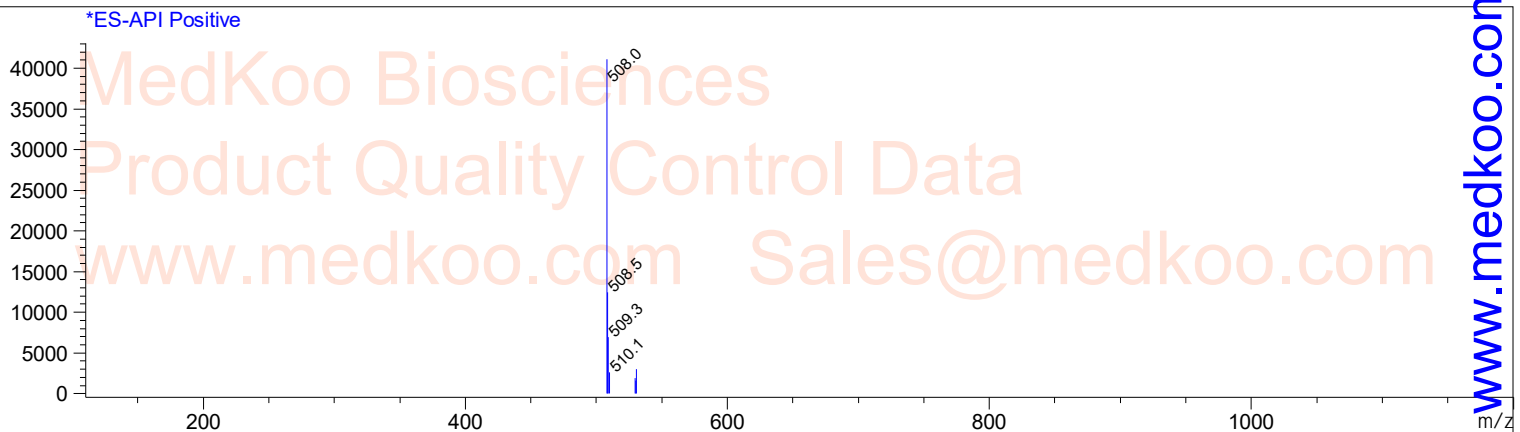
Temperature: 50 °C

Detection: UV (214 , 4 nm) and MS (ESI, Pos mode ,110 to 1000 amu)



Ret. Time: 1.43

<<<< POSITIVE SPECTRA >>>>



MedKoo Cat#: 202228

Name: PF-562271 Besylate

CAS#: 939791-38-5

Lot#: A21T07K23

Chemical Formula: C₂₇H₂₆F₃N₇O₆S₂

Molecular Weight: 665.66

PF-562271 (free base)

Chemical Formula: C₂₁H₂₀F₃N₇O₃S

Exact Mass: 507.13004,

Molecular Weight: 507.49

sales@medkoo.com

www.medkoo.com

MedKoo Biosciences