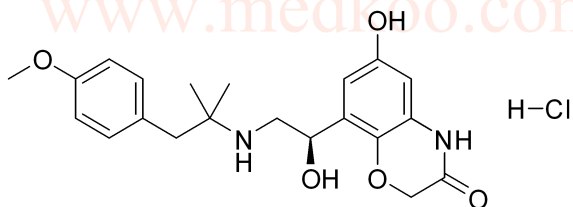


# Olodaterol HCl HNMR Analysis, solvent: DMSO-d6

— 10.665

— 9.346  
 — 9.017  
 — 8.675  
 7.146  
 7.124  
 6.906  
 6.884  
 6.590  
 6.583  
 6.384  
 6.378  
 6.102  
 5.154  
 5.130  
 4.595  
 4.558  
 4.511  
 4.473  
 3.740  
 3.361  
 3.175  
 3.163  
 3.132  
 2.914  
 2.904  
 2.870  
 2.512  
 2.508  
 2.503  
 1.187



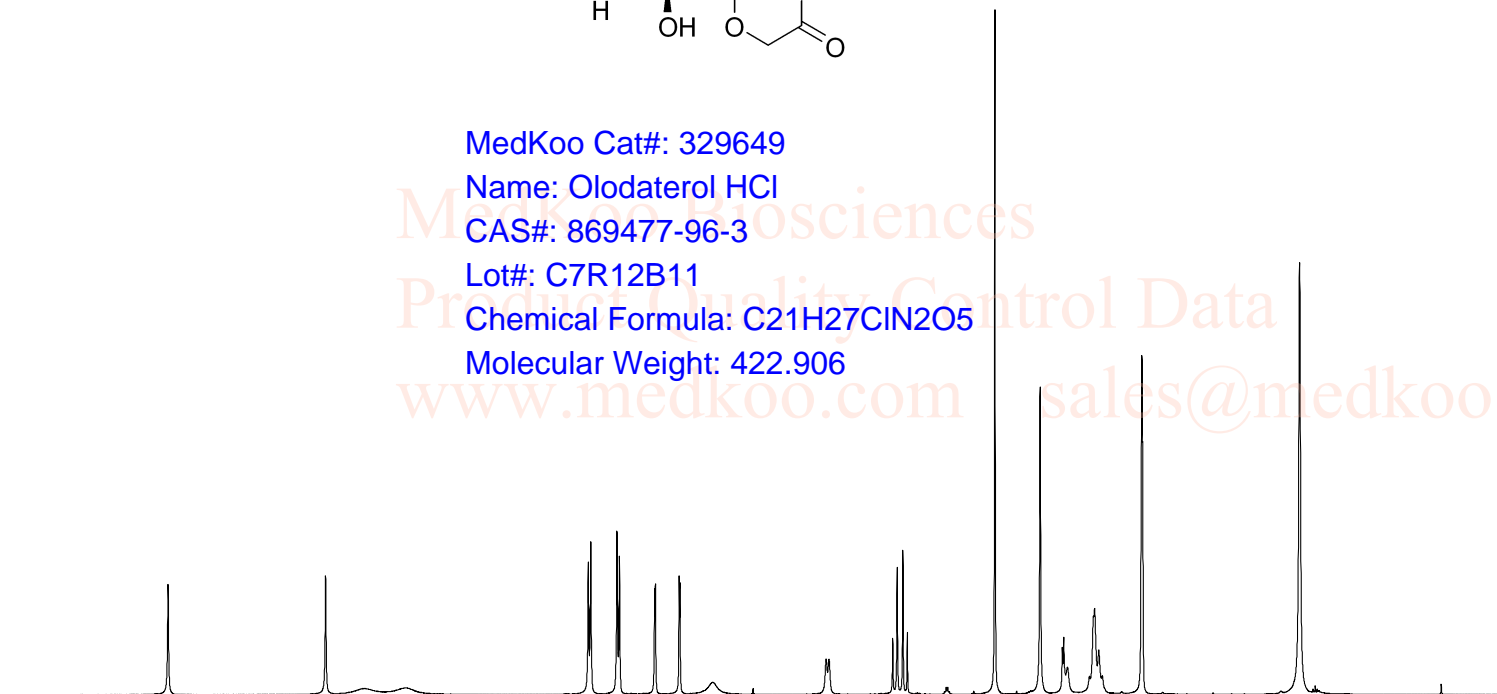
MedKoo Cat#: 329649  
 Name: Olodaterol HCl  
 CAS#: 869477-96-3  
 Lot#: C7R12B11  
 Chemical Formula: C<sub>21</sub>H<sub>27</sub>CIN<sub>2</sub>O<sub>5</sub>  
 Molecular Weight: 422.906

```

NAME      Olodaterol HCl
EXPNO     1
PROCNO    1
Time      11.38
INSTRUM   spect
PROBHD    5 mm PABBO
PULPROG   BB-zg30
TD         65536
SOLVENT   DMSO
NS         12
DS         0
SWH        8223.685 Hz
FIDRES     0.125483 Hz
AQ         3.9846387 sec
RG         128
DW         60.800 usec
DE         6.50 usec
TE         300.0 K
D1         1.00000000 sec
TD0        1
    
```

```

===== CHANNEL f1 =====
NUC1       1H
P1         10.85 usec
PL1        -4.00 dB
PL1W       20.19063568 W
SFO1       400.1324710 MHz
SI         32768
SF         400.1300000 MHz
WDW        EM
SSB        0
LB         0.30 Hz
GB         0
PC         1.00
    
```



11 10 9 8 7 6 5 4 3 2 1 ppm

0.98 1.02 1.71 2.06 2.01 1.04 1.06 0.95 1.00 2.02 3.07 1.35 3.03 6.02

# Olodaterol HCl HPLC Analysis

Acq. Instrument : LC1260

Seq. Line : 2

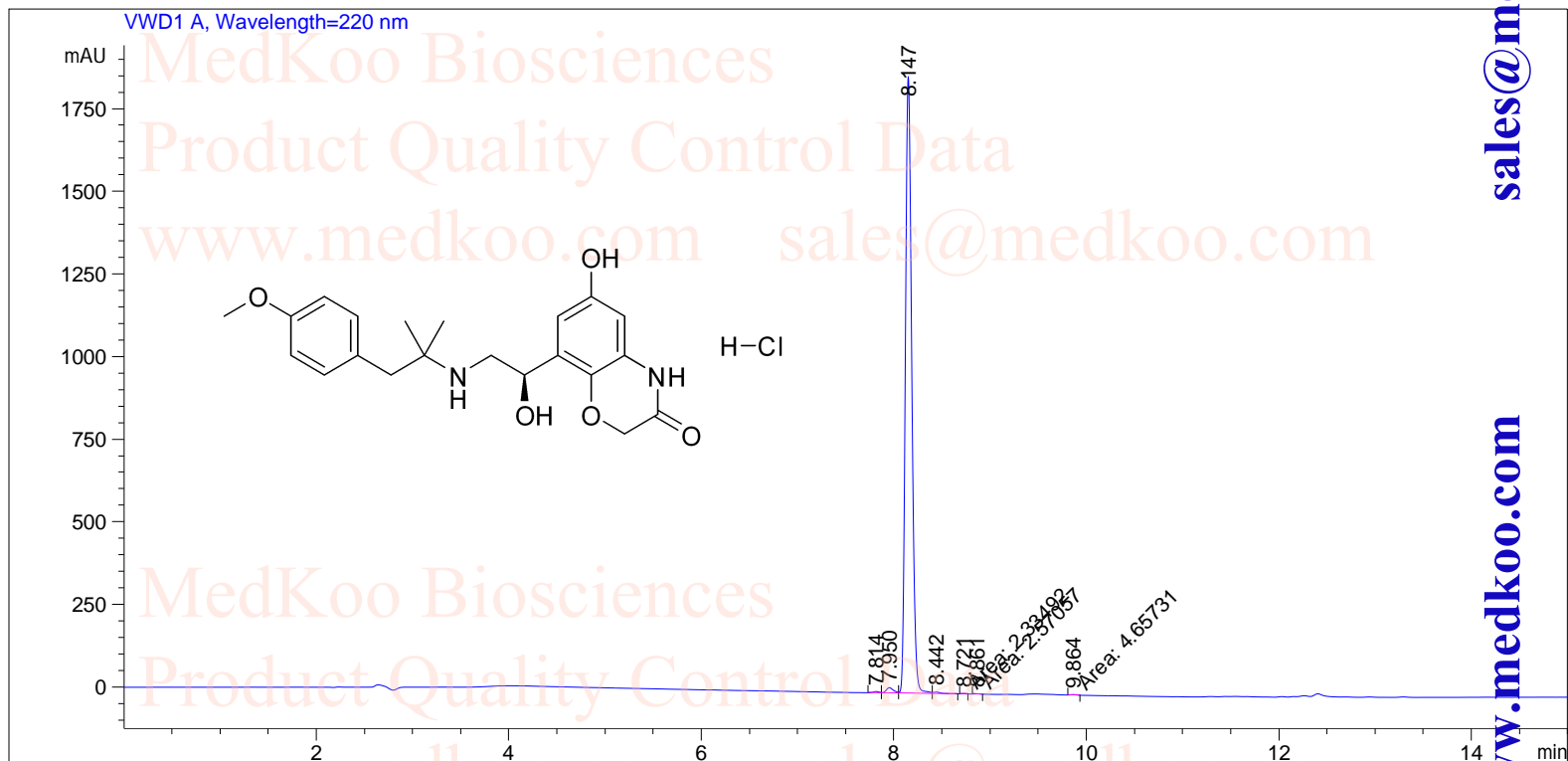
Location : Vial 65

Inj : 1

Inj Volume : 0 µl

Different Inj Volume from Sequence !

Actual Inj Volume : 3 µl



## Area Percent Report

Sorted By : Signal  
 Multiplier : 1.0000  
 Dilution : 1.0000  
 Use Multiplier & Dilution Factor with ISTDs

Signal 1: VWD1 A, Wavelength=220 nm

Peak #	RetTime [min]	Type	Width [min]	Area [mAU*s]	Height [mAU]	Area %
1	7.814	VV	0.0623	15.31696	3.78175	0.1772
2	7.950	VV	0.0761	82.88535	16.08392	0.9590
3	8.147	VV	0.0702	8511.05469	1866.77783	98.4748
4	8.442	VV	0.0748	24.05445	4.61772	0.2783

MedKoo Cat#: 329649

Name: Olodaterol HCl

CAS#: 869477-96-3

Lot#: C7R12B11

Chemical Formula: C<sub>21</sub>H<sub>27</sub>CIN<sub>2</sub>O<sub>5</sub>

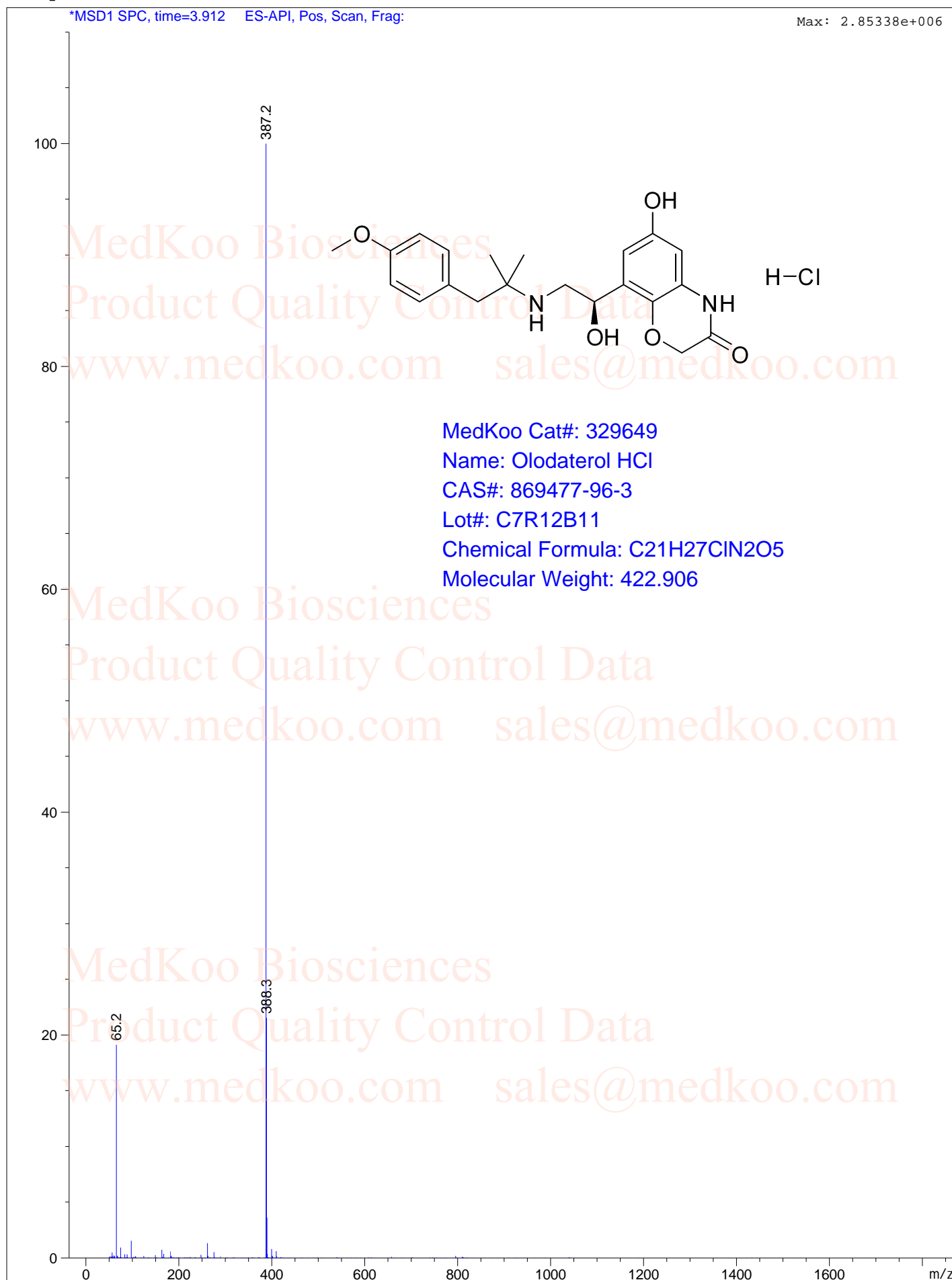
Molecular Weight: 422.906

# Olodaterol HCl MS Analysis

MS Spectrum

\*MSD1 SPC, time=3.912 ES-API, Pos, Scan, Frag:

Max: 2.85338e+006



MedKoo Cat#: 329649

Name: Olodaterol HCl

CAS#: 869477-96-3

Lot#: C7R12B11

Chemical Formula: C<sub>21</sub>H<sub>27</sub>ClN<sub>2</sub>O<sub>5</sub>

Molecular Weight: 422.906

sales@medkoo.com

www.medkoo.com

MedKoo Biosciences